

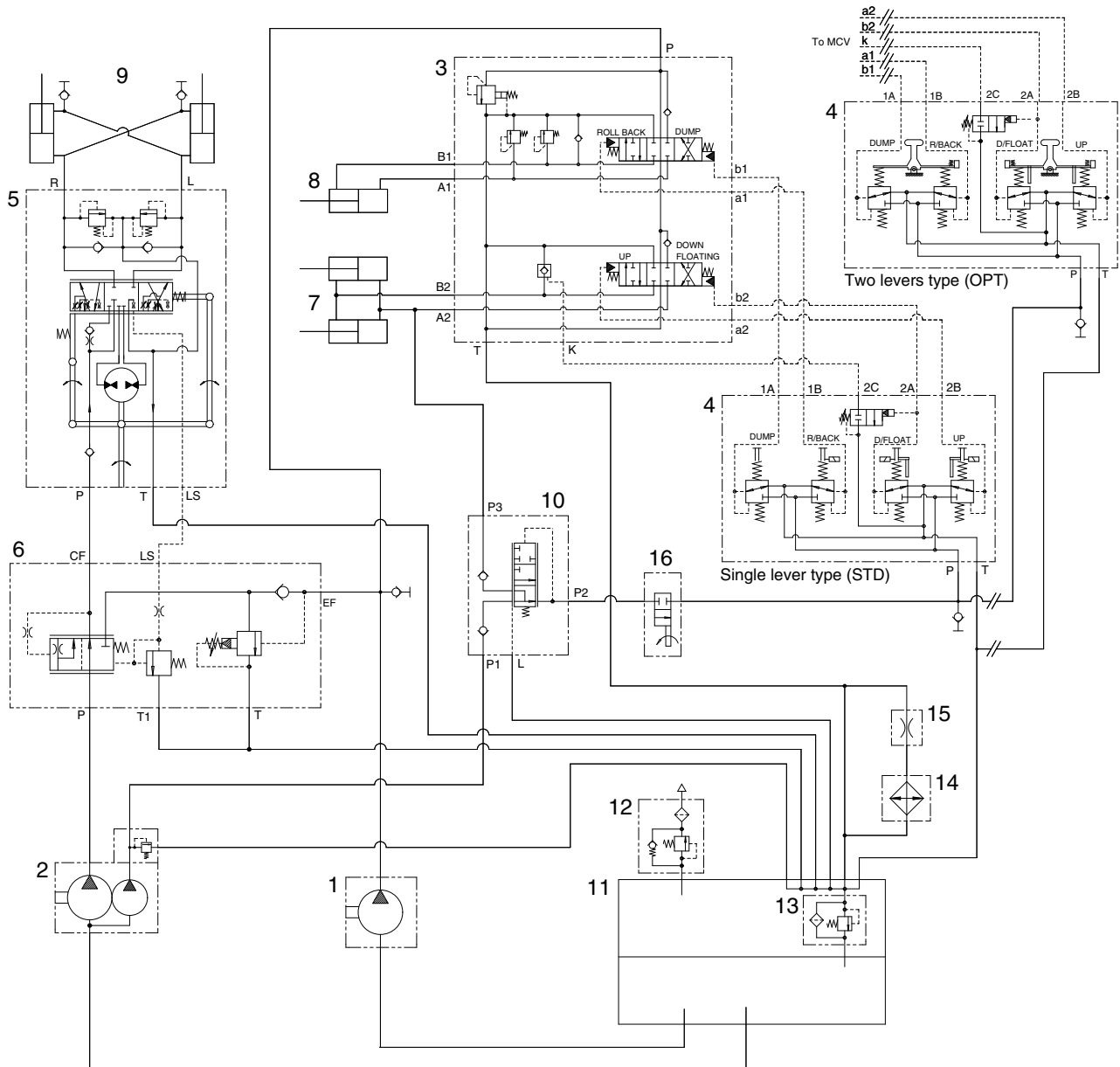
SECTION 5 WORK EQUIPMENT

Group 1 Hydraulic circuit	5-1
Group 2 Structure and function	5-8
Group 3 Operational Checks and Troubleshooting	5-35
Group 4 Test and Adjustments	5-45

SECTION 5 WORK EQUIPMENT

GROUP 1 HYDRAULIC CIRCUIT

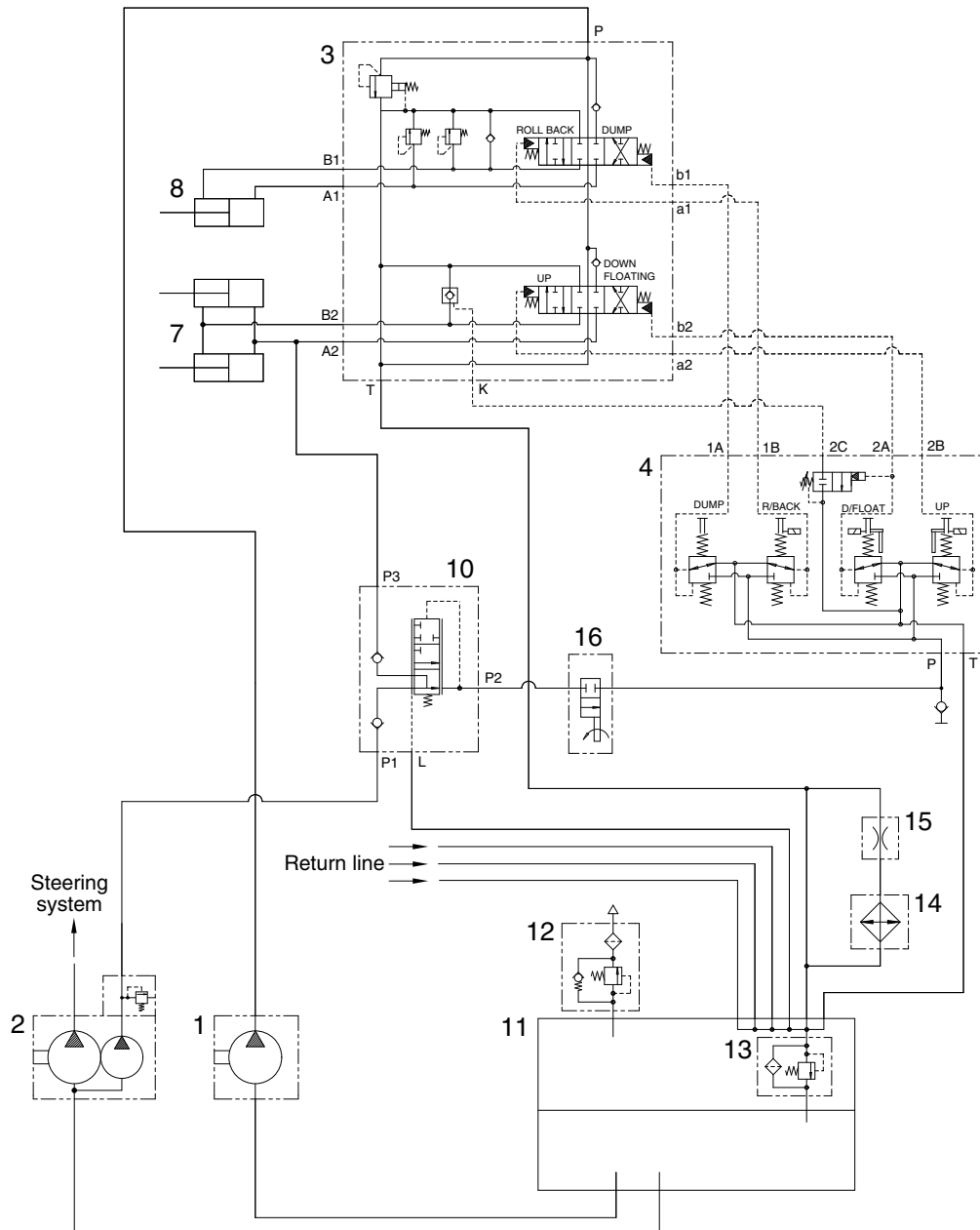
1. HYDRAULIC CIRCUIT



- | | | | | | |
|---|-------------------------|----|-----------------------|----|-----------------|
| 1 | Main pump | 7 | Boom cylinder | 13 | Return filter |
| 2 | Steering and pilot pump | 8 | Bucket cylinder | 14 | Oil cooler |
| 3 | Main control valve | 9 | Steering cylinder | 15 | Orifice fitting |
| 4 | Remote control valve | 10 | Pressure select valve | 16 | Safety valve |
| 5 | Steering unit | 11 | Hydraulic tank | | |
| 6 | Steering valve | 12 | Air breather | | |

7615HC01

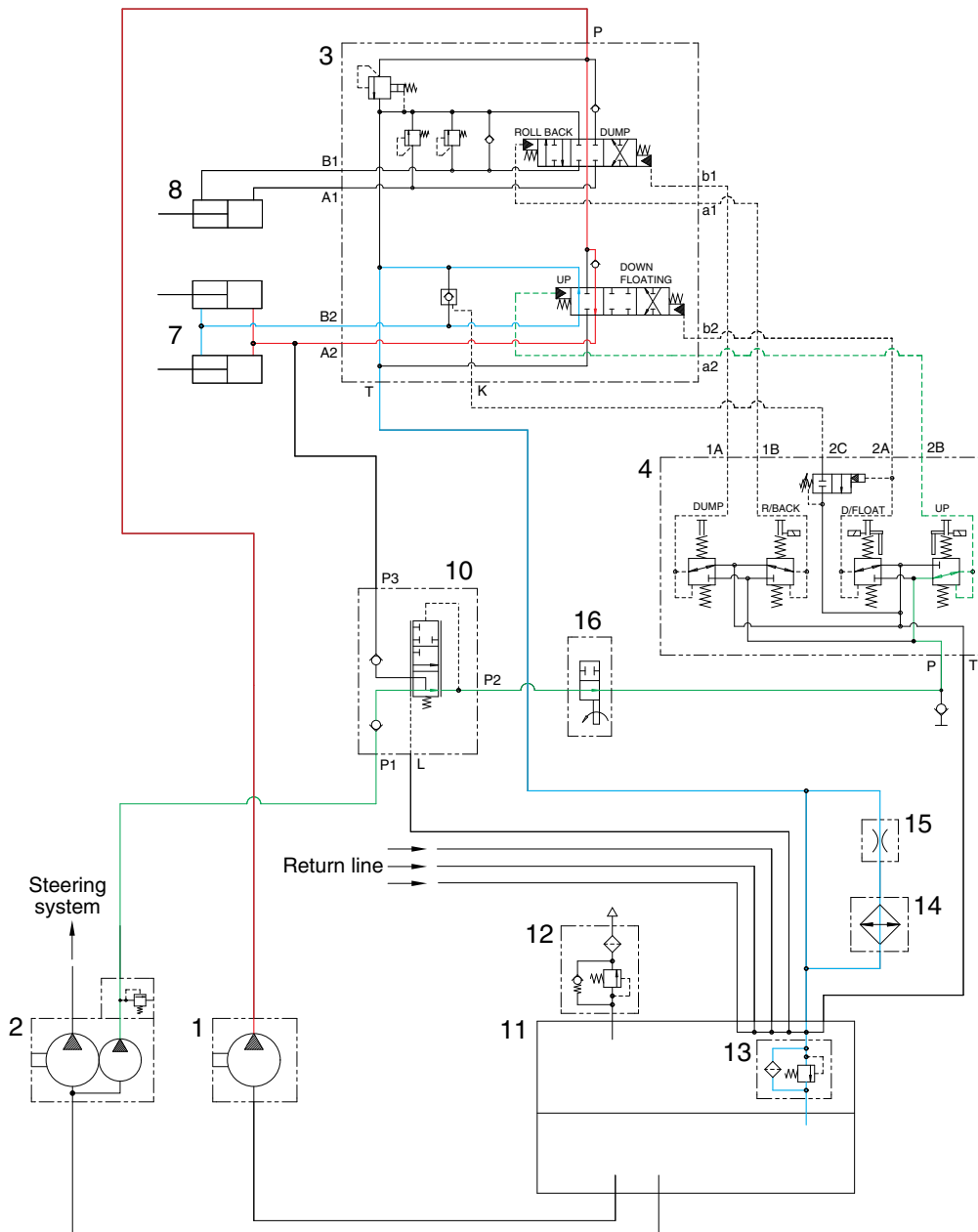
2. WORK EQUIPMENT HYDRAULIC CIRCUIT



7615HC02

- | | | | | | |
|---|-------------------------|----|-----------------------|----|-----------------|
| 1 | Main pump | 8 | Bucket cylinder | 14 | Oil cooler |
| 2 | Steering and pilot pump | 10 | Pressure select valve | 15 | Orifice fitting |
| 3 | Main control valve | 11 | Hydraulic tank | 16 | Safety valve |
| 4 | Remote control valve | 12 | Air breather | | |
| 7 | Boom cylinder | 13 | Return filter | | |

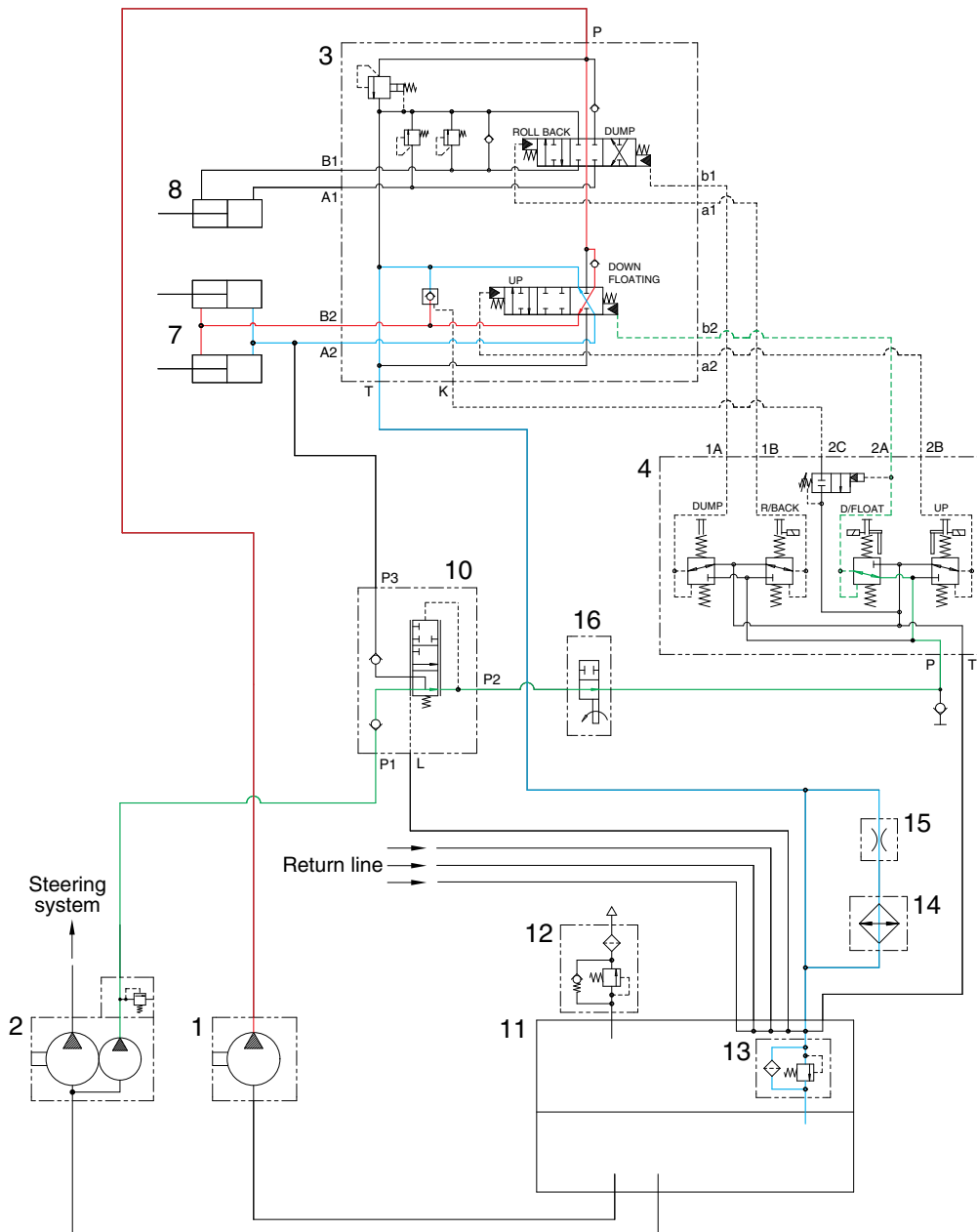
1) WHEN THE CONTROL LEVER IS IN THE BOOM RAISE POSITION



7615HC03

- When the RCV lever is pulled back, the boom spool is moved to raise position by pilot oil pressure from port 2B of RCV.
- The oil from main pump (1) flows into main control valve (3) and then goes to the large chamber of boom cylinder (7).
- The oil from the small chamber of boom cylinder (7) returns to hydraulic oil tank (11) through the boom spool at the same time.
- When this happens, the boom goes up.

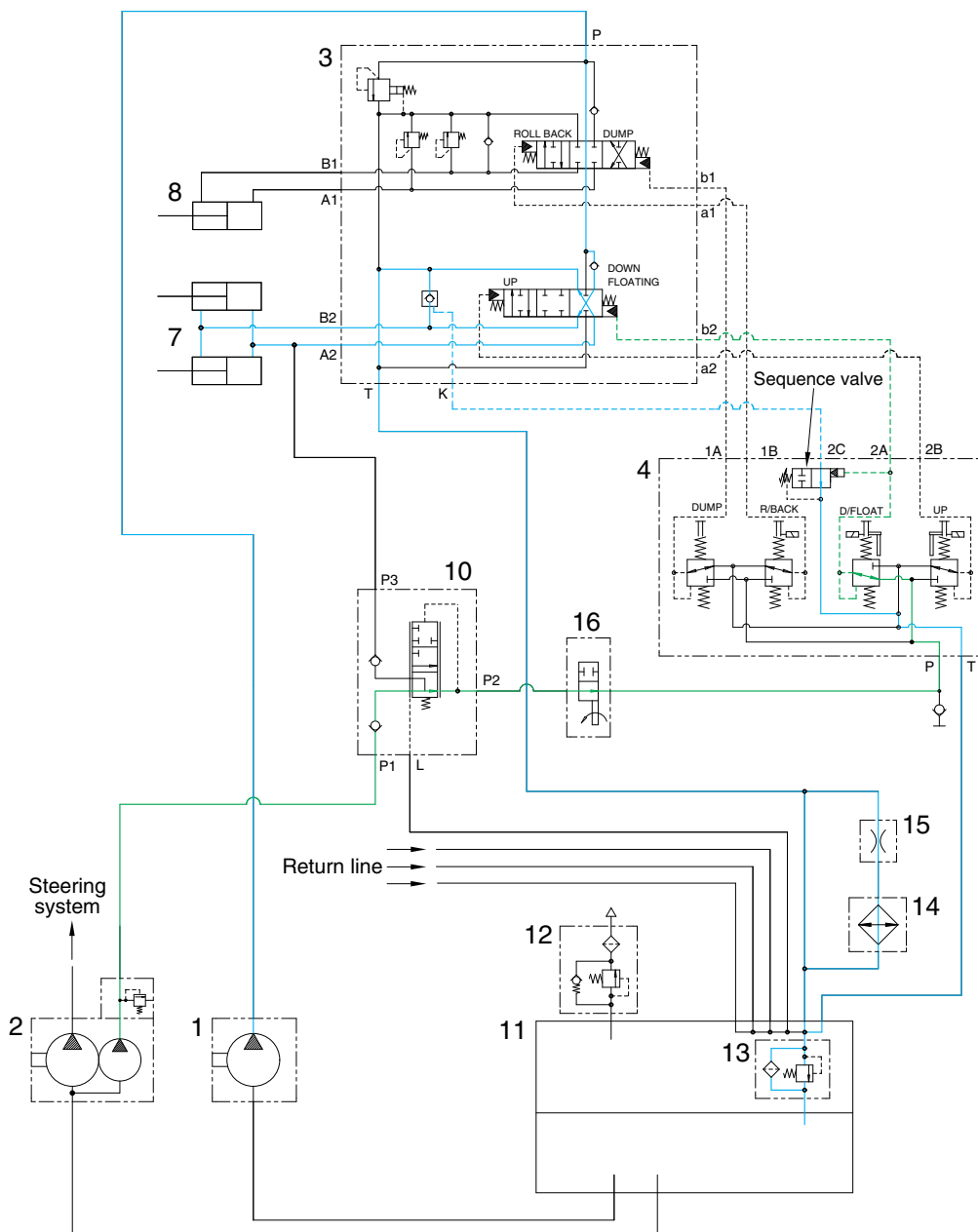
2) WHEN THE CONTROL LEVER IS IN THE BOOM LOWER POSITION



7615HC04

- When the RCV lever is pushed forward, the boom spool is moved to lower position by pilot oil pressure from port 2A of RCV.
- The oil from main pump (1) flows into main control valve (3) and then goes to small chamber of boom cylinder (7).
- The oil returned from large chamber of boom cylinder (7) returns to hydraulic tank (11) through the boom spool at the same time.

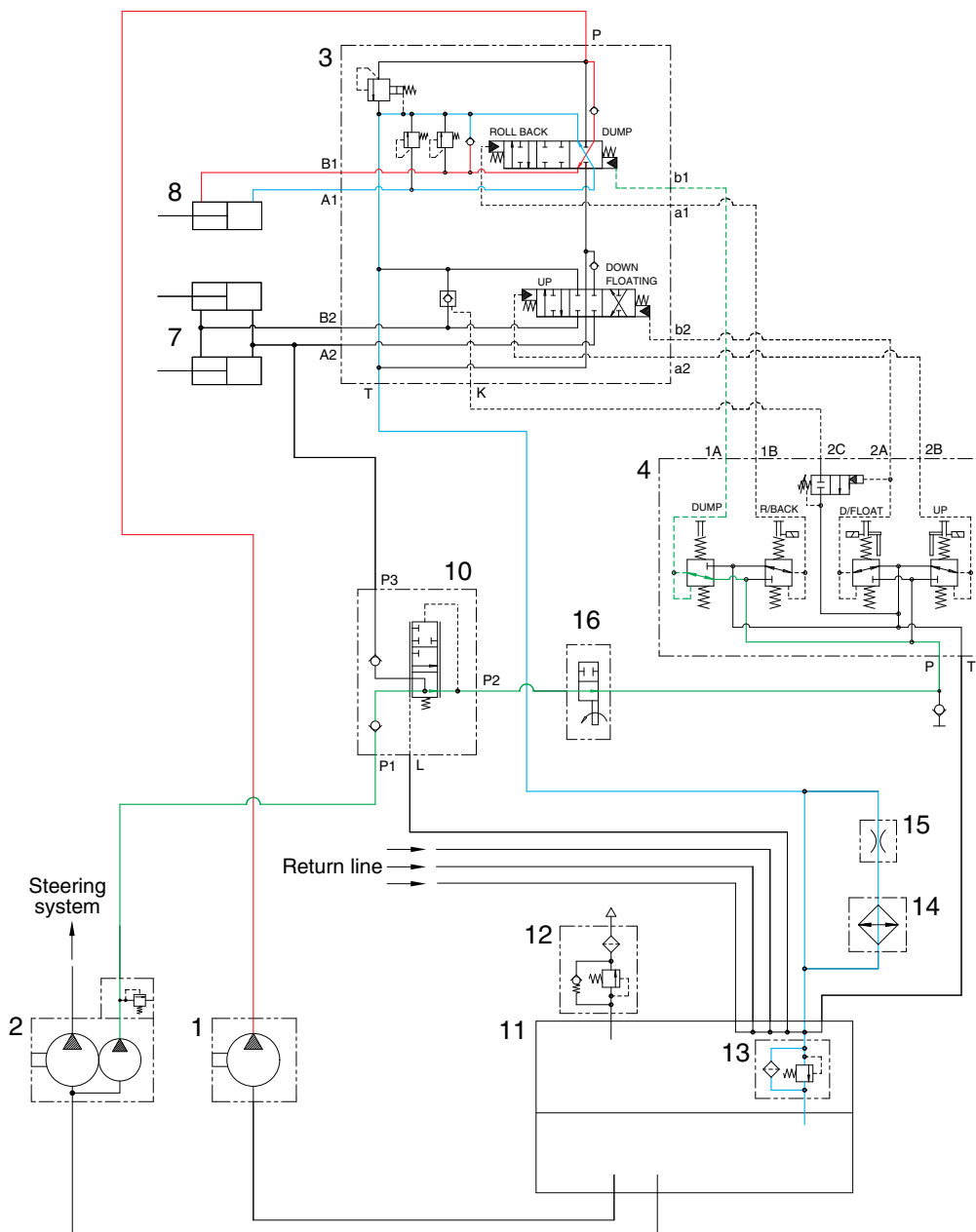
3) WHEN THE CONTROL LEVER IS IN THE BOOM FLOAT POSITION



7615HC05

- When the RCV lever of boom is in lower, move it further to forward to get in floating position.
- When the float detent is activated, the sequence valve opens and the flow in discharging way, K port, inside MCV is directed to tank through 2C port inside RCV.
- The port P, A2, B2 and T become connected to keep the cylinder in floating position. In this condition, when the bucket is in contact with the ground, it can be move up and down in accordance with the shape of the ground.

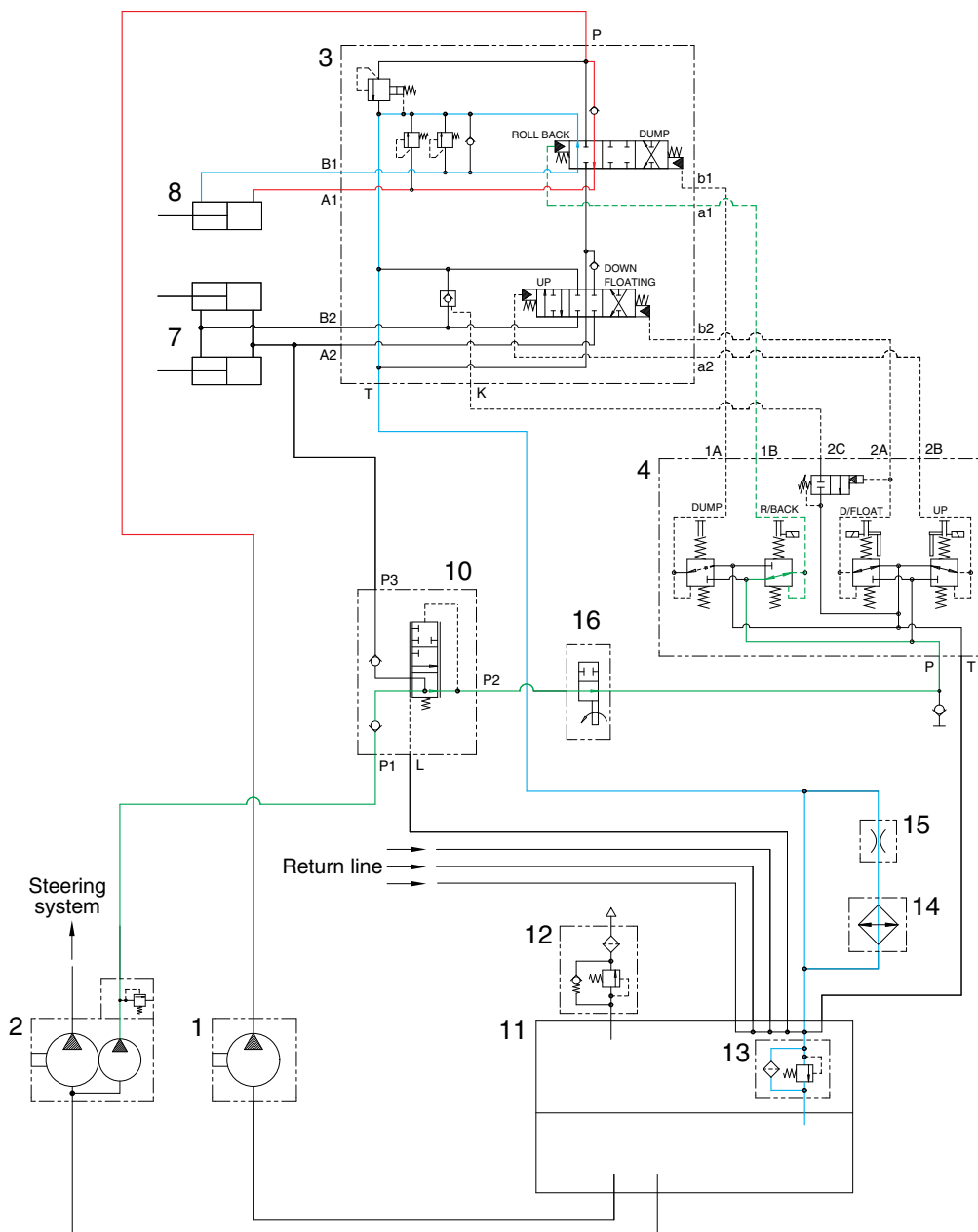
4) WHEN THE CONTROL LEVER IS IN THE BUCKET DUMP POSITION



7615HC06

- If the RCV lever (4) is pushed right, the bucket spool is moved to dump position by pilot oil pressure from port 1A of RCV.
- The oil from main pump (1) flows into main control valve (3) and then goes to the small chamber of bucket cylinder (8).
- The oil at the large chamber of bucket cylinder (8) returns to hydraulic tank (11).
- When this happens, the bucket is dumped.

5) WHEN THE CONTROL LEVER IS IN THE BUCKET ROLL BACK (retract) POSITION



7615HC07

- If the RCV lever is pulled left, the bucket spool is moved to roll back position by pilot oil pressure from port 1B of RCV.
- The oil from main pump (1) flows into main control valve (3) and then goes to the large chamber of bucket cylinder (8).
- The oil at the chamber of bucket cylinder (8) returns to hydraulic tank (11).
- When this happens, the bucket roll back.