

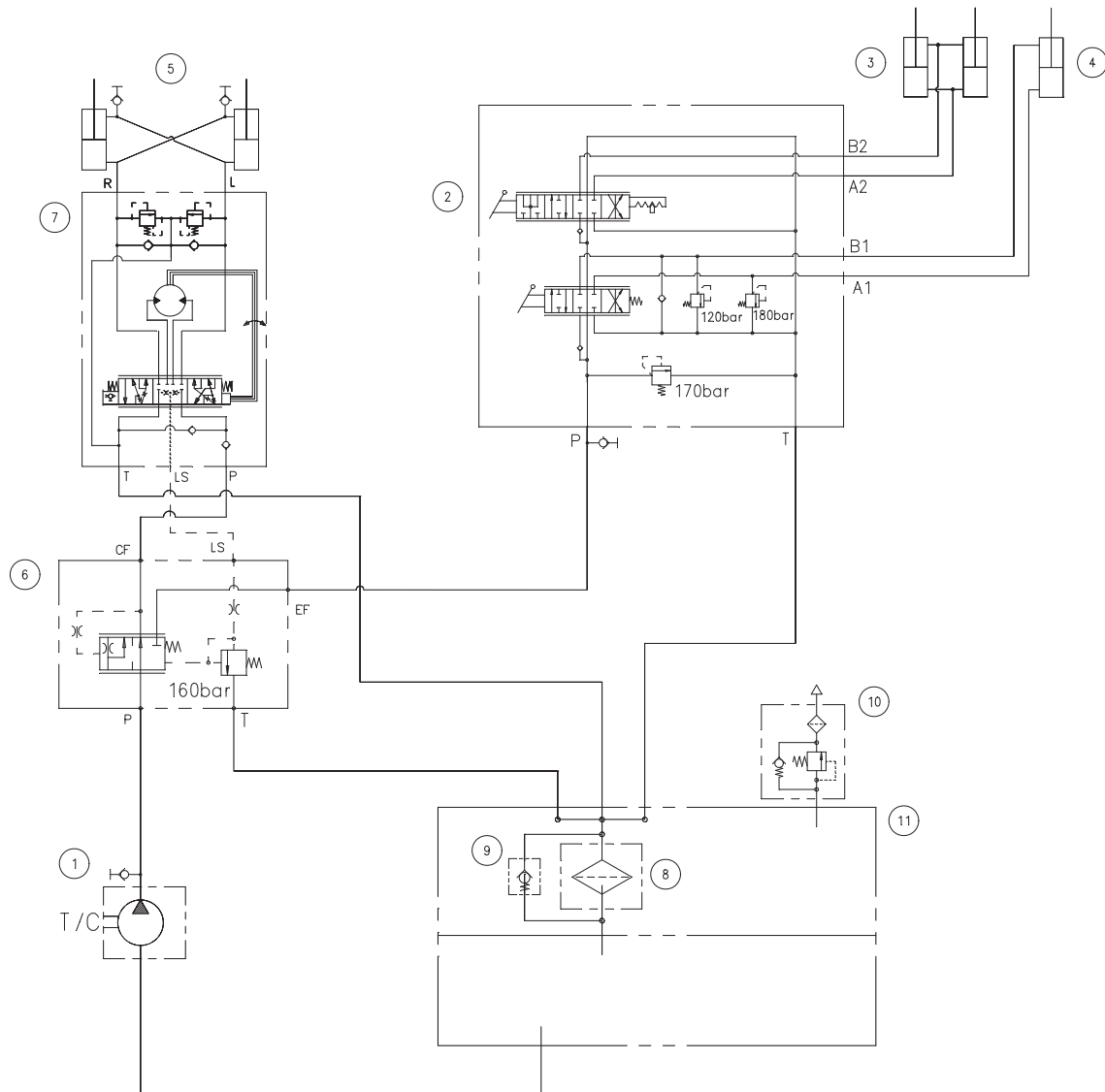
SECTION 5 WORK EQUIPMENT

Group 1 Hydraulic circuit	5-1
Group 2 Structure and function	5-3
Group 3 Operational checks and troubleshooting	5-15
Group 4 Test and adjustments	5-25

SECTION 5 WORK EQUIPMENT

GROUP 1 HYDRAULIC CIRCUIT

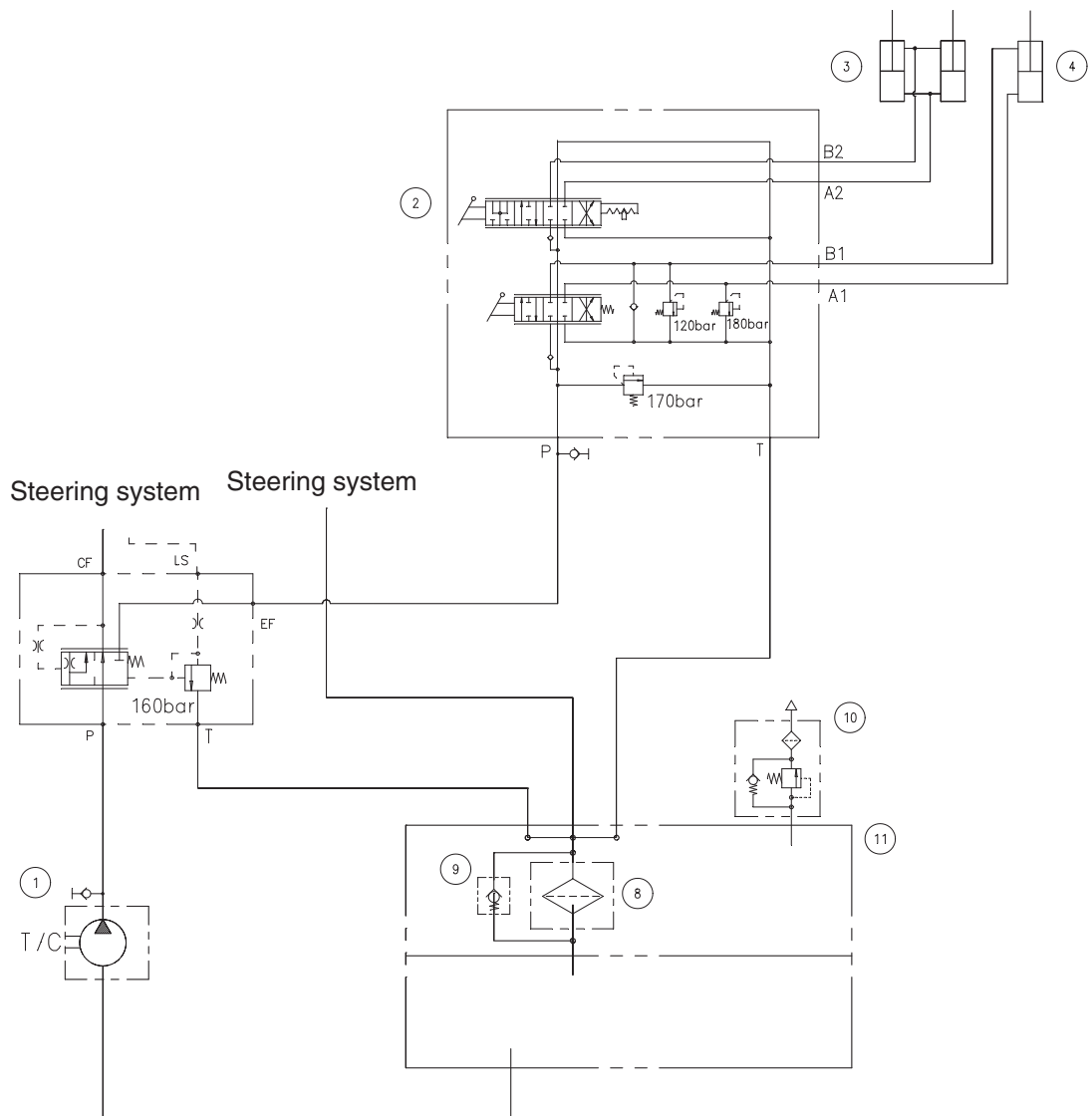
1. HYDRAULIC CIRCUIT



HL830S5WE01

- | | | | |
|---|--------------------|----|----------------|
| 1 | Main pump | 7 | Steering unit |
| 2 | Main control valve | 8 | Return filter |
| 3 | Boom cylinder | 9 | Bypass valve |
| 4 | Bucket cylinder | 10 | Air breather |
| 5 | Steering cylinder | 11 | Hydraulic tank |
| 6 | Priority valve | | |

2. WORK EQUIPMENT HYDRAULIC CIRCUIT



HL830S5WE02

- | | | | |
|---|--------------------|----|----------------|
| 1 | Main pump | 8 | Return filter |
| 2 | Main control valve | 9 | Bypass valve |
| 3 | Boom cylinder | 10 | Air breather |
| 4 | Bucket cylinder | 11 | Hydraulic tank |