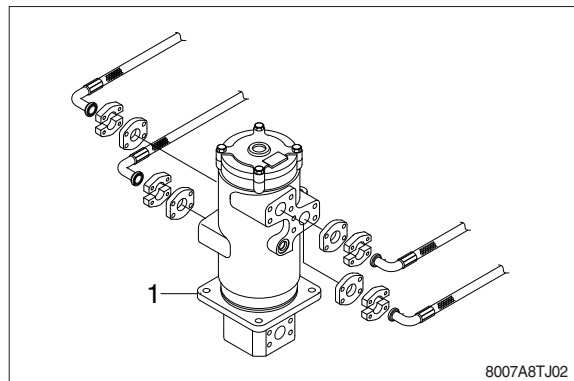


GROUP 8 TURNING JOINT

1. REMOVAL AND INSTALL

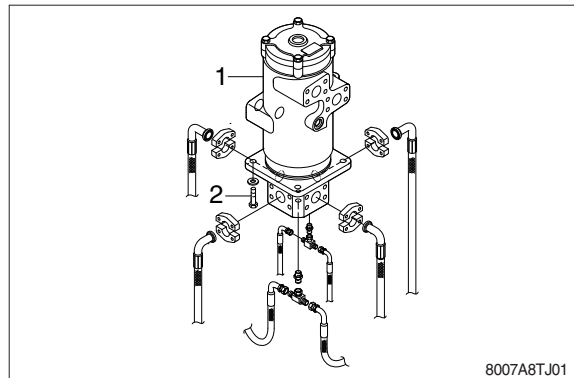
1) REMOVAL

- (1) Lower the work equipment to the ground and stop the engine.
- (2) Operate the control levers and pedals several times to release the remaining pressure in the hydraulic piping.
- (3) Loosen the breather slowly to release the pressure inside the hydraulic tank.
- ▲ Escaping fluid under pressure can penetrate the skin causing serious injury.
 - ※ When pipes and hoses are disconnected, the oil inside the piping will flow out, so catch it in oil pan.
- (4) Disconnect all hoses .
- (5) Sling the turning joint assembly(1) and remove the mounting bolt(2).
 - Weight : 75kg(165lb)
 - Tightening torque : $29.7 \pm 45\text{kgf} \cdot \text{m}$
($215 \pm 32.5\text{lb} \cdot \text{ft}$)
- (6) Remove the turning joint assembly.
 - ※ When removing the turning joint, check that all the hoses have been disconnected.



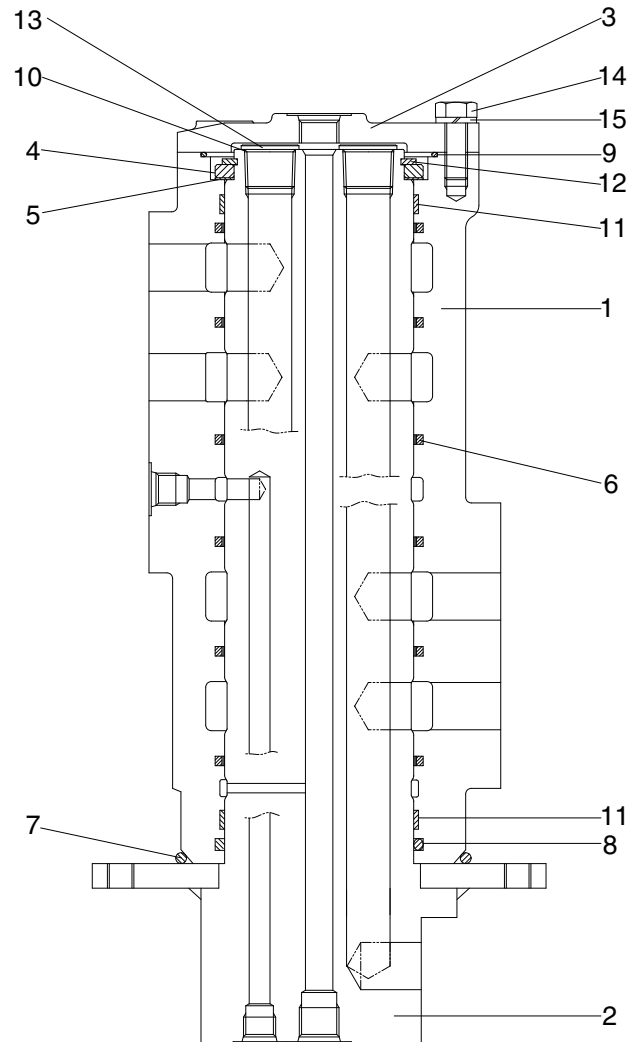
2) INSTALL

- (1) Carry out installation in the reverse order to removal.
 - ※ Take care of turning joint direction.
 - ※ Assemble hoses to their original positions.
 - ※ Confirm the hydraulic oil level and check the hydraulic oil leak or not.



2. DISASSEMBLY AND ASSEMBLY

1) STRUCTURE



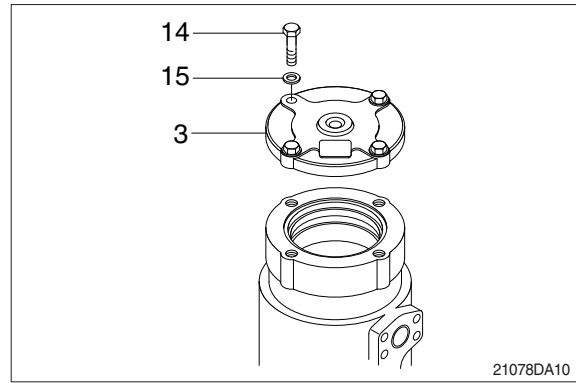
8007A8TJ03

1	Hub	6	Slipper seal	11	Wear ring
2	Shaft assembly	7	O-ring	12	Retaining ring
3	Cover	8	O-ring	13	Socket plug
4	Spacer	9	O-ring	14	Hexagon bolt
5	Shim	10	O-ring	15	Spring washer

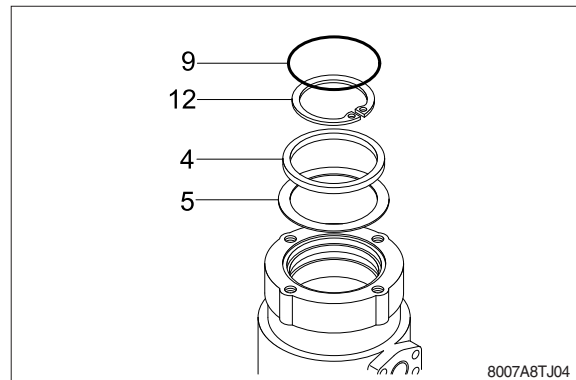
2) DISASSEMBLY

※ Before the disassembly, clean the turning joint.

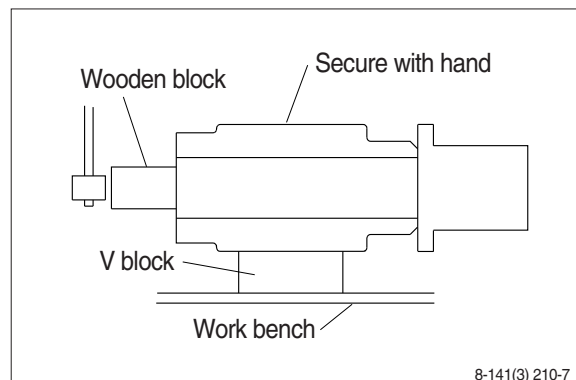
- (1) Remove bolts (14), washer (15) and cover (3).



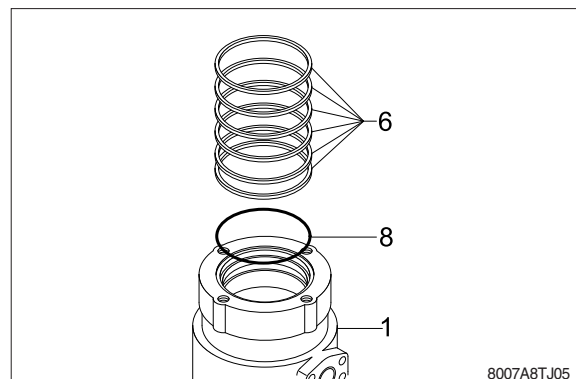
- (2) Remove O-ring (9).
- (3) Remove retainer ring (12), spacer (4) and shim (5).



- (4) Place body (1) on a V-block and by using a wood buffer at the shaft end, hit out shaft (2) to about 1/2 from the body with a hammer.
- ※ Take care not to damage the shaft (2) when remove body (1) or rest it sideways.
※ Put a fitting mark on body (1) and shaft (2).



- (5) Remove six slipper seals (6) and O-ring (8), from body (1).

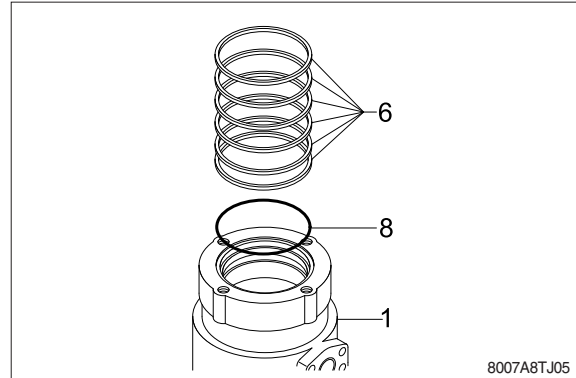


3) ASSEMBLY

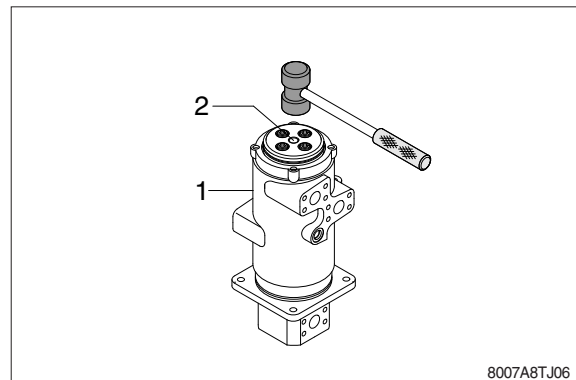
- ※ Clean all parts.
- ※ As a general rule, replace oil seals and O-ring.
- ※ Coat the sliding surfaces of all parts with engine oil or grease before installing.

(1) Fix six slipper seal (6) and O-ring (8), to body (1).

(2) Fit O-ring (7) to shaft (2).

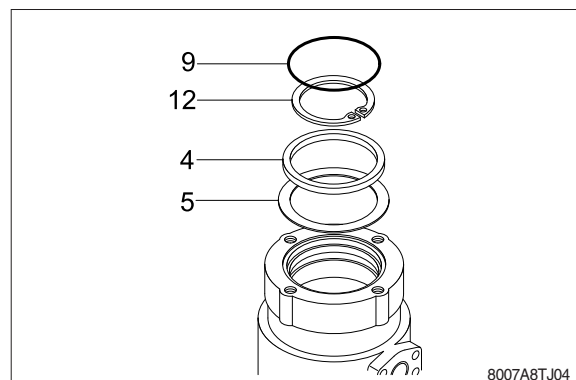


(3) Set shaft (2) on block, tap body (1) with a plastic hammer to install.



(4) Fit shim (5), spacer (4) and retainer ring (12) to shaft (2).

(5) Fit O-ring (9) to body (1).



- (7) Install cover (3) to body (1) and tighten bolts (14).
- Torque : 10~12.5 kgf · m
(72.3~90.4 lbf · ft)

