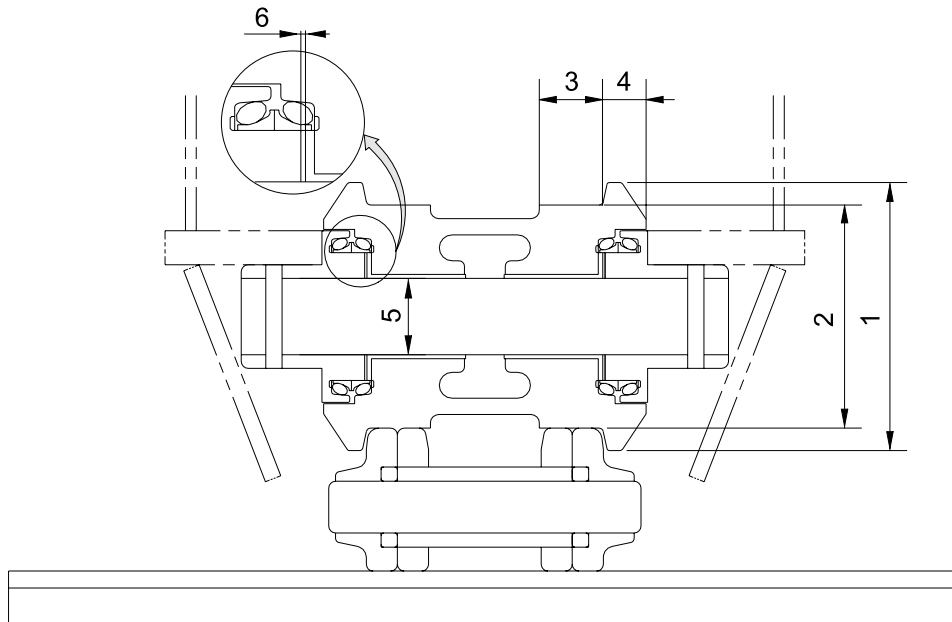


GROUP 3 TRACK AND WORK EQUIPMENT

1. TRACK

1) TRACK ROLLER

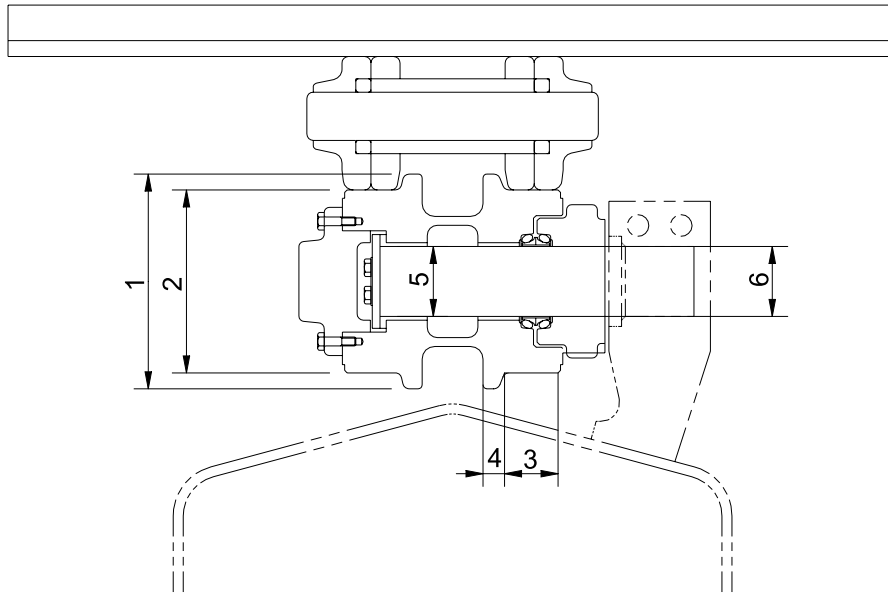


7077MS15

Unit : mm

No.	Check item	Criteria			Remedy
		Standard size		Repair limit	
1	Outside diameter of flange	Standard size		Repair limit	Rebuild or replace
		ø 149		-	
2	Outside diameter of tread	ø 125		ø 115	
3	Width of tread	35		40	
4	Width of flange	13		-	
5	Clearance between shaft and bushing	Standard size & tolerance		Standard clearance	Clearance limit
		Shaft	bushing		
		ø 40 $\begin{matrix} 0 \\ -0.03 \end{matrix}$	ø 40 $\begin{matrix} +0.3 \\ +0.25 \end{matrix}$		
6	Side clearance of roller (Both side)	Standard clearance		Clearance limit	
		0.3~0.9		2.0	

2) CARRIER ROLLER

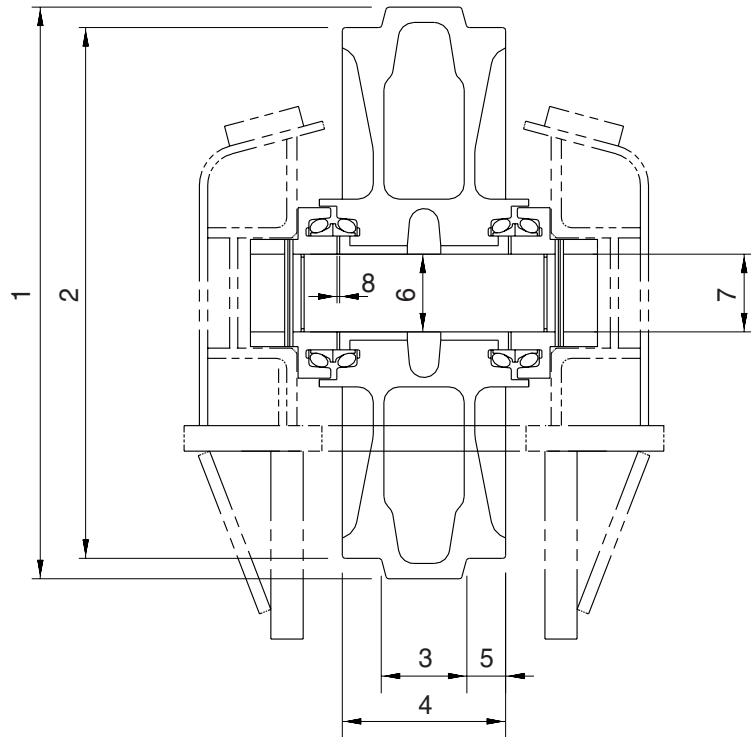


32077MS02

Unit : mm

No.	Check item	Criteria				Remedy
		Standard size		Repair limit		
1	Outside diameter of flange	ø 115		-		Rebuild or replace
2	Outside diameter of tread	ø 95		ø 85		
3	Width of tread	31		35		
4	Width of flange	11		-		
5	Clearance between shaft and bushing	Standard size & Tolerance		Standard clearance	Clearance limit	Replace bushing or shaft
		Shaft	Bushing			
		ø 38 $\begin{matrix} 0 \\ -0.03 \end{matrix}$	ø 38 $\begin{matrix} +0.35 \\ +0.3 \end{matrix}$	0.3 ~ 0.38	2.0	
6	Clearance between shaft and support	Shaft	Support	0.3 ~ 0.6	1.2	
		ø 38 $\begin{matrix} -0.2 \\ -0.3 \end{matrix}$	ø 38 $\begin{matrix} +0.3 \\ +0.1 \end{matrix}$			

3) IDLER

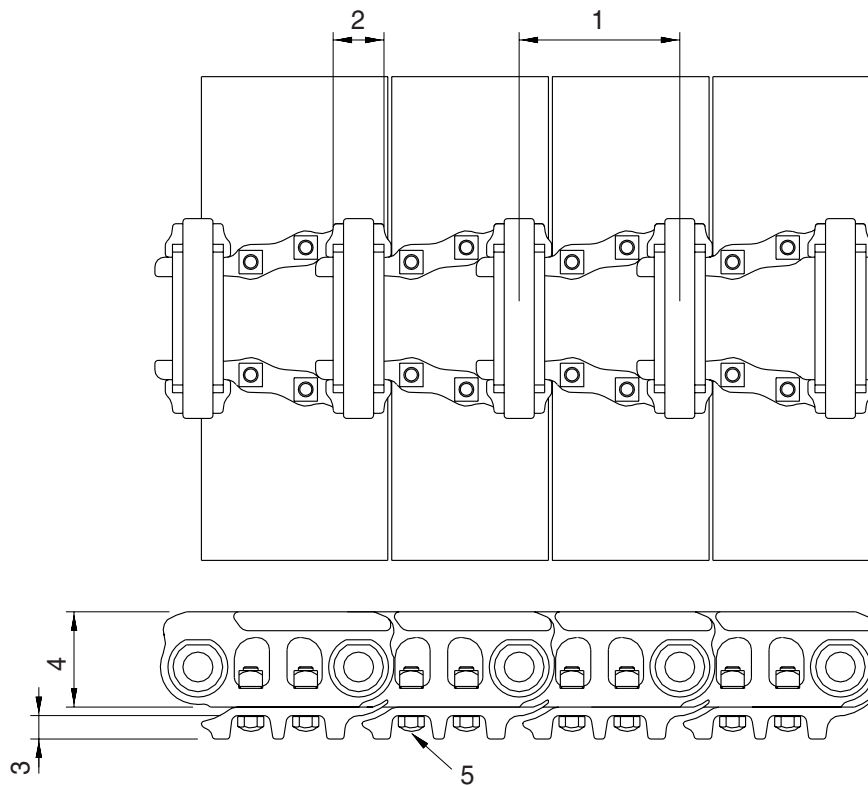


21037MS03

Unit : mm

No.	Check item	Criteria		Remedy		
		Standard size	Repair limit			
1	Outside diameter of protrusion	$\phi 440$	-	Rebuild or replace		
2	Outside diameter of tread	$\phi 410$	$\phi 400$			
3	Width of protrusion	40	-			
4	Total width	100	-			
5	Width of tread	30	35			
6	Clearance between shaft and bushing	Standard size & tolerance		Standard clearance	Clearance limit	Replace bushing
		Shaft	Bushing			
		$\phi 60 \begin{matrix} 0 \\ -0.03 \end{matrix}$	$\phi 60.3 \begin{matrix} +0.08 \\ +0.03 \end{matrix}$	0.33~ 0.41	2.0	
7	Clearance between shaft and support	Shaft	Support	0.03 ~ 0.1	1.2	Rebuild or Replace
		$\phi 60 \begin{matrix} 0 \\ -0.03 \end{matrix}$	$\phi 60 \begin{matrix} +0.07 \\ +0.03 \end{matrix}$			
8	Side clearance of idler (Both side)	Standard clearance		Clearance limit		Replace bushing
		0.35~1.3		2.0		

4) TRACK
 (1) Steel track

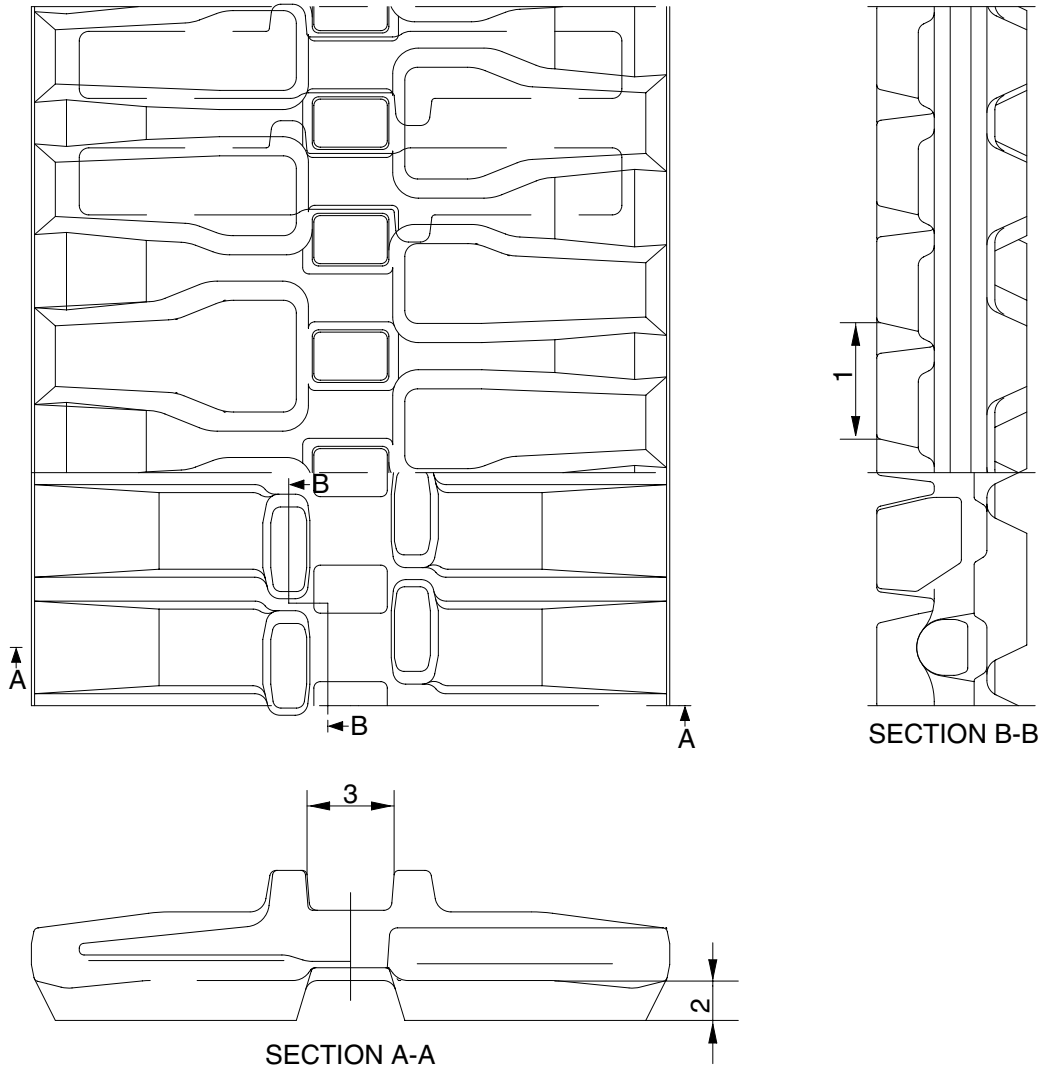


21037MS04

Unit : mm

No.	Check item	Criteria		Remedy
		Standard size	Repair limit	
1	Link pitch	154	158.3	Turn or replace
2	Outside diameter of bushing	∅ 41.26	∅ 34.26	
3	Height of grouser	0.4	10	Rebuild or replace
4	Height of link	74	66	
5	Tightening torque	Initial tightening torque : $25.5 \pm 2.5 \text{ kgf} \cdot \text{m}$		Retighten

(2) Rubber shoe spec

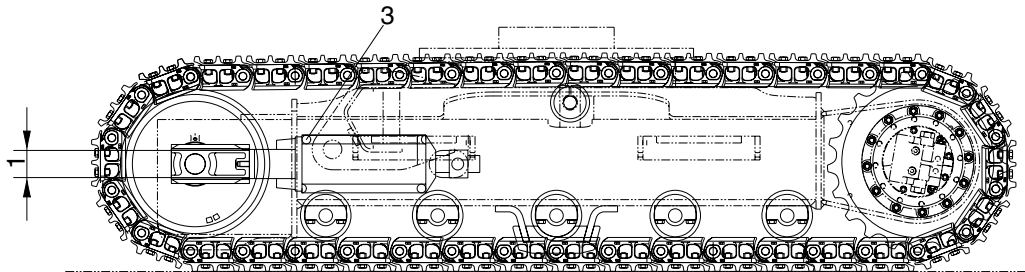
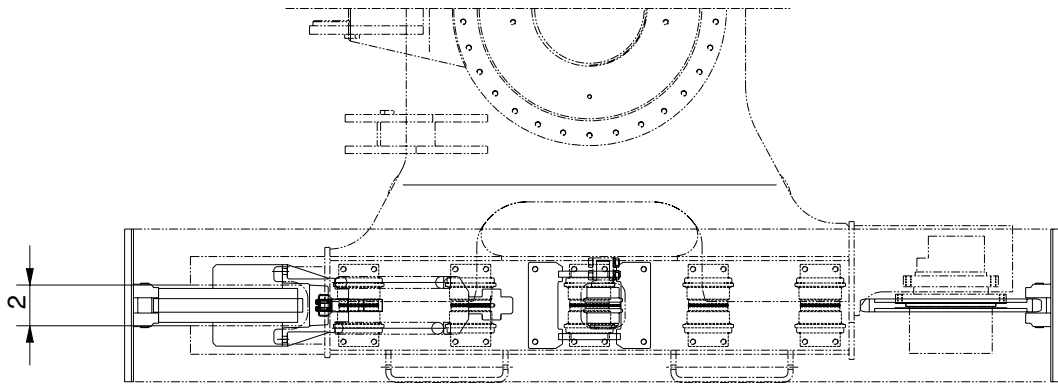


R5576MC17

Unit : mm

No	Check item	Criteria			Remedy
		Standard size	Tolerance	Repair limit	
1	Link pitch	83.5	± 1.0	87	Replace
2	Height of grouser	30	-	5	
3	Width of link	52	-	70	

5) TRACK FRAME AND RECOIL SPRING

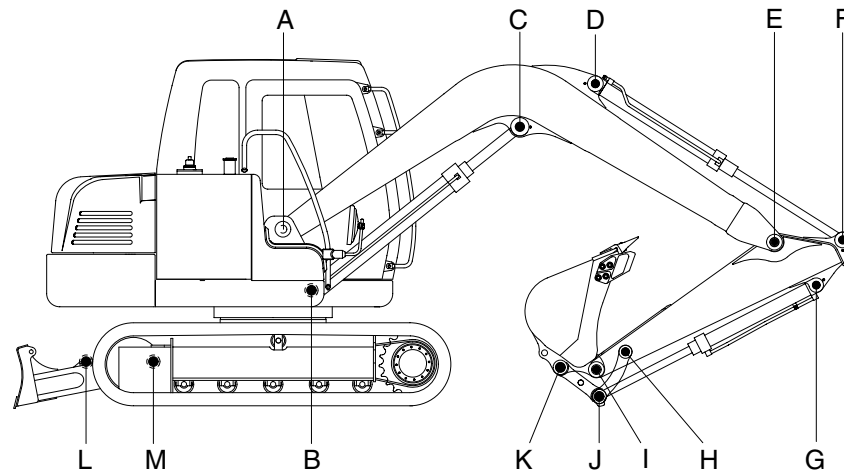


7077MS20

Unit : mm

No.	Check item	Criteria				Remedy	
			Standard size	Tolerance	Repair limit		
1	Vertical width of idler guide	Track frame	92	+2 0	96	Rebuild or replace	
		Idler support	90	-0 -1.5	87		
2	Horizontal width of idler guide	Track frame	172	+2 0	176		
		Idler support	170	-	168		
3	Recoil spring	Standard size		Repair limit		Replace	
		Free length	Installation length	Installation load	Free length		Installation load
		∅ 170 × 370	320	5,083kg	-		4,174kg

2. WORK EQUIPMENT



7077MS16

Unit : mm

Mark	Measuring point (Pin and Bushing)	Normal value	Pin		Bushing		Remedy & Remark
			Recomm. service limit	Limit of use	Recomm. service limit	Limit of use	
A	Boom Rear	65	64	63.5	65.5	66	Replace
B	Boom Cylinder Head	65	64	63.5	65.5	66	"
C	Boom Cylinder Rod	65	64	63.5	65.5	66	"
D	Arm Cylinder Head	65	64	63.5	65.5	66	"
E	Boom Front	65	64	63.5	65.5	66	"
F	Arm Cylinder Rod	65	64	63.5	65.5	66	"
G	Bucket Cylinder Head	50	49	48.5	50.5	51	"
H	Arm Link	55	54	53.5	55.5	56	"
I	Bucket and Arm Link	55	54	53.5	55.5	56	"
J	Bucket Cylinder Rod	55	54	53.5	55.5	56	"
K	Bucket Link	55	54	53.5	55.5	56	"
L	Dozer cylinder	65	64	63.5	65.5	66	"
M	Dozer and frame	55	54	53.5	55.5	56	"