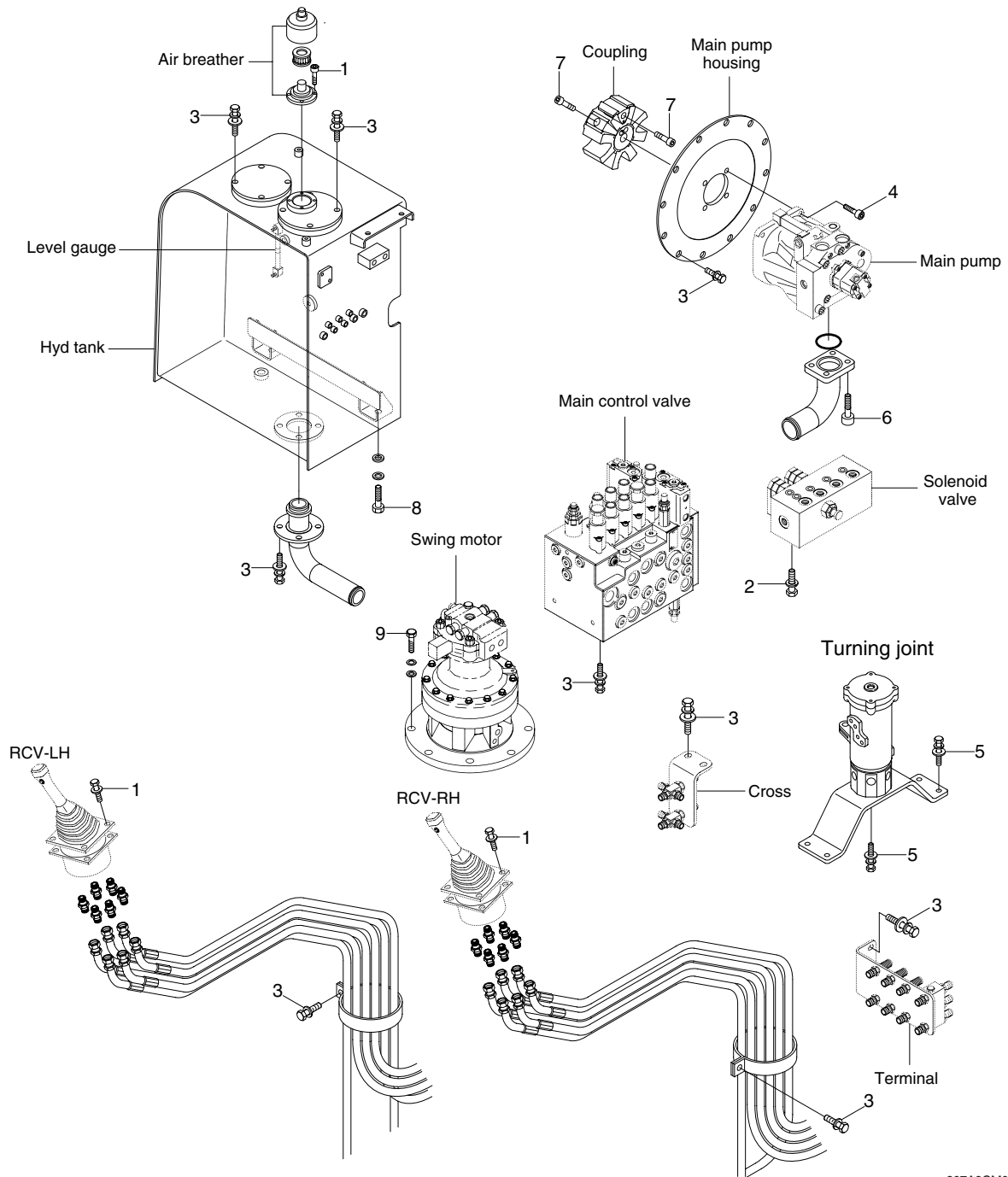


# GROUP 4 HYDRAULIC SYSTEM

## 1. HYDRAULIC COMPONENTS MOUNTING 1



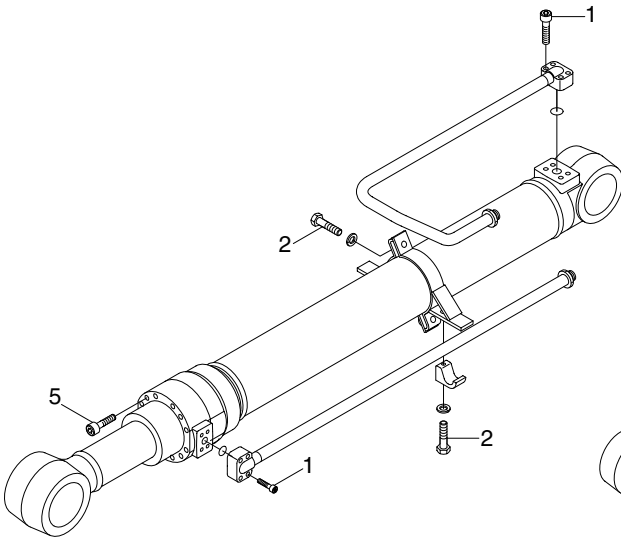
807A9CM05

### · Tightening torque

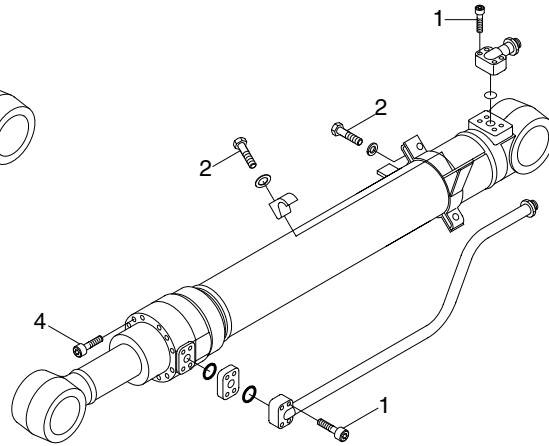
Item	Size	kgf · m	lbf · ft
1	M 6 × 1.0	1.44 ± 0.3	10.4 ± 2.2
2	M 8 × 1.25	2.5 ± 0.5	18.1 ± 3.6
3	M 10 × 1.5	6.9 ± 1.4	49.9 ± 10.1
4	M 12 × 1.75	12 ± 1.0	86.8 ± 7.2
5	M 12 × 1.75	12.3 ± 1.3	88.2 ± 9.4

Item	Size	kgf · m	lbf · ft
6	M 12 × 1.75	12.8 ± 3.0	92.6 ± 21.7
7	M 14 × 2.0	14 ± 1.0	101 ± 7.2
8	M 16 × 2.0	25 ± 2.5	181 ± 18.1
9	M 16 × 2.0	29.7 ± 3.2	215 ± 23.1
-	-	-	-

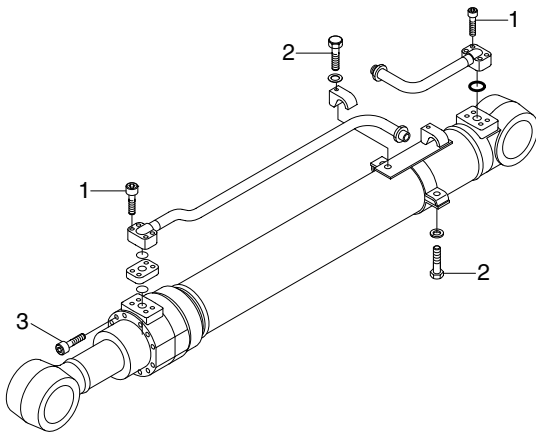
## 2. HYDRAULIC COMPONENTS MOUNTING 2



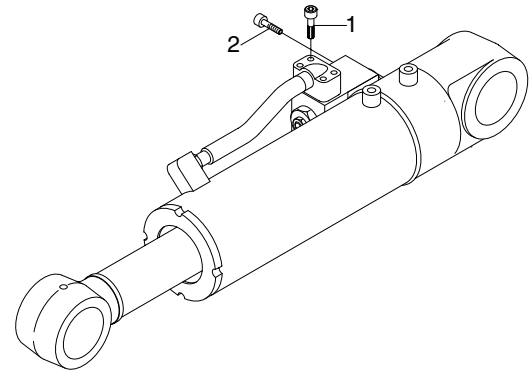
BOOM CYLINDER



ARM CYLINDER



BUCKET CYLINDER



DOZER CYLINDER

807A9CM06

### · Tightening torque

Item	Size	kgf · m	lbf · ft
1	M 8×1.25	3.25±0.25	23.6±1.81
2	M10×1.5	2.0±0.2	14.5±1.45
3	M12×1.75	11.4±0.4	82.5±2.9

Item	Size	kgf · m	lbf · ft
4	M14×2.0	23.5±0.5	170±3.62
5	M16×2.0	36±1.0	260±7.2
-	-	-	-