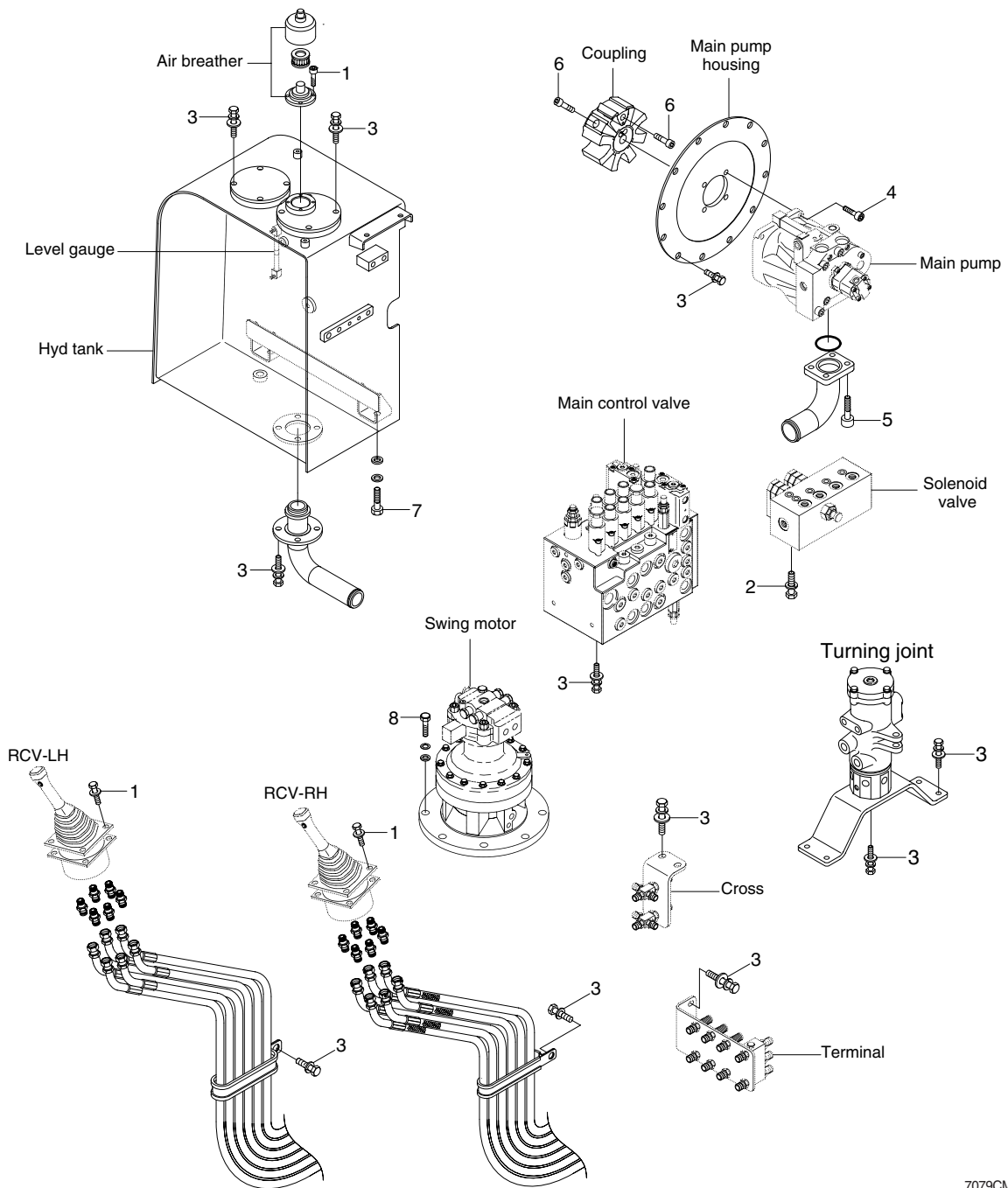


# GROUP 4 HYDRAULIC SYSTEM

## 1. HYDRAULIC COMPONENTS MOUNTING 1



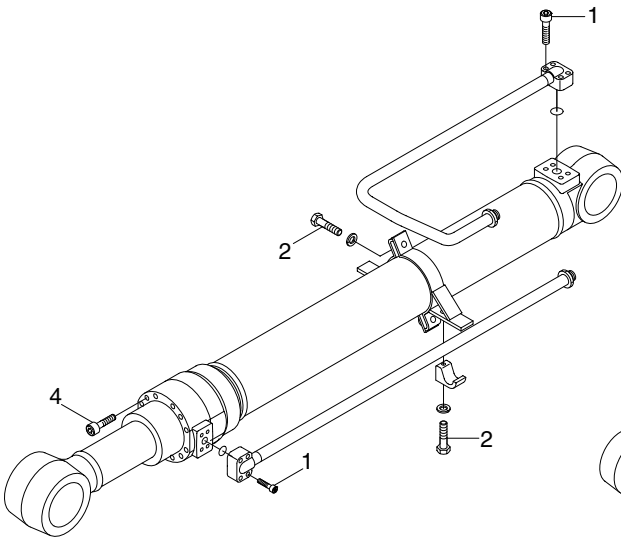
7079CM05

### · Tightening torque

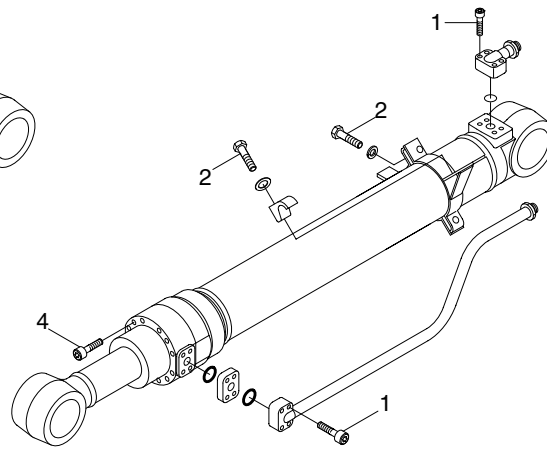
Item	Size	kgf · m	lbf · ft
1	M 6 × 1.0	1.44 ± 0.3	10.4 ± 2.2
2	M 8 × 1.25	2.5 ± 0.5	18.1 ± 3.6
3	M 10 × 1.5	6.9 ± 1.4	49.9 ± 10.1
4	M 12 × 1.75	12 ± 1	86.8 ± 7.2

Item	Size	kgf · m	lbf · ft
5	M 12 × 1.75	12.8 ± 3.0	92.6 ± 21.7
6	M 14 × 2.0	14 ± 1	101 ± 7.2
7	M 16 × 2.0	25 ± 2.5	181 ± 18.1
8	M 16 × 2.0	29.6 ± 3.2	214 ± 23.1

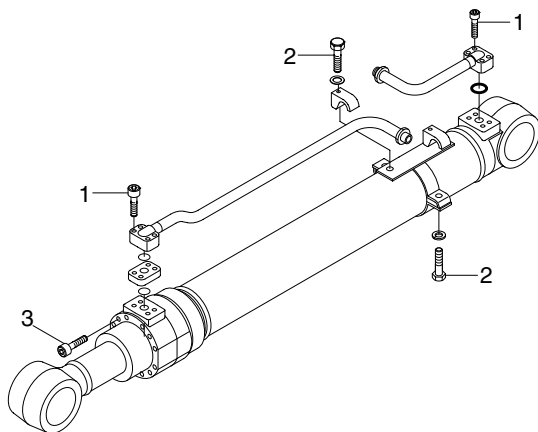
## 2. HYDRAULIC COMPONENTS MOUNTING 2



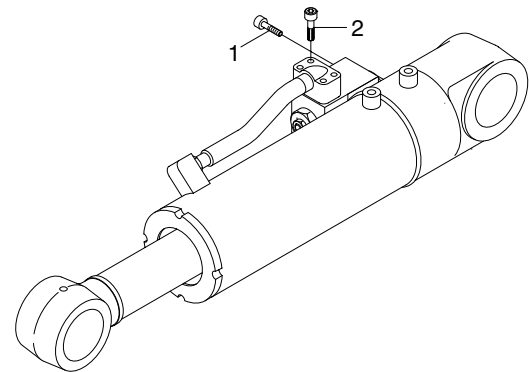
BOOM CYLINDER



ARM CYLINDER



BUCKET CYLINDER



DOZER CYLINDER

7079CM07

### · Tightening torque

Item	Size	kgf · m	lbf · ft
1	M 8×1.25	2.7±0.3	19.6±2.2
2	M10×1.5	3.2±0.3	23.1±2.2

Item	Size	kgf · m	lbf · ft
3	M12×1.75	9.4±1	68±7.2
4	M14×2.0	15±1.5	108±10.8