

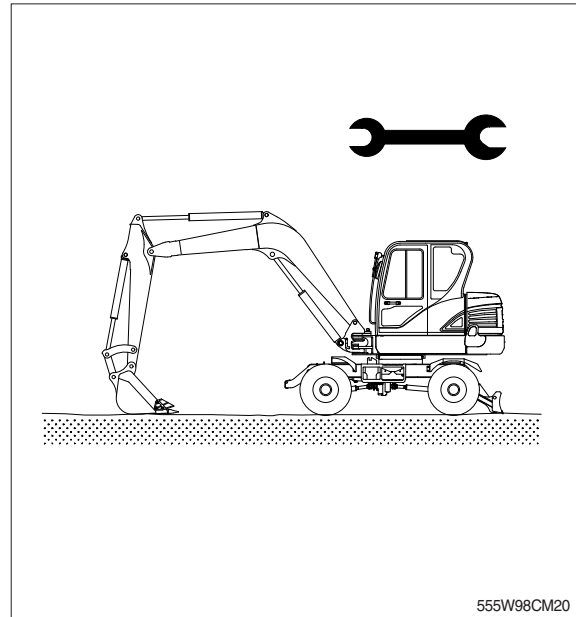
SECTION 8 COMPONENT MOUNTING TORQUE

Group 1	Introduction guide	8-1
Group 2	Engine system	8-2
Group 3	Electric system	8-4
Group 4	Hydraulic system	8-5
Group 5	Power train	8-7
Group 6	Structure	8-8
Group 7	Work equipment	8-11

SECTION 8 COMPONENT MOUNTING TORQUE

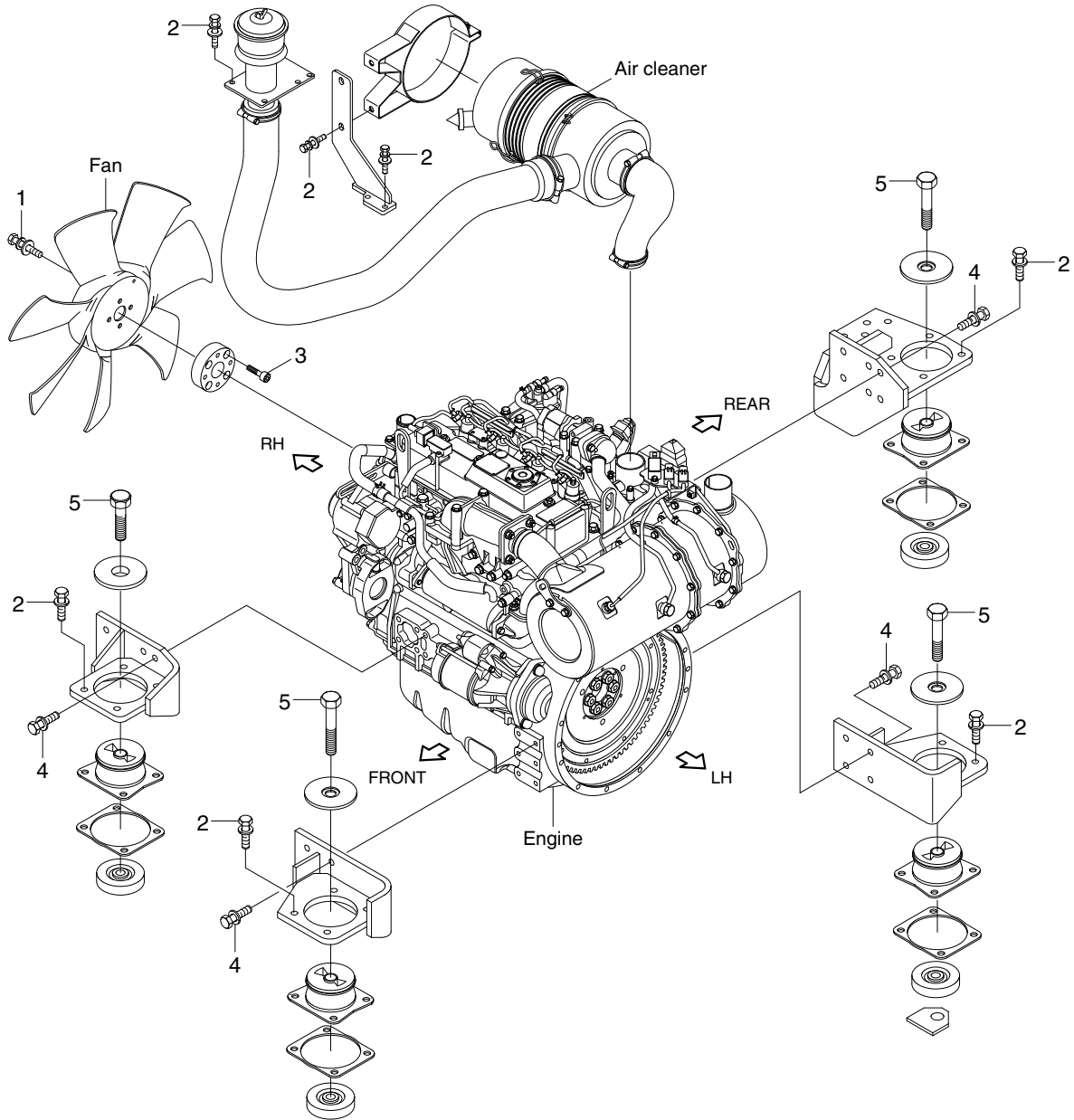
GROUP 1 INTRODUCTION GUIDE

1. This section shows bolt specifications and standard torque values needed when mounting components to the machine.
 2. Use genuine Hyundai spare parts.
We expressly point out that Hyundai will not accept any responsibility for defects resulted from non-genuine parts.
In such cases Hyundai cannot assume liability for any damage.
- ※ Only metric fasteners can be used and incorrect fasteners may result in machine damage or malfunction.
 - ※ Before installation, clean all the components with a non-corrosive cleaner. Bolts and threads must not be worn or damaged.



GROUP 2 ENGINE SYSTEM

1. ENGINE AND ACCESSORIES MOUNTING



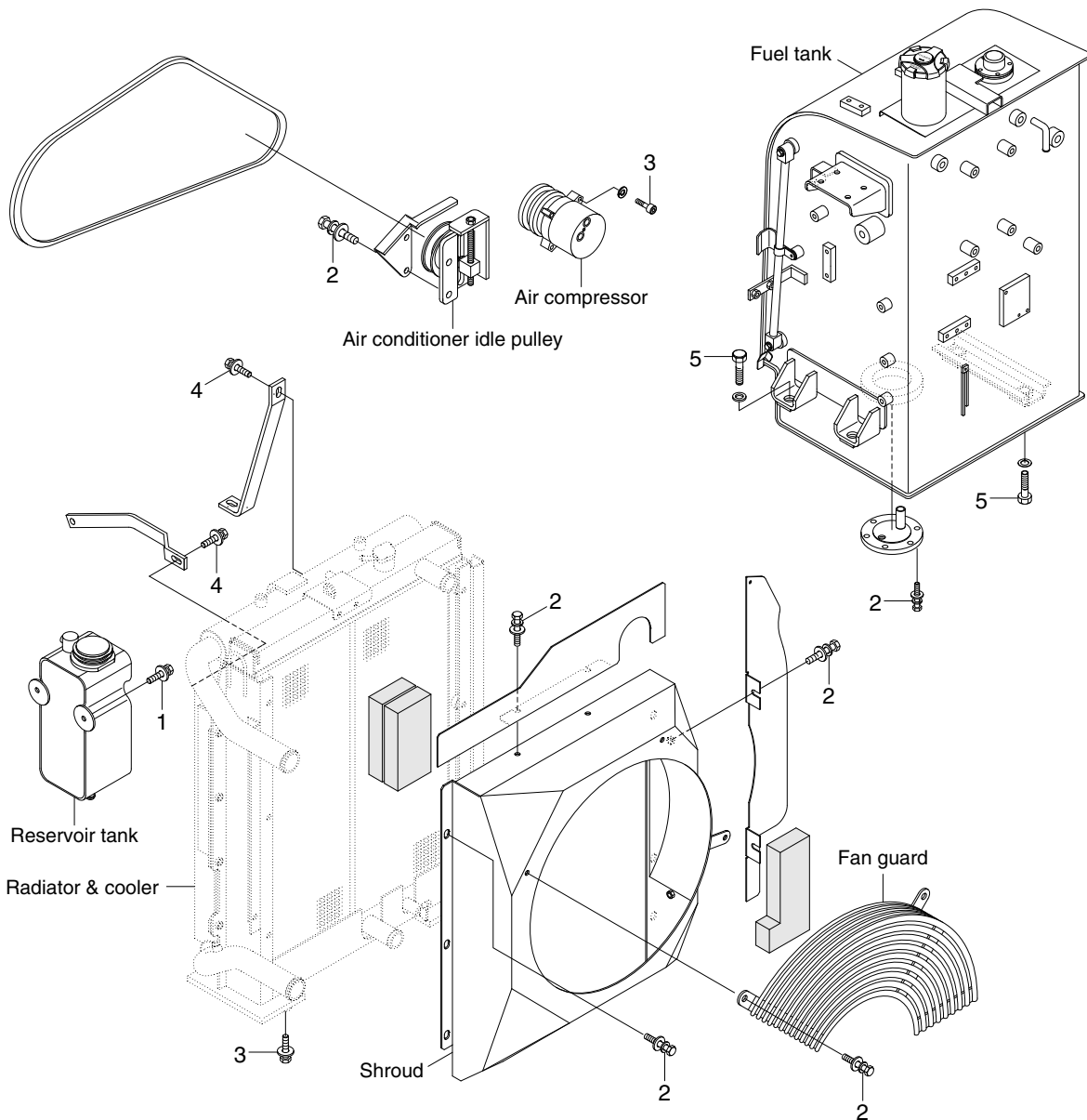
55W9A8CM01

·Tightening torque

Item	Size	kgf·m	lbf·ft
1	M 8×1.25	1.8±0.2	13.0±1.4
2	M 8×1.25	2.5±0.5	18.1±3.6
3	M 8×1.25	3.0±0.2	21.7±1.4

Item	Size	kgf·m	lbf·ft
4	M10×1.5	6.9±1.0	49.9±7.2
5	M16×2.0	25±2.5	181±18

2. COOLING SYSTEM AND FUEL TANK MOUNTING



55W9A8CM02

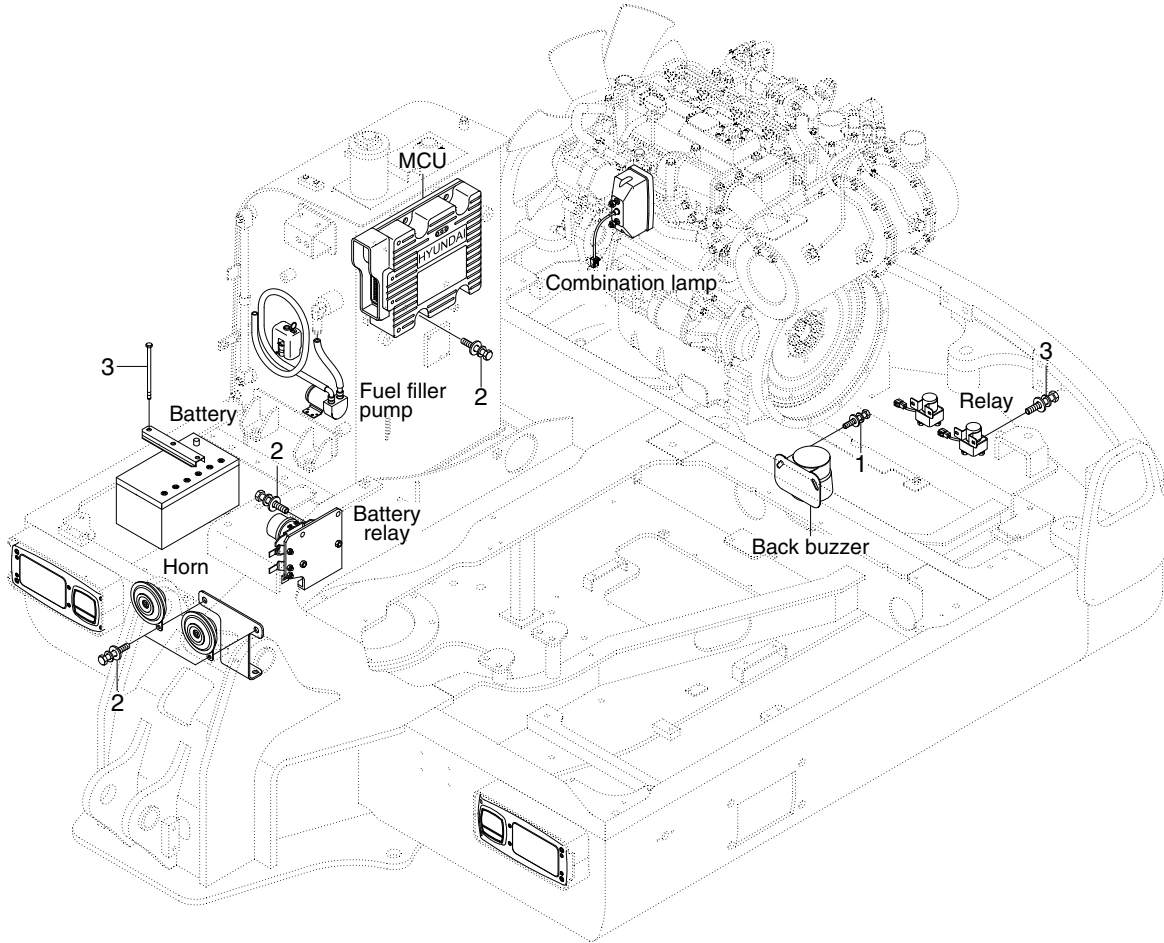
·Tightening torque

Item	Size	kgf·m	lbf·ft
1	M 6×1.0	1.05±0.2	7.6±1.45
2	M 8×1.25	2.5±0.5	18.1±3.6
3	M10×1.25	6.9±1.4	49.9±10.1

Item	Size	kgf·m	lbf·ft
4	M12×1.75	12.8±3.0	92.6±21.7
5	M16×2.0	29.7±4.5	215±32.5

GROUP 3 ELECTRIC SYSTEM

1. ELECTRIC COMPONENTS MOUNTING 1



55W9A8CM03

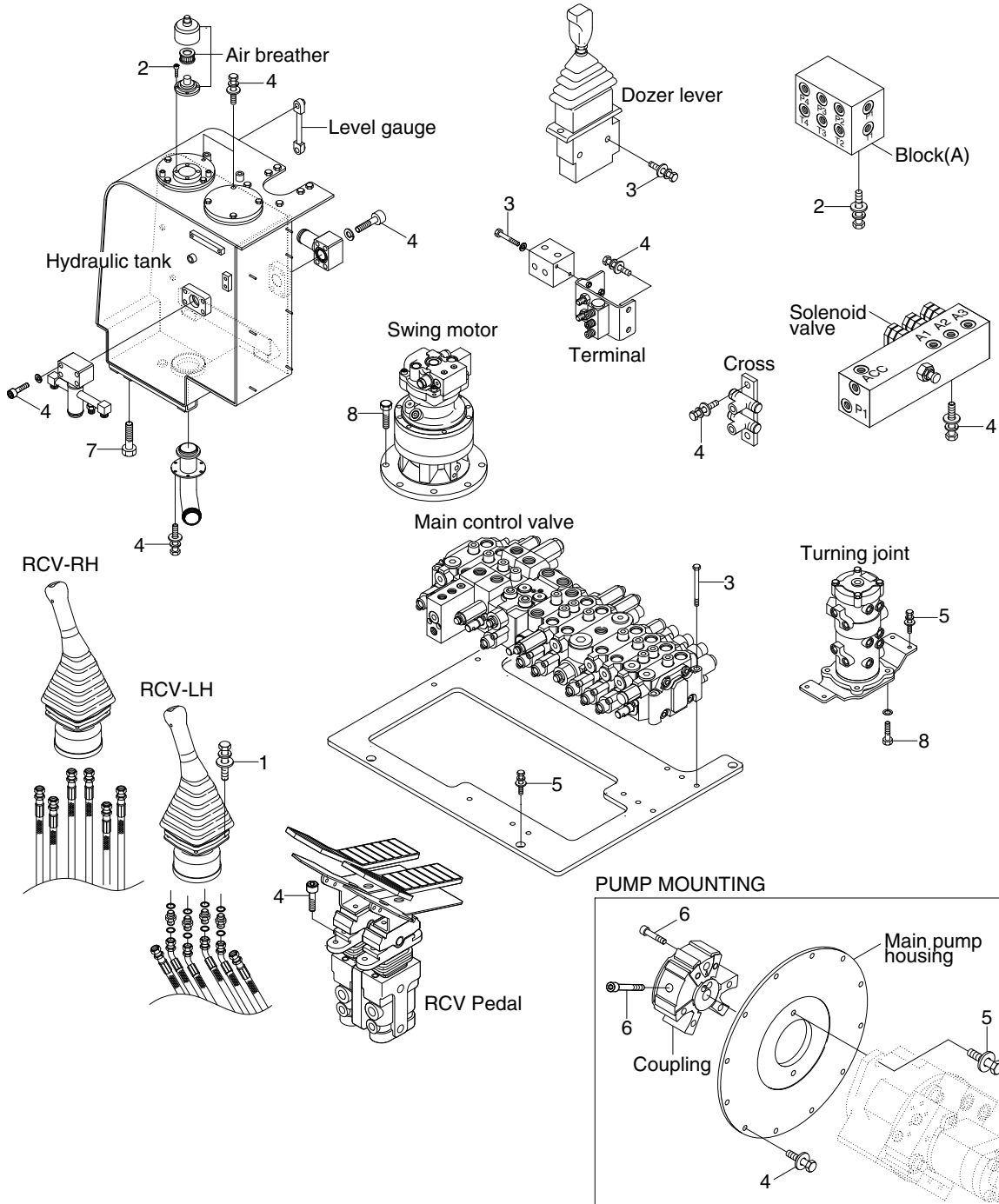
· Tightening torque

Item	Size	kgf·m	lbf·ft
1	M 6×1.0	1.05±0.2	7.6±1.45
2	M 8×1.25	2.5±0.5	18.1±3.6

Item	Size	kgf·m	lbf·ft
3	M10×1.5	6.9±1.4	49.9±10.1
4	-	2.0±0.2	14.5±1.4

GROUP 4 HYDRAULIC SYSTEM

1. HYDRAULIC COMPONENTS MOUNTING 1



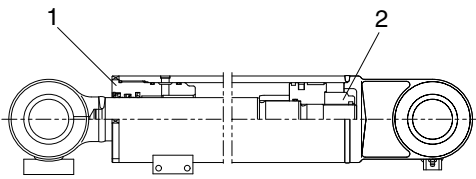
55W9A8CM05

Tightening torque

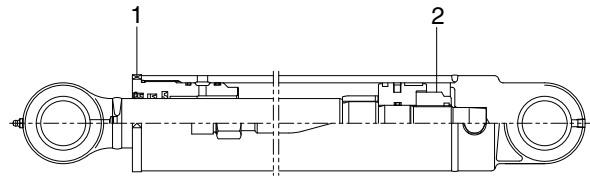
Item	Size	kgf·m	lbf·ft
1	M 6×1.0	1.05±0.2	7.6±1.45
2	M 6×1.0	1.44±0.3	10.4±2.2
3	M 8×1.25	2.5±0.5	18.1±3.6
4	M10×1.5	6.9±1.4	49.9±10.1

Item	Size	kgf·m	lbf·ft
5	M12×1.75	12.2±1.3	88.2±9.4
6	M14×2.0	14.0±1.0	101±7.2
7	M16×2.0	25.0±2.5	118±18.1
8	M16×2.0	29.7±4.5	215±33.0

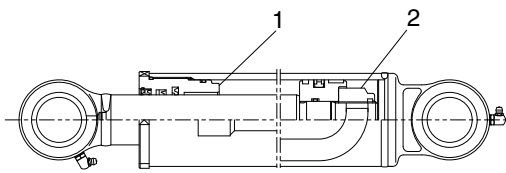
2. HYDRAULIC COMPONENTS MOUNTING 2



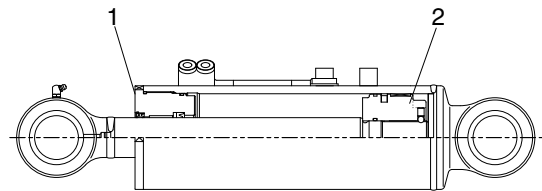
BOOM CYLINDER



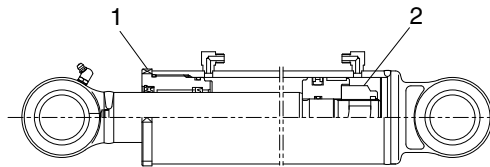
ARM CYLINDER



BUCKET CYLINDER



DOZER CYLINDER



BOOM SWING CYLINDER

55W98CM07

· Tightening torque

Gland (1)

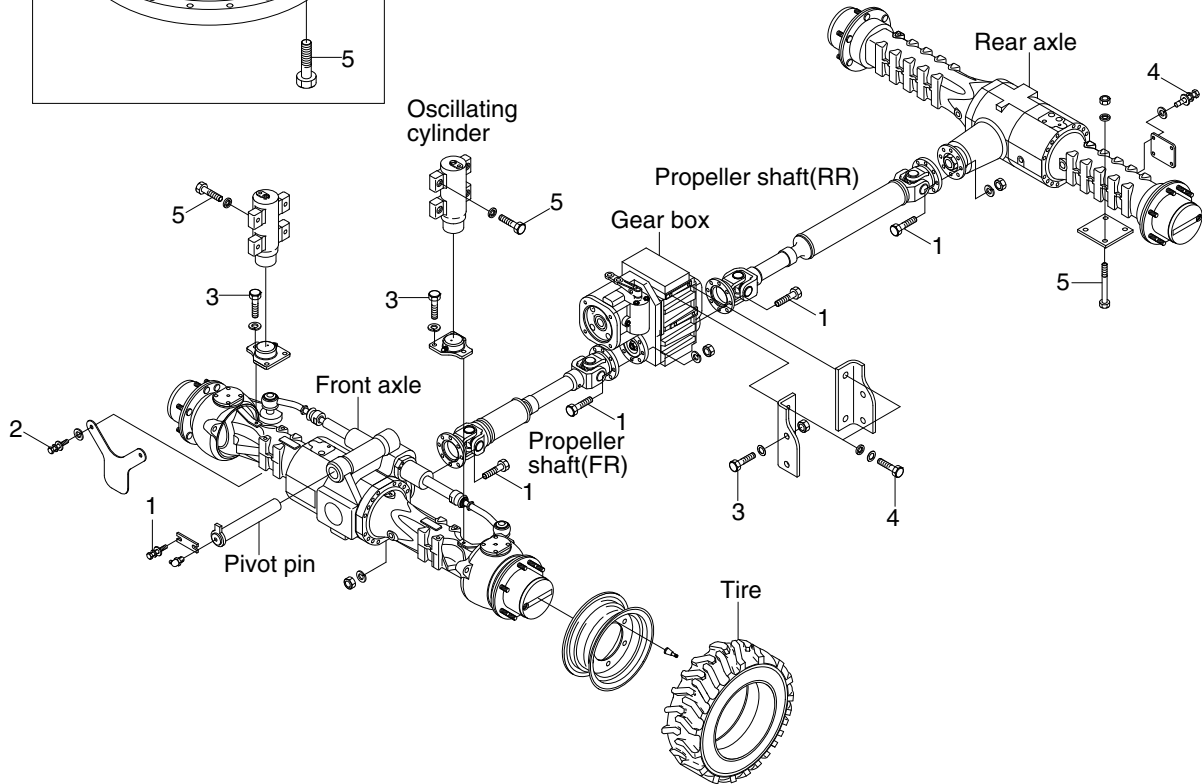
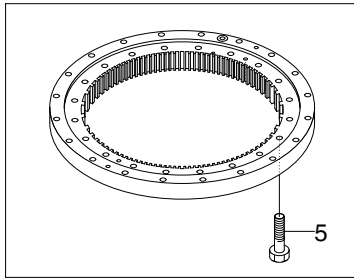
Item	Size	kgf·m	lbf·ft
Boom cylinder	M115	70±7.0	506±51
Arm cylinder	M95	70±7.0	506±51
Bucket cylinder	M85	75±7.5	542±54
Dozer cylinder	M105	70±7.0	506±51
B/S cylinder	M100	70±7.0	506±51

Lock nut (2)

Item	Size	kgf·m	lbf·ft
Boom cylinder	M45	50±5.0	362±36
Arm cylinder	M39	75±7.5	542±54
Bucket cylinder	M36	75±7.5	542±54
Dozer cylinder	M39	97.5±9.8	705±71
B/S cylinder	M36	97.5±9.8	705±71

GROUP 5 POWER TRAIN

Swing bearing



55W98CM08

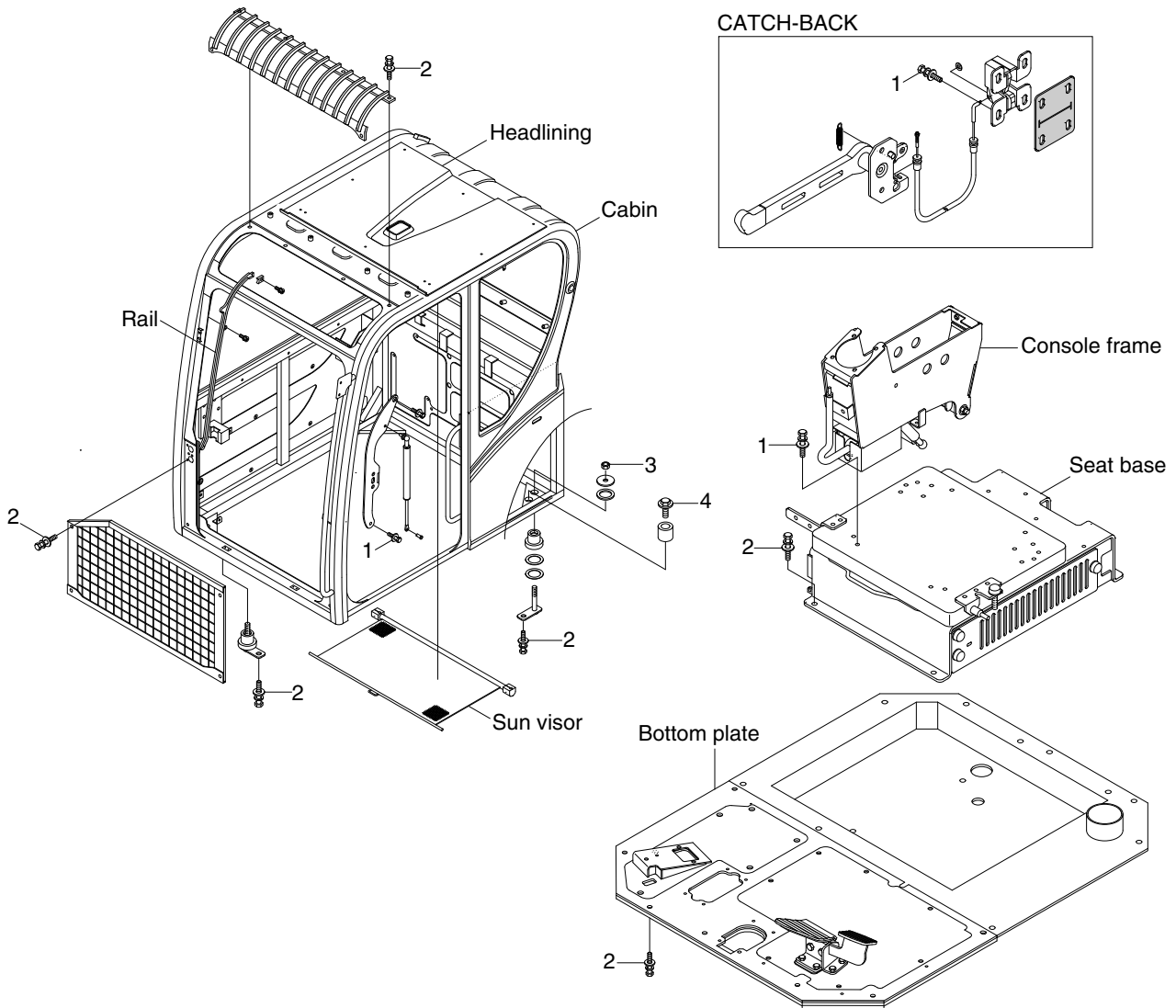
Tightening torque

Item	Size	kgf·m	lbf·ft
1	M10×1.5	6.9±1.4	49.9±10.1
2	M10×1.5	12.3±2.5	89±18
3	M12×1.75	12.8±3.0	92.6±21.7

Item	Size	kgf·m	lbf·ft
4	M14×2.0	20.0±2.0	145±14.0
5	M16×2.0	29.7±4.5	215±32.5
6	M18×2.0	41.0±5.0	297±36.0

GROUP 6 STRUCTURE

1. CAB AND ACCESSORIES MOUNTING



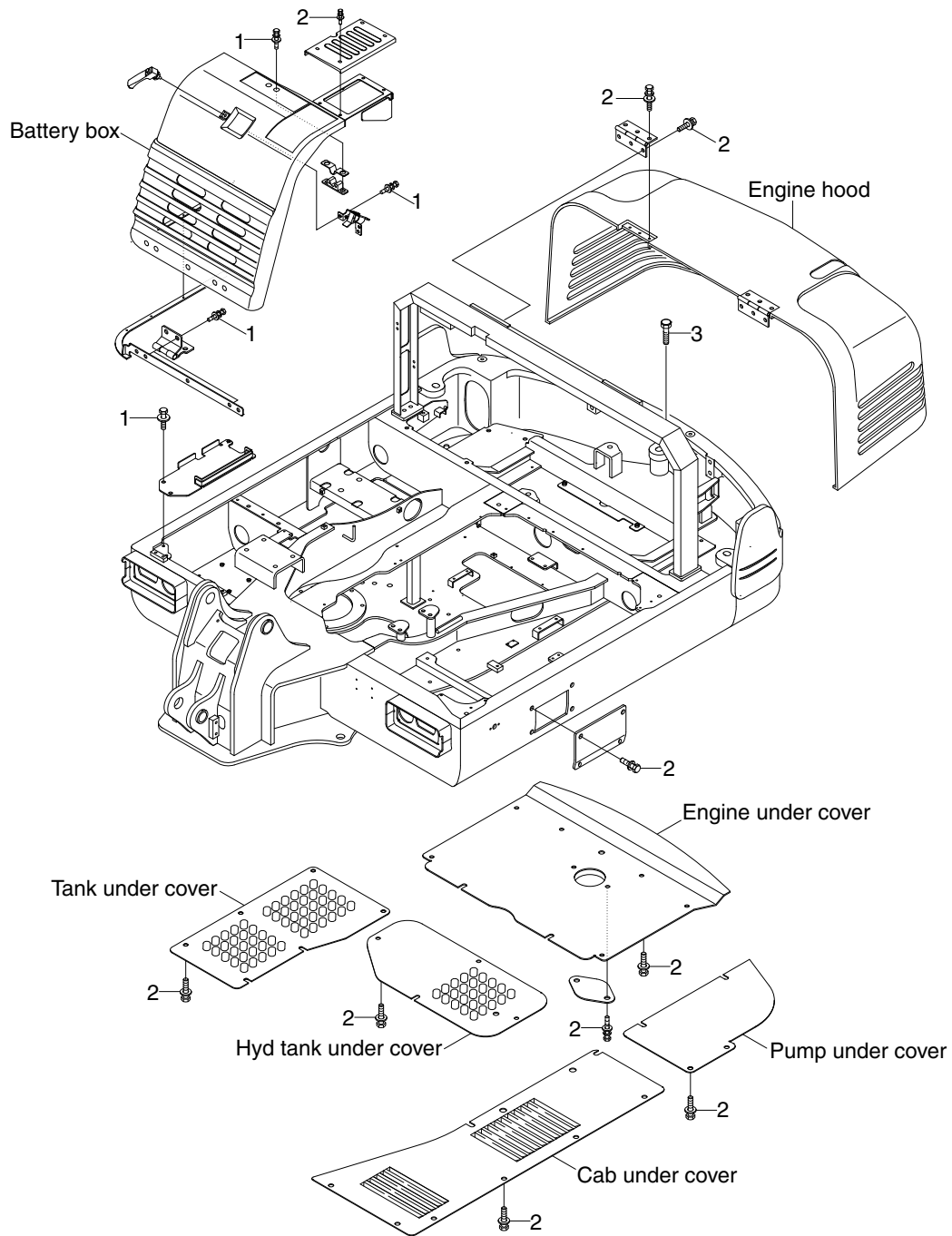
55W98CM09

Tightening torque

Item	Size	kgf·m	lbf·ft
1	M 8×1.25	2.5±0.5	18.1±3.6
2	M10×1.5	4.7±0.9	34.0±6.5

Item	Size	kgf·m	lbf·ft
3	M12×1.75	12.8±3.0	92.6±21.7
4	M16×2.0	29.7±4.5	215±32.5

2. COWLING MOUNTING



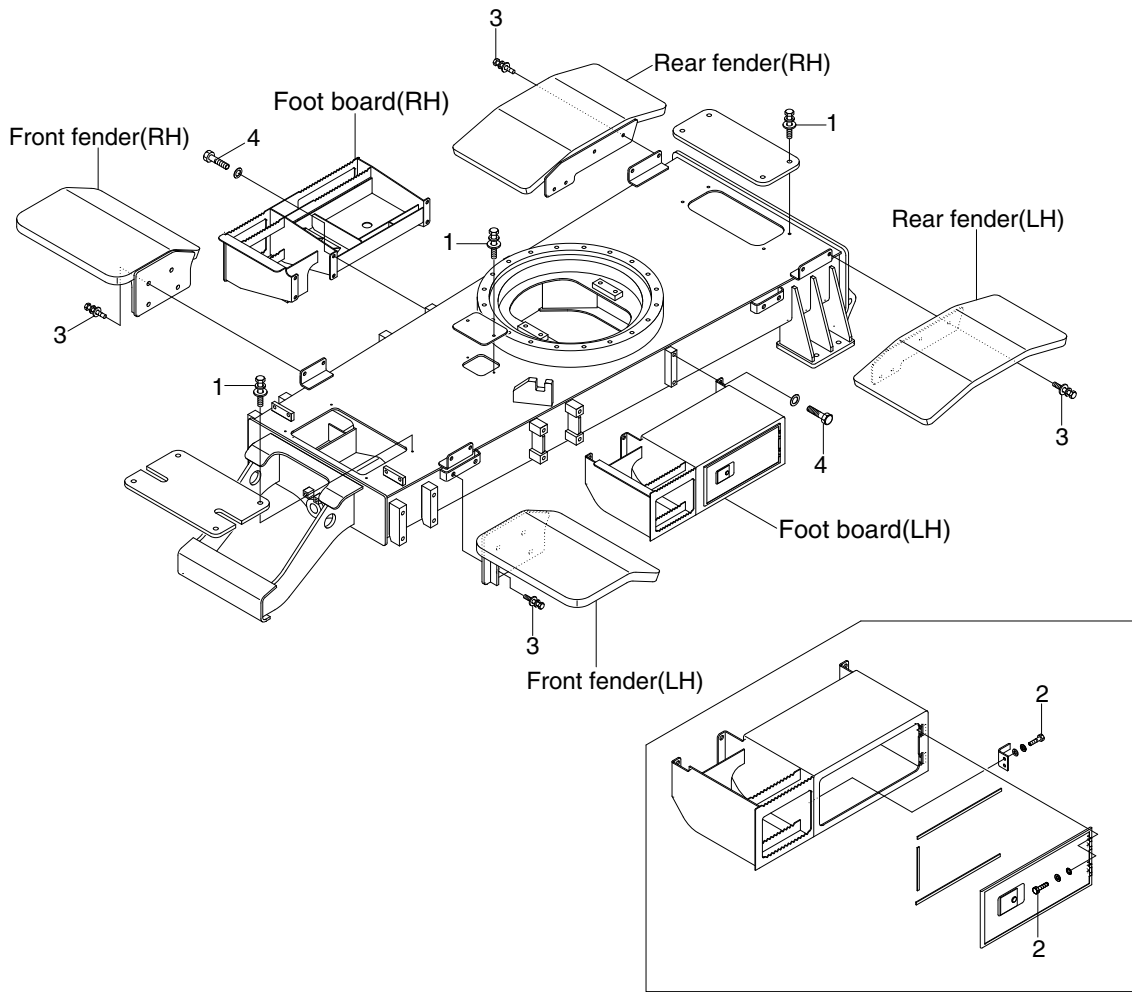
55W98CM10

· Tightening torque

Item	Size	kgf·m	lbf·ft
1	M 8×1.25	2.5±0.5	18.1±3.6
2	M10×1.5	6.9±1.4	34.0±6.5

Item	Size	kgf·m	lbf·ft
3	M20×2.5	57.8±6.4	418±46.3

3. COVER AND FOOT BOARD



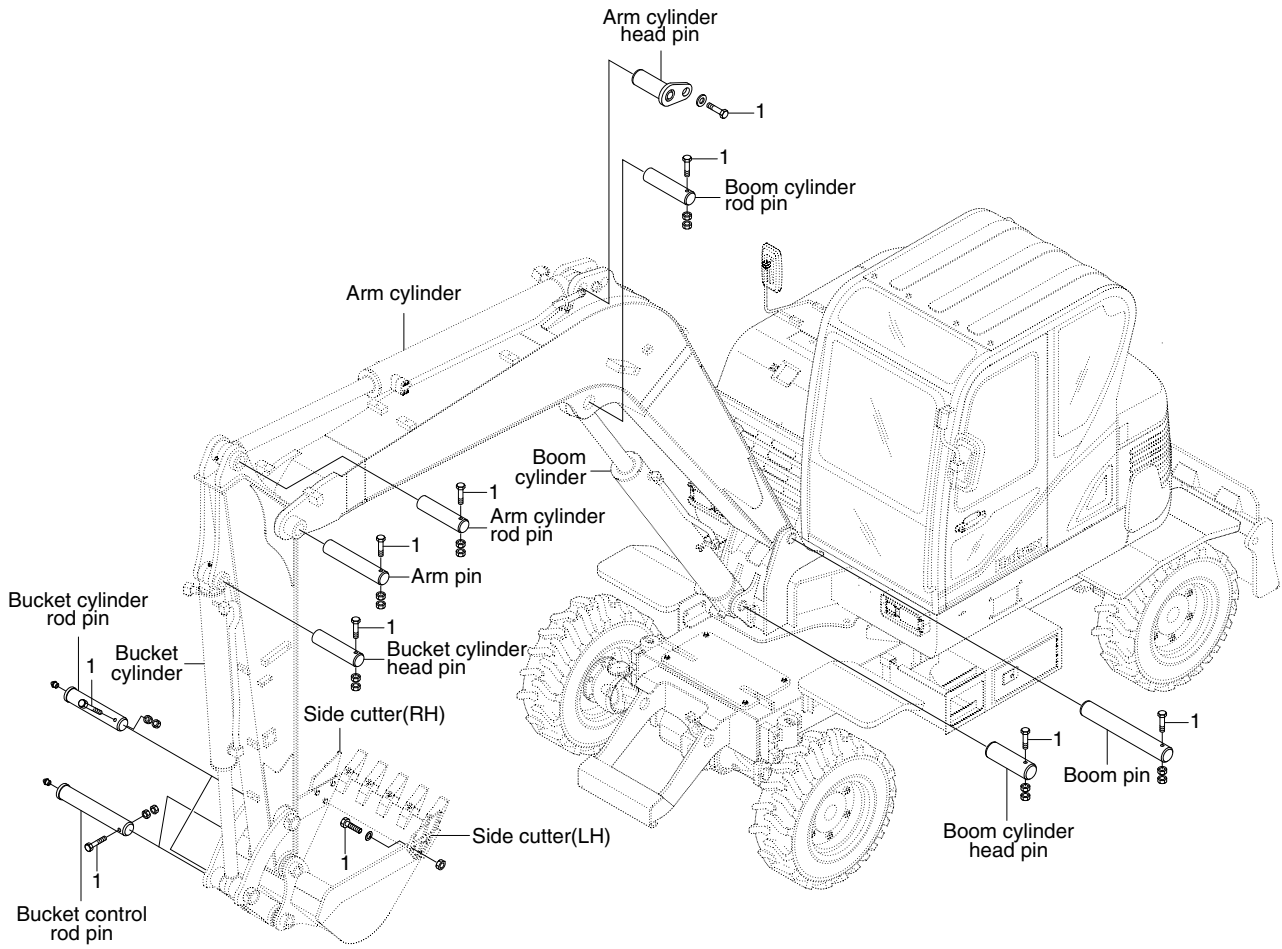
55W98CM06

·Tightening torque

Item	Size	kgf·m	lbf·ft
1	M 6×1.0	0.92±0.2	6.7±1.4
2	M 8×1.25	2.5±0.5	18.1±3.6

Item	Size	kgf·m	lbf·ft
1	M12×1.75	12.8±3.0	92.6±21.7
2	M16×2.0	29.6±3.2	214±23.1

GROUP 7 WORK EQUIPMENT



55W98CM11

·Tightening torque

Item	Size	kgf·m	lbf·ft
1	M12×1.75	12.8±3.0	92.6±21.7

Item	Size	kgf·m	lbf·ft
2	M16×2.0	29.7±4.5	215±32.5