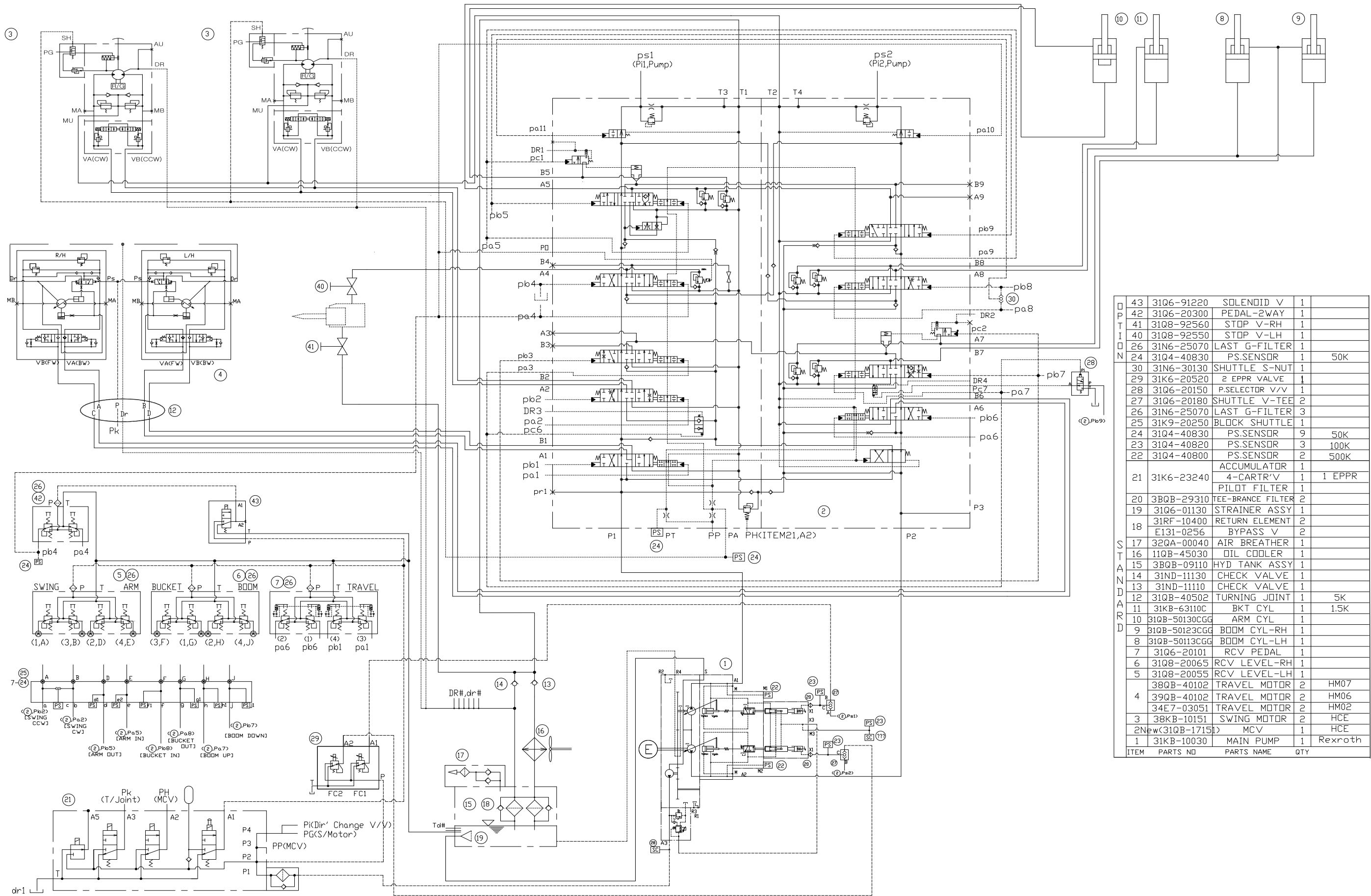


SECTION 3 HYDRAULIC SYSTEM

Group 1 Hydraulic Circuit	3-1
---------------------------------	-----

GROUP 1 HYDRAULIC CIRCUIT



ITEM	PARTS NO	PARTS NAME	QTY
43	31Q6-91220	SOLENOID V	1
42	31Q6-20300	PEDAL-2WAY	1
41	31Q8-92560	STOP V-RH	1
40	31Q8-92550	STOP V-LH	1
26	31N6-25070	LAST G-FILTER	1
24	31Q4-40830	PS.SENSOR	1 50K
30	31N6-30130	SHUTTLE S-NUT	1
29	31K6-20520	2 EPPR VALVE	1
28	31Q6-20150	P.SELECTOR V/V	1
27	31Q6-20180	SHUTTLE V-TEE	2
26	31N6-25070	LAST G-FILTER	3
25	31K9-20250	BLOCK SHUTTLE	1
24	31Q4-40830	PS.SENSOR	9 50K
24	31Q4-40820	PS.SENSOR	3 100K
22	31Q4-40800	PS.SENSOR	2 500K
21	31K6-23240	ACCUMULATOR 4-CARTR'V PILOT FILTER	1 1 EPPR
20	3BQB-29310	TEE-BRANCE FILTER	2
19	31Q6-01130	STRAINER ASSY	1
18	31RF-10400	RETURN ELEMENT	2
18	E131-0256	BYPASS V	2
17	32QA-00040	AIR BREATHER	1
16	11QB-45030	DIL COOLER	1
15	3BQB-09110	HYD TANK ASSY	1
14	31ND-11130	CHECK VALVE	1
13	31ND-11110	CHECK VALVE	1
12	31QB-40502	TURNING JOINT	1 5K
11	31KB-63110C	BKT CYL	1 1.5K
10	31QB-50130CGG	ARM CYL	1
9	31QB-50123CGG	BOOM CYL-RH	1
8	31QB-50113CGG	BOOM CYL-LH	1
7	31Q6-20101	RCV PEDAL	1
6	31Q8-20065	RCV LEVEL-RH	1
5	31Q8-20055	RCV LEVEL-LH	1
4	38QB-40102	TRAVEL MOTOR	2 HM07
4	39QB-40102	TRAVEL MOTOR	2 HM06
4	34E7-03051	TRAVEL MOTOR	2 HM02
3	38KB-10151	SWING MOTOR	2 HCE
2	2Npw(31QB-17151)	MCV	1 HCE
1	31KB-10030	MAIN PUMP	1 Rexroth