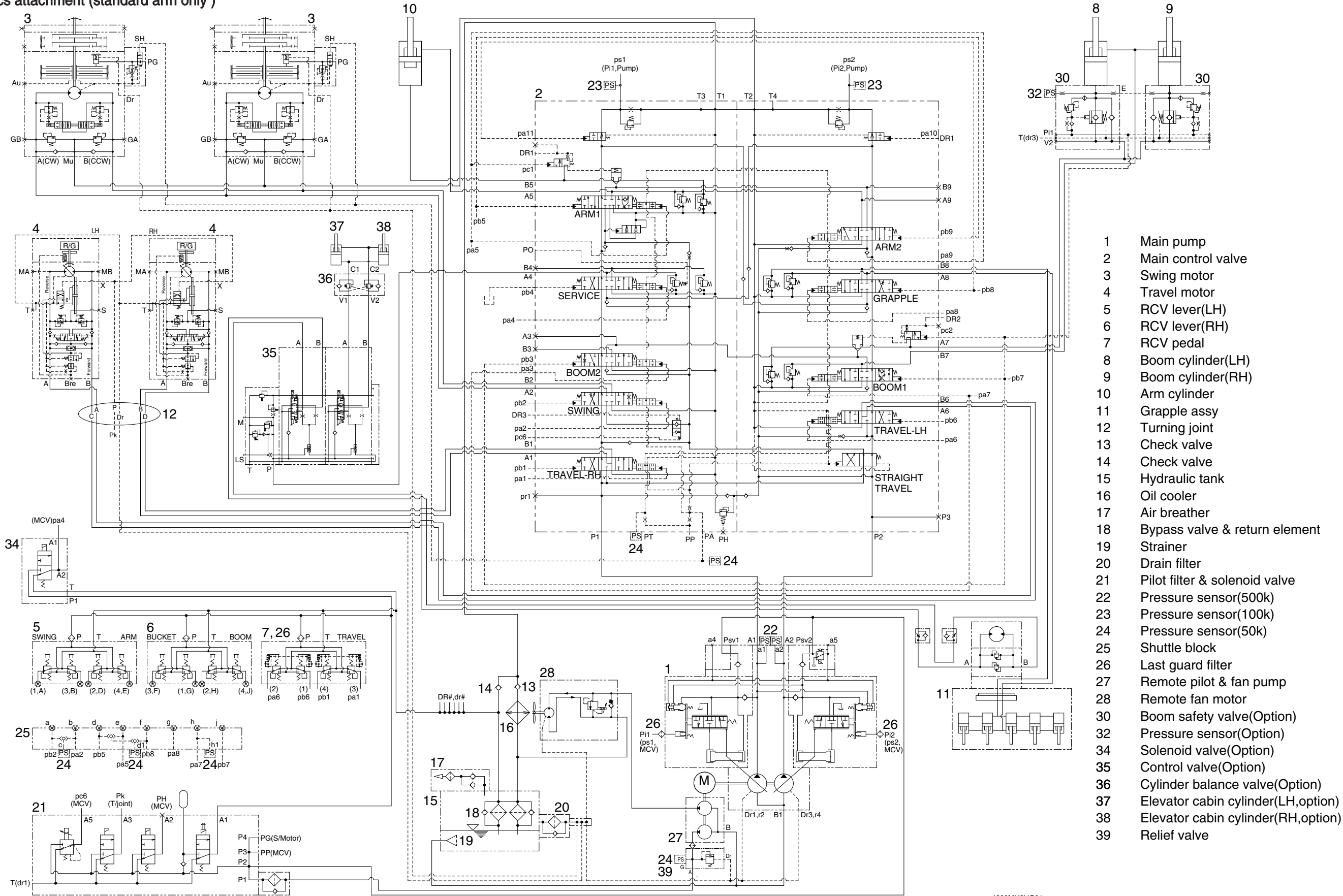


## SECTION 3 HYDRAULIC SYSTEM

Group 1 Hydraulic Circuit .....	3-1
Group 2 Main Circuit .....	3-2
Group 3 Pilot Circuit .....	3-5
Group 4 Single Operation .....	3-12
Group 5 Combined Operation .....	3-22

GROUP 1 HYDRAULIC CIRCUIT

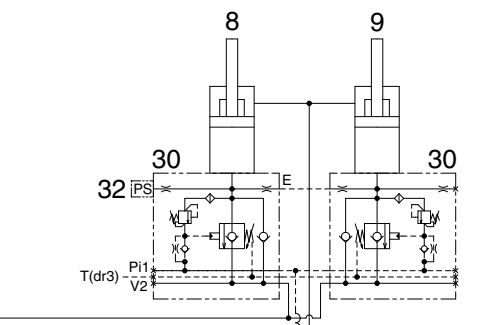
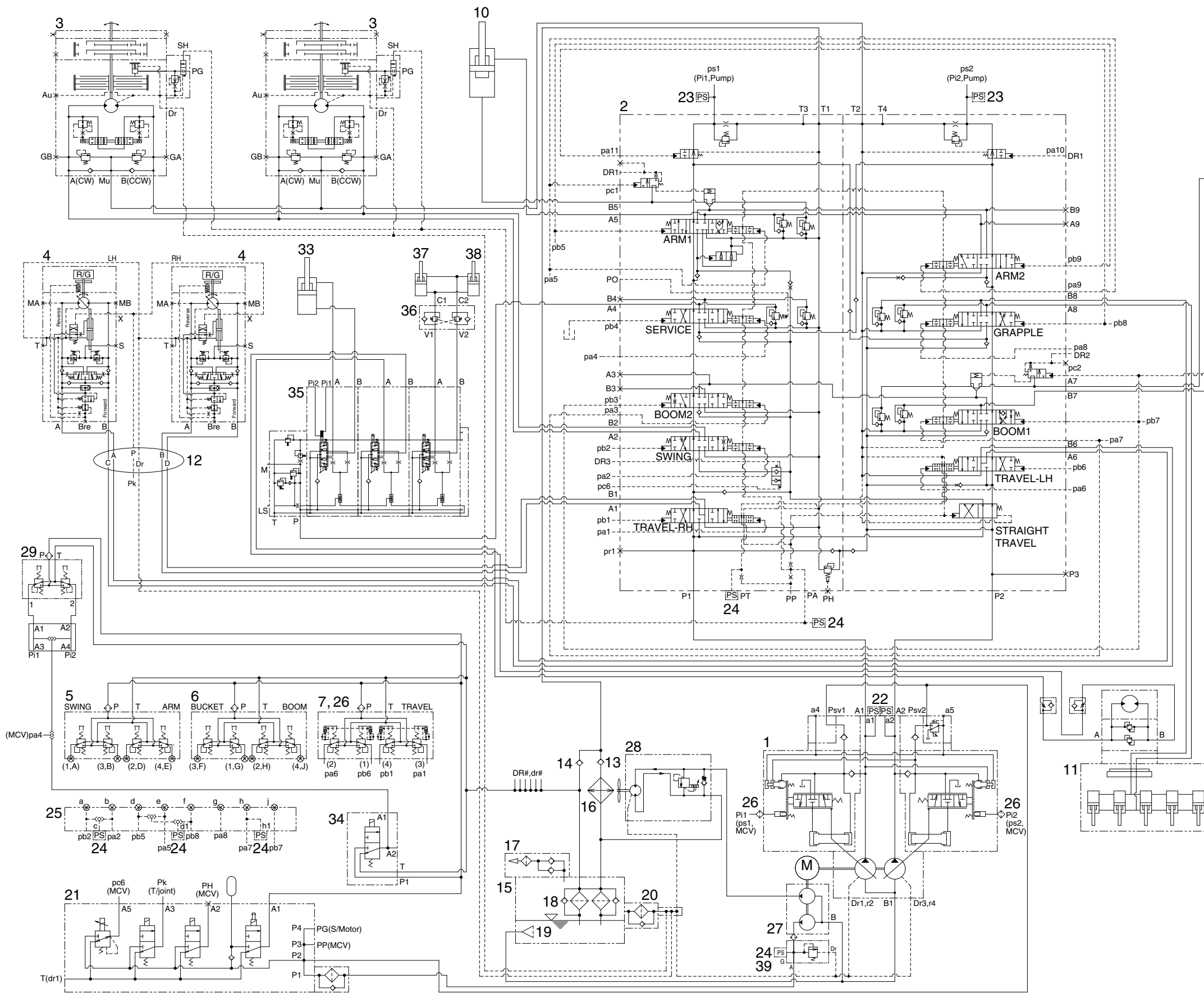
• 2 pcs attachment (standard arm only)



- 1 Main pump
- 2 Main control valve
- 3 Swing motor
- 4 Travel motor
- 5 RCV lever(LH)
- 6 RCV lever(RH)
- 7 RCV pedal
- 8 Boom cylinder(LH)
- 9 Boom cylinder(RH)
- 10 Arm cylinder
- 11 Grapple assy
- 12 Turning joint
- 13 Check valve
- 14 Check valve
- 15 Hydraulic tank
- 16 Oil cooler
- 17 Air breather
- 18 Bypass valve & return element
- 19 Strainer
- 20 Drain filter
- 21 Pilot filter & solenoid valve
- 22 Pressure sensor(500k)
- 23 Pressure sensor(100k)
- 24 Pressure sensor(50k)
- 25 Shuttle block
- 26 Last guard filter
- 27 Remote pilot & fan pump
- 28 Remote fan motor
- 30 Boom safety valve(Optional)
- 32 Pressure sensor(Optional)
- 34 Solenoid valve(Optional)
- 35 Control valve(Optional)
- 36 Cylinder balance valve(Optional)
- 37 Elevator cabin cylinder(LH,option)
- 38 Elevator cabin cylinder(RH,option)
- 39 Relief valve

4809MH3HC01

• 3 pcs attachment (option, middle arm + end arm)



- 1 Main pump
- 2 Main control valve
- 3 Swing motor
- 4 Travel motor
- 5 RCV lever(LH)
- 6 RCV lever(RH)
- 7 RCV pedal
- 8 Boom cylinder(LH)
- 9 Boom cylinder(RH)
- 10 End arm cylinder
- 11 Grapple assy
- 12 Turning joint
- 13 Check valve
- 14 Check valve
- 15 Hydraulic tank
- 16 Oil cooler
- 17 Air breather
- 18 Bypass valve & return element
- 19 Strainer
- 20 Drain filter
- 21 Pilot filter & solenoid valve
- 22 Pressure sensor(500k)
- 23 Pressure sensor(100k)
- 24 Pressure sensor(50k)
- 25 Shuttle block
- 26 Last guard filter
- 27 Remote pilot & fan pump
- 28 Remote fan motor
- 29 Double acting padal
- 30 Boom safety valve(Optional)
- 31 Boom safety valve(Optional)
- 32 Pressure sensor(Optional)
- 33 Middle arm cylinder
- 34 Solenoid valve(Optional)
- 35 Control valve(Optional)
- 36 Cylinder balance valve(Optional)
- 37 Elevator cabin cylinder(LH,option)
- 38 Elevator cabin cylinder(RH,option)
- 39 Relief valve