

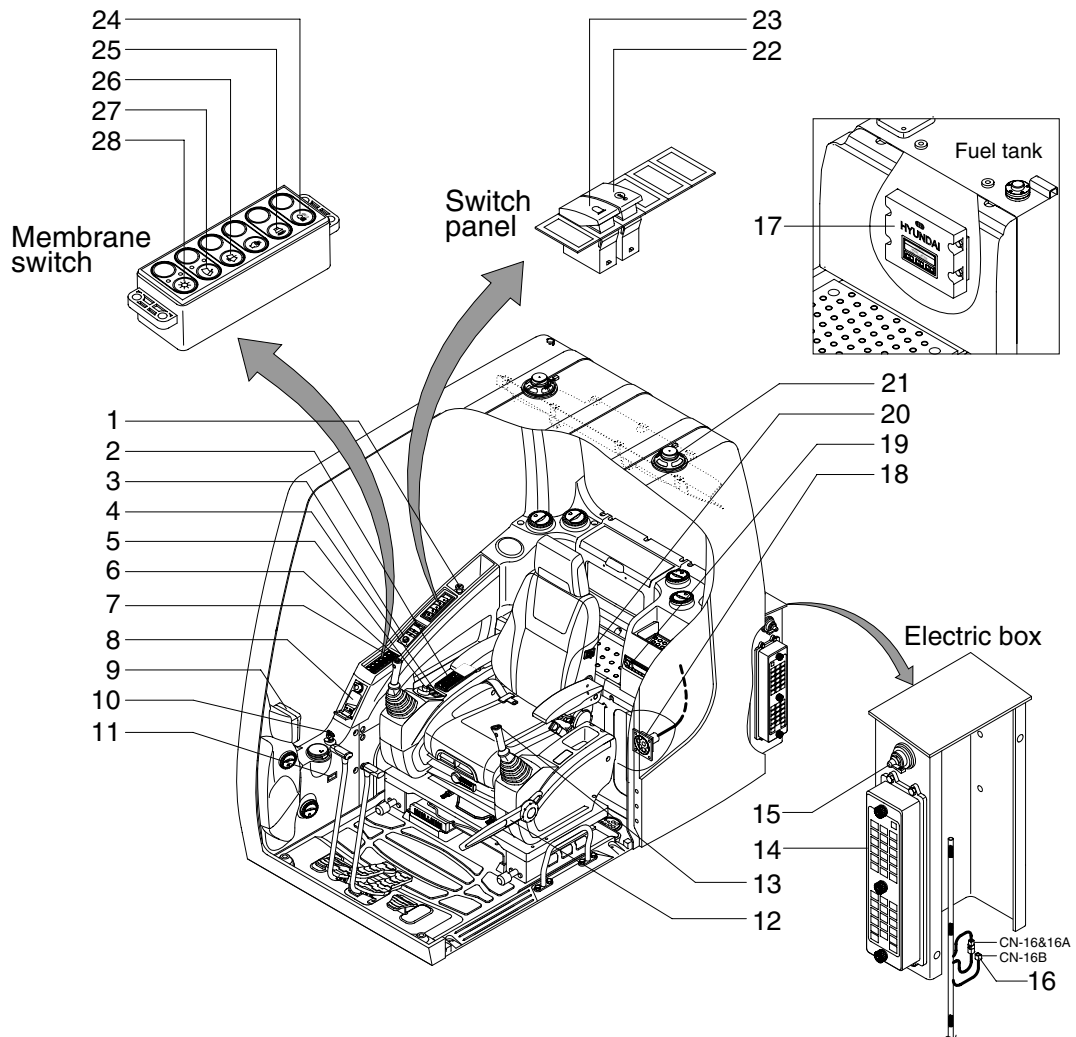
SECTION 4 ELECTRICAL SYSTEM

Group 1 Component Location	4-1
Group 2 Electrical Circuit	4-3
Group 3 Electrical Component Specification	4-21
Group 4 Connectors	4-29

SECTION 4 ELECTRICAL SYSTEM

GROUP 1 COMPONENT LOCATION

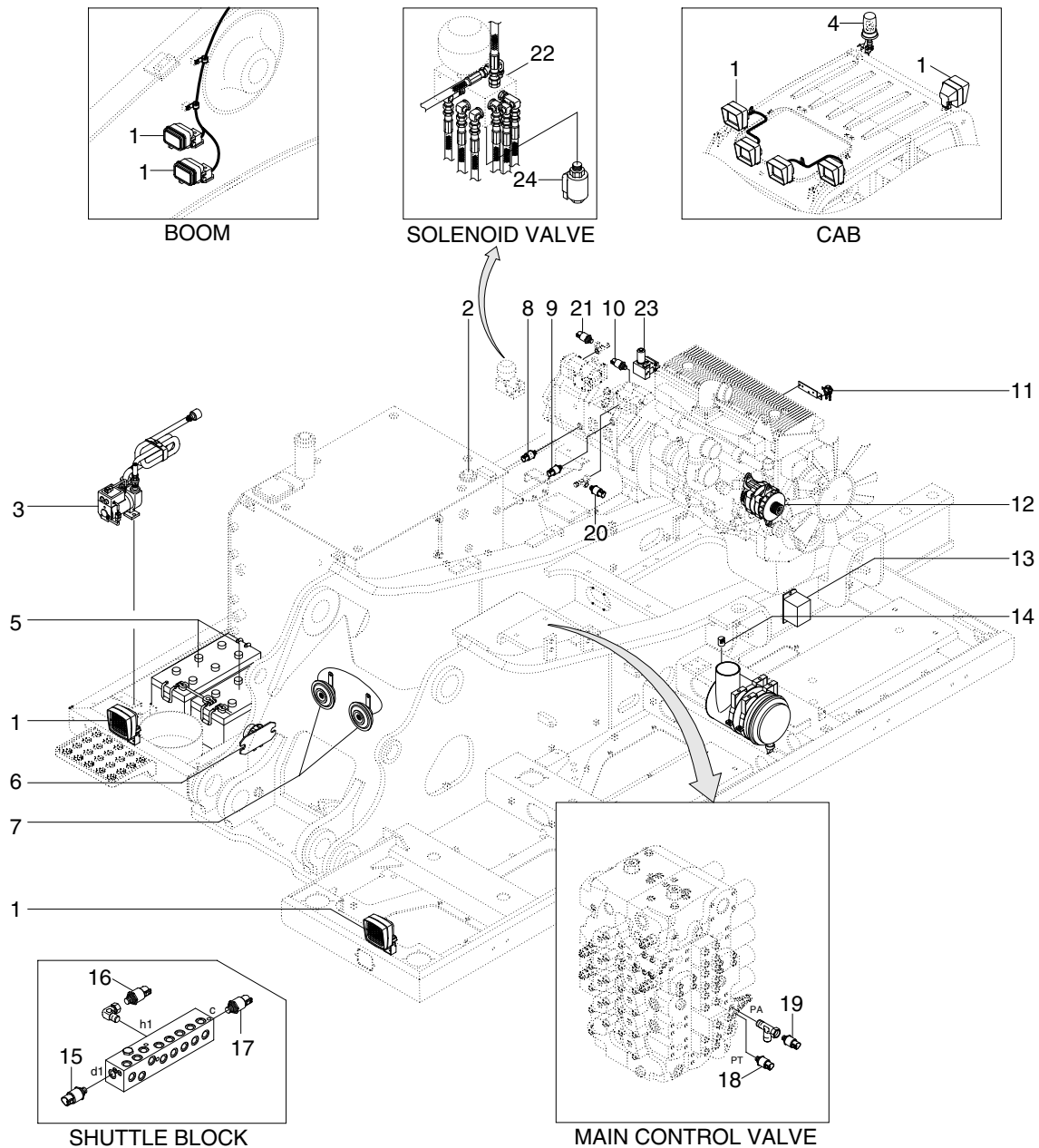
1. LOCATION 1



4809MH4EL01

- | | | |
|--------------------------------|---------------------------------|------------------------|
| 1 Cigar light | 11 Service meter | 21 Speaker |
| 2 Aircon & heater switch panel | 12 Safety lever | 22 Overload switch |
| 3 Remote controller | 13 One touch decel switch | 23 Beacon switch |
| 4 Air compressor switch | 14 Fuse box | 24 Cab light switch |
| 5 Accel dial switch | 15 Master switch | 25 Travel alarm switch |
| 6 Horn switch | 16 Emergency engine connector | 26 Washer switch |
| 7 Grapple rotation switch | 17 MCU | 27 Wiper switch |
| 8 Handsfree | 18 RS232 & J1939 service socket | 28 Main light switch |
| 9 Cluster | 19 Radio & USB player | |
| 10 Starting switch | 20 Heated seat switch | |

2. LOCATION 2



4809MH4EL02

- | | | | | | |
|---|--------------------|----|------------------------------|----|--------------------------------|
| 1 | Lamp | 9 | P2 pressure sensor | 17 | Swing pressure sensor |
| 2 | Fuel sender | 10 | EPPR pressure sensor | 18 | Travel pressure sensor |
| 3 | Fuel filler pump | 11 | Heater relay | 19 | Attach pressure sensor |
| 4 | Beacon lamp | 12 | Alternator | 20 | Nega control 1 pressure sensor |
| 5 | Battery | 13 | Travel alarm buzzer | 21 | Nega control 2 pressure sensor |
| 6 | Battery relay | 14 | Air cleaner switch | 22 | Solenoid valve |
| 7 | Horn | 15 | Arm in / out pressure sensor | 23 | Pump EPPR valve |
| 8 | P1 pressure sensor | 16 | Boom up pressure sensor | 24 | Boom priority EPPR valve |