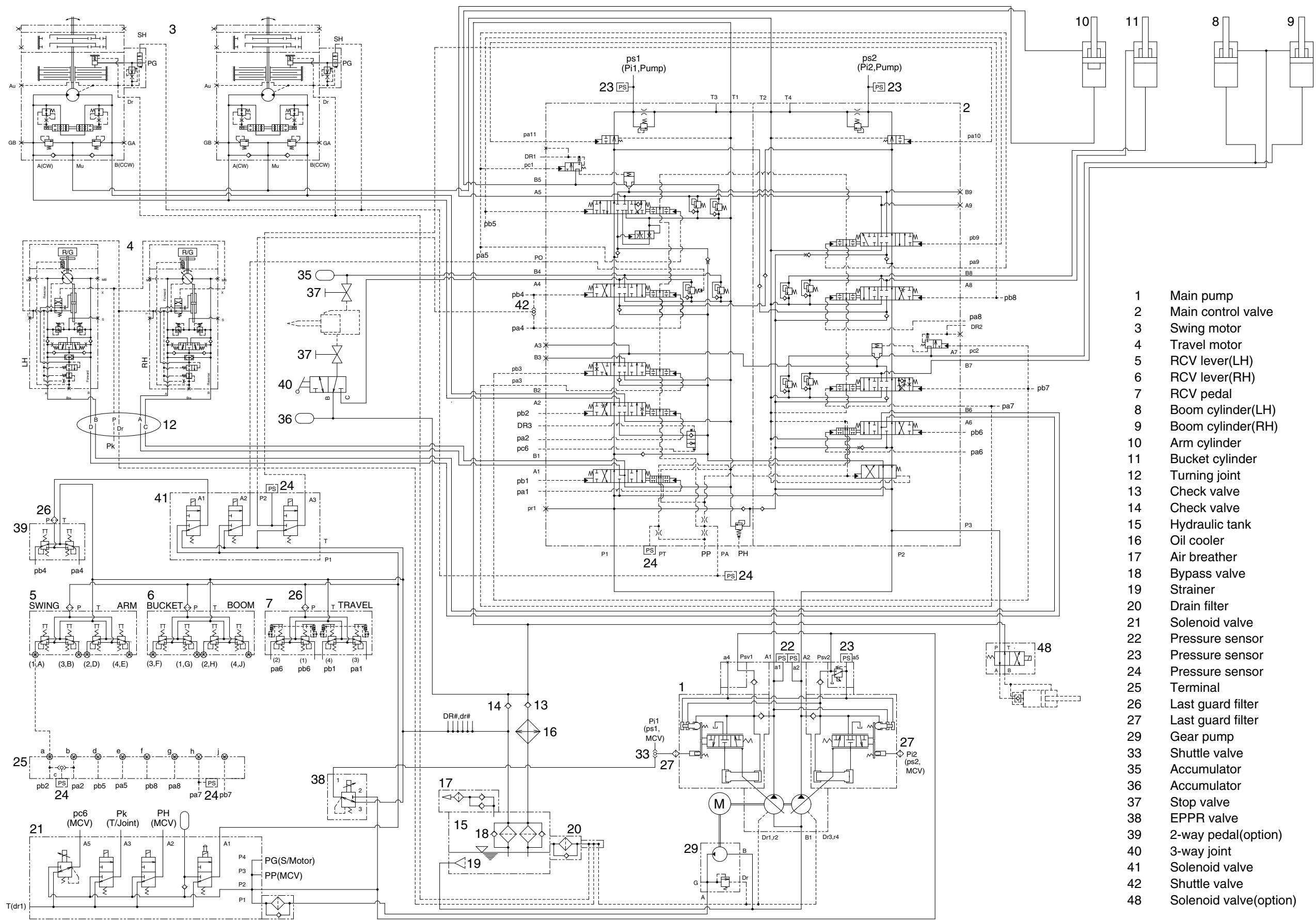


SECTION 3 HYDRAULIC SYSTEM

Group 1 Hydraulic Circuit	3-1
Group 2 Main Circuit	3-3
Group 3 Pilot Circuit	3-6
Group 4 Single Operation	3-13
Group 5 Combined Operation	3-23

SECTION 3 HYDRAULIC SYSTEM

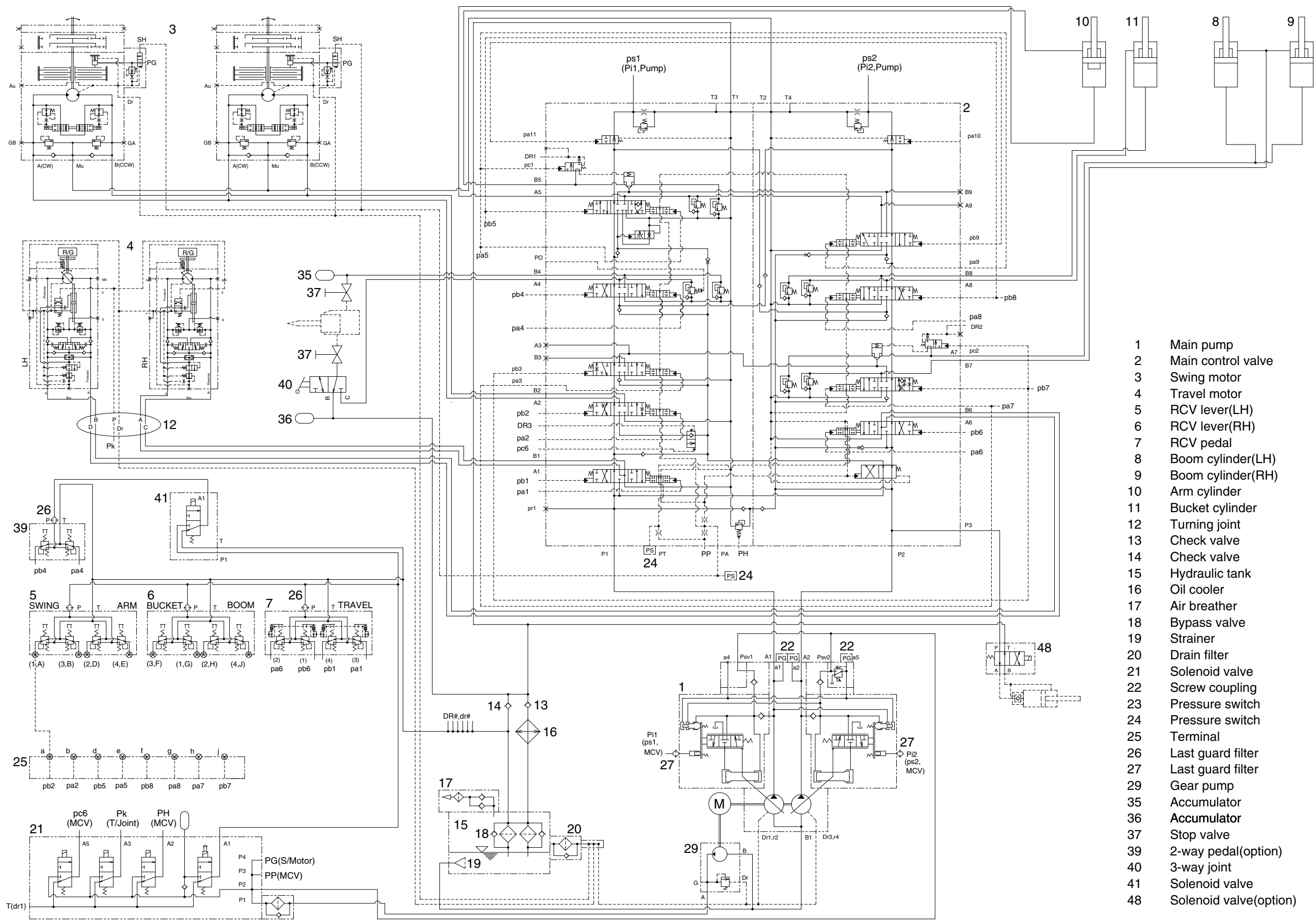
GROUP 1 HYDRAULIC CIRCUIT (CLUSTER TYPE 1, OLD)



- 1 Main pump
- 2 Main control valve
- 3 Swing motor
- 4 Travel motor
- 5 RCV lever(LH)
- 6 RCV lever(RH)
- 7 RCV pedal
- 8 Boom cylinder(LH)
- 9 Boom cylinder(RH)
- 10 Arm cylinder
- 11 Bucket cylinder
- 12 Turning joint
- 13 Check valve
- 14 Check valve
- 15 Hydraulic tank
- 16 Oil cooler
- 17 Air breather
- 18 Bypass valve
- 19 Strainer
- 20 Drain filter
- 21 Solenoid valve
- 22 Pressure sensor
- 23 Pressure sensor
- 24 Pressure sensor
- 25 Terminal
- 26 Last guard filter
- 27 Last guard filter
- 29 Gear pump
- 33 Shuttle valve
- 35 Accumulator
- 36 Accumulator
- 37 Stop valve
- 38 EPPR valve
- 39 2-way pedal(option)
- 40 3-way joint
- 41 Solenoid valve
- 42 Shuttle valve
- 48 Solenoid valve(option)

4809S3HC01P

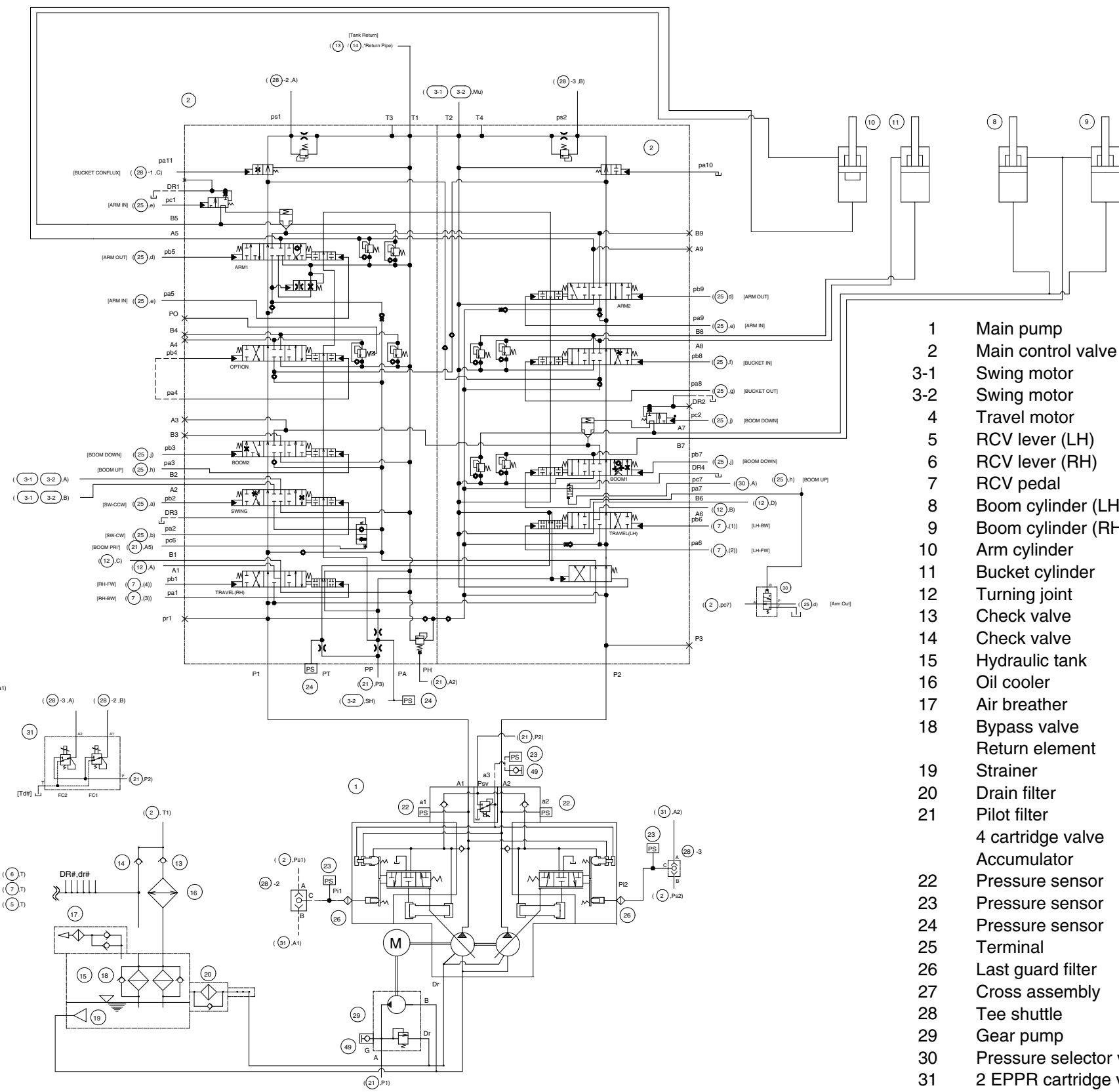
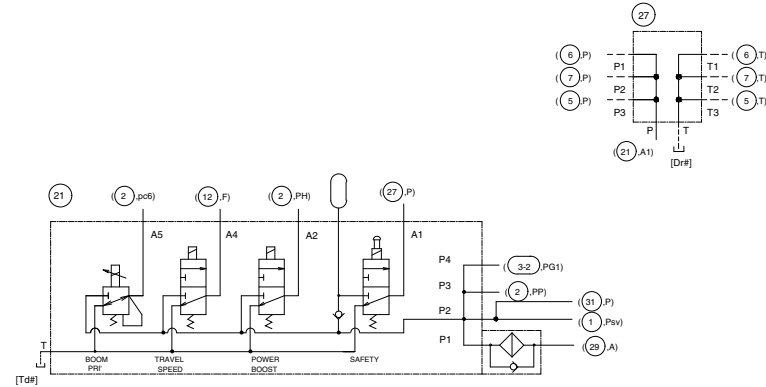
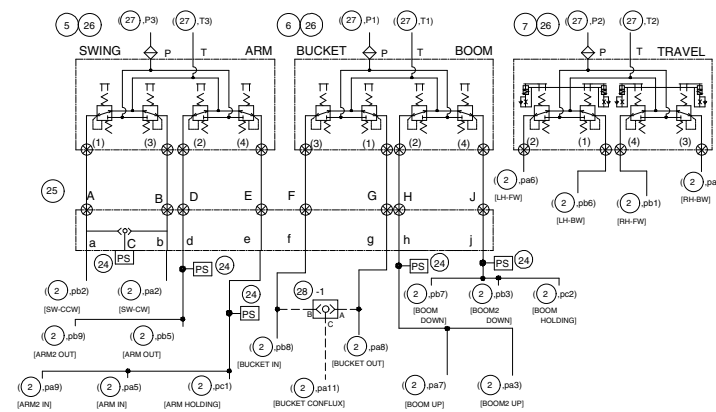
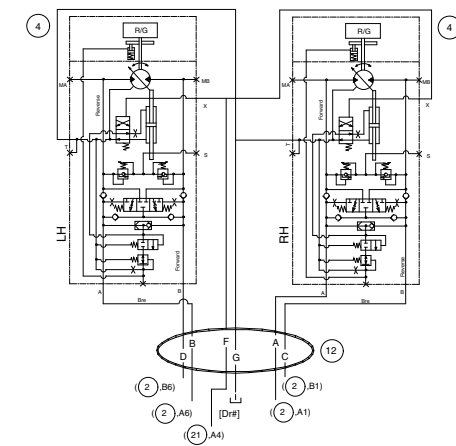
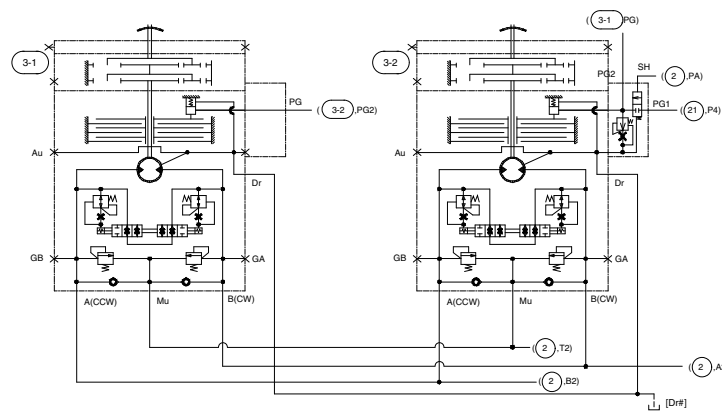
HYDRAULIC CIRCUIT (CLUSTER TYPE 2, OLD)



- 1 Main pump
- 2 Main control valve
- 3 Swing motor
- 4 Travel motor
- 5 RCV lever(LH)
- 6 RCV lever(RH)
- 7 RCV pedal
- 8 Boom cylinder(LH)
- 9 Boom cylinder(RH)
- 10 Arm cylinder
- 11 Bucket cylinder
- 12 Turning joint
- 13 Check valve
- 14 Check valve
- 15 Hydraulic tank
- 16 Oil cooler
- 17 Air breather
- 18 Bypass valve
- 19 Strainer
- 20 Drain filter
- 21 Solenoid valve
- 22 Screw coupling
- 23 Pressure switch
- 24 Pressure switch
- 25 Terminal
- 26 Last guard filter
- 27 Last guard filter
- 29 Gear pump
- 35 Accumulator
- 36 Accumulator
- 37 Stop valve
- 39 2-way pedal(option)
- 40 3-way joint
- 41 Solenoid valve
- 48 Solenoid valve(option)

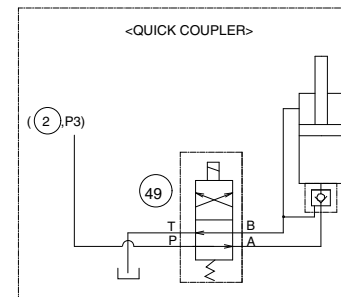
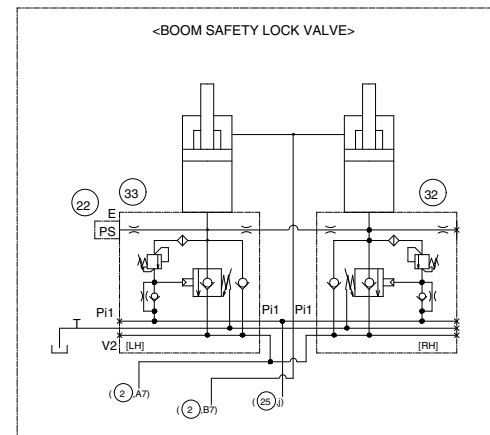
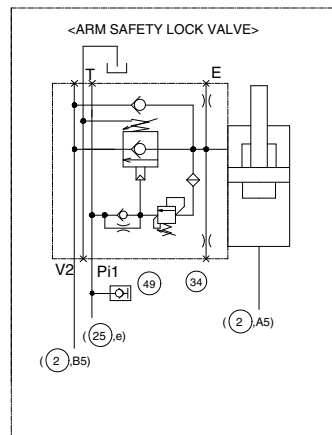
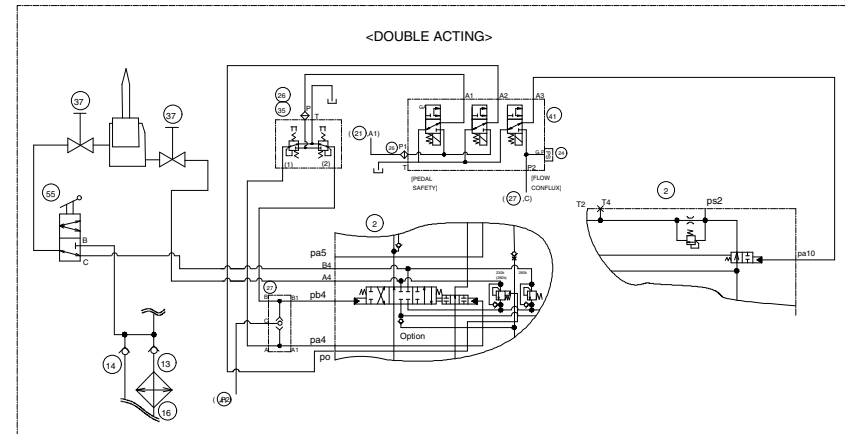
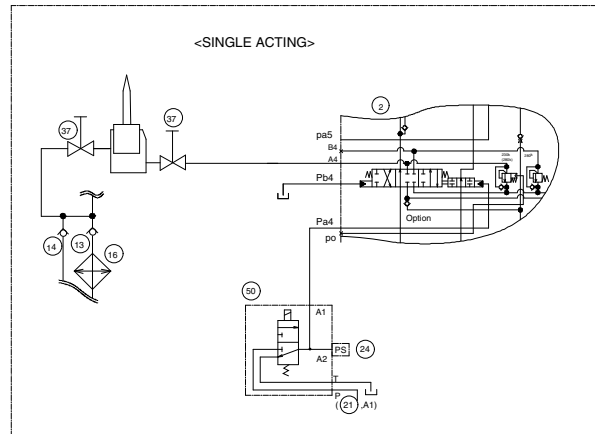
4809S3HC01S

HYDRAULIC CIRCUIT (NEW 1/2)



- 1 Main pump
- 2 Main control valve
- 3-1 Swing motor
- 3-2 Swing motor
- 4 Travel motor
- 5 RCV lever (LH)
- 6 RCV lever (RH)
- 7 RCV pedal
- 8 Boom cylinder (LH)
- 9 Boom cylinder (RH)
- 10 Arm cylinder
- 11 Bucket cylinder
- 12 Turning joint
- 13 Check valve
- 14 Check valve
- 15 Hydraulic tank
- 16 Oil cooler
- 17 Air breather
- 18 Bypass valve
- 19 Return element
- 20 Strainer
- 21 Drain filter
- 22 Pilot filter
- 4 cartridge valve
- Accumulator
- 22 Pressure sensor
- 23 Pressure sensor
- 24 Pressure sensor
- 25 Terminal
- 26 Last guard filter
- 27 Cross assembly
- 28 Tee shuttle
- 29 Gear pump
- 30 Pressure selector valve
- 31 2 EPPR cartridge valve
- 31 Screw coupling

■ HYDRAULIC CIRCUIT (NEW 2/2)



- 22 Pressure sensor
- 24 Pressure sensor
- 26 Last guard filter
- 27 5 shuttle valve
- 32 Safety valve (RH)
- 33 Safety valve (LH)
- 34 Safety valve
- 35 2 way pedal (opt)
- 37 Stop valve
- 41 Solenoid valve
- 49 Solenoid valve
- 55 3 way joint