

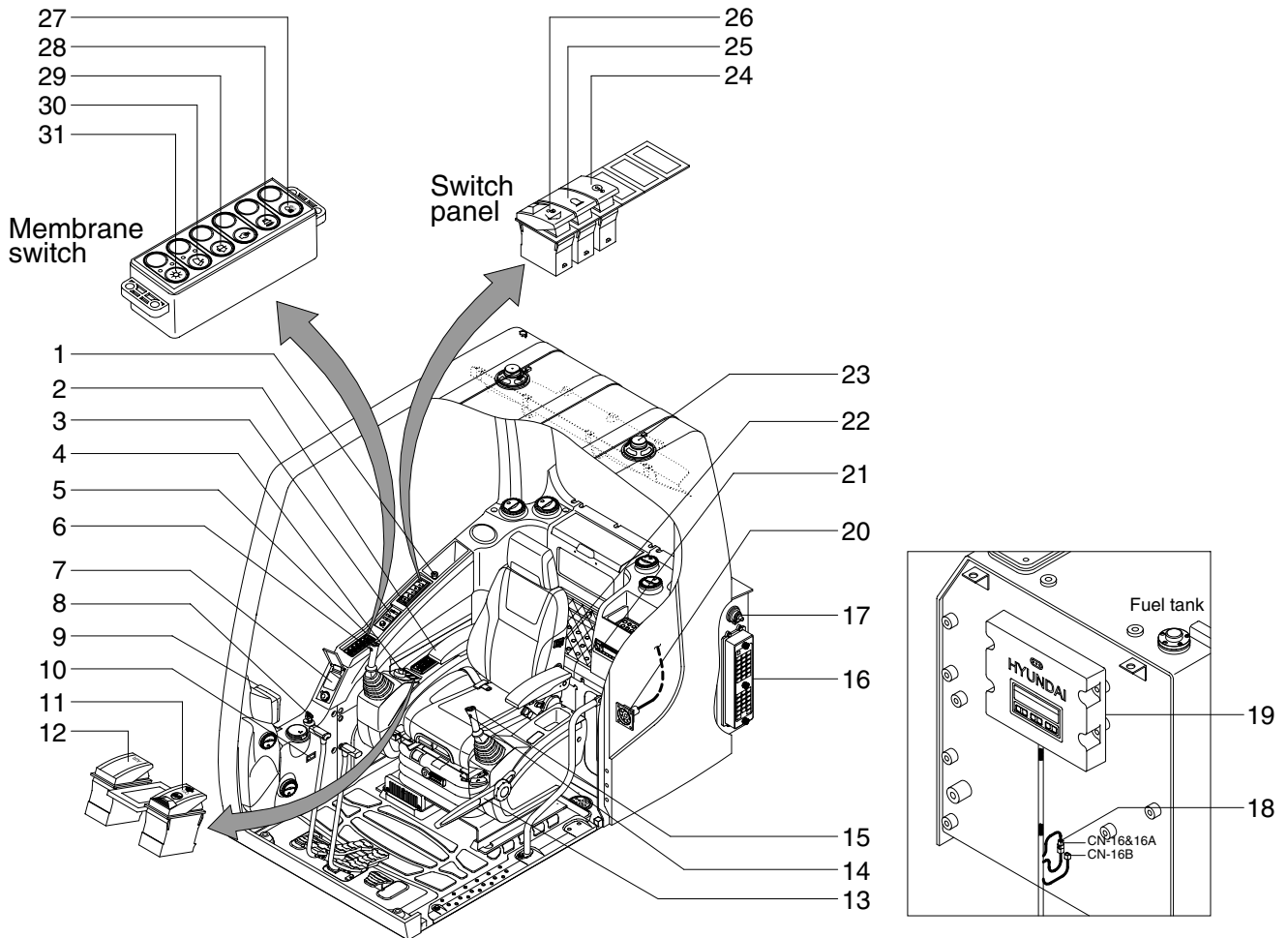
## SECTION 4 ELECTRICAL SYSTEM

Group 1 Component Location .....	4-1
Group 2 Electrical Circuit .....	4-3
Group 3 Electrical Component Specification .....	4-21
Group 4 Connectors .....	4-29

# SECTION 4 ELECTRICAL SYSTEM

## GROUP 1 COMPONENT LOCATION

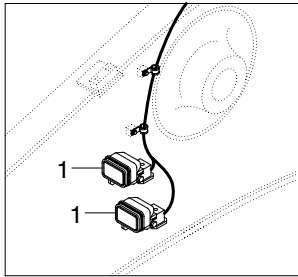
### 1. LOCATION 1



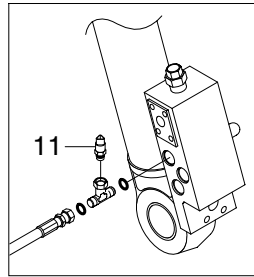
4809A4EL01

- |                                |                                 |                        |
|--------------------------------|---------------------------------|------------------------|
| 1 Cigar light                  | 12 Air compressor switch        | 23 Speaker             |
| 2 Aircon & heater switch panel | 13 Safety lever                 | 24 Overload switch     |
| 3 Remote controller            | 14 Power max switch             | 25 Beacon switch       |
| 4 Accel dial switch            | 15 One touch decel switch       | 26 Quick clamp switch  |
| 5 Horn switch                  | 16 Fuse box                     | 27 Cab light switch    |
| 6 Breaker operation switch     | 17 Master switch                | 28 Travel alarm switch |
| 7 Handsfree                    | 18 Emergency engine connector   | 29 Washer switch       |
| 8 Starting switch              | 19 MCU                          | 30 Wiper switch        |
| 9 Cluster                      | 20 RS232 & J1939 service socket | 31 Main light switch   |
| 10 Service meter               | 21 Radio & USB player           |                        |
| 11 DPF switch                  | 22 Heated seat switch           |                        |

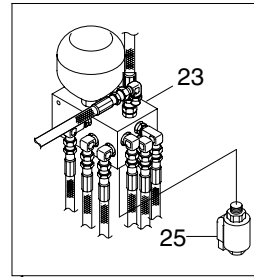
## 2. LOCATION 2



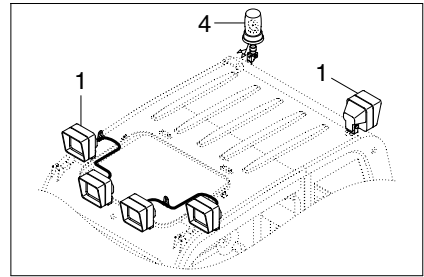
BOOM



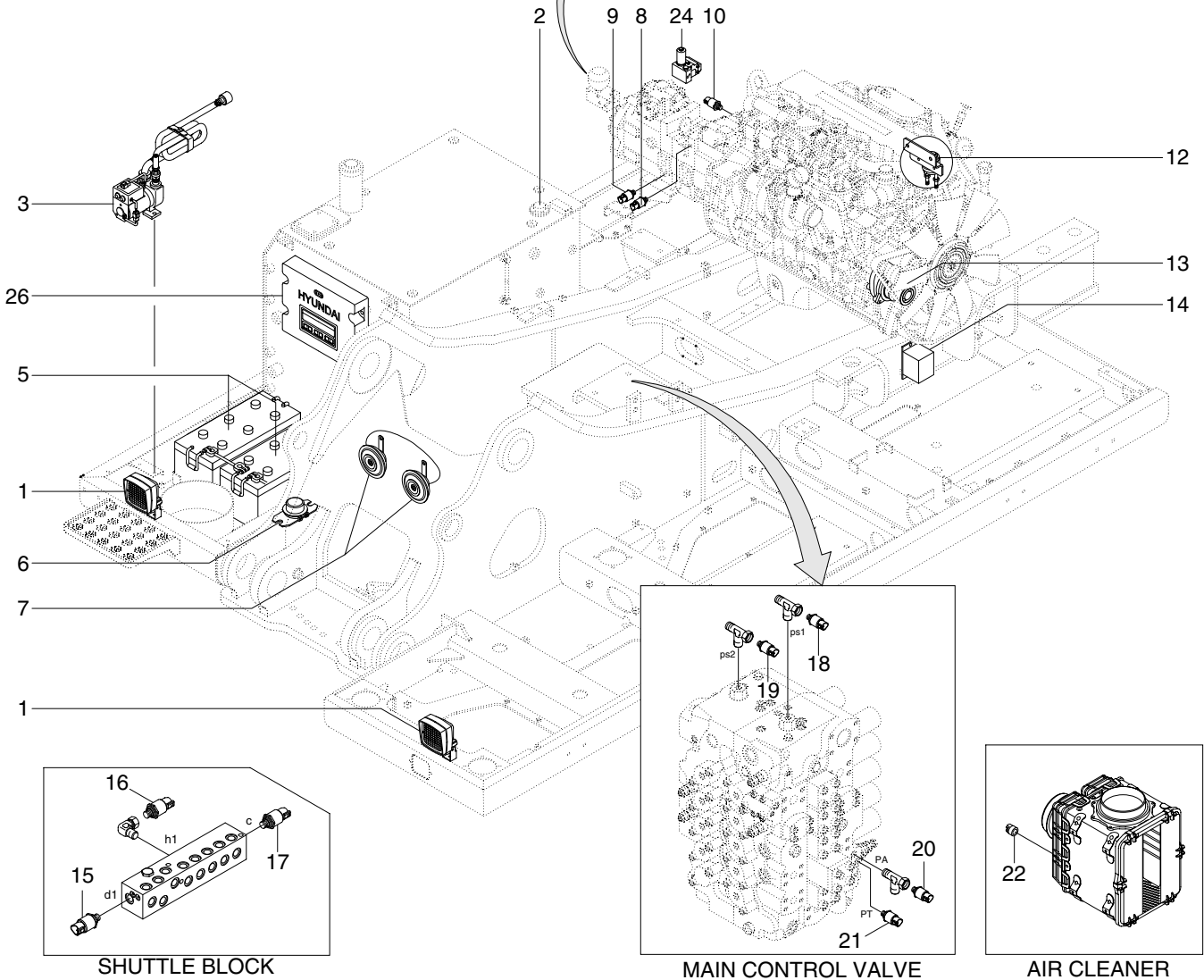
BOOM SAFETY VALVE



SOLENOID VALVE



CAB



SHUTTLE BLOCK

MAIN CONTROL VALVE

AIR CLEANER

4809A4EL02

- |                      |                                   |                                   |
|----------------------|-----------------------------------|-----------------------------------|
| 1 Lamp               | 10 EPPR pressure sensor           | 19 Nega control 2 pressure sensor |
| 2 Fuel sender        | 11 Overload pressure sensor       | 20 Attach pressure sensor         |
| 3 Fuel filler pump   | 12 Heater relay                   | 21 Travel pressure sensor         |
| 4 Beacon lamp        | 13 Alternator                     | 22 Air cleaner switch             |
| 5 Battery            | 14 Travel alarm buzzer            | 23 Solenoid valve                 |
| 6 Battery relay      | 15 Arm/Bucket in pressure sensor  | 24 Pump EPPR valve                |
| 7 Horn               | 16 Boom up pressure sensor        | 25 Boom priority EPPR valve       |
| 8 P1 pressure sensor | 17 Swing pressure sensor          | 26 MCU                            |
| 9 P2 pressure sensor | 18 Nega control 1 pressure sensor |                                   |