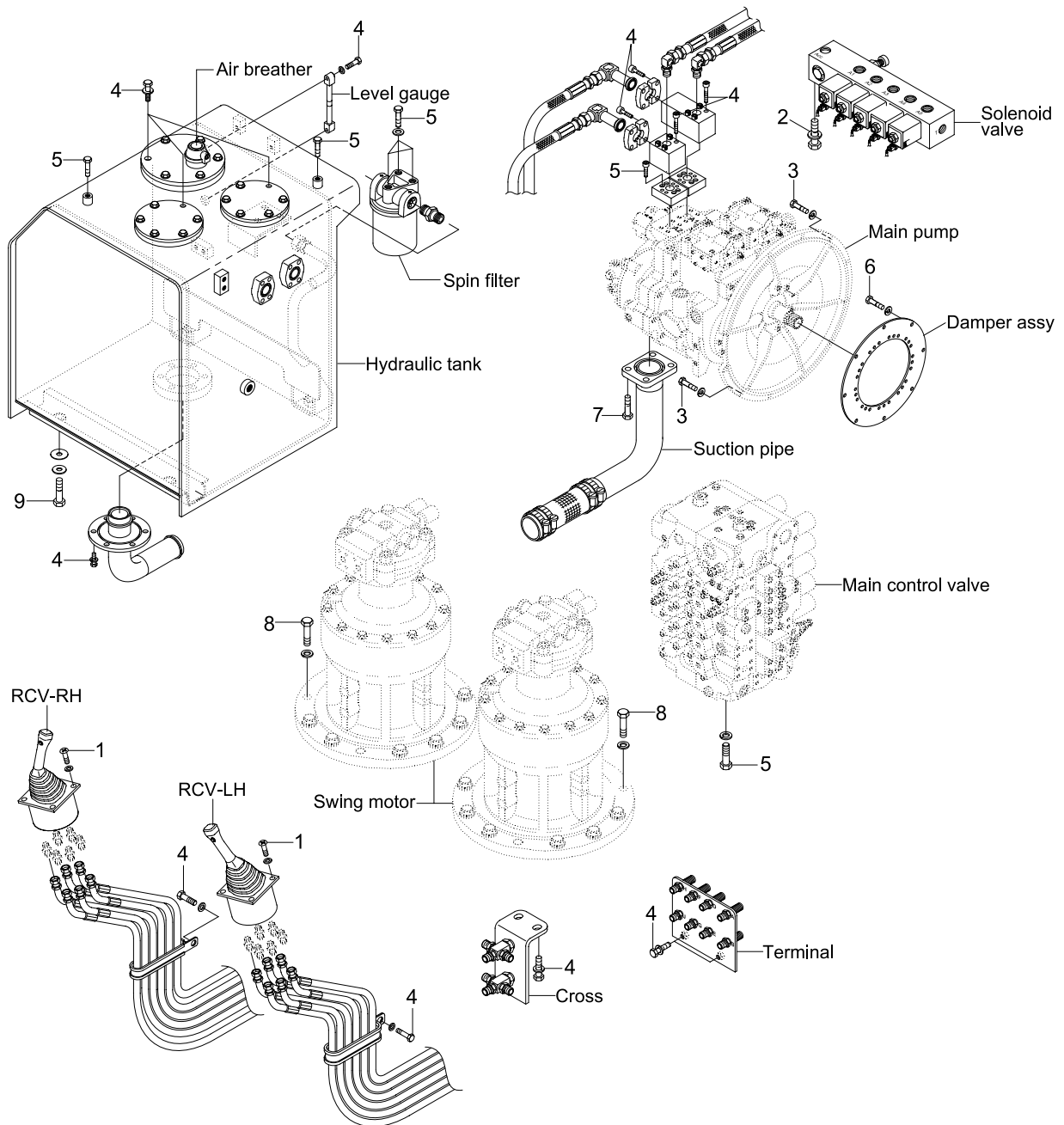


GROUP 4 HYDRAULIC SYSTEM(~#0463)

HYDRAULIC COMPONENTS MOUNTING 1



45079CM05

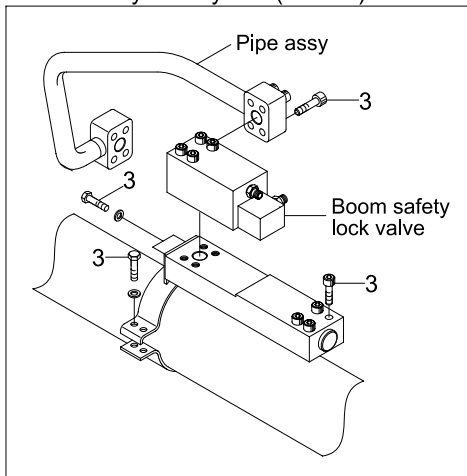
· Tightening torque

Item	Size	kgf · m	lbf · ft
1	M 6×1.0	1.05±0.2	7.6±1.45
2	M 8×1.25	2.5±0.5	18.1±3.6
3	M10×1.5	4.8±0.3	34.7±2.2
4	M10×1.5	6.9±1.4	49.9±10.1
5	M12×1.75	12.2±1.3	88.2±9.4

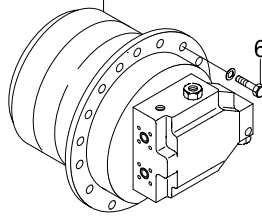
Item	Size	kgf · m	lbf · ft
6	3/8-16UNC	4.6±0.3	33.3±2.2
7	M16×2.0	29.7±4.4	126±31.8
8	M20×2.5	58.4±6.4	422±46.3
9	M20×2.5	45±5.1	326±36.9
-	-	-	-

HYDRAULIC COMPONENTS MOUNTING 2

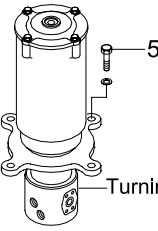
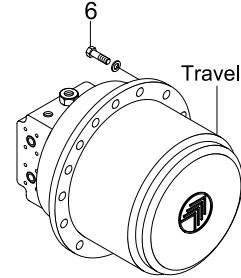
Boom safety lock system(-#0011)



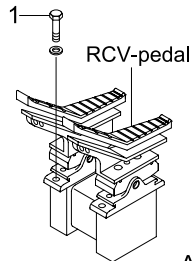
Travel motor(RH)



Travel motor(LH)

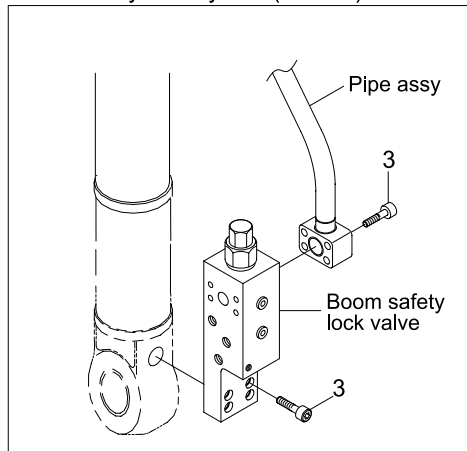


Turning joint

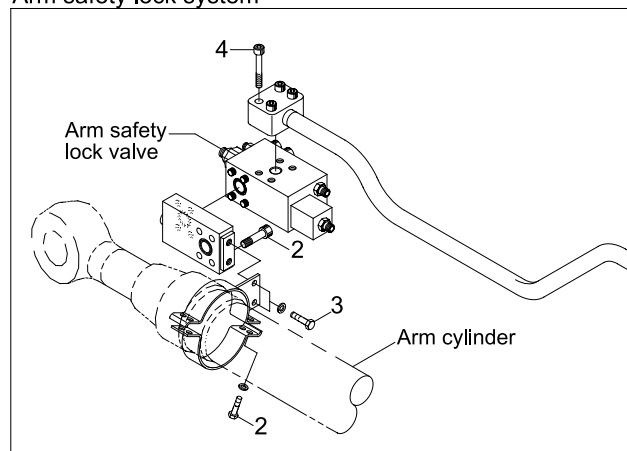


RCV-pedal

Boom safety lock system(#0012-)



Arm safety lock system



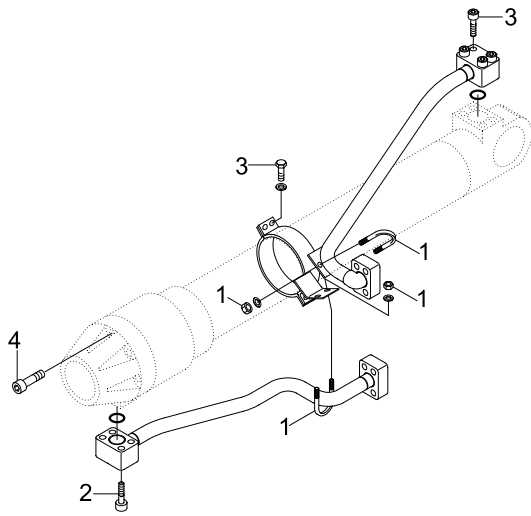
45079CM06

· Tightening torque

Item	Size	kgf · m	lbf · ft
1	M10×1.5	6.9±1.4	49.9±10.1
2	M10×1.5	5.4±0.5	39.1±3.6
3	M12×1.75	12.8±3.0	92.6±21.7

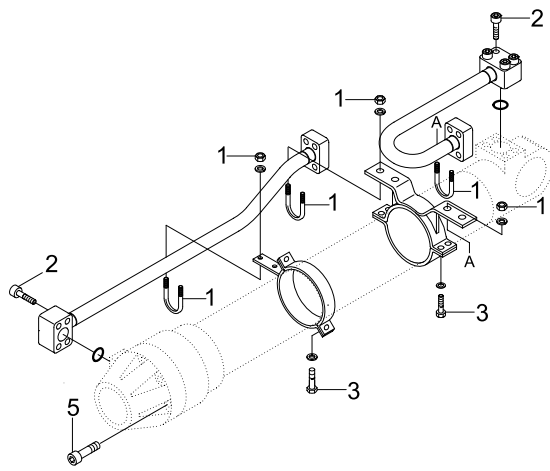
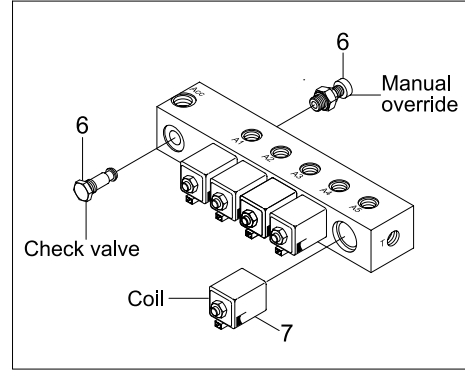
Item	Size	kgf · m	lbf · ft
4	M14×2.0	19.6±2.9	141.8±21
5	M16×2.0	29.7±4.5	215±32.5
6	M20×2.5	57.9±8.7	431.8±18.1

HYDRAULIC COMPONENTS MOUNTING 3

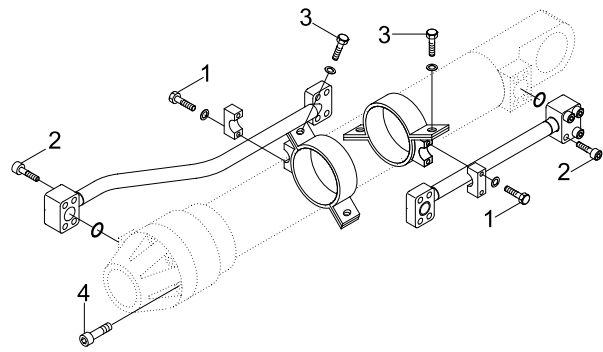


BOOM CYLINDER

Solenoid valve



ARM CYLINDER



BUCKET CYLINDER

45079CM07

· Tightening torque

Item	Size	kgf · m	lbf · ft
1	M10×1.5	3.2±0.3	23.1±2.2
2	M10×1.5	5.4±0.5	39.1±3.6
3	M12×1.75	5.5±0.6	39.8±4.3
4	M24×3.0	79±8.0	571±57.9

Item	Size	kgf · m	lbf · ft
5	M30×3.5	157±16	1135.6±116
6	M22×2.5	4.1	29.6
7	M27×3.0	5.1	36.9
-	-	-	-