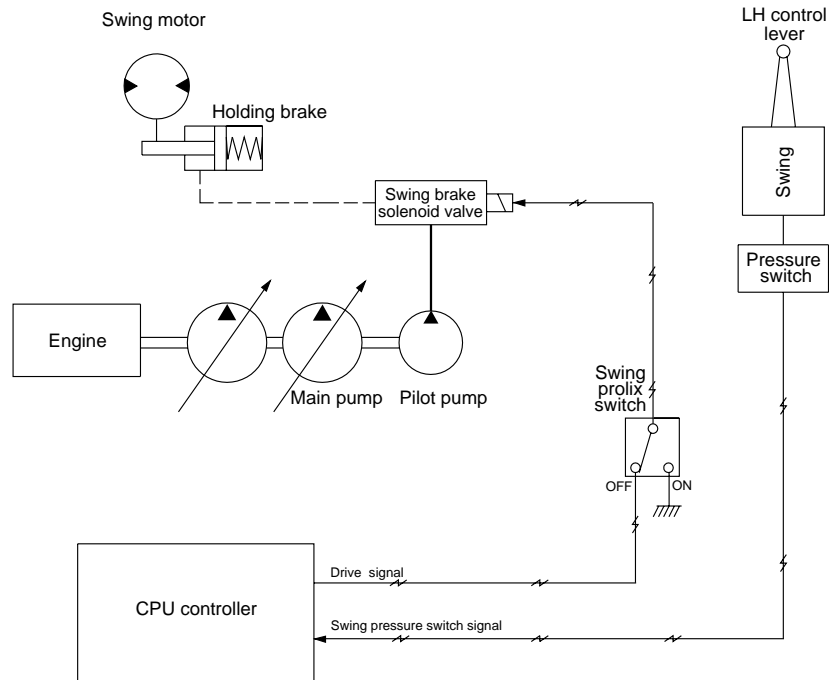


GROUP 7 SWING CONTROL SYSTEM



1. SWING HOLDING BRAKE FUNCTION

When the swing control lever is operated, swing brake release function is activated by energizing of swing brake solenoid valve to ensure the swing operation.

And when the swing control lever gets back to neutral position, the swing holding brake function activates after 6 seconds to prevent hydraulic drift after stopping the swing.

2. SWING PROLIX SWITCH

When the CPU controller is abnormal, the swing prolix switch cancels the swing brake and operates the swing.

Swing prolix switch	RCV lever	Function
OFF(Normal)	Operating	Swing
	Neutral	After 6sec, swing brake
ON(Abnormal)	Operating	Swing
	Neutral	Swing brake