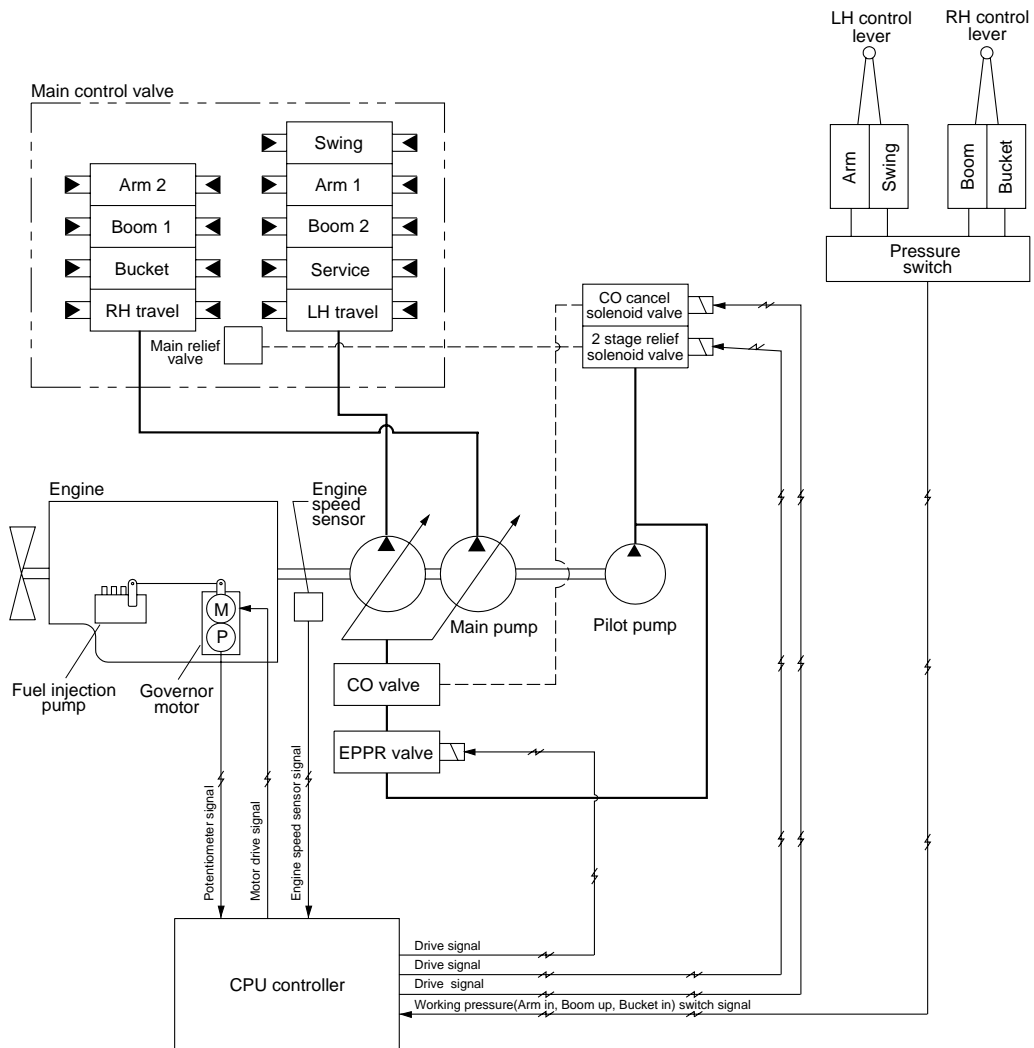


GROUP 5 POWER BOOST SYSTEM



- When the power boost switch on the left control lever knob is pushed ON, the maximum digging power is increased by 10%.
- When the power set is at H or S and the power boost function is activated, the 2-stage relief solenoid valve pilot pressure raises the set pressure of the main relief valve to increase the digging power. And the Cut-off cancel solenoid valve is also canceled to ensure the oil flow near the relief pressure.

	Power boost switch	
	OFF	ON
Power set	H or S	H
Main relief valve set pressure	325kg/cm ²	350kg/cm ²
Cut-off function	Activated	Canceled
Time of operation	-	Even when pressed continuously, it is canceled after 8 sec.

※ This function does not work when the power mode switch is at L or F.

※ Default — 2-stage relief solenoid : OFF
Cut-off cancel solenoid : OFF