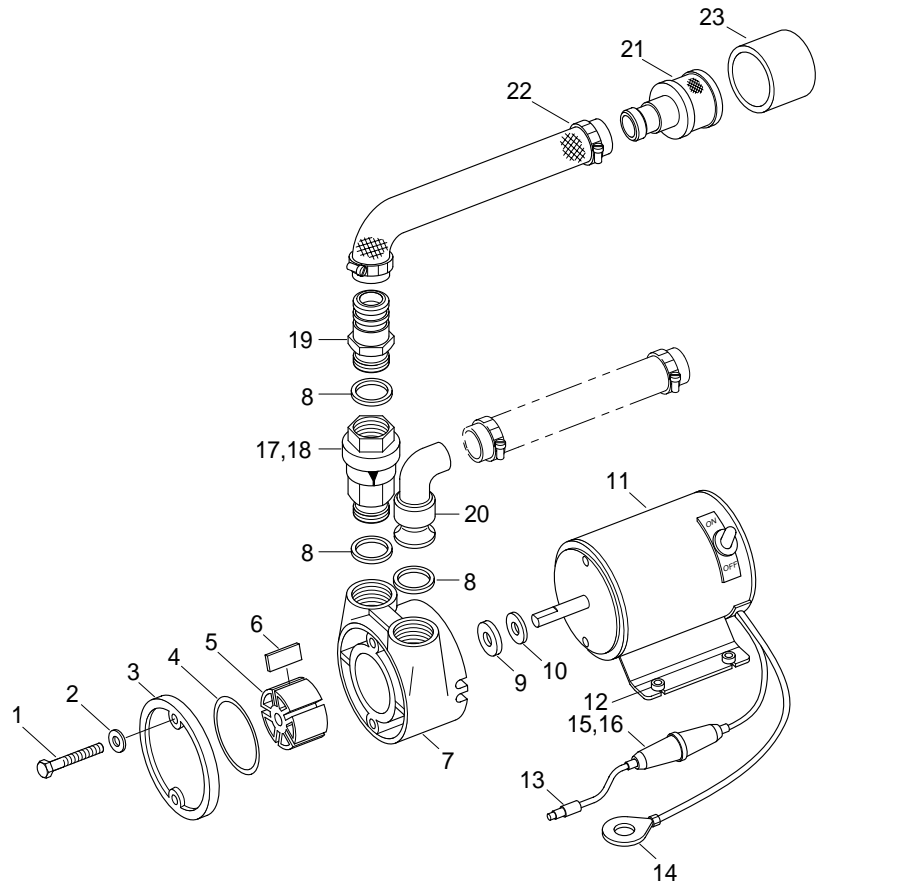


GROUP 6 FUEL FILLER PUMP

1. STRUCTURE



1	Screw	9	Seal	17	Check valve
2	Spring washer	10	Slinger	18	Nipple
3	End cover	11	Motor	19	Hose adapter
4	O-ring	12	Grommet	20	Hose adapter
5	Rotor	13	Connector	21	Strainer
6	Vane	14	Terminal	22	Hose & Clamp
7	Body	15	Fuse holder	23	Strainer cover
8	Sealing washer	16	Fuse		

2. SPECIFICATION

Specification based on diesel fuel(SG 0.86 at 20° C).

Description	Flow at 3m head	Self priming height		Operating temp. range	Weight	Fuse
		Wet	Dry			
Specification	35 l /min	2.8m	2.5m	-30~+40° C	2kg	24V 10Amp

※ Do not run dry for longer than 30 seconds.

3. DISASSEMBLY AND ASSEMBLY

1) DISASSEMBLY

※ Ensure the service kit of parts is available before disassembling pump.

- (1) Disconnect electrical supply.
- (2) Remove pipework and pump from its mounting.
- (3) Remove two end cover screws, gently slide.
- (4) Body and end cover assembly from motor shaft.
- (5) Place on workbench with end cover uppermost.
- (6) Remove end cover and O-ring.
- (7) Remove rotor and vanes.
- (8) To remove seal turn body over, if there is no evidence of leakage leave lip seal in place, otherwise gently prise out with a screw driver taking care not to damage seal bore.

2) ASSEMBLY

※ Once pump has been disassembled O-ring must always be replaced. Replace vanes rotor and seals if required.

※ Clean all parts to remove any dirt or grit.

※ Ensure there are no sharp edges on shaft or keyway which may damage seal.

※ These models all rotate anti-clockwise when viewed from pump end.

- (1) Push new seal into housing and grease lip.
- (2) Smear oil on shaft and slide on slinger.
- (3) Stand motor in a vertical position with shaft uppermost and fit body.
- (4) Fit rotor onto shaft and apply a few drops of oil in each slot.
- (5) Insert the five new vanes into their respective slots with the radius on the leading edge as figure.
- (6) Smear grease into end cover, O-ring groove and fit new O-ring.
- (7) Place end cover on body, secure with the two slotted screws and spring washers, through the body into the motor and tighten.

