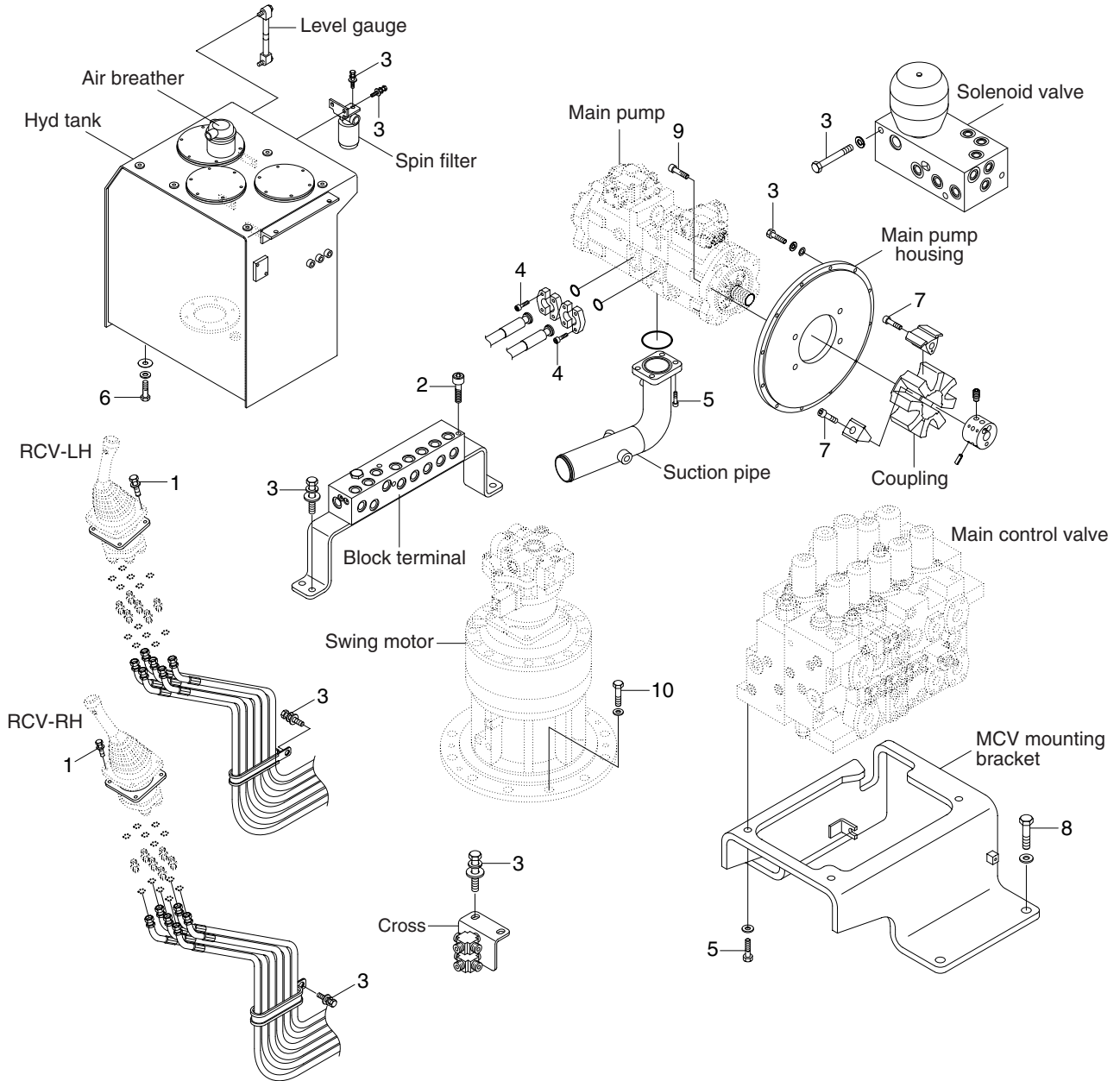


# GROUP 4 HYDRAULIC SYSTEM

## HYDRAULIC COMPONENTS MOUNTING 1



3809A9CM05

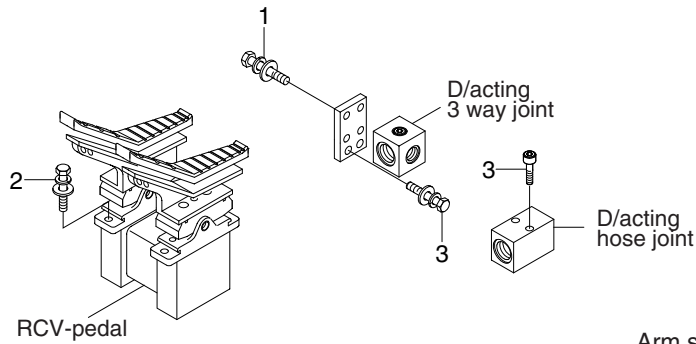
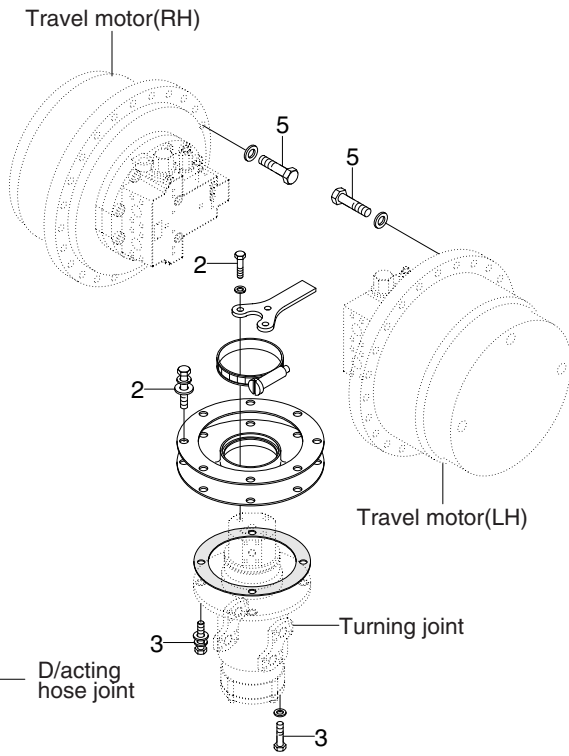
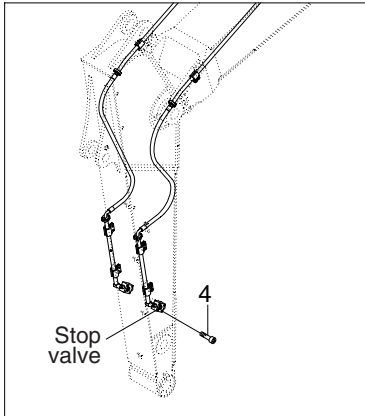
### · Tightening torque

| Item | Size     | kgf · m  | lbf · ft  |
|------|----------|----------|-----------|
| 1    | M 6×1.0  | 1.05±0.2 | 7.6±1.45  |
| 2    | M 8×1.25 | 2.5±0.5  | 18.1±3.6  |
| 3    | M10×1.5  | 6.9±1.4  | 49.9±10.1 |
| 4    | M12×1.75 | 12.3±1.3 | 92.5±21.6 |
| 5    | M16×2.0  | 29.7±4.5 | 215±32.5  |

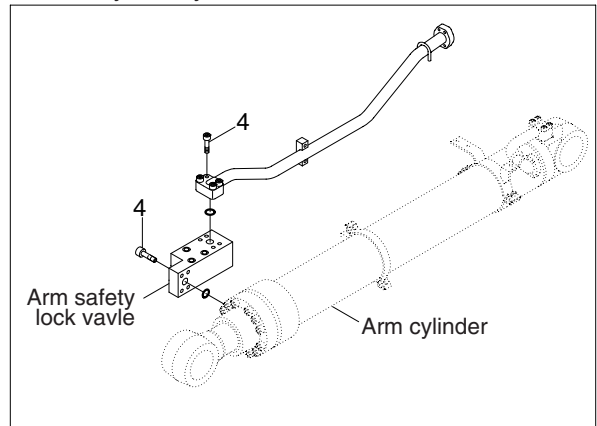
| Item | Size    | kgf · m   | lbf · ft |
|------|---------|-----------|----------|
| 6    | M20×2.5 | 46±5.0    | 333±36   |
| 7    | M20×2.5 | 46.5±2.5  | 336±18.1 |
| 8    | M20×2.5 | 57.9±8.7  | 419±62.9 |
| 9    | M20×2.5 | 69.5±10.4 | 503±75.2 |
| 10   | M24×3.0 | 97.8±15   | 707±108  |

# HYDRAULIC COMPONENTS MOUNTING 2

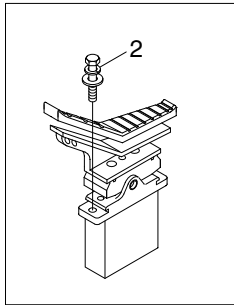
Double acting attachment piping



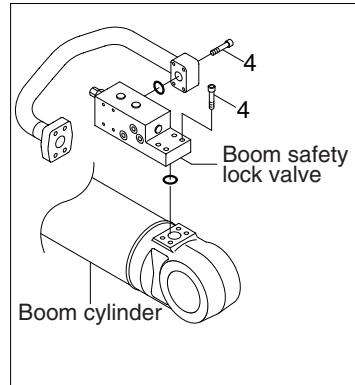
Arm safety lock system



D/acting single pedal



Boom safety lock system



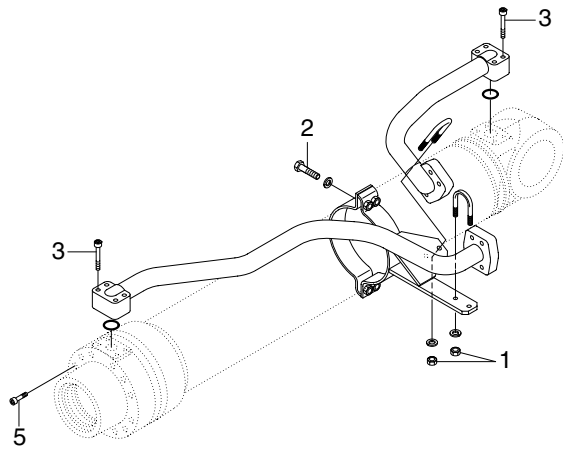
4309A9CM06

· Tightening torque

| Item | Size       | kgf · m    | lbf · ft    |
|------|------------|------------|-------------|
| 1    | M 8 × 1.25 | 4.05 ± 0.8 | 29.3 ± 5.8  |
| 2    | M10 × 1.5  | 6.9 ± 1.4  | 49.9 ± 10.1 |
| 3    | M12 × 1.75 | 12.3 ± 1.3 | 88.9 ± 9.4  |

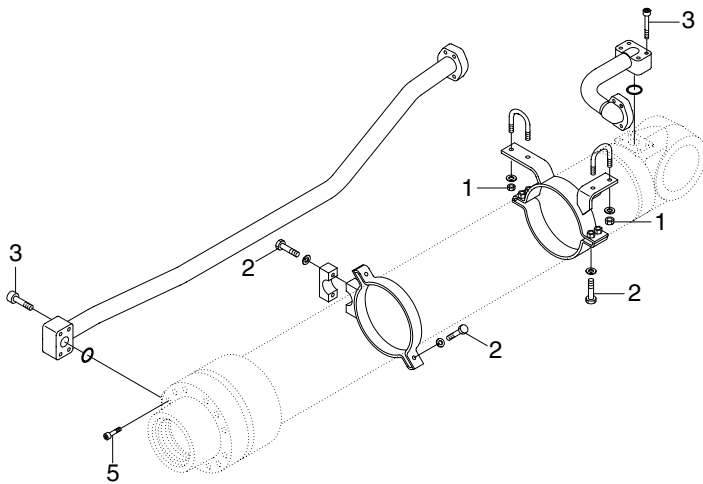
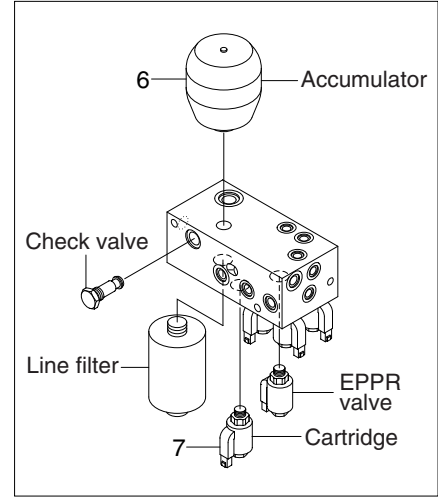
| Item | Size       | kgf · m    | lbf · ft    |
|------|------------|------------|-------------|
| 4    | M12 × 1.75 | 12.8 ± 3.0 | 92.6 ± 21.7 |
| 5    | M20 × 2.5  | 57.9 ± 8.7 | 419 ± 62.9  |
| -    | -          | -          | -           |

# HYDRAULIC COMPONENTS MOUNTING 3

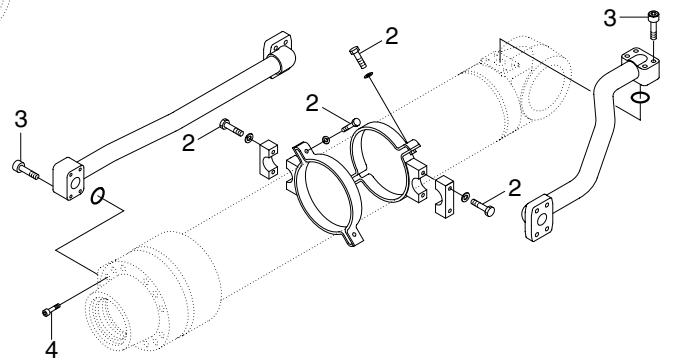


BOOM CYLINDER

## Solenoid valve



ARM CYLINDER



BUCKET CYLINDER

3809A9CM07

### · Tightening torque

| Item | Size     | kgf · m | lbf · ft |
|------|----------|---------|----------|
| 1    | M10×1.5  | 3.2±0.3 | 23.1±2.2 |
| 2    | M12×1.75 | 5.5±0.6 | 39.8±4.3 |
| 3    | M12×1.75 | 9.4±1.0 | 68.0±7.2 |
| 4    | M20×2.5  | 46±5.0  | 333±36.2 |

| Item | Size    | kgf · m | lbf · ft  |
|------|---------|---------|-----------|
| 5    | M22×2.5 | 63 ±6.0 | 456 ±43.4 |
| 6    | -       | 5.6±0.5 | 40.5±3.6  |
| 7    | -       | 2.5±0.5 | 18.1±3.6  |
| -    | -       | -       | -         |