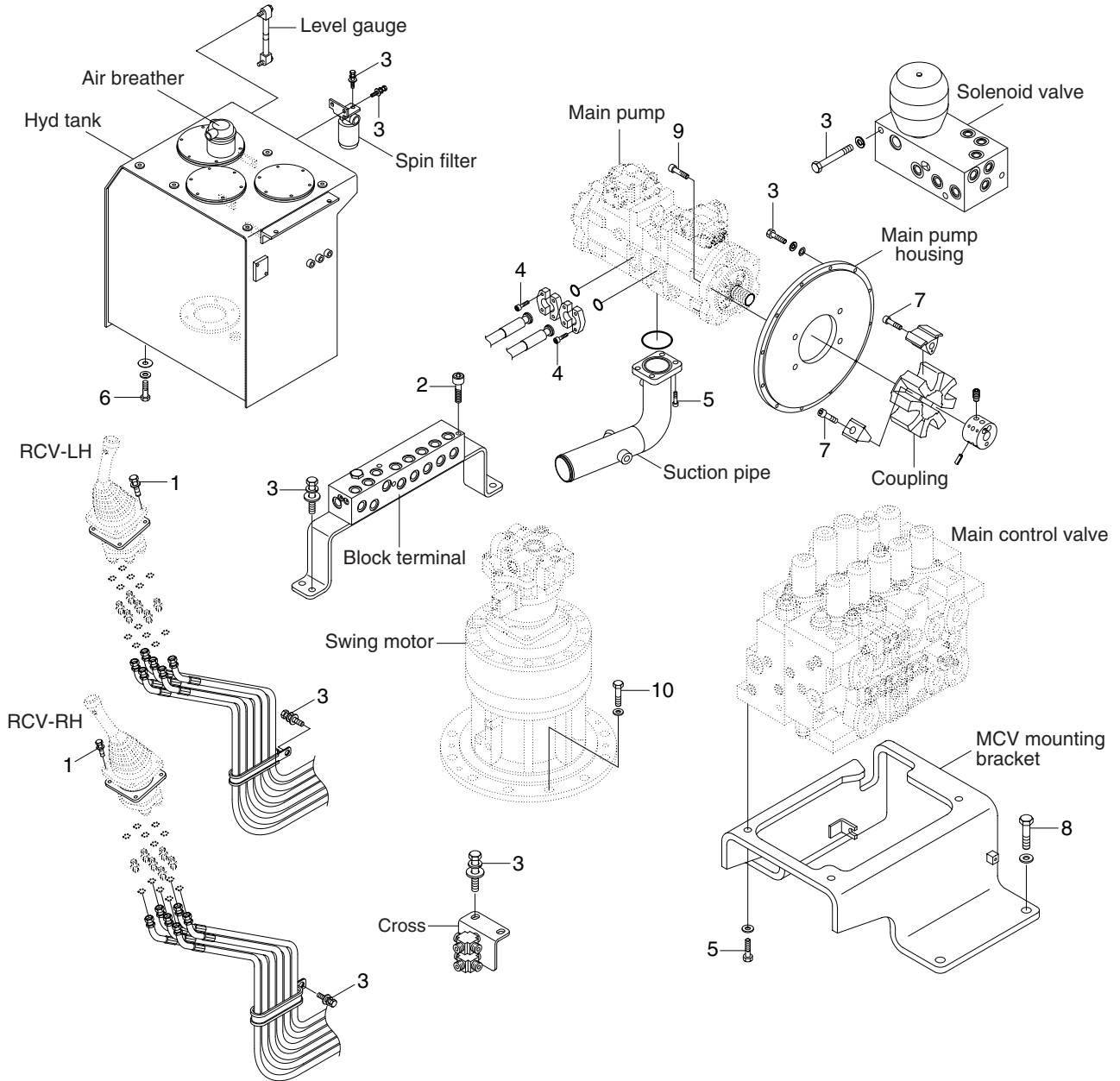


# GROUP 4 HYDRAULIC SYSTEM

## HYDRAULIC COMPONENTS MOUNTING 1



3809A9CM05

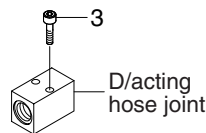
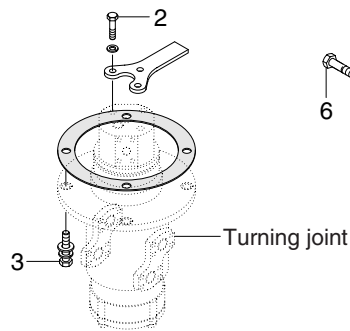
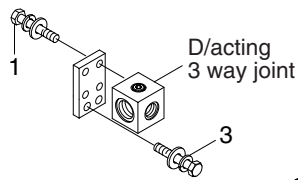
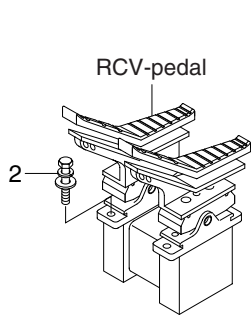
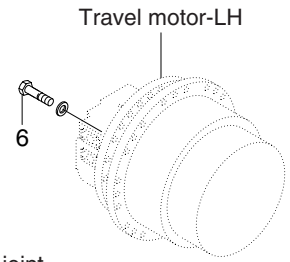
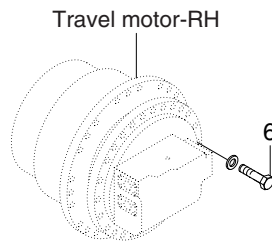
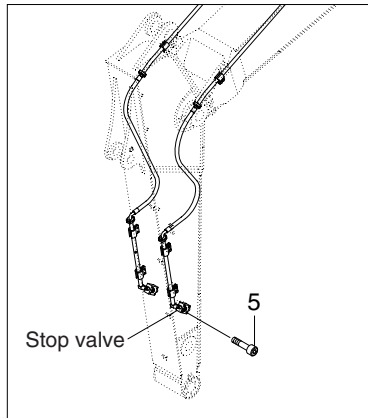
### · Tightening torque

Item	Size	kgf · m	lbf · ft
1	M 6×1.0	1.05±0.2	7.6±1.45
2	M 8×1.25	2.5±0.5	18.1±3.6
3	M10×1.5	6.9±1.4	49.9±10.1
4	M12×1.75	12.3±1.3	92.5±21.6
5	M16×2.0	29.7±4.5	215±32.5

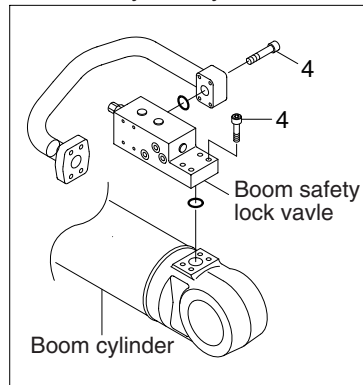
Item	Size	kgf · m	lbf · ft
6	M20×2.5	46±5.0	333±36
7	M20×2.5	46.5±2.5	336±18.1
8	M20×2.5	57.9±8.7	419±62.9
9	M20×2.5	69.5±10.4	503±75.2
10	M24×3.0	97.8±15	707±108

# HYDRAULIC COMPONENTS MOUNTING 2

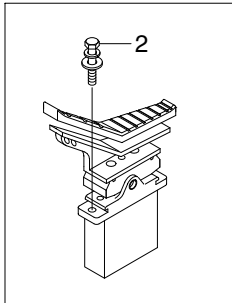
Double acting attachment piping



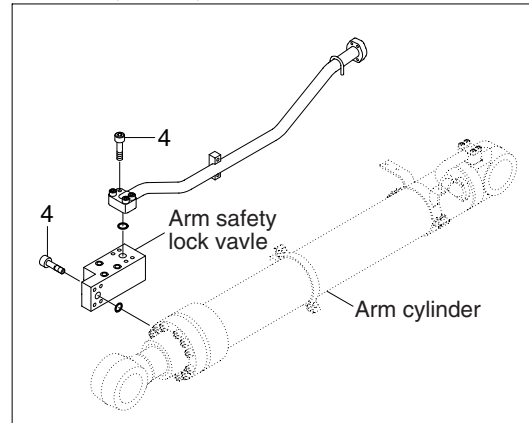
Boom safety lock system



D/acting single pedal



Arm safety lock system



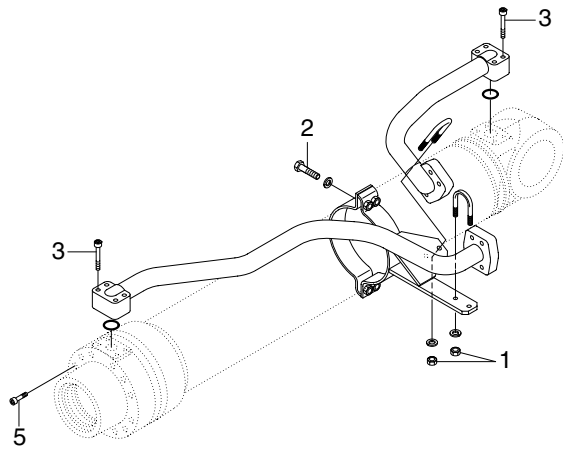
3809A9CM06

· Tightening torque

Item	Size	kgf · m	lbf · ft
1	M 8 × 1.25	4.05 ± 0.8	29.3 ± 5.8
2	M10 × 1.5	6.9 ± 1.4	49.9 ± 10.1
3	M12 × 1.75	12.3 ± 1.2	88.9 ± 8.7

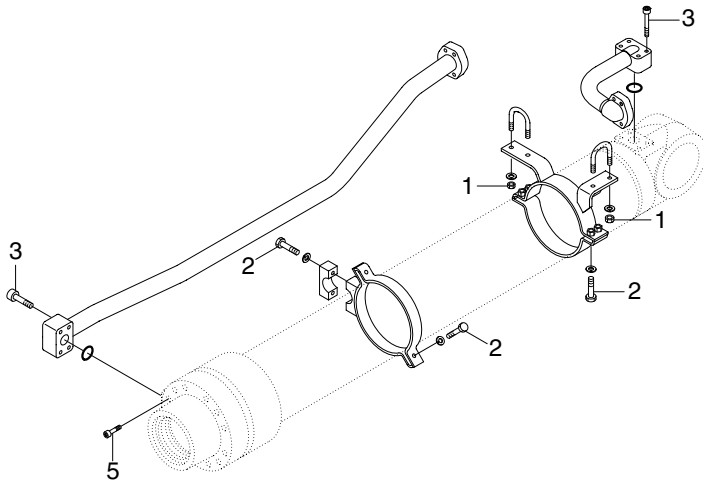
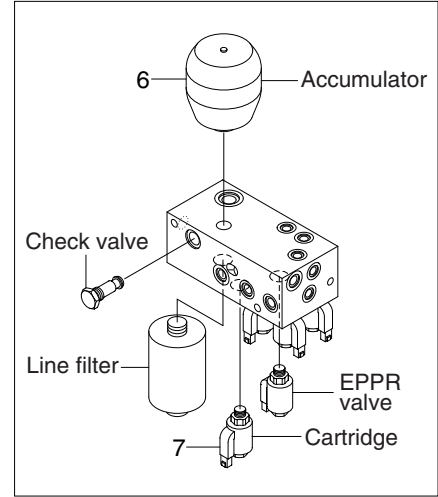
Item	Size	kgf · m	lbf · ft
4	M12 × 1.75	12.8 ± 3.0	92.6 ± 21.7
5	M16 × 2.0	29.7 ± 4.5	215 ± 32.5
6	M20 × 2.5	58 ± 6.0	420 ± 43.4

# HYDRAULIC COMPONENTS MOUNTING 3

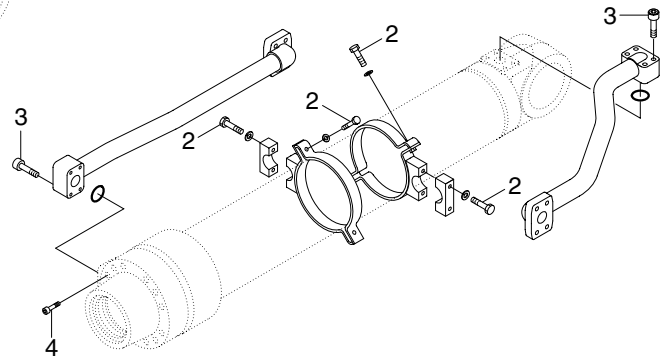


BOOM CYLINDER

## Solenoid valve



ARM CYLINDER



BUCKET CYLINDER

3809A9CM07

### · Tightening torque

Item	Size	kgf · m	lbf · ft
1	M10×1.5	3.2±0.3	23.1±2.2
2	M12×1.75	5.5±0.6	39.8±4.3
3	M12×1.75	9.4±1.0	68.0±7.2
4	M20×2.5	46±5.0	333±36.2

Item	Size	kgf · m	lbf · ft
5	M22×2.5	63 ±6.0	456 ±43.4
6	-	5.6±0.5	40.5±3.6
7	-	2.5±0.5	18.1±3.6
-	-	-	-