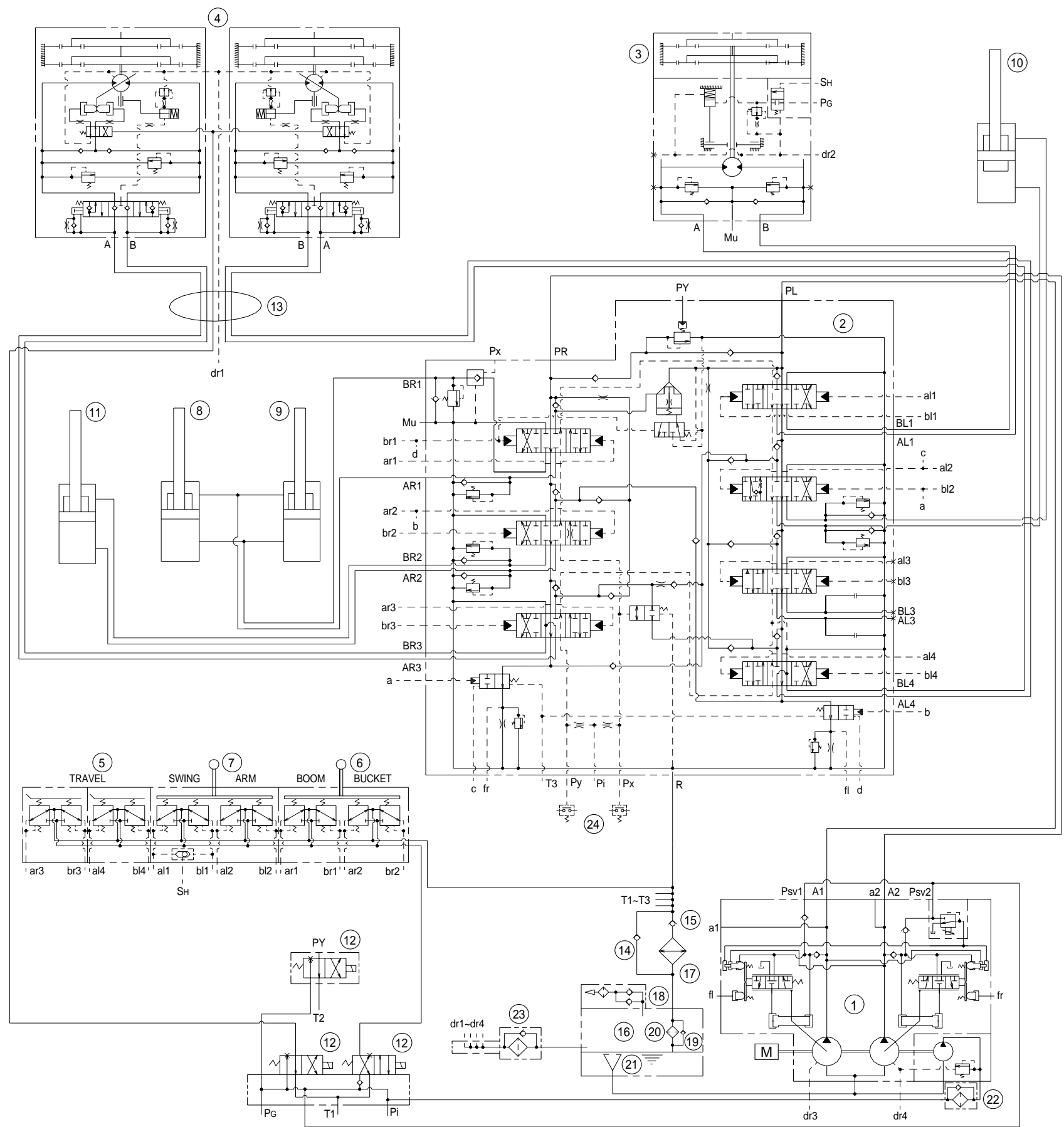


GROUP 1 HYDRAULIC CIRCUIT



- 1 HYD PUMP
- 2 MCV
- 3 SWING MOTOR
- 4 TRAVEL MOTOR
- 5 RCV PEDAL
- 6 RCV REVER
- 7 RCV REVER
- 8 BOOM CYL(RH)
- 9 BOOM CYL(LH)
- 10 ARM CYL
- 11 BUCKET CYL
- 12 SOLENOID VALVE
- 13 TURNING JOINT
- 14 CHECK VALVE
- 15 CHECK VALVE
- 16 HYD TANK
- 17 OIL COOLER
- 18 BREATHER
- 19 BYPASS VALVE
- 20 RETURN FILTER
- 21 SUCTION STRAINER
- 22 LINE FILTER
- 23 SPIN FILTER
- 24 PRESSURE SWITCH