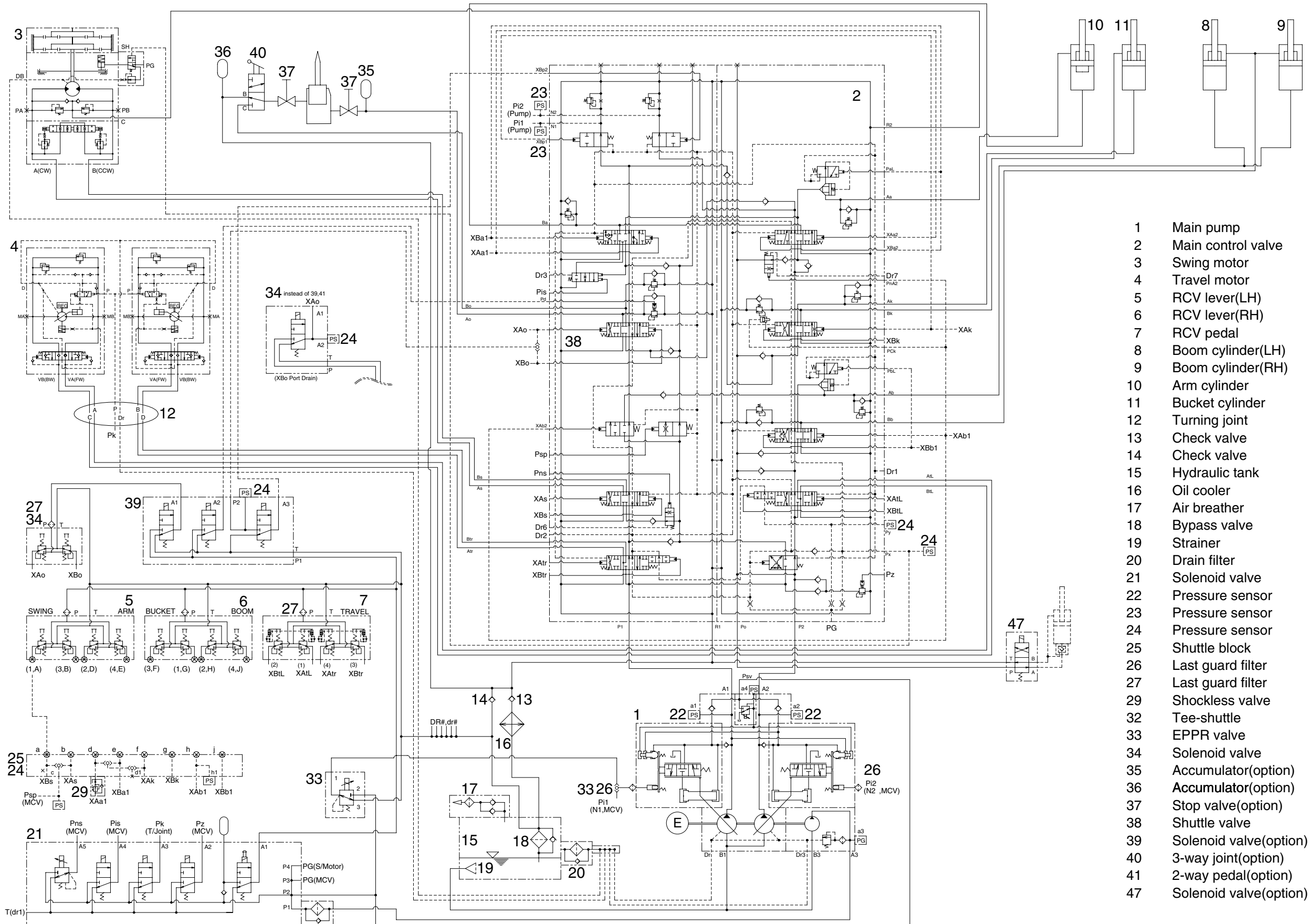
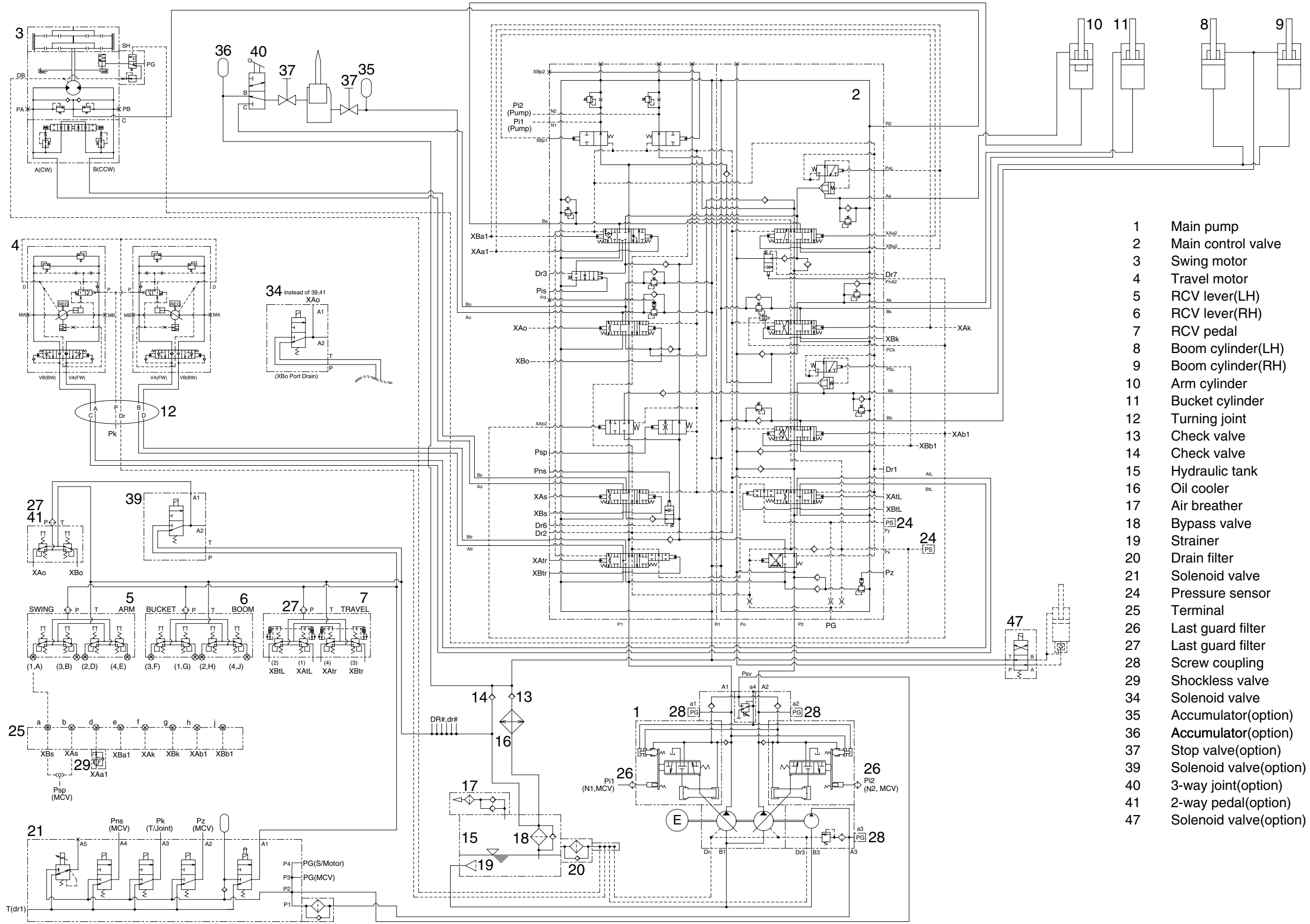


GROUP 1 HYDRAULIC CIRCUIT (CLUSTER TYPE 1)



- 1 Main pump
- 2 Main control valve
- 3 Swing motor
- 4 Travel motor
- 5 RCV lever(LH)
- 6 RCV lever(RH)
- 7 RCV pedal
- 8 Boom cylinder(LH)
- 9 Boom cylinder(RH)
- 10 Arm cylinder
- 11 Bucket cylinder
- 12 Turning joint
- 13 Check valve
- 14 Check valve
- 15 Hydraulic tank
- 16 Oil cooler
- 17 Air breather
- 18 Bypass valve
- 19 Strainer
- 20 Drain filter
- 21 Solenoid valve
- 22 Pressure sensor
- 23 Pressure sensor
- 24 Pressure sensor
- 25 Shuttle block
- 26 Last guard filter
- 27 Last guard filter
- 29 Shockless valve
- 32 Tee-shuttle
- 33 EPPR valve
- 34 Solenoid valve
- 35 Accumulator(option)
- 36 Accumulator(option)
- 37 Stop valve(option)
- 38 Shuttle valve
- 39 Solenoid valve(option)
- 40 3-way joint(option)
- 41 2-way pedal(option)
- 47 Solenoid valve(option)

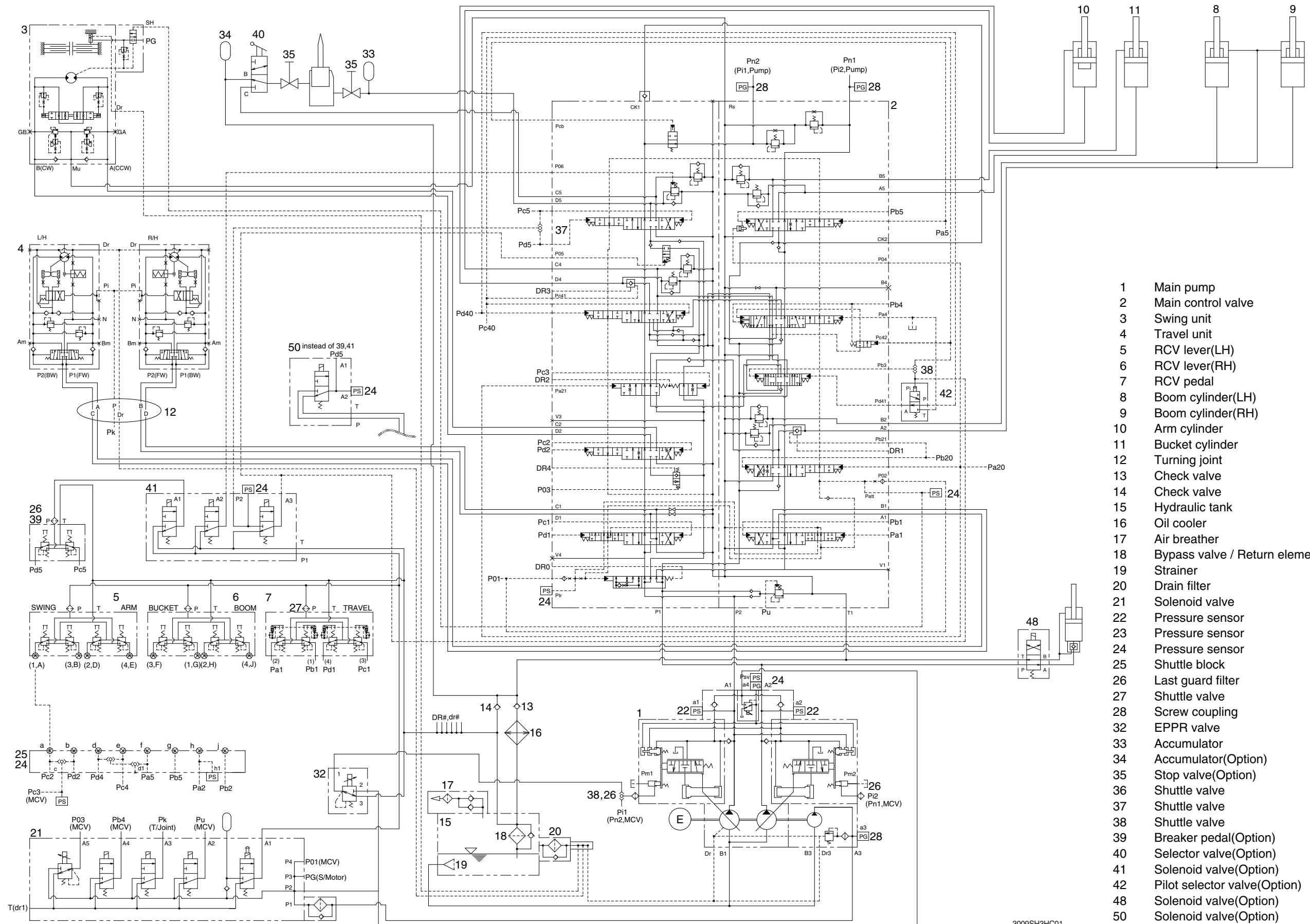
HYDRAULIC CIRCUIT (CLUSTER TYPE 2)



- 1 Main pump
- 2 Main control valve
- 3 Swing motor
- 4 Travel motor
- 5 RCV lever(LH)
- 6 RCV lever(RH)
- 7 RCV pedal
- 8 Boom cylinder(LH)
- 9 Boom cylinder(RH)
- 10 Arm cylinder
- 11 Bucket cylinder
- 12 Turning joint
- 13 Check valve
- 14 Check valve
- 15 Hydraulic tank
- 16 Oil cooler
- 17 Air breather
- 18 Bypass valve
- 19 Strainer
- 20 Drain filter
- 21 Solenoid valve
- 24 Pressure sensor
- 25 Terminal
- 26 Last guard filter
- 27 Last guard filter
- 28 Screw coupling
- 29 Shockless valve
- 34 Solenoid valve
- 35 Accumulator(option)
- 36 Accumulator(option)
- 37 Stop valve(option)
- 39 Solenoid valve(option)
- 40 3-way joint(option)
- 41 2-way pedal(option)
- 47 Solenoid valve(option)

3309S3HC01S

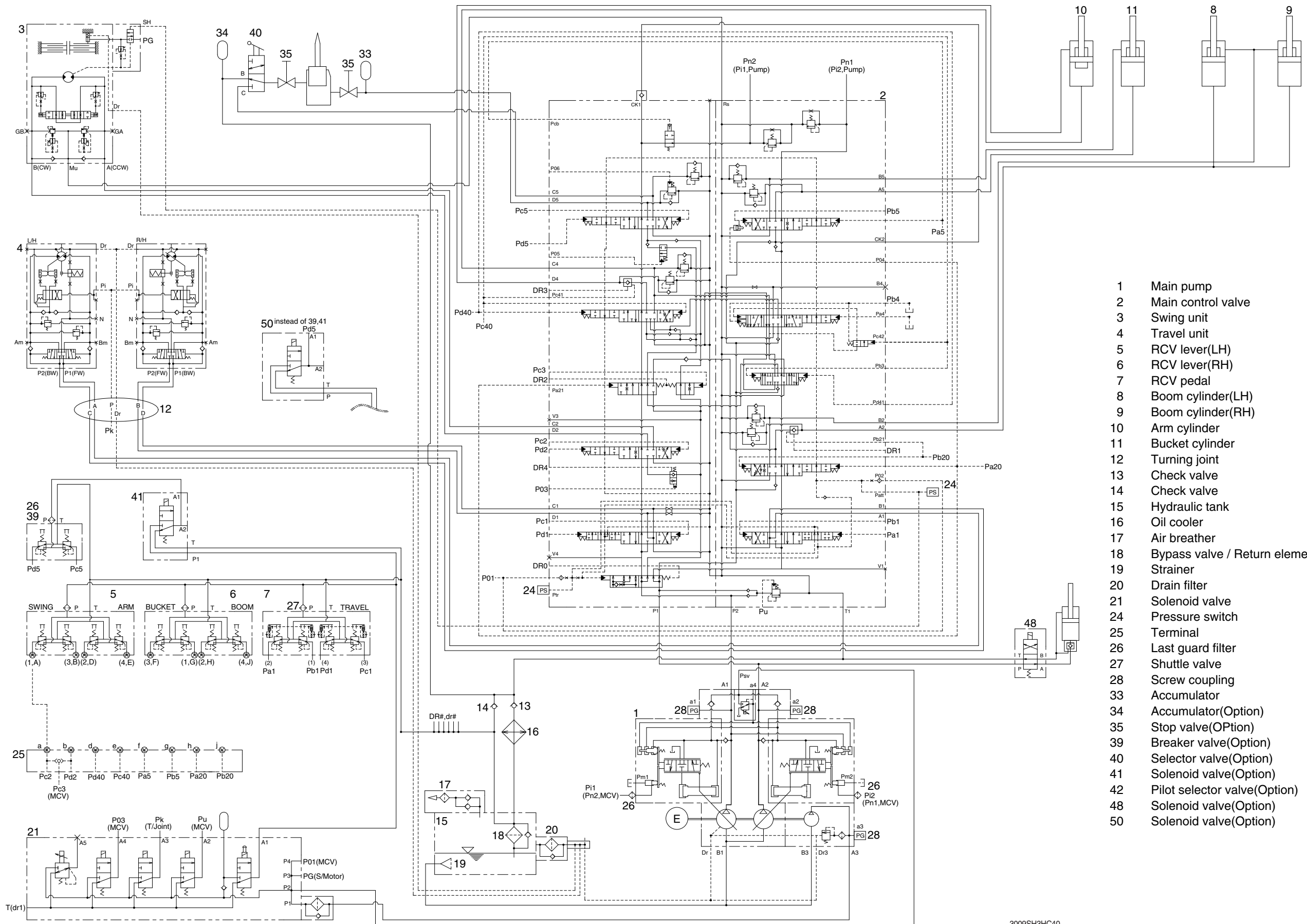
HYDRAULIC CIRCUIT (CLUSTER TYPE 1, MCV TYPE 2, 3)



- 1 Main pump
- 2 Main control valve
- 3 Swing unit
- 4 Travel unit
- 5 RCV lever(LH)
- 6 RCV lever(RH)
- 7 RCV pedal
- 8 Boom cylinder(LH)
- 9 Boom cylinder(RH)
- 10 Arm cylinder
- 11 Bucket cylinder
- 12 Turning joint
- 13 Check valve
- 14 Check valve
- 15 Hydraulic tank
- 16 Oil cooler
- 17 Air breather
- 18 Bypass valve / Return element
- 19 Strainer
- 20 Drain filter
- 21 Solenoid valve
- 22 Pressure sensor
- 23 Pressure sensor
- 24 Pressure sensor
- 25 Shuttle block
- 26 Last guard filter
- 27 Shuttle valve
- 28 Screw coupling
- 32 EPPR valve
- 33 Accumulator
- 34 Accumulator(Optional)
- 35 Stop valve(Optional)
- 36 Shuttle valve
- 37 Shuttle valve
- 38 Shuttle valve
- 39 Breaker pedal(Optional)
- 40 Selector valve(Optional)
- 41 Solenoid valve(Optional)
- 42 Pilot selector valve(Optional)
- 48 Solenoid valve(Optional)
- 50 Solenoid valve(Optional)

3009SH3HC01

HYDRAULIC CIRCUIT (CLUSTER TYPE 2, MCV TYPE 2, 3)



- 1 Main pump
- 2 Main control valve
- 3 Swing unit
- 4 Travel unit
- 5 RCV lever(LH)
- 6 RCV lever(RH)
- 7 RCV pedal
- 8 Boom cylinder(LH)
- 9 Boom cylinder(RH)
- 10 Arm cylinder
- 11 Bucket cylinder
- 12 Turning joint
- 13 Check valve
- 14 Check valve
- 15 Hydraulic tank
- 16 Oil cooler
- 17 Air breather
- 18 Bypass valve / Return element
- 19 Strainer
- 20 Drain filter
- 21 Solenoid valve
- 24 Pressure switch
- 25 Terminal
- 26 Last guard filter
- 27 Shuttle valve
- 28 Screw coupling
- 33 Accumulator
- 34 Accumulator(Optional)
- 35 Stop valve(Optional)
- 39 Breaker valve(Optional)
- 40 Selector valve(Optional)
- 41 Solenoid valve(Optional)
- 42 Pilot selector valve(Optional)
- 48 Solenoid valve(Optional)
- 50 Solenoid valve(Optional)

3009SH3HC40