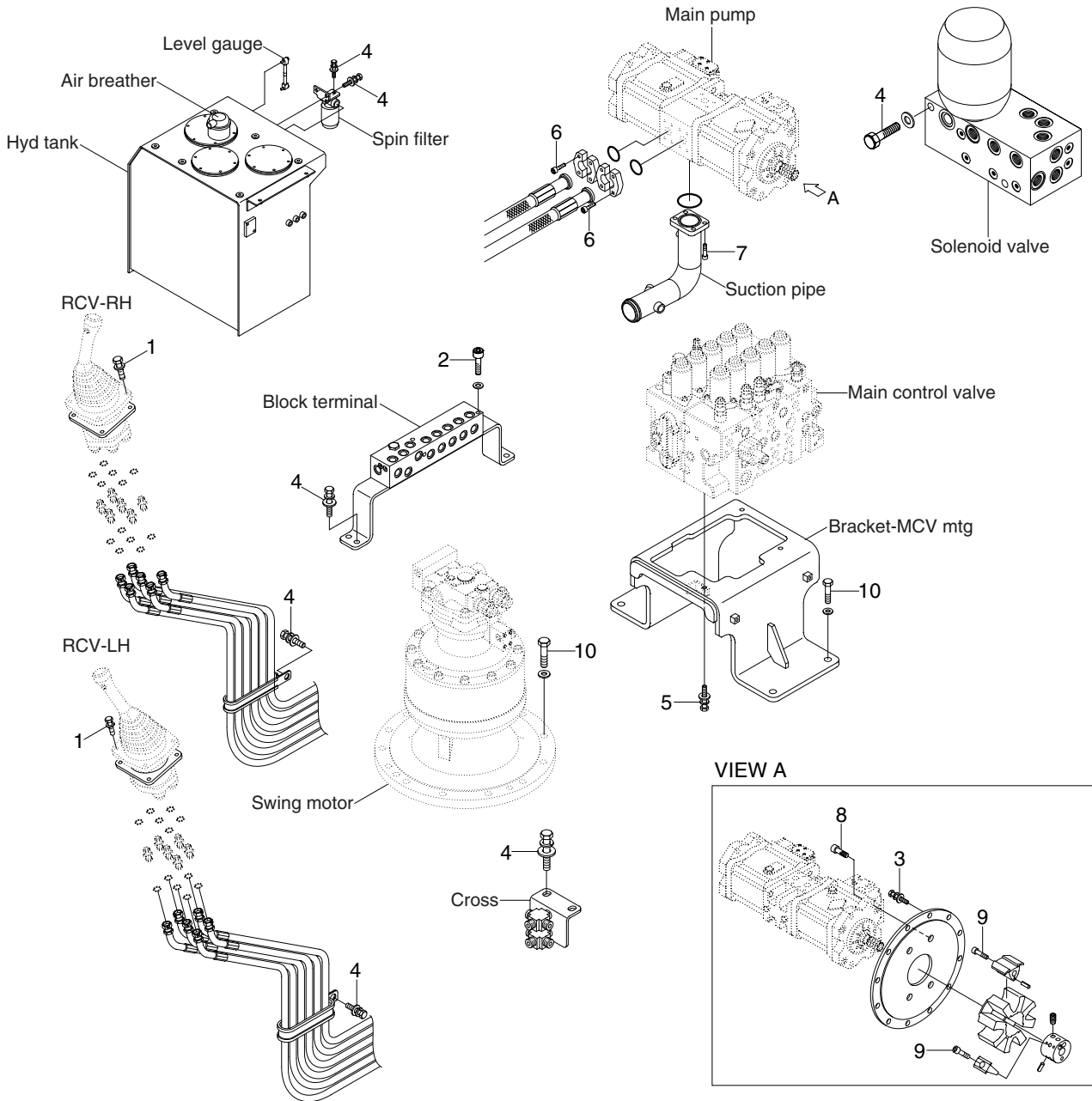


# GROUP 4 HYDRAULIC SYSTEM

## HYDRAULIC COMPONENTS MOUNTING 1



3309A9CM05

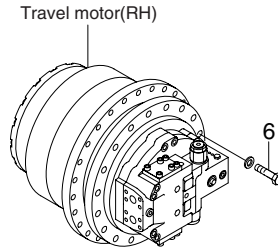
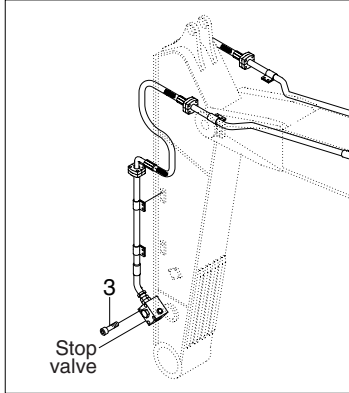
• Tightening torque

Item	Size	kgf · m	lbf · ft
1	M 6×1.0	1.05±0.2	7.6±1.45
2	M 8×1.25	2.5±0.5	18.1±3.6
3	M10×1.5	5.3±0.5	38.3±3.6
4	M10×1.5	6.9±1.4	49.9±10.1
5	M12×1.75	12.8±3.0	88.9±9.4

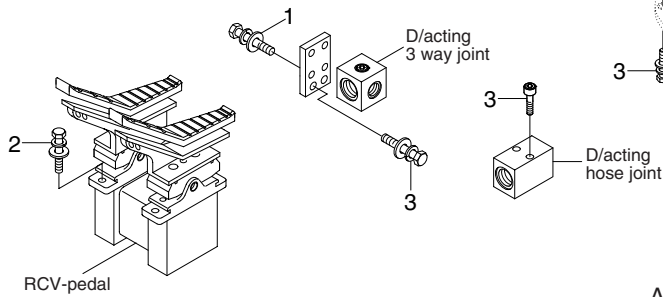
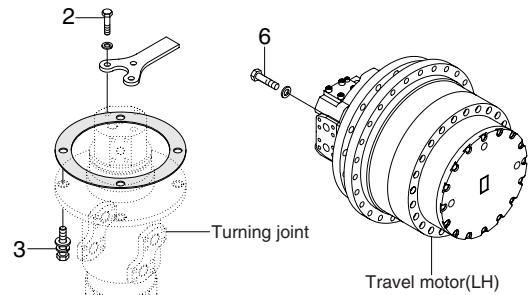
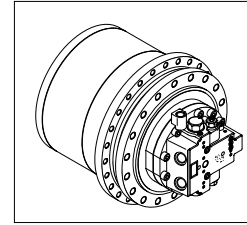
Item	Size	kgf · m	lbf · ft
6	M12×1.75	12.8±3.0	92.5±21.6
7	M16×2.0	29.7±4.5	215±32.5
8	M20×2.5	42±4.5	304±32.5
9	M20×2.5	46.5±2.5	336±18.1
10	M20×2.5	57.9±5.8	419±57.9

# HYDRAULIC COMPONENTS MOUNTING 2

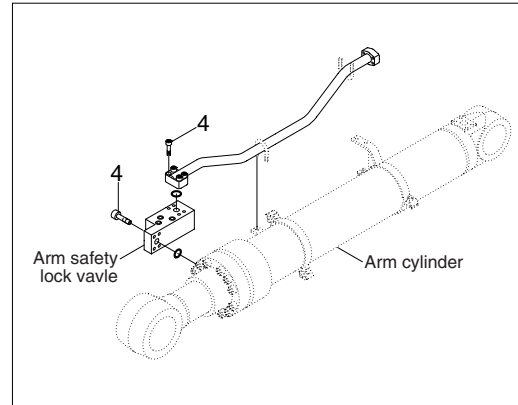
Double acting attachment piping



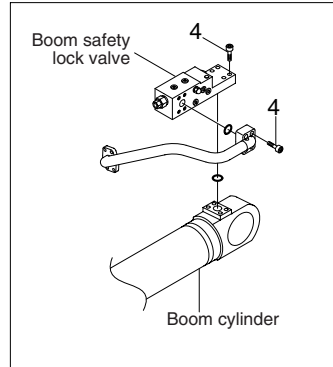
TYPE 2



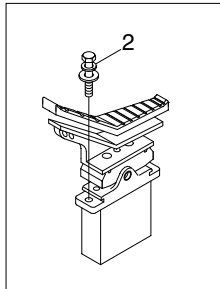
Arm safety lock system



Boom safety lock system



D/acting single pedal



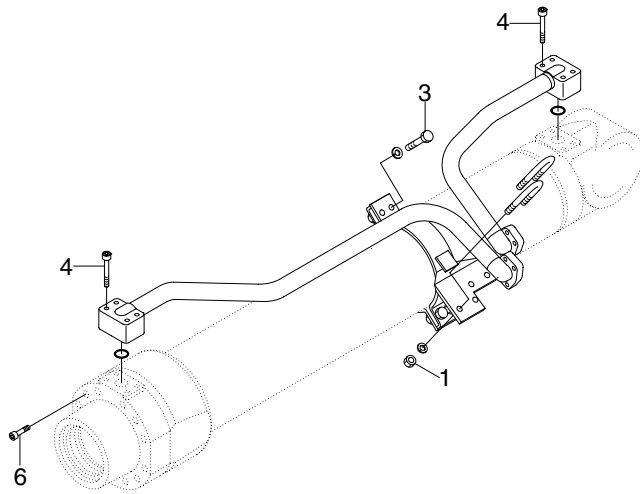
3309A9CM06

· Tightening torque

Item	Size	kgf · m	lbf · ft
1	M 8 × 1.25	4.05 ± 0.8	29.3 ± 5.8
2	M10 × 1.5	6.9 ± 1.4	49.9 ± 10.1
3	M12 × 1.75	12.3 ± 1.3	88.9 ± 9.4

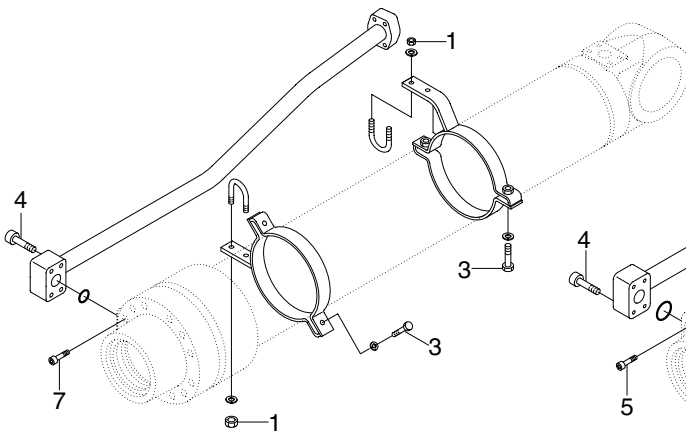
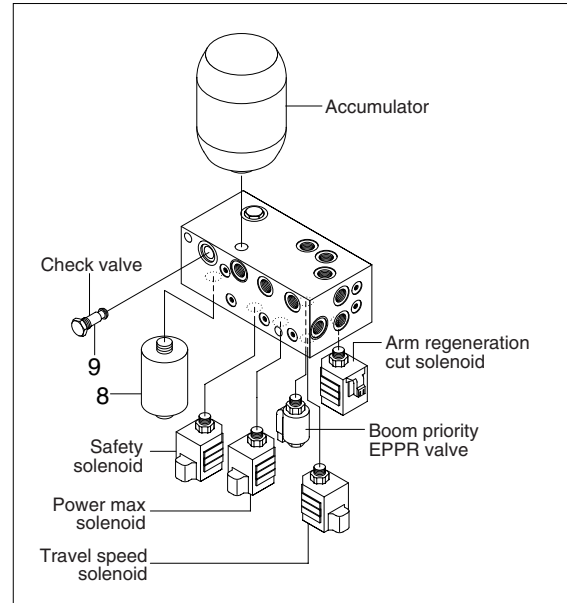
Item	Size	kgf · m	lbf · ft
4	M12 × 1.75	12.8 ± 3.0	92.6 ± 21.7
5	M16 × 2.0	29.7 ± 4.5	215 ± 32.5
6	M24 × 3.0	84 ± 8.0	608 ± 32.5

# HYDRAULIC COMPONENTS MOUNTING 3

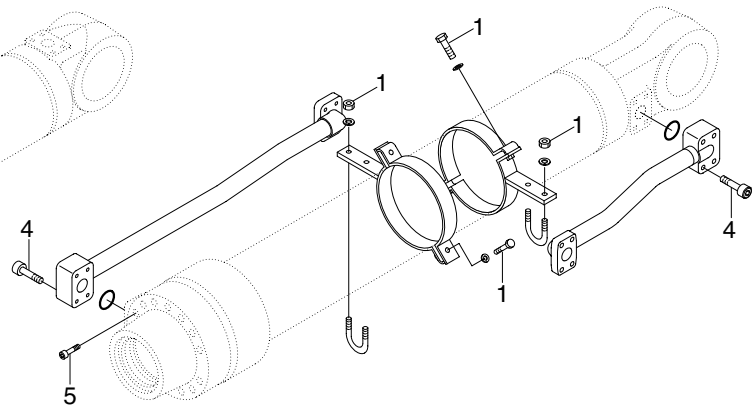


BOOM CYLINDER

## Solenoid valve



ARM CYLINDER



BUCKET CYLINDER

3309A9CM07

### · Tightening torque

Item	Size	kgf · m	lbf · ft
1	M10×1.5	3.2±0.3	23.1±2.2
3	M12×1.75	5.5±0.6	39.8±4.3
4	M12×1.75	9.4±1.0	68.0±7.2
5	M18×2.5	32±3.0	232±21.7

Item	Size	kgf · m	lbf · ft
6	M20×2.5	46±5.0	333±36.2
7	M22×2.5	63±6.0	456±43.4
8	Line filter	2.5	18.0
9	Check valve	4.0	28.9