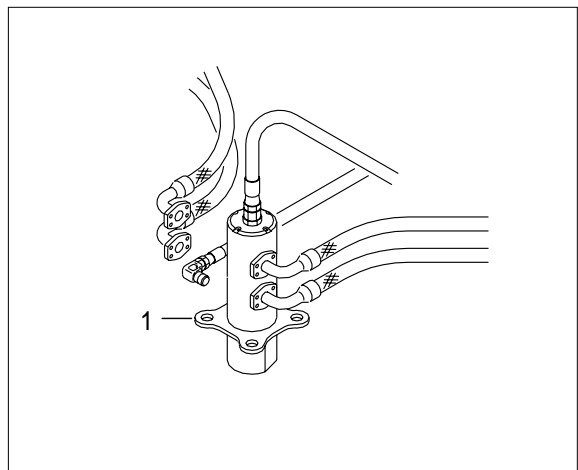


GROUP 8 TURNING JOINT

1. REMOVAL AND INSTALL

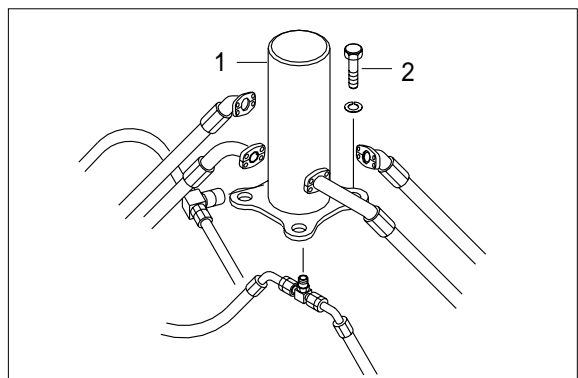
1) REMOVAL

- (1) Lower the work equipment to the ground and stop the engine.
- (2) Loosen the breather slowly to release the pressure inside the hydraulic tank.
 - ▲ Escaping fluid under pressure can penetrate the skin causing serious injury.
 - ※ When pipes and hoses are disconnected, the oil inside the piping will flow out, so catch it in oil pan.
- (3) Disconnect all hoses .
- (4) Sling the turning joint assembly (1) and remove the mounting bolt(2).
 - Weight : 50kg(110lb)
 - Tightening torque : 29.6kgf · m(214.1lb · ft)
- (5) Remove the turning joint assembly.
 - ※ When removing the turning joint, check that all the hoses have been disconnected.



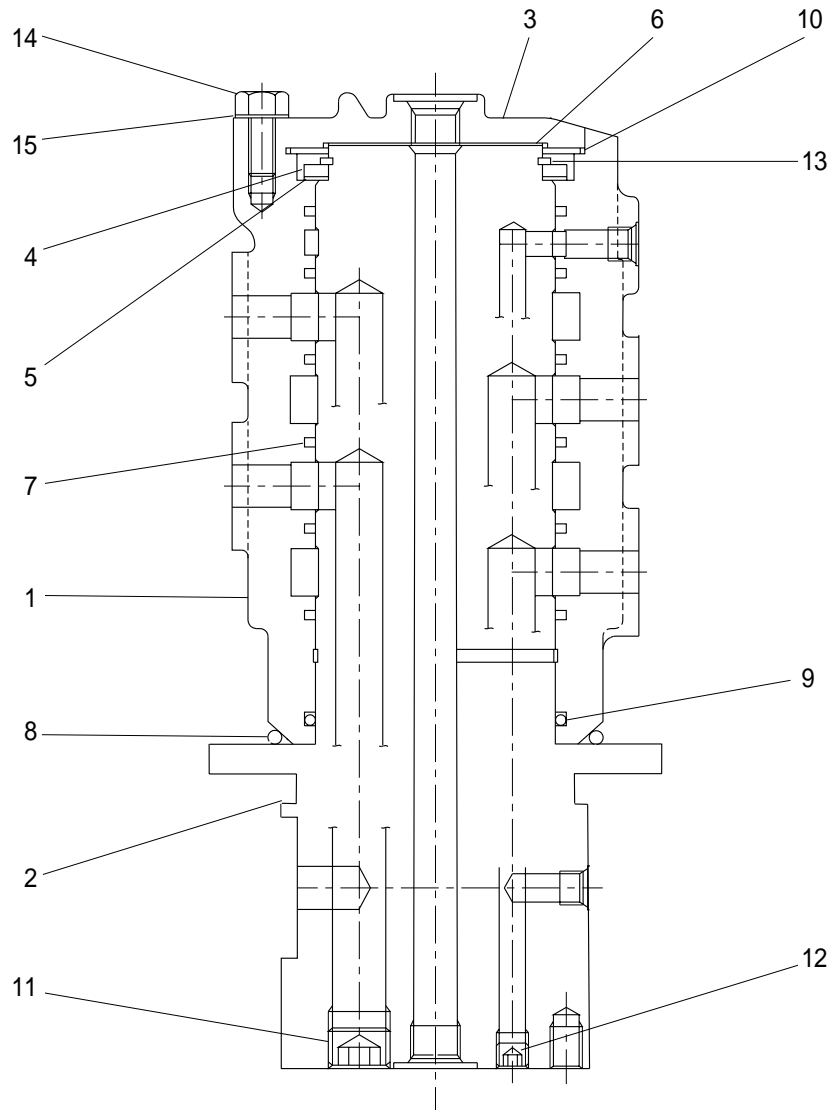
2) INSTALL

- (1) Carry out installation in the reverse order to removal.
 - ※ Take care of turning joint direction.
 - ※ Assemble hoses to their original positions.
 - ※ Confirmed the hydraulic oil level and check the hydraulic oil leak or not.



2. DISASSEMBLY AND ASSEMBLY

1) STRUCTURE

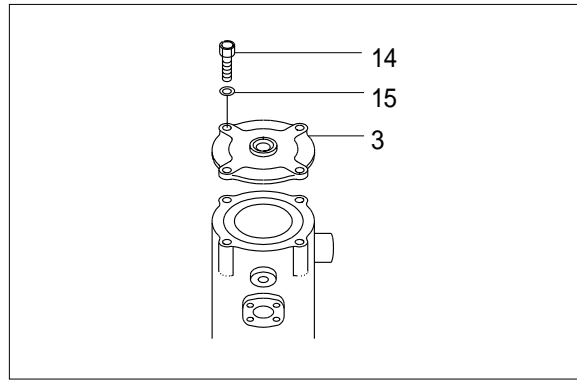


- | | | | | | |
|---|----------------|----|--------------|----|---------------|
| 1 | Hub | 6 | Shim | 11 | PT Plug |
| 2 | Shaft assembly | 7 | Slipper seal | 12 | PT Plug |
| 3 | Cover | 8 | O-ring | 13 | Retainer ring |
| 4 | Spacer | 9 | O-ring | 14 | Hexagon bolt |
| 5 | Shim | 10 | O-ring | 15 | Spring washer |

2) DISASSEMBLY

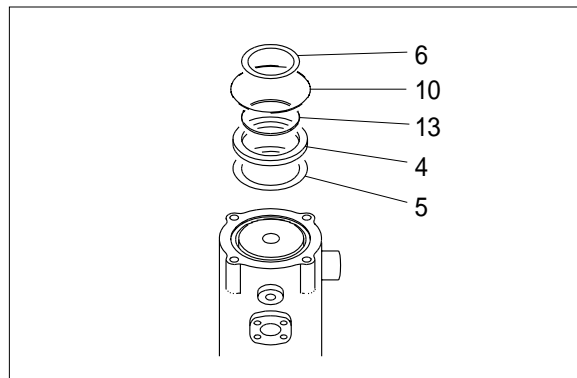
※ Before the disassembly, clean the turning joint.

- (1) Remove bolts(14), washer(15) and cover (3).



- (2) Remove shim(6) and O-ring(10).

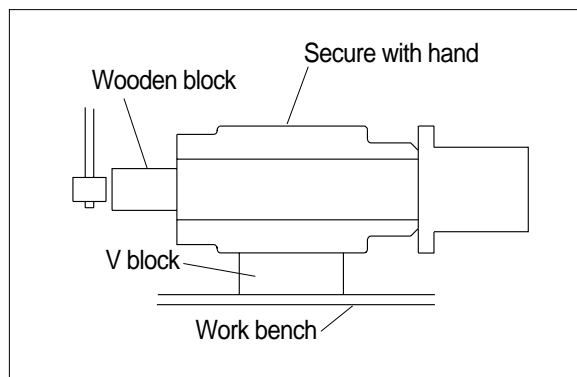
- (3) Remove retainer ring(13), spacer(4) and shim (5).



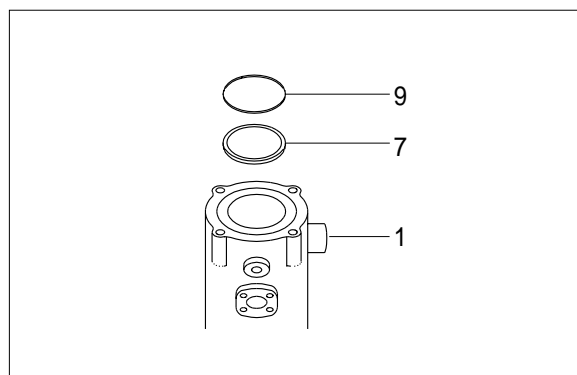
- (4) Place body(1) on a V-block and by using a wood buffer at the shaft end, hit out shaft(2) to about 1/2 from the body. With a hammer.

※ Take care not to damage the shaft(2) when remove body(1) or rest it sideways.

※ Put a fitting mark on body(1) and shaft(2).



- (5) Remove six slipper seals(7) and O-ring (9) from body(1).

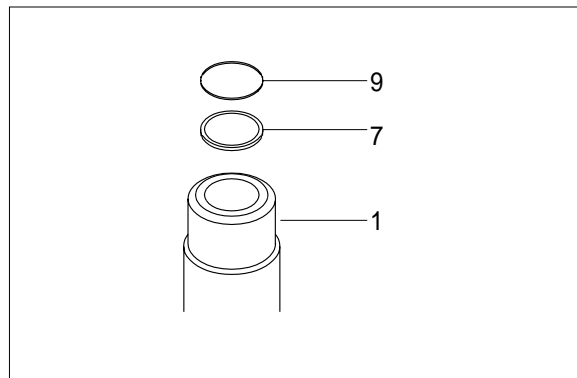


3) ASSEMBLY

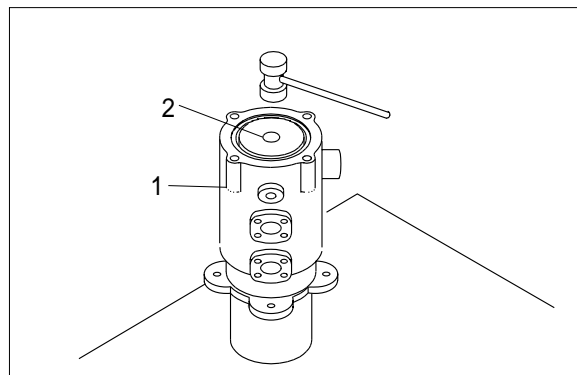
- ※ Clean all parts.
- ※ As a general rule, replace oil seals and O-ring.
- ※ Coat the sliding surfaces of all parts with engine oil or grease before installing.

(1) Fit six slipper seal(7) and O-ring(9) to body(1).

(2) Fit O-ring(8) to shaft(2).



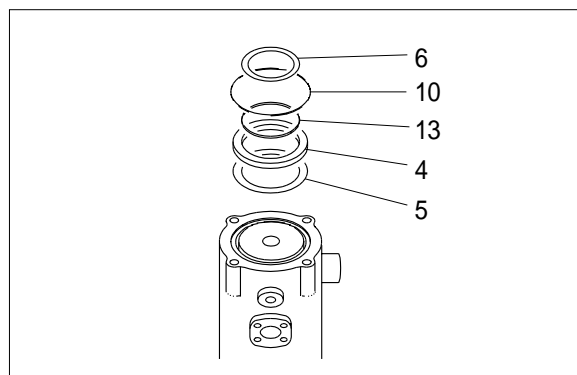
(3) Set shaft(2) on block, tap body(1) with a plastic hammer to install.



(4) Fit shim(5), spacer(4) and retainer ring (13) to shaft(2).

(5) Fit O-ring(10) to body(1).

(6) Fit shim(6) to shaft(2).



- (7) Install cover(3) to body(1) and tighten bolts(14).
· Torque : 10 ~ 12.5 kgf · m

