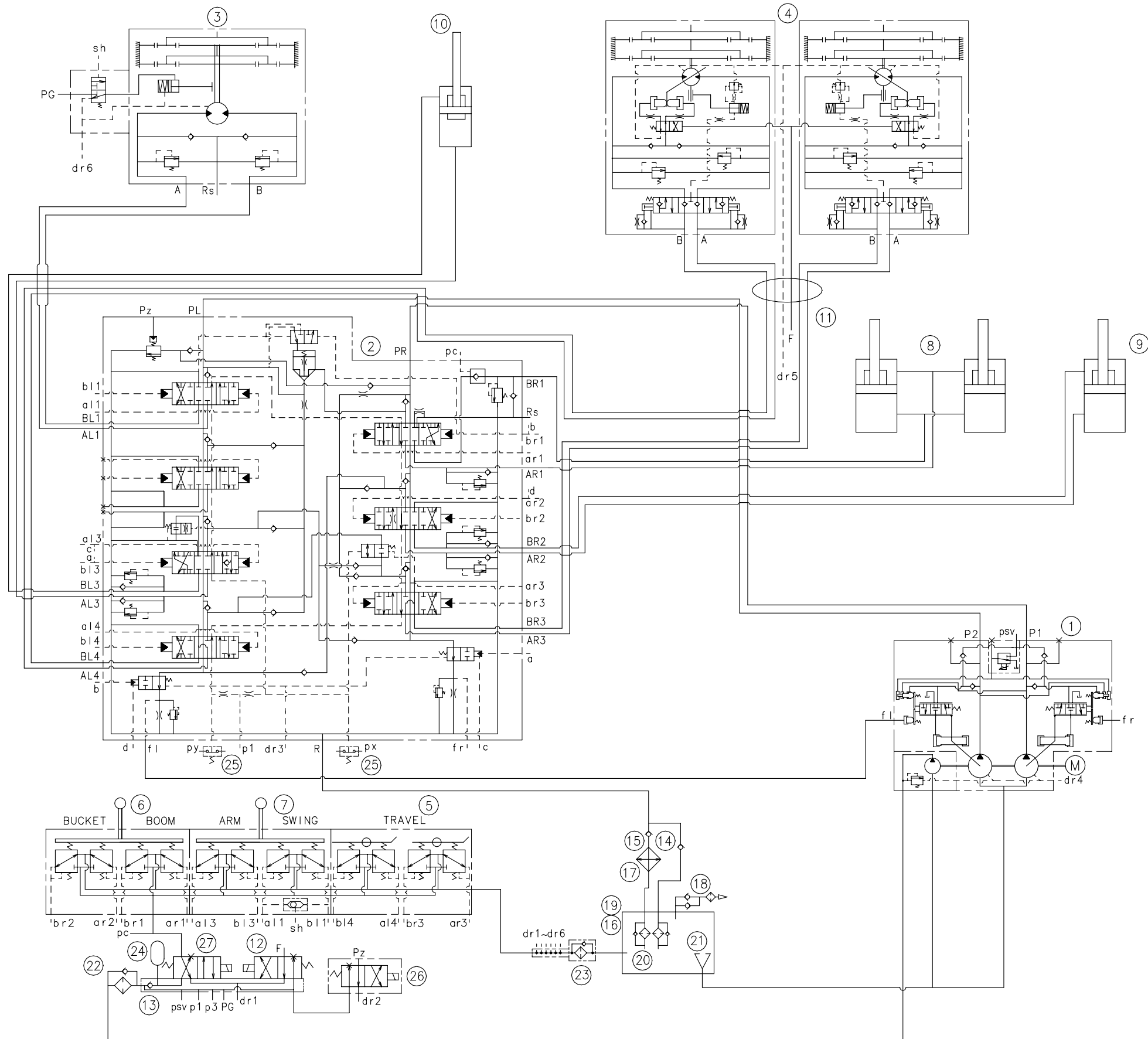


GROUP 1 HYDRAULIC CIRCUIT



- 1 MAIN PUMP
- 2 MAIN CONTROL VALVE
- 3 SWING MOTOR
- 4 TRAVEL MOTOR
- 5 RCV PEDAL
- 6 RCV LEVER
- 7 RCV LEVER
- 8 BOOM CYLINDER
- 9 BUCKET CYLINDER
- 10 ARM CYLINDER
- 11 TURNING JOINT
- 12 SOLENOID VALVE
- 13 CHECK VALVE
- 14 CHECK VALVE
- 15 CHECK VALVE
- 16 HYDRAULIC TANK
- 17 OIL COOLER
- 18 AIR BREATHER
- 19 BY PASS VALVE
- 20 RETURN FILTER
- 21 STRAINER
- 22 LINE FILTER
- 23 DRAIN FILTER
- 24 ACCUMULATOR
- 25 PRESSURE SWITCH
- 26 SOLENOID BLOCK
- 27 SOLENOID VALVE