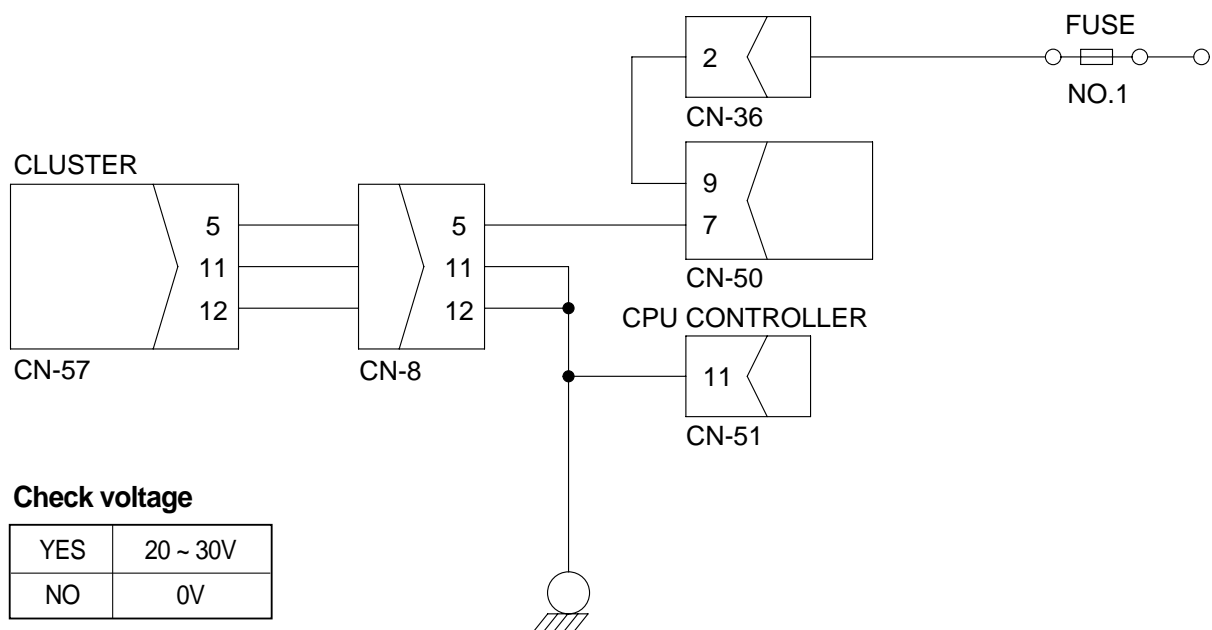
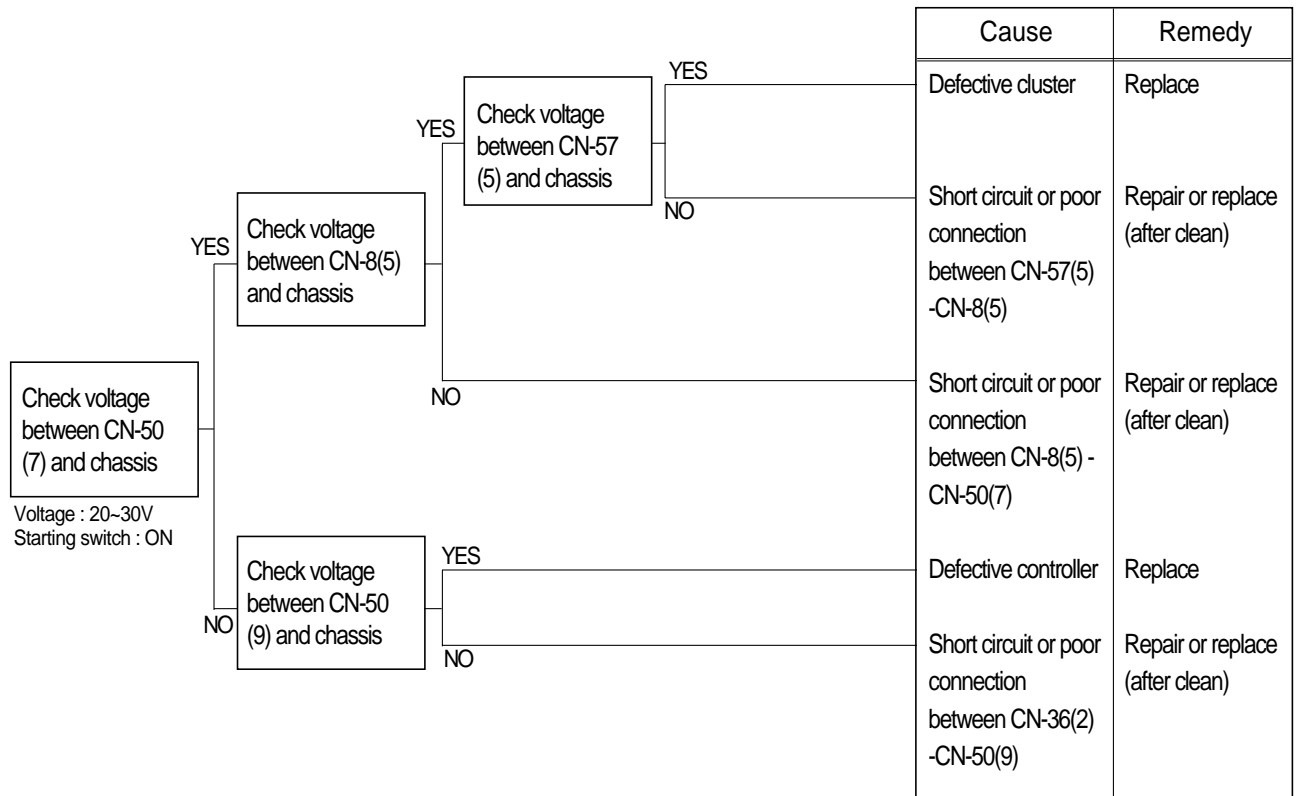


## GROUP 3 ELECTRICAL SYSTEM

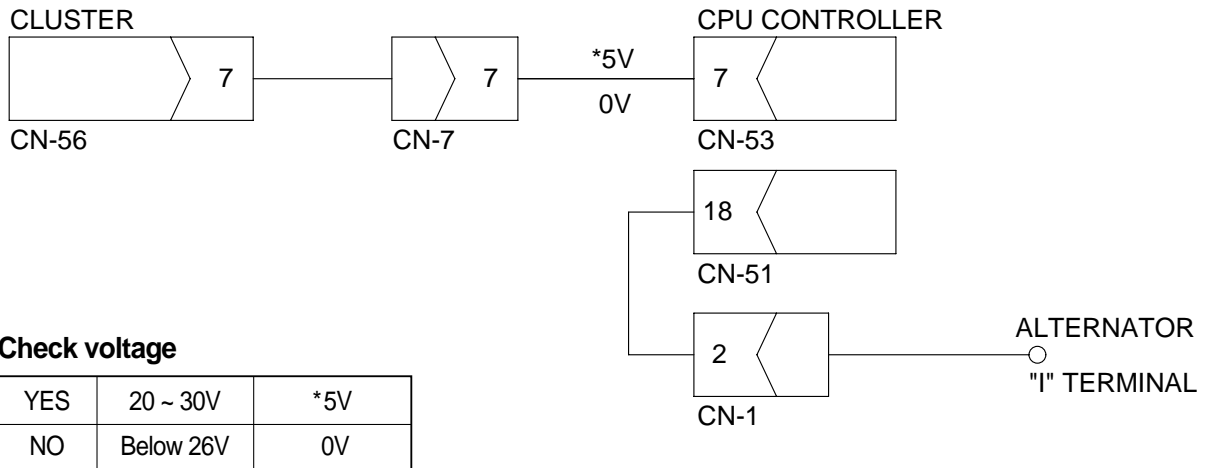
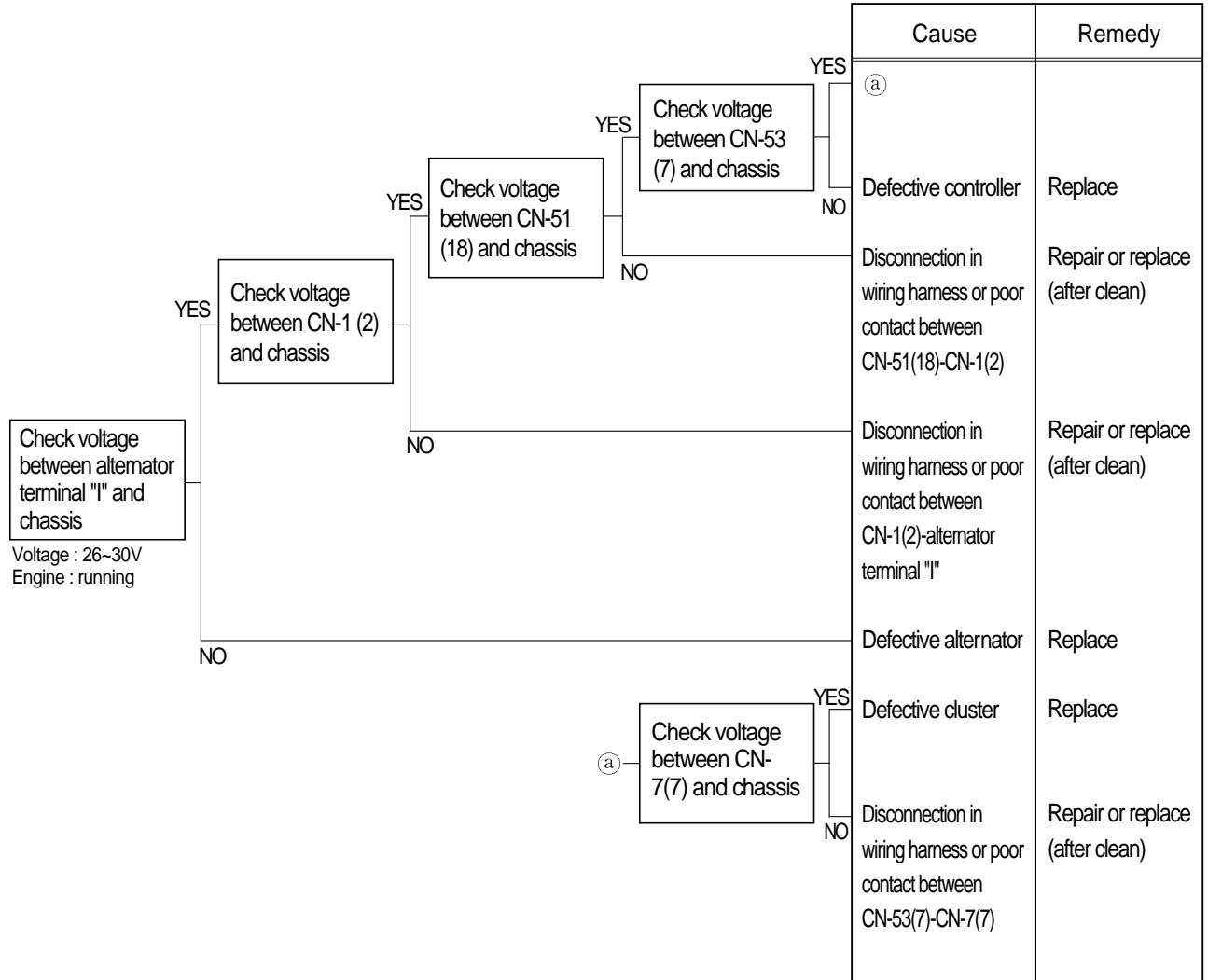
### 1. WHEN STARTING SWITCH IS TURNED ON, MONITOR PANEL DISPLAY DOES NOT APPEAR

- Before disconnecting the connector, always turn the starting switch OFF.
- Before carrying out below procedure, check all the related connectors are properly inserted and the fuse No. 1(CPU) is not blown out.
- After checking, connect the disconnected connectors again immediately unless otherwise specified.



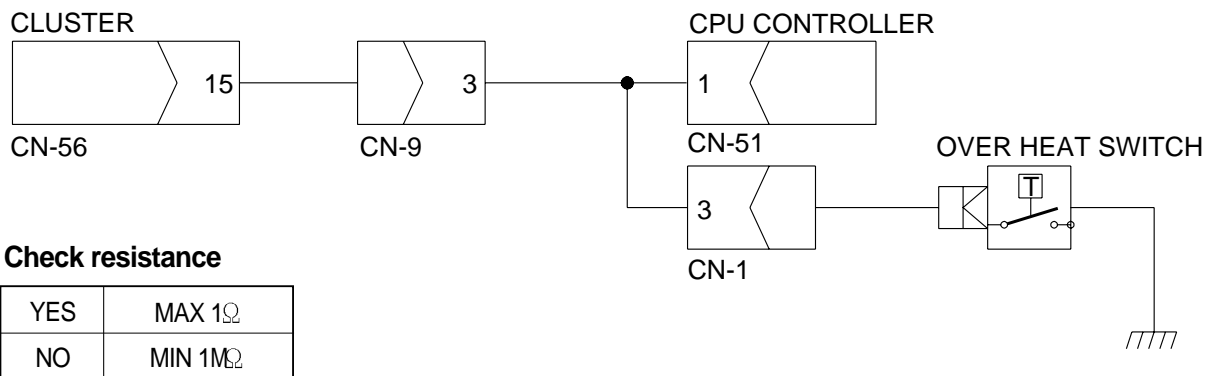
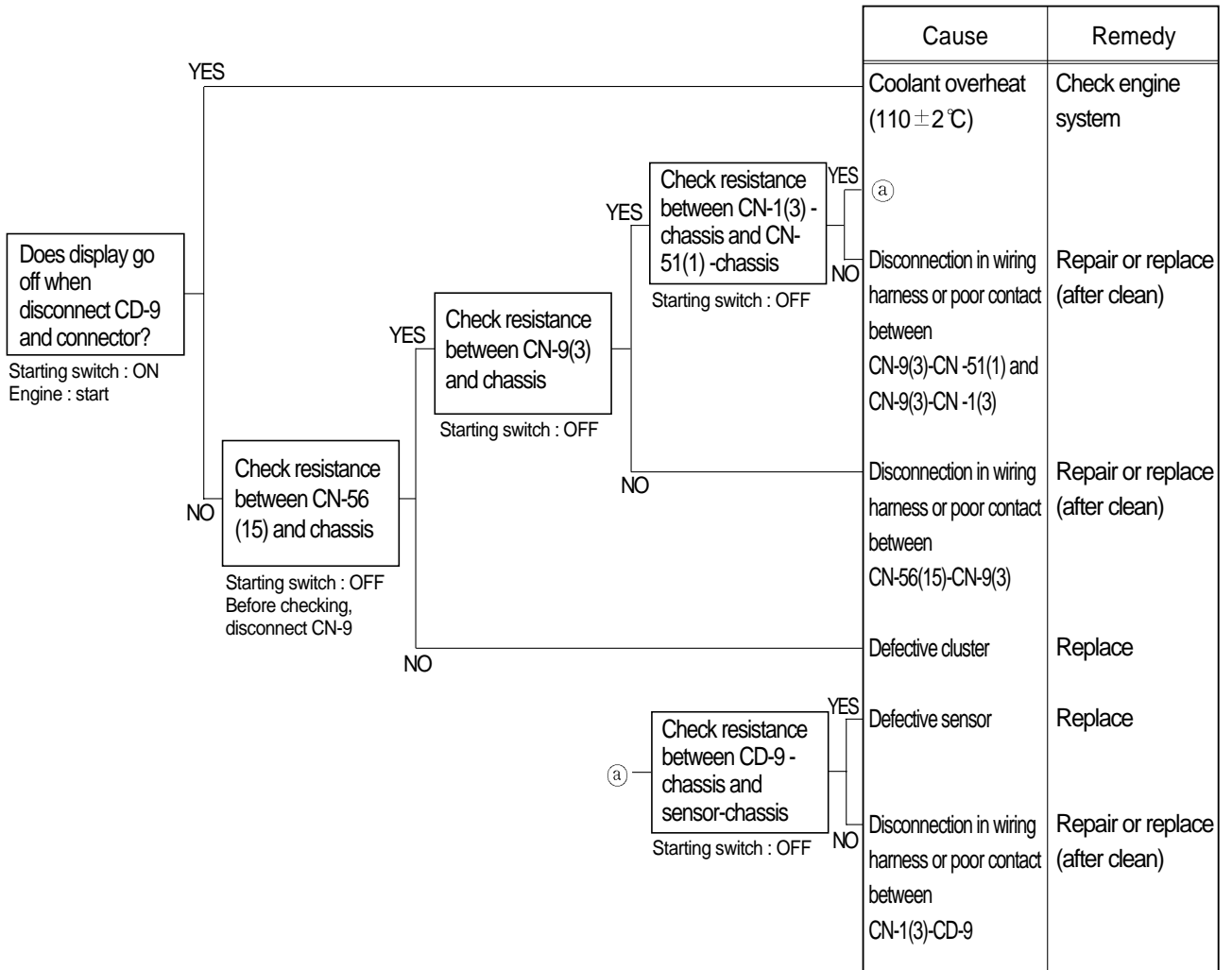
## 2. BATTERY CHARGING LAMP LIGHTS UP(Engine is started)

- Before disconnecting the connector, always turn the starting switch OFF.
- Before carrying out below procedure, check all the related connectors are properly inserted.
- After checking, connect the disconnected connectors again immediately unless otherwise specified.



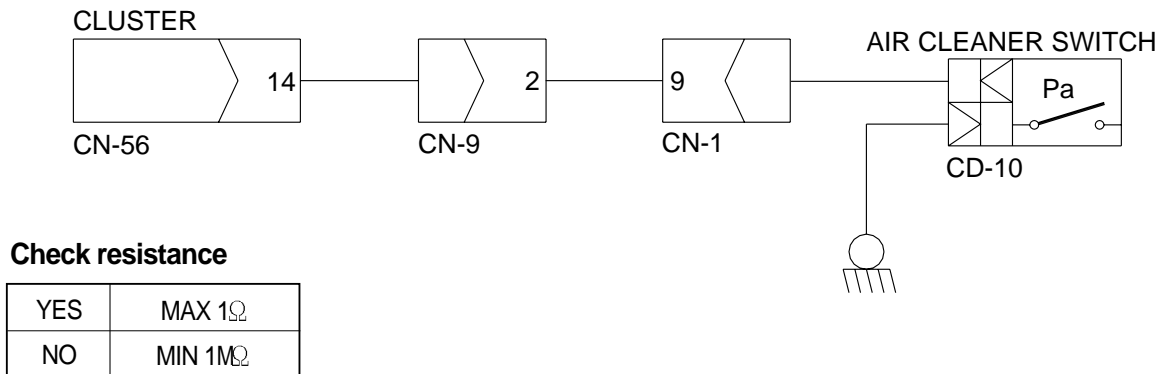
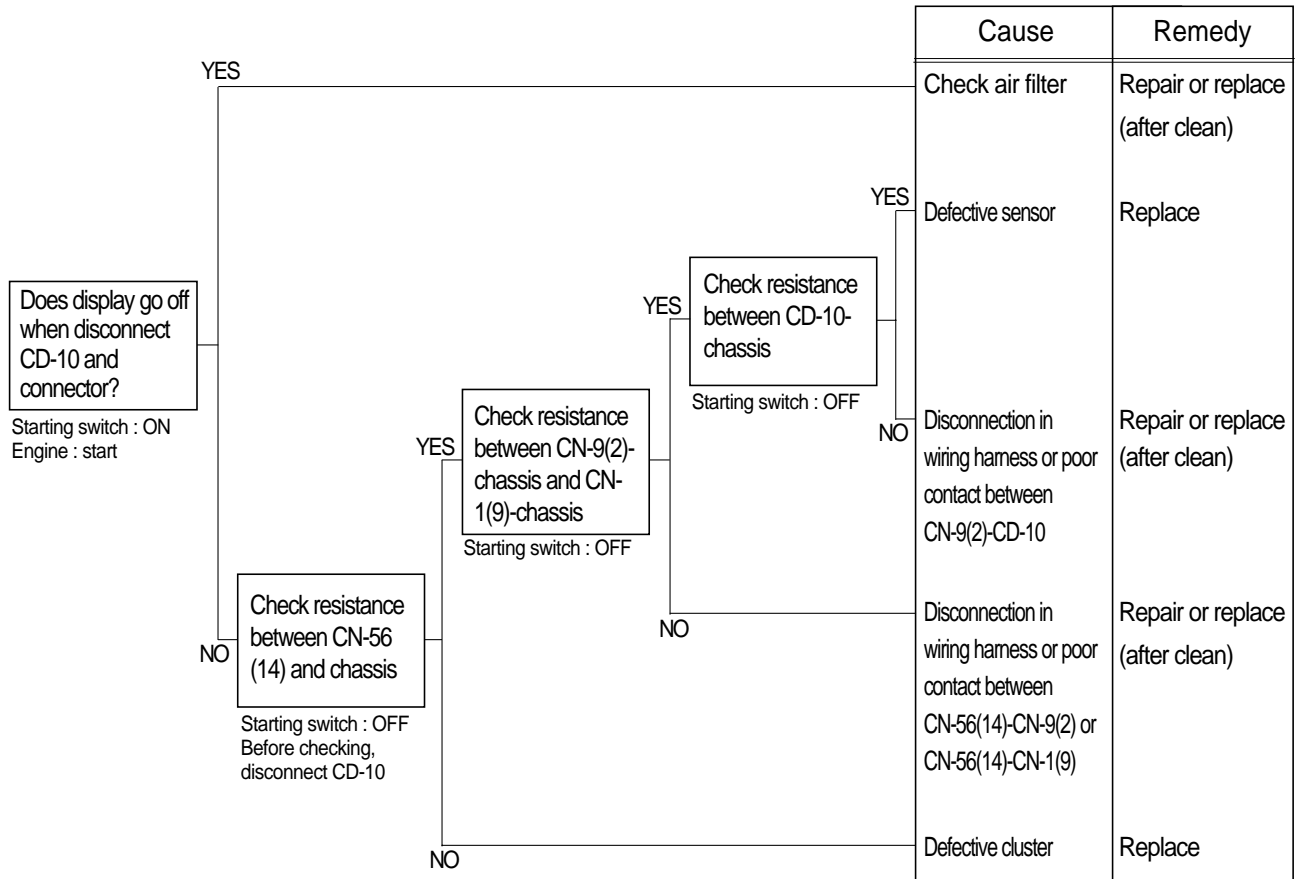
### 3. WHEN COOLANT OVERHEAT LAMP LIGHTS UP(Engine is started)

- Before disconnecting the connector, always turn the starting switch OFF.
- Before carrying out below procedure, check all the related connectors are properly inserted.
- After checking, connect the disconnected connectors again immediately unless otherwise specified.



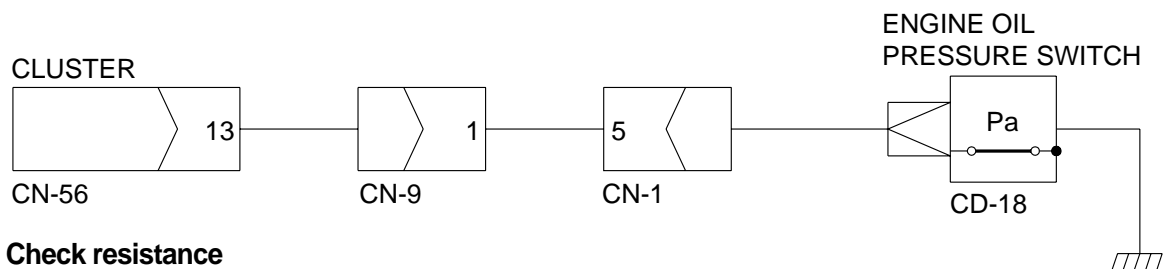
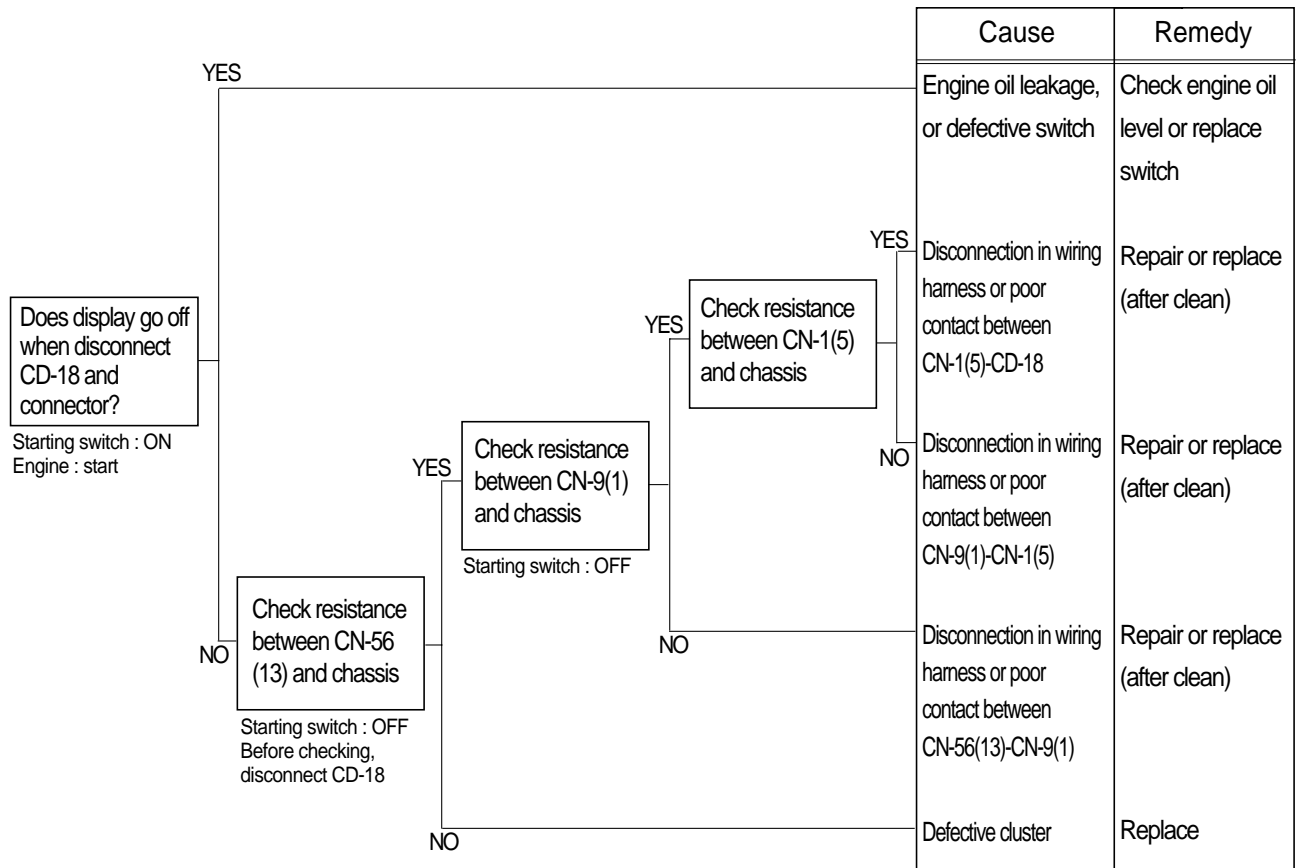
#### 4. WHEN AIR CLEANER LAMP LIGHTS UP(Engine is started)

- Before disconnecting the connector, always turn the starting switch OFF.
- Before carrying out below procedure, check all the related connectors are properly inserted.
- After checking, connect the disconnected connectors again immediately unless otherwise specified.



## 5. WHEN ENGINE OIL PRESSURE LAMP LIGHTS UP(Engine is started)

- Before disconnecting the connector, always turn the starting switch OFF.
- Before carrying out below procedure, check all the related connectors are properly inserted.
- After checking, connect the disconnected connectors again immediately unless otherwise specified.

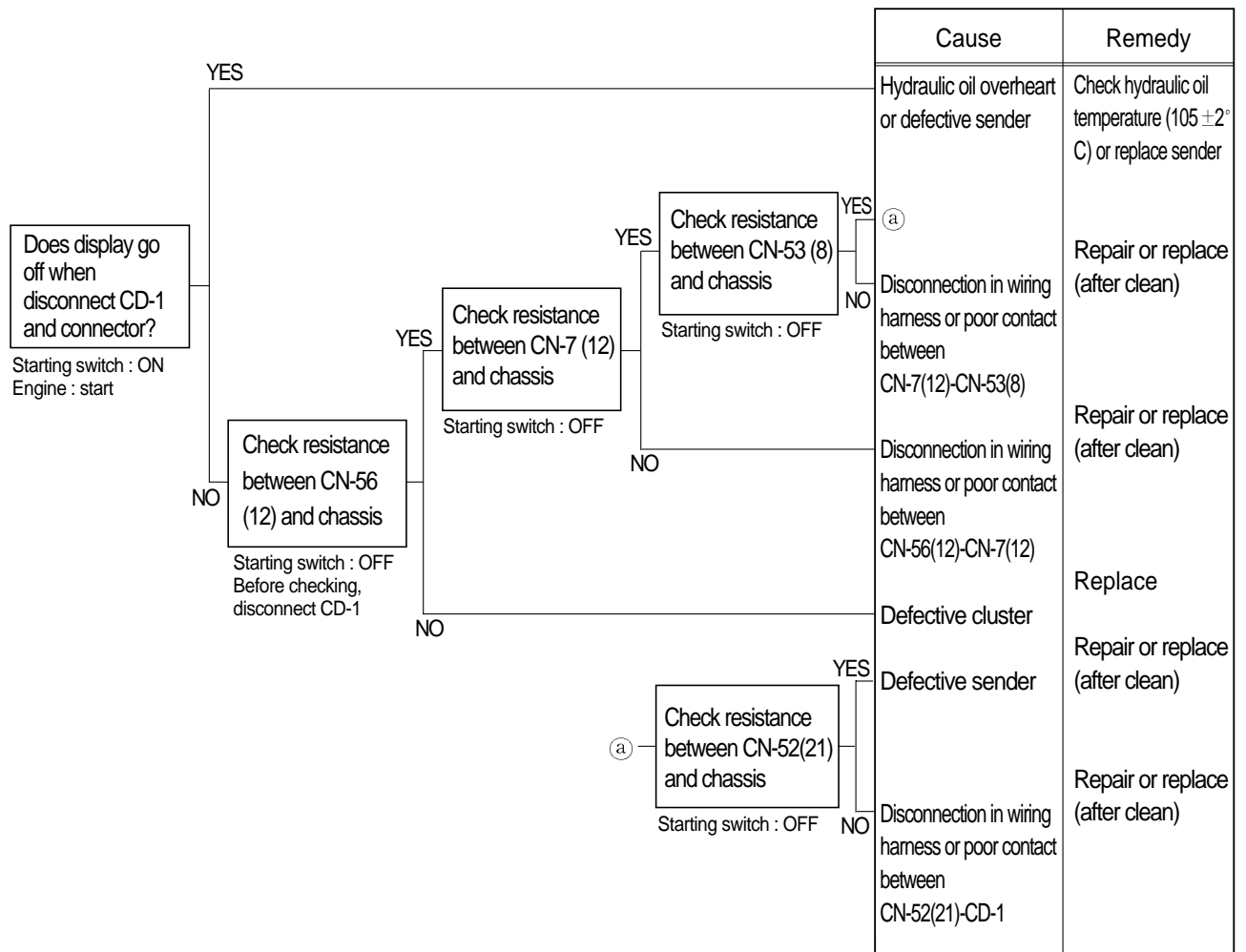


### Check resistance

YES	MAX 1Ω
NO	MIN 1MΩ

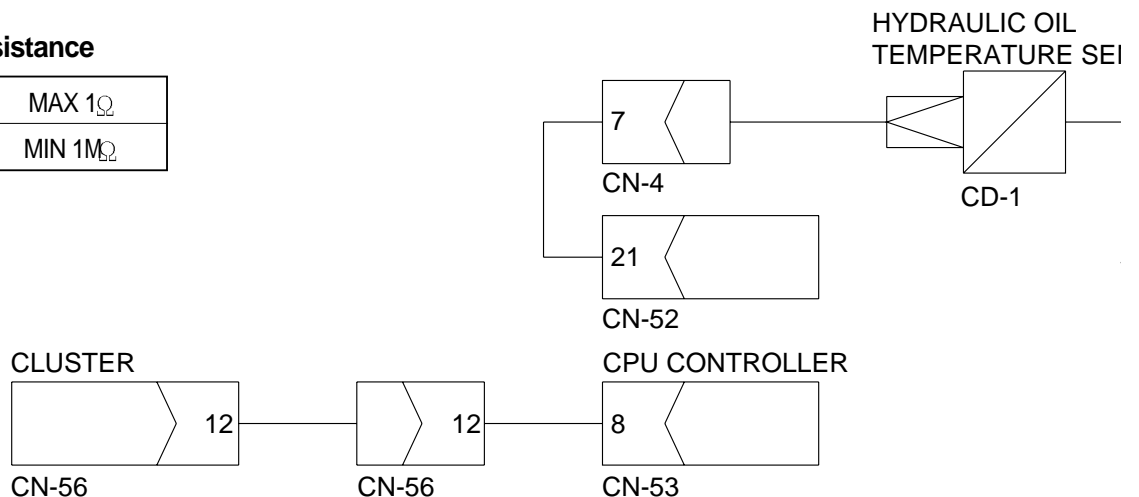
## 6. WHEN HYDRAULIC OIL TEMPERATURE LAMP LIGHTS UP(Engine is started)

- Before disconnecting the connector, always turn the starting switch OFF.
- Before carrying out below procedure, check all the related connectors are properly inserted.
- After checking, connect the disconnected connectors again immediately unless otherwise specified.



### Check resistance

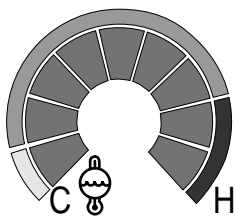
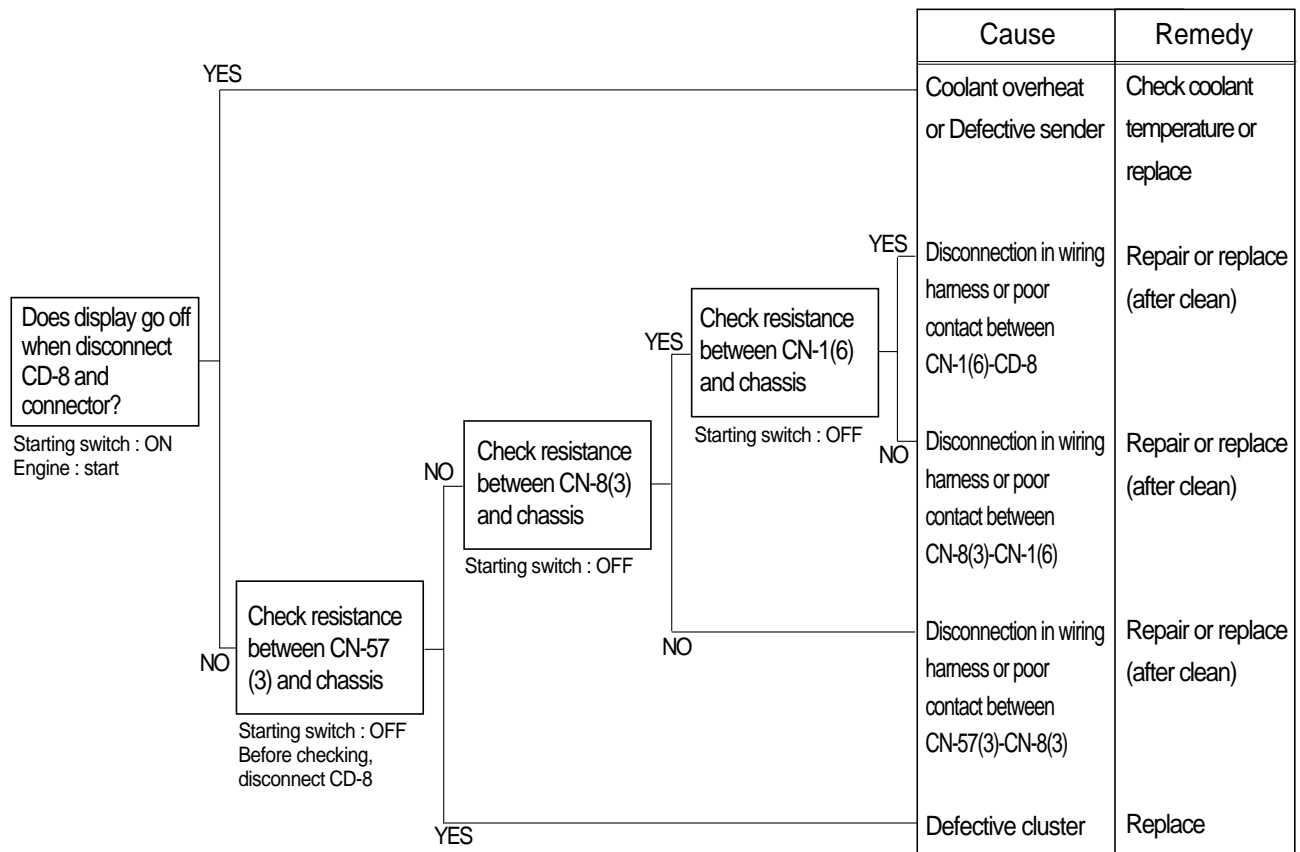
YES	MAX $1\Omega$
NO	MIN $1M\Omega$



## 7. WHEN COOLANT TEMPERATURE GAUGE DOES NOT OPERATE

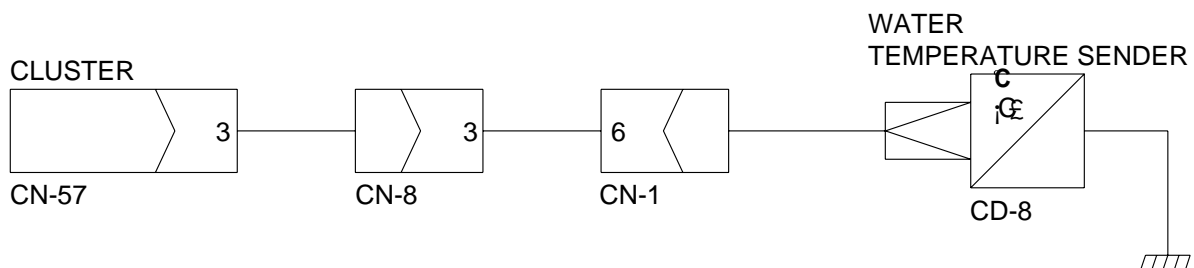
### (Check coolant temperature lamp ON/OFF)

- Before disconnecting the connector, always turn the starting switch OFF.
- Before carrying out below procedure, check all the related connectors are properly inserted.
- After checking, connect the disconnected connectors again immediately unless otherwise specified.



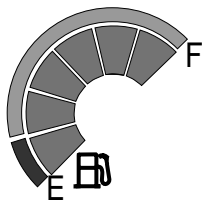
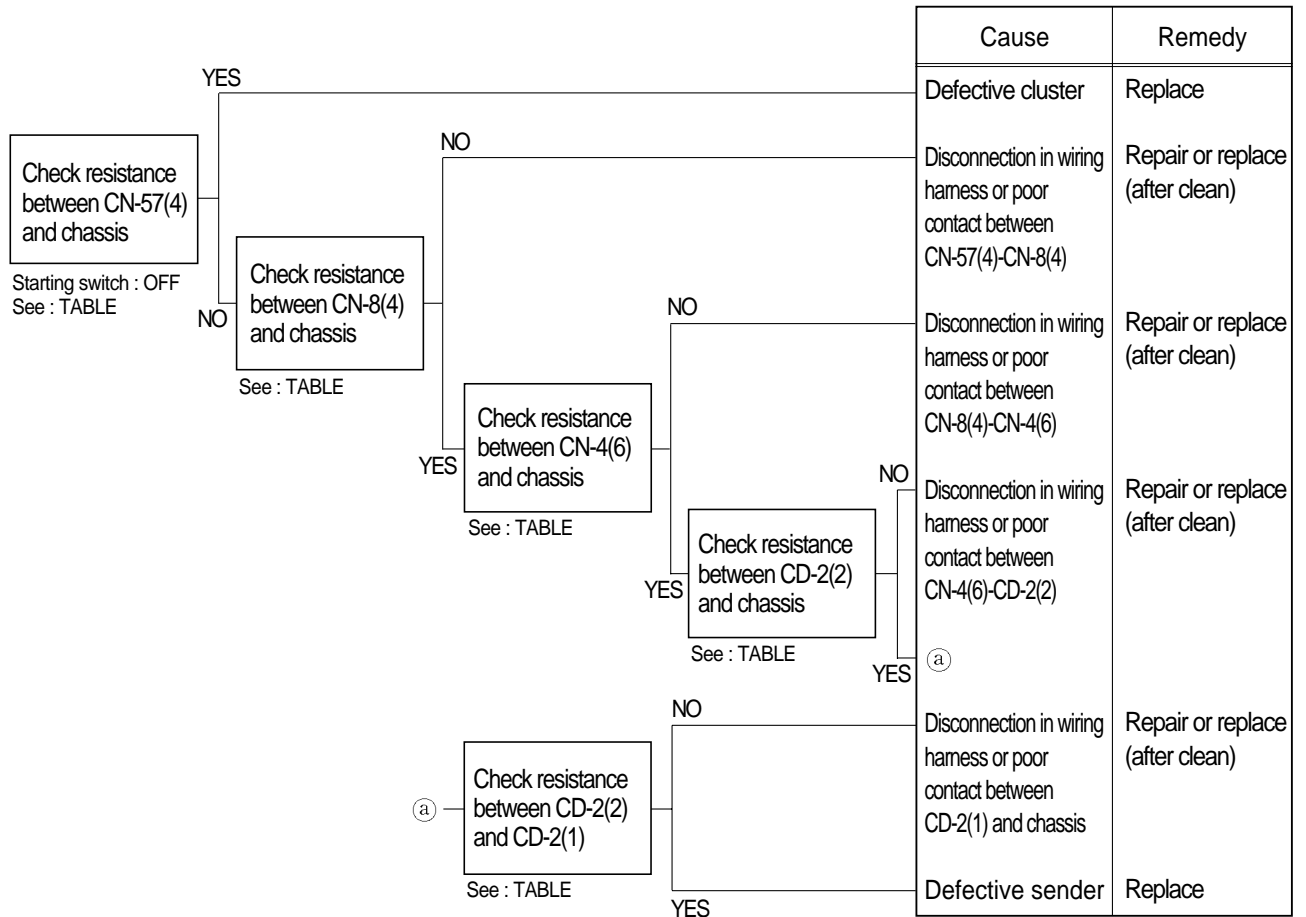
Check table

Temperature	50 °C	80 °C	100 °C	120 °C
Item	50 °C	80 °C	100 °C	120 °C
Unit resistance(Ω)	153.9	51.9	27.4	16.1
Tolerance	+25, -20	+4.9, -1.2	+1.9, -1.2	±1.2



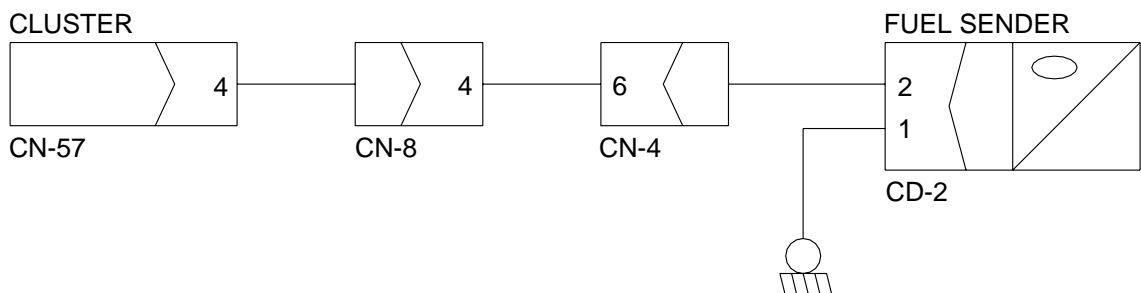
## 8. WHEN FUEL GAUGE DOES NOT OPERATE(Check warning lamp ON/OFF)

- Before disconnecting the connector, always turn the starting switch OFF.
- Before carrying out below procedure, check all the related connectors are properly inserted.
- After checking, connect the disconnected connectors again immediately unless otherwise specified.



Check table

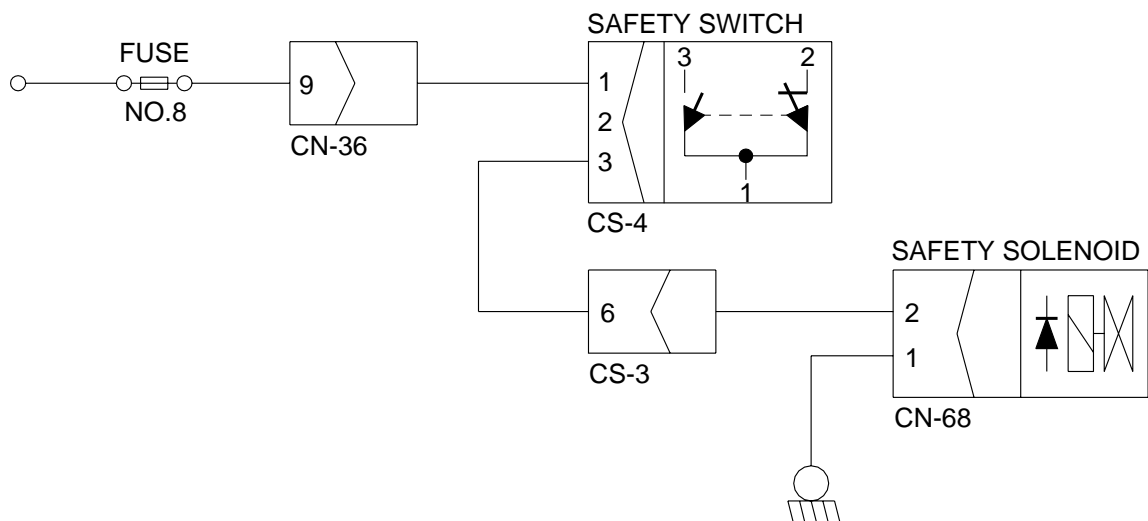
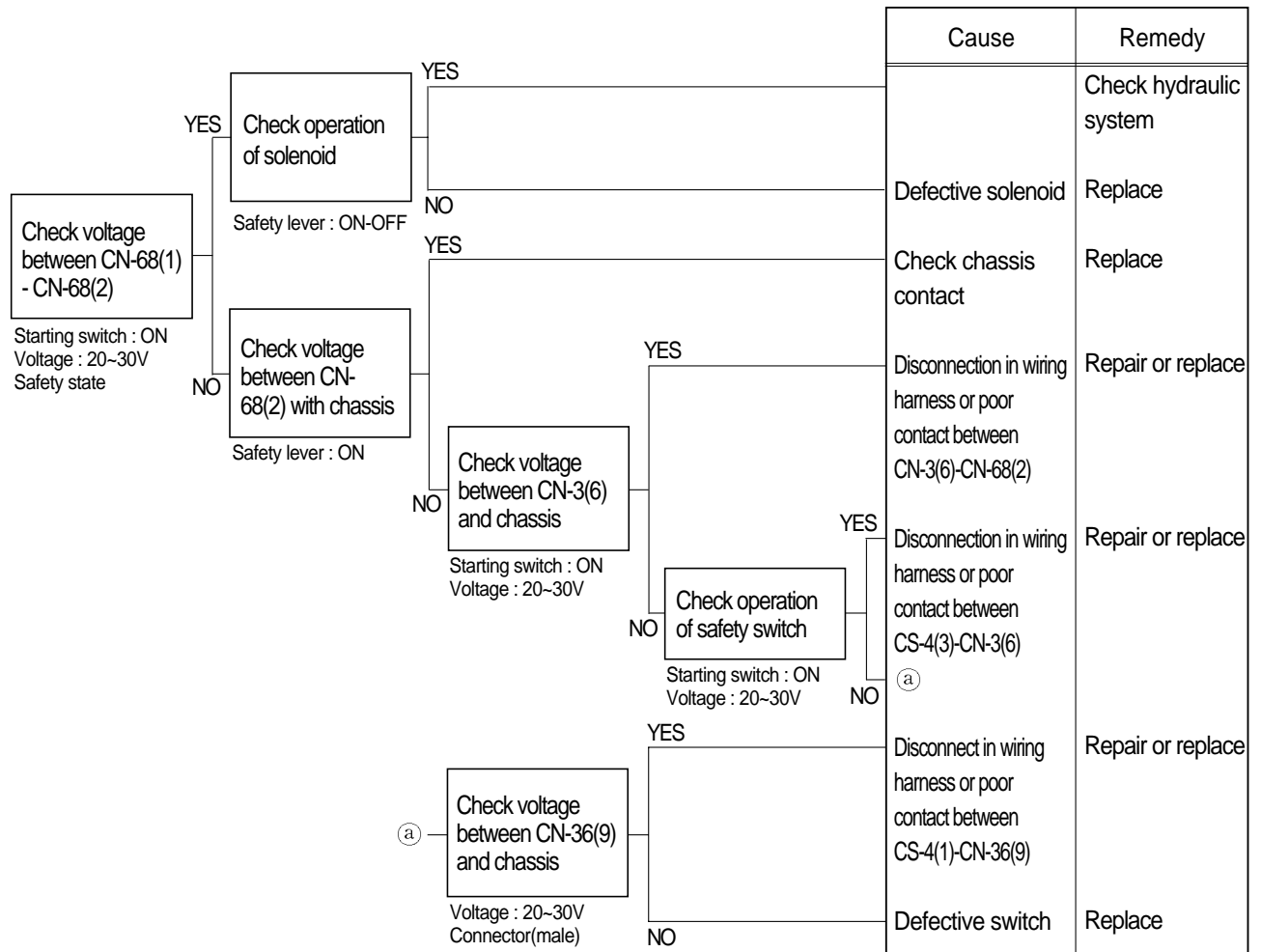
Level	Empty	1/2	Full
Item			
Unit resistance( $\Omega$ )	110	32.5	3
Tolerance	$\pm 3$	$\pm 3$	$\pm 2$





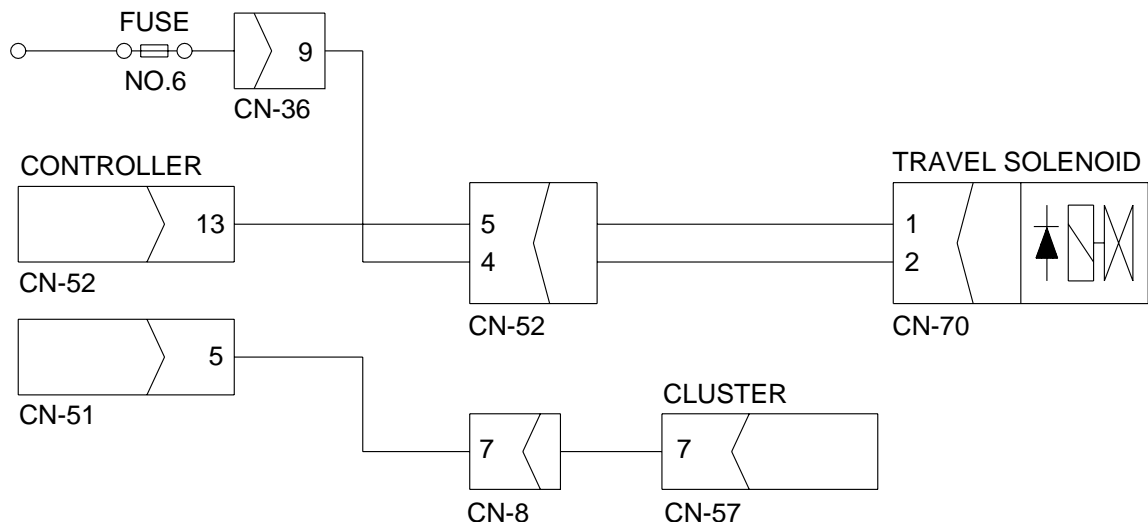
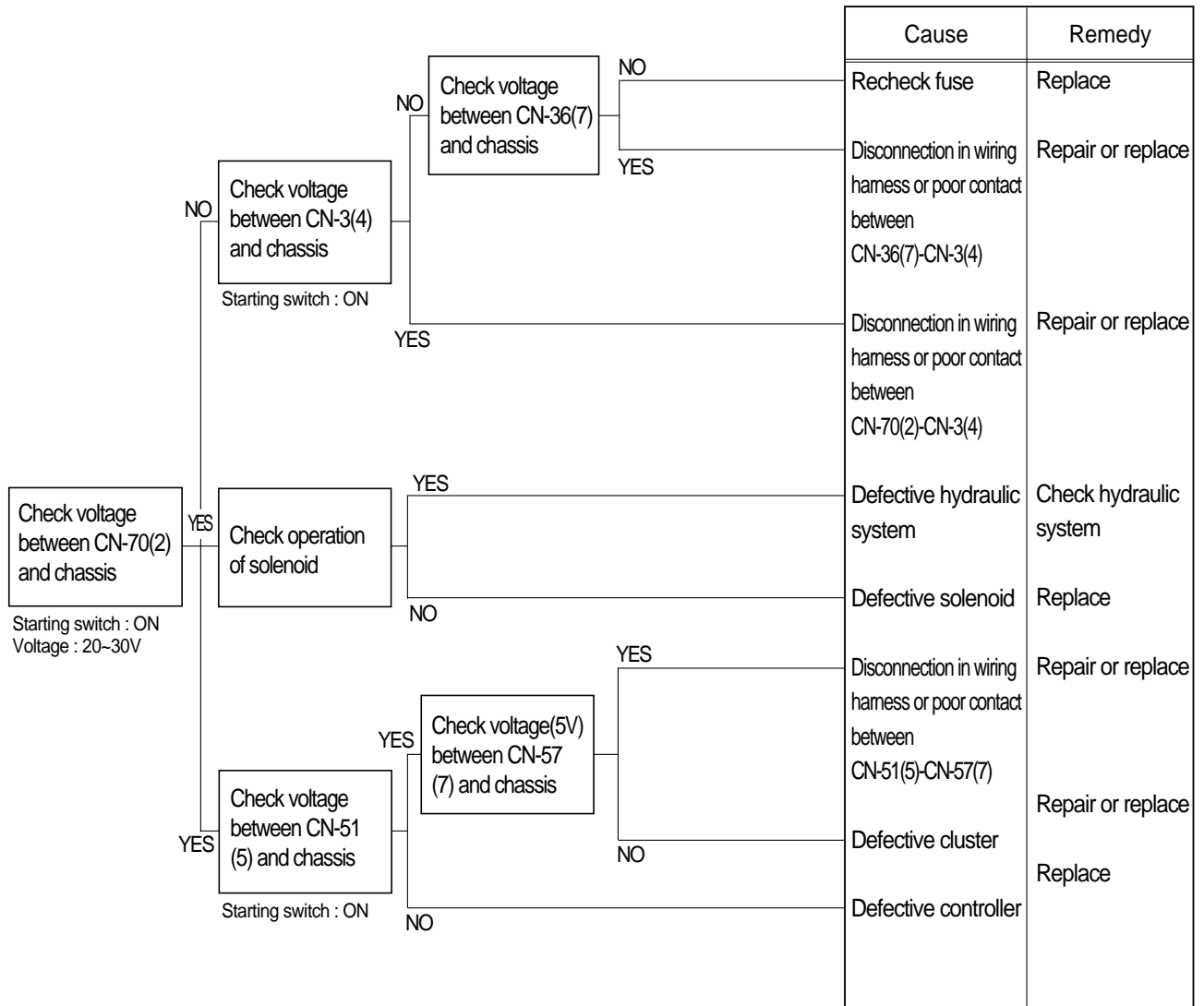
## 9. WHEN SAFETY SOLENOID DOES NOT OPERATE

- Before disconnecting the connector, always turn the starting switch OFF.
- Before carrying out below procedure, check all the related connectors are properly inserted and the fuse No.8 is not blown out.
- After checking, connect the disconnected connectors again immediately unless otherwise specified.



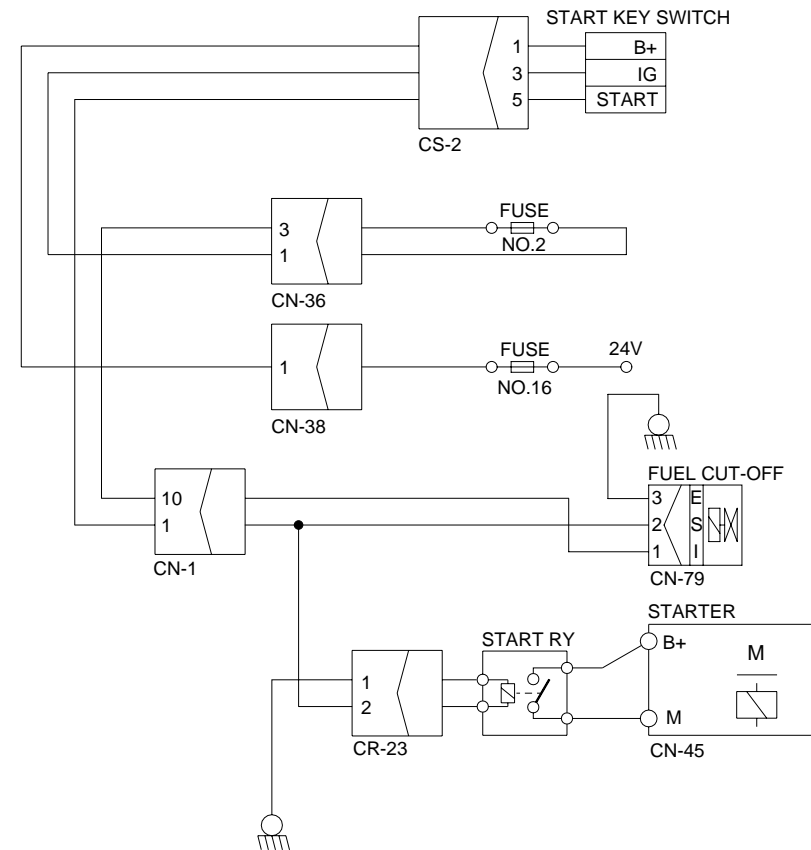
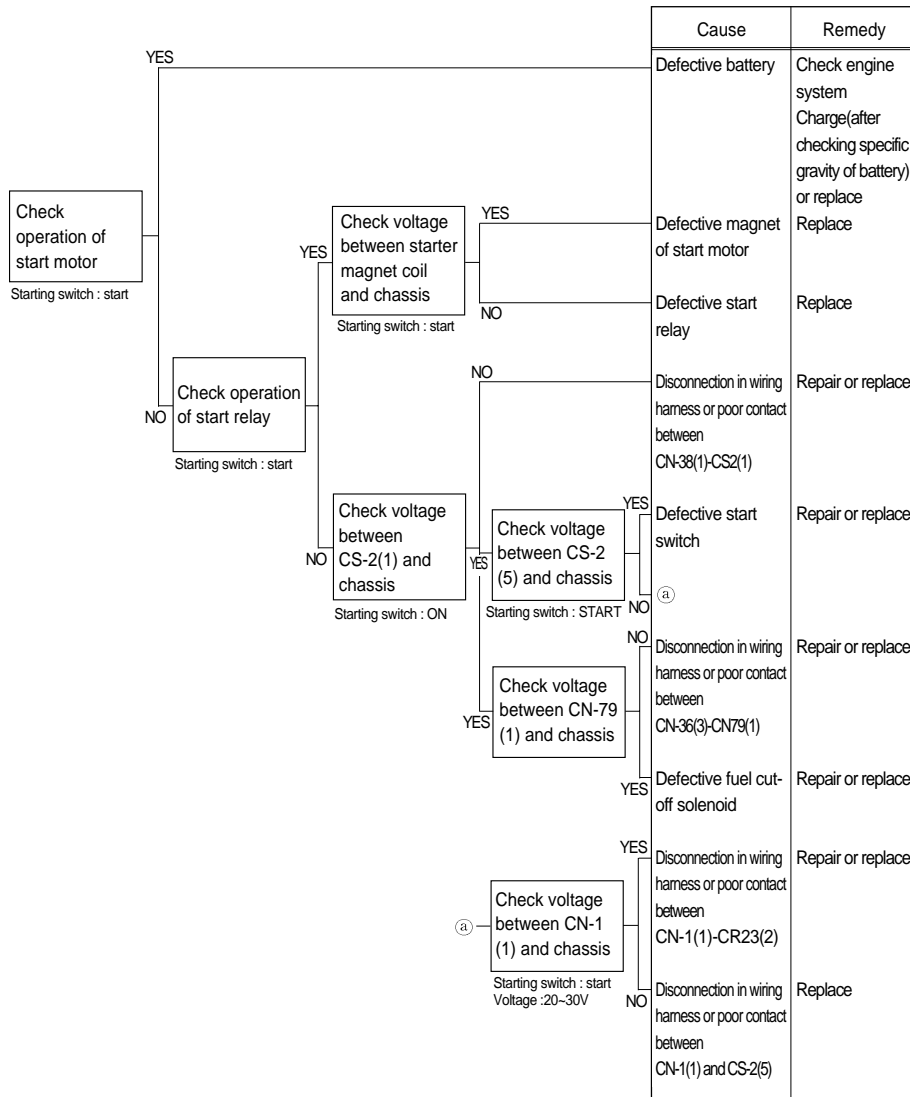
## 10. WHEN TRAVEL SPEED 1, 2 DOES NOT OPERATE

- Before disconnecting the connector, always turn the starting switch OFF.
- Before carrying out below procedure, check all the related connectors are properly inserted and the fuse No.6 is not blown out.
- After checking, connect the disconnected connectors again immediately unless otherwise specified.



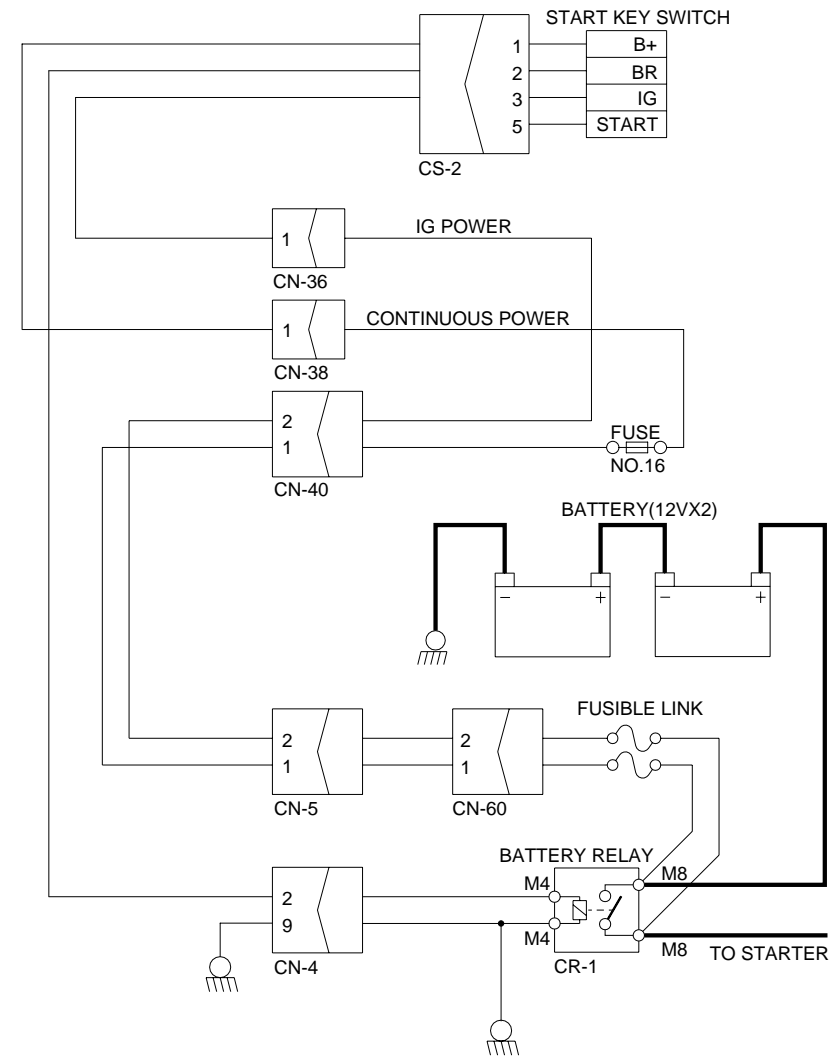
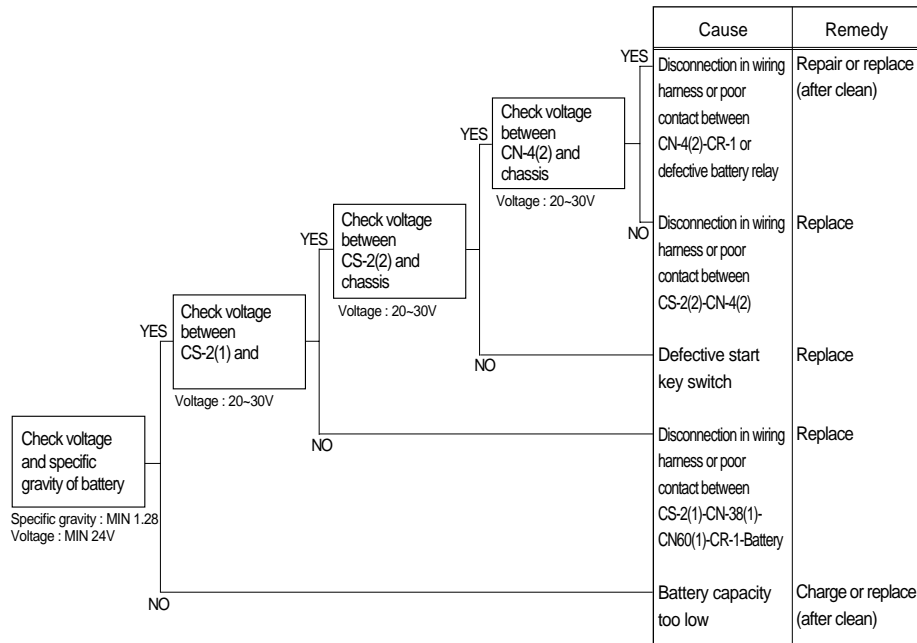
## 11. WHEN ENGINE DOES NOT START

- Check supply of the power at fuel stop solenoid while starting switch is ON.
- Before disconnecting the connector, always turn the starting switch OFF.
- Before carrying out below procedure, check all the related connectors are properly inserted and the fuse No.2 and No.16 are not blown out.
- After checking, connect the disconnected connectors again immediately unless otherwise specified.



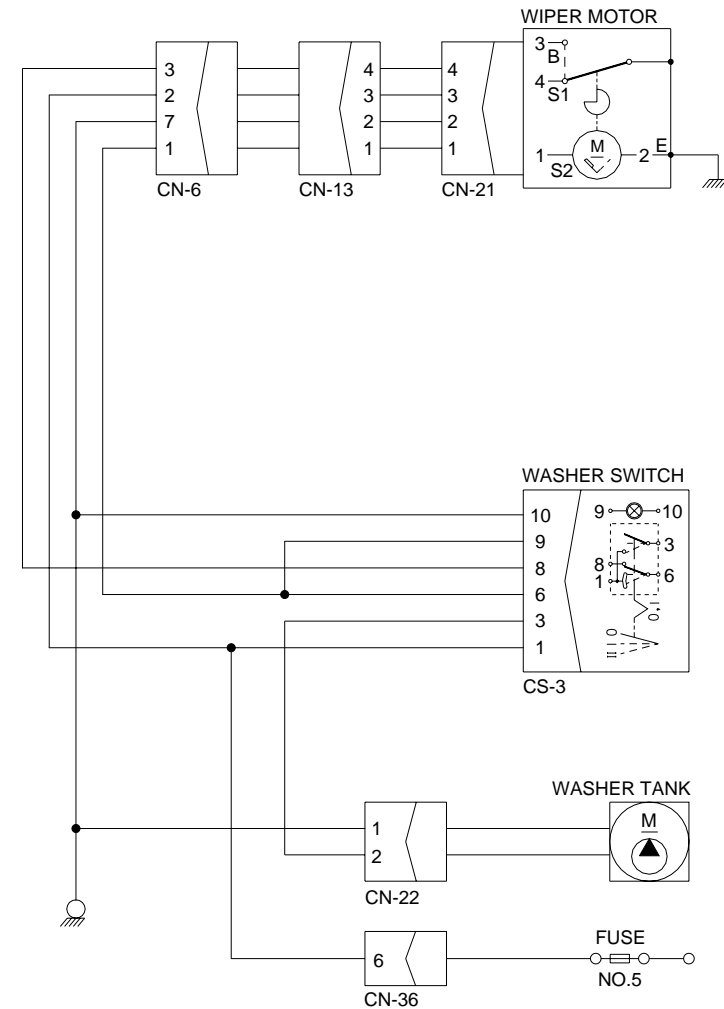
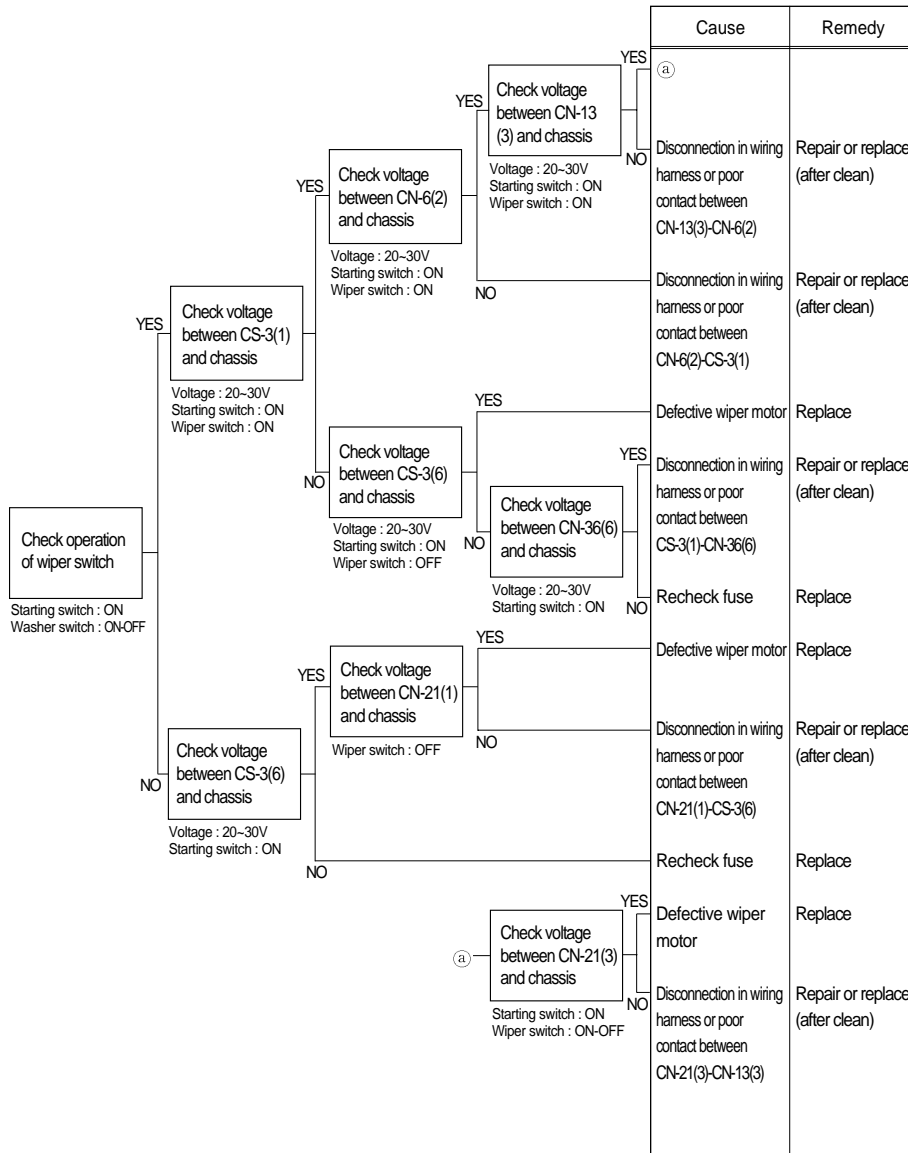
## 12. WHEN STARTING SWITCH ON DOES NOT OPERATE

- Before disconnecting the connector, always turn the starting switch OFF.
- Before carrying out below procedure, check all the related connectors are properly inserted and the fusible links and fuses No.16 are not blown out.
- After checking, connect the disconnected connectors again immediately unless otherwise specified.



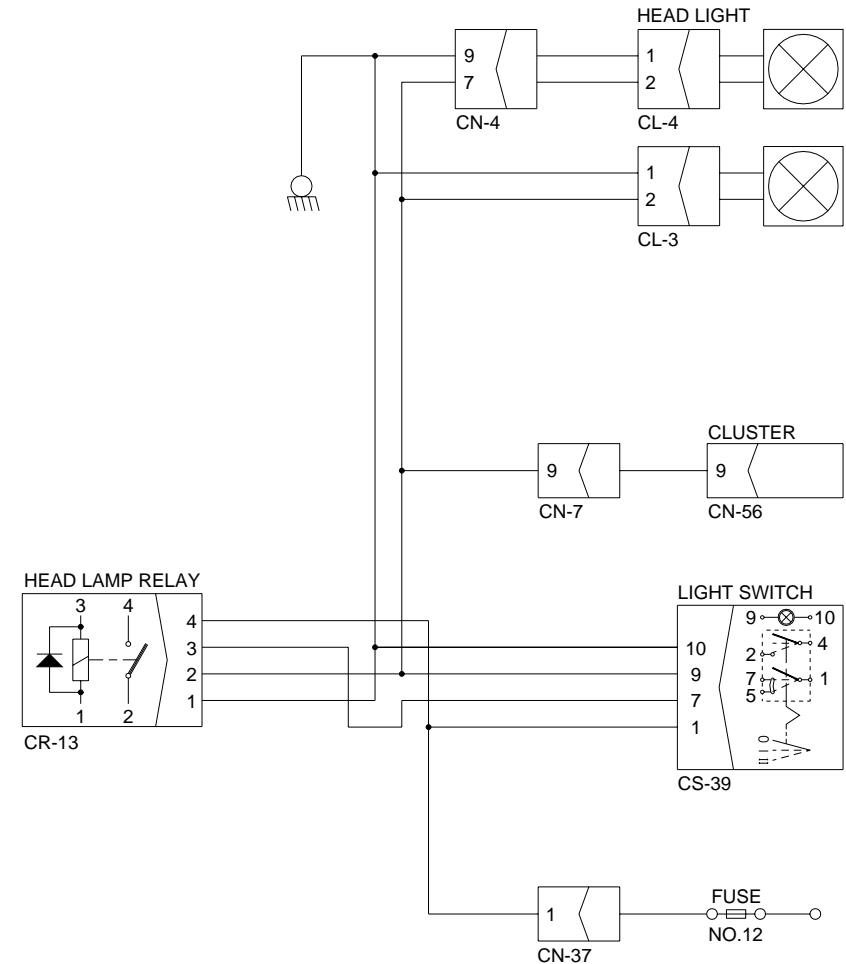
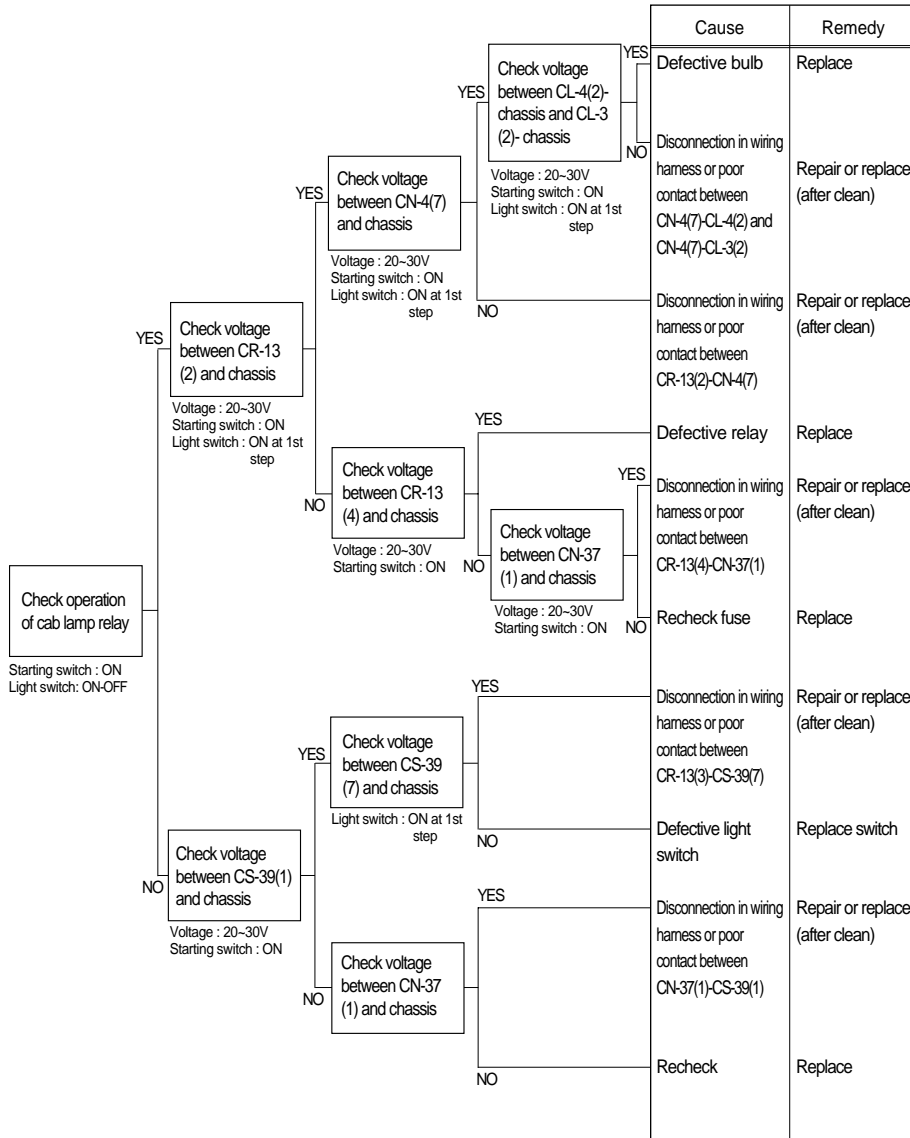
### 13. WHEN STARTING SWITCH IS TURNED ON, WIPER MOTOR DOES NOT OPERATE

- Before disconnecting the connector, always turn the starting switch OFF.
- Before carrying out below procedure, check all the related connectors are properly inserted and the fuse No.5 is not blown out.
- After checking, connect the disconnected connectors again immediately unless otherwise specified.



### 14. WHEN STARTING SWITCH IS TURNED ON, HEAD LAMP DOES NOT LIGHT UP

- Before disconnecting the connector, always turn the starting switch OFF.
- Before carrying out below procedure, check all the related connectors are properly inserted and the fuse No.12 is not blown out.
- After checking, connect the disconnected connectors again immediately unless otherwise specified.



### 15. WHEN STARTING SWITCH IS TURNED ON, WORK LAMP DOES NOT LIGHTS UP

- Before disconnecting the connector, always turn the starting switch OFF.
- Before carrying out below procedure, check all the related connectors are properly inserted and the fuse No.13 is not blown out.
- After checking, connect the disconnected connectors again immediately unless otherwise specified.

