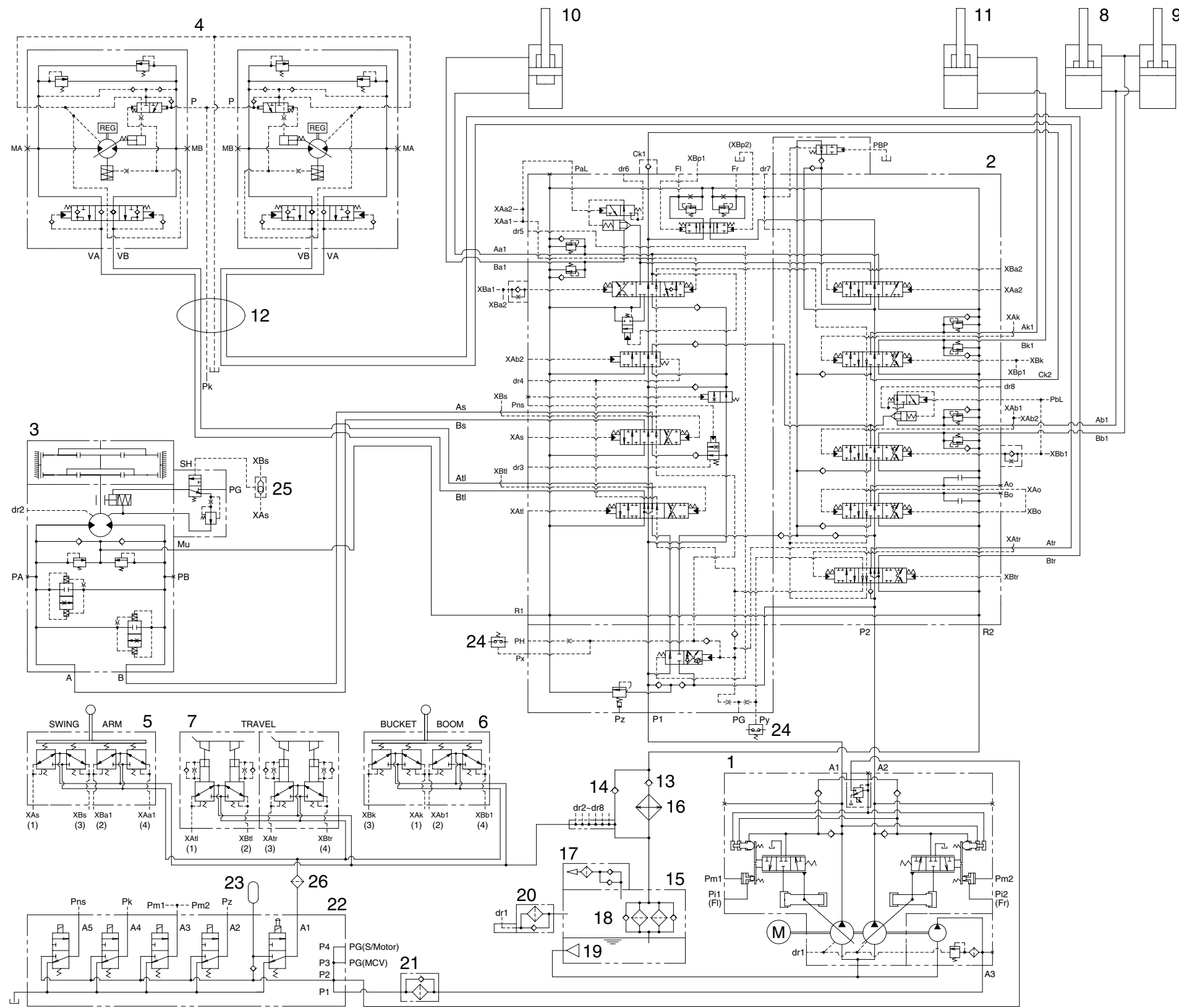


SECTION 3 HYDRAULIC SYSTEM

Group 1 Hydraulic Circuit	3-1
Group 2 Main Circuit	3-2
Group 3 Pilot Circuit	3-5
Group 4 Single Operation	3-13
Group 5 Combined Operation	3-23

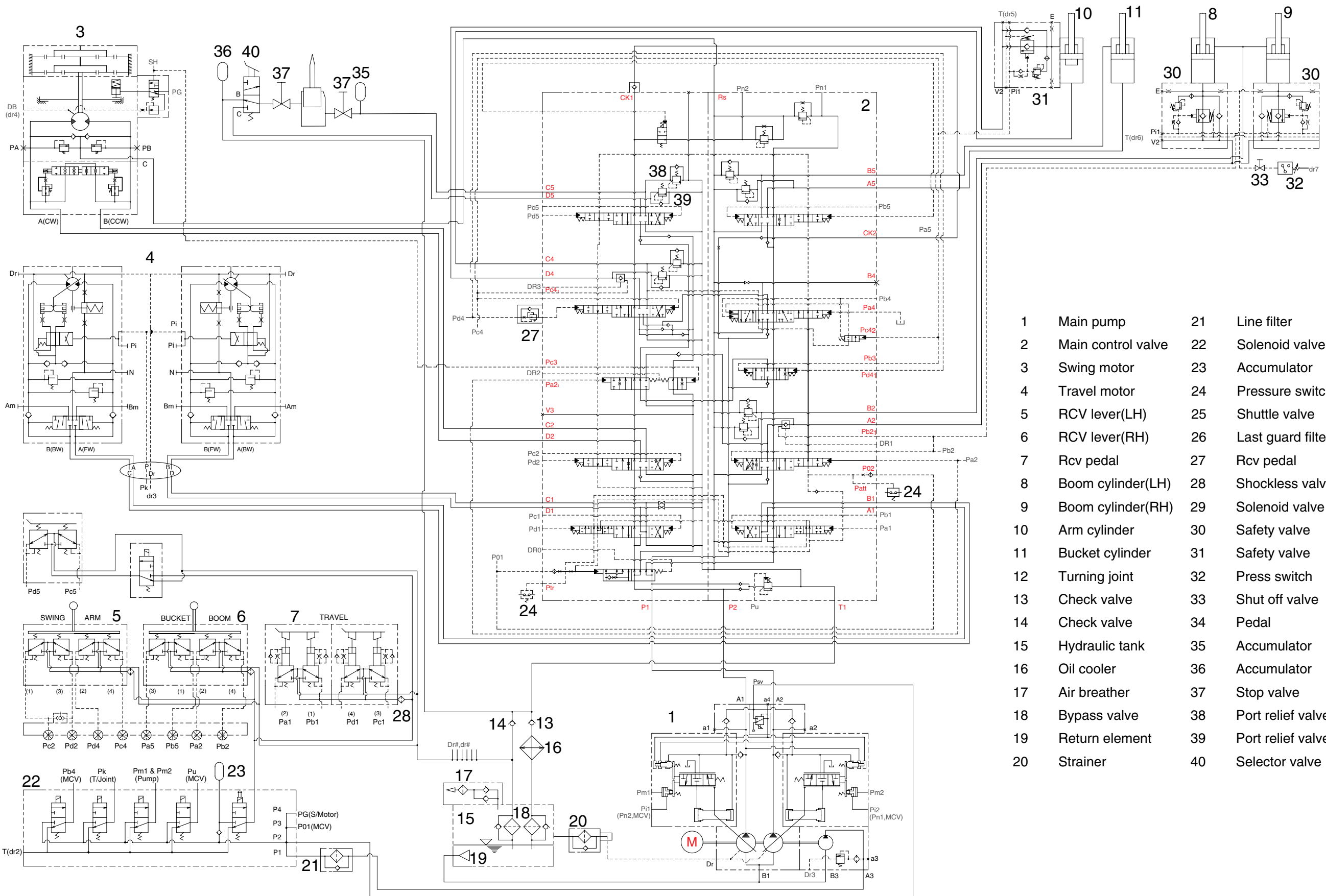
GROUP 1 HYDRAULIC CIRCUIT(-#0119)



- 1 Main pump
- 2 Main control valve
- 3 Swing motor
- 4 Travel motor
- 5 RCV lever(LH)
- 6 RCV lever(RH)
- 7 RCV pedal
- 8 Boom cylinder(LH)
- 9 Boom cylinder(RH)
- 10 Arm cylinder
- 11 Bucket cylinder
- 12 Turning joint
- 13 Check valve
- 14 Check valve
- 15 Hydraulic tank
- 16 Oil cooler
- 17 Air breather
- 18 Bypass valve
- 19 Strainer
- 20 Spin filter
- 21 Line filter
- 22 Solenoid valve
- 23 Accumulator
- 24 Pressure switch
- 25 Shuttle valve
- 26 Last guard filter

SECTION 3 HYDRAULIC SYSTEM

GROUP 1 HYDRAULIC CIRCUIT(#0120-)



- | | | | |
|----|--------------------|----|-------------------|
| 1 | Main pump | 21 | Line filter |
| 2 | Main control valve | 22 | Solenoid valve |
| 3 | Swing motor | 23 | Accumulator |
| 4 | Travel motor | 24 | Pressure switch |
| 5 | RCV lever(LH) | 25 | Shuttle valve |
| 6 | RCV lever(RH) | 26 | Last guard filter |
| 7 | Rcv pedal | 27 | Rcv pedal |
| 8 | Boom cylinder(LH) | 28 | Shockless valve |
| 9 | Boom cylinder(RH) | 29 | Solenoid valve |
| 10 | Arm cylinder | 30 | Safety valve |
| 11 | Bucket cylinder | 31 | Safety valve |
| 12 | Turning joint | 32 | Press switch |
| 13 | Check valve | 33 | Shut off valve |
| 14 | Check valve | 34 | Pedal |
| 15 | Hydraulic tank | 35 | Accumulator |
| 16 | Oil cooler | 36 | Accumulator |
| 17 | Air breather | 37 | Stop valve |
| 18 | Bypass valve | 38 | Port relief valve |
| 19 | Return element | 39 | Port relief valve |
| 20 | Strainer | 40 | Selector valve |

29073HC30