

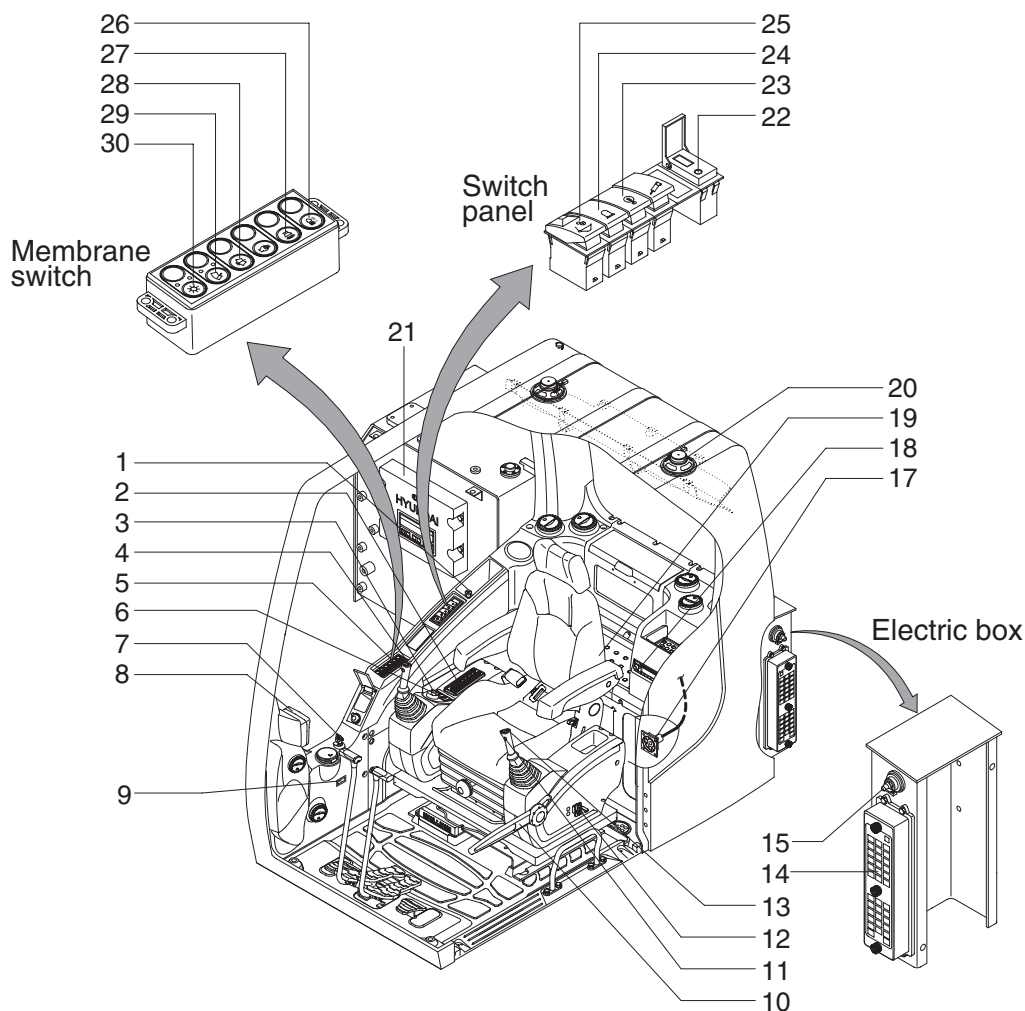
SECTION 4 ELECTRICAL SYSTEM

Group 1 Component Location	4-1
Group 2 Electrical Circuit	4-3
Group 3 Electrical Component Specification	4-38
Group 4 Connectors	4-46

SECTION 4 ELECTRICAL SYSTEM

GROUP 1 COMPONENT LOCATION

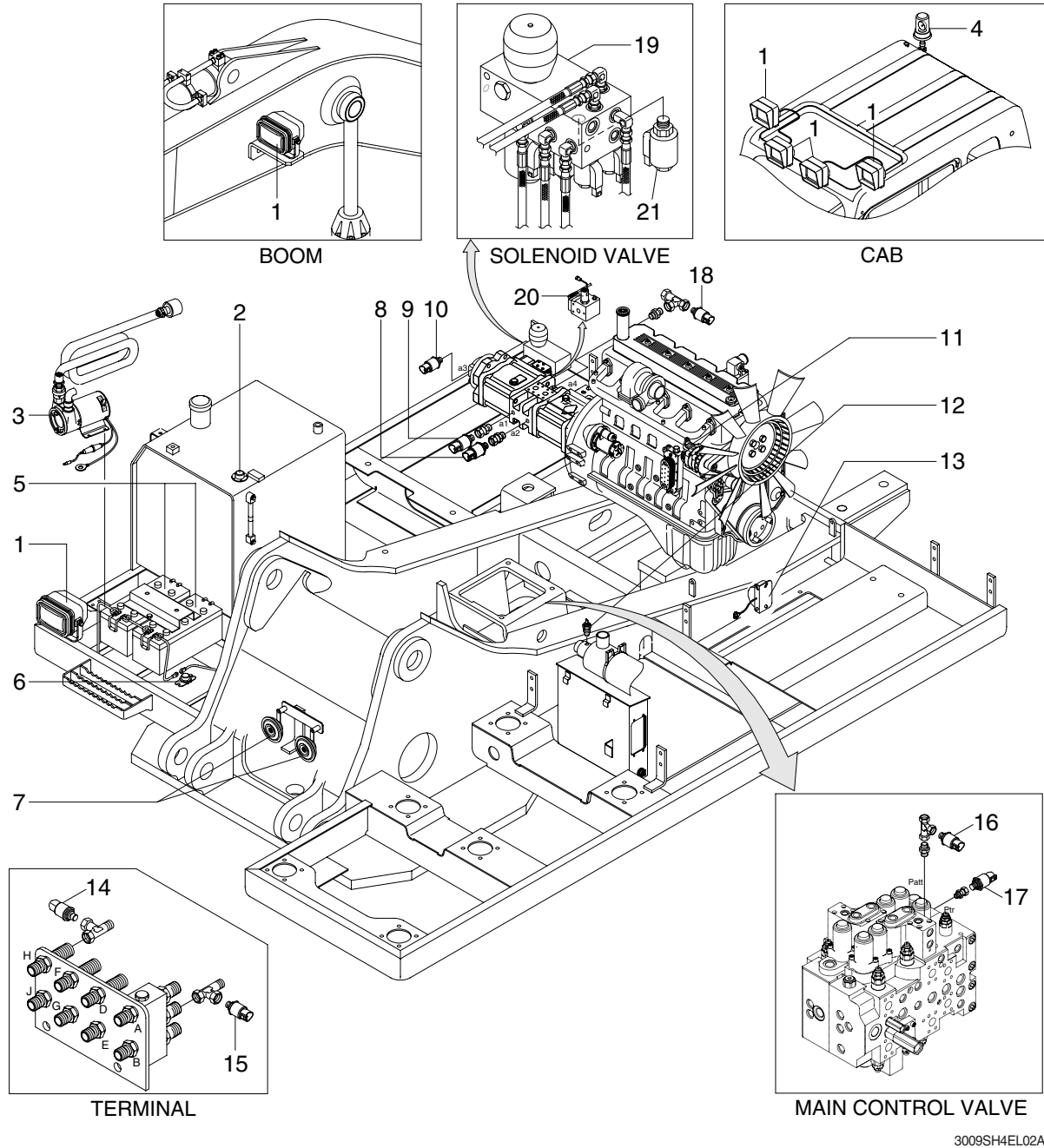
1. LOCATION 1



3009SH4EL01

- | | | |
|--------------------------------|---------------------------------|------------------------|
| 1 Cigar light | 11 Power max switch | 22 USB socket |
| 2 Aircon & heater switch panel | 12 Emergency engine stop switch | 23 Overload switch |
| 3 Accel dial switch | 13 One touch decel switch | 24 Beacon switch |
| 4 Horn switch | 14 Fuse box | 25 Quick clamp switch |
| 5 Breaker operation switch | 15 Master switch | 26 Cab light switch |
| 6 Air compressor switch | 17 RS232 service socket | 27 Travel alarm switch |
| 7 Starting switch | 18 Radio & USB player | 28 Washer switch |
| 8 Cluster | 19 Heated seat switch | 29 Wiper switch |
| 9 Service meter | 20 Speaker | 30 Main light switch |
| 10 Safety lever | 21 MCU | |

2. LOCATION 2



- | | | | | | |
|---|------------------|----|-------------------------|----|--------------------------|
| 1 | Lamp | 8 | P1 pressure sensor | 15 | Swing pressure sensor |
| 2 | Fuel sender | 9 | P2 pressure sensor | 16 | Attach pressure sensor |
| 3 | Fuel filler pump | 10 | P3 pressure sensor | 17 | Travel pressure sensor |
| 4 | Beacon lamp | 11 | Alternator | 18 | EPPR Pressure sensor |
| 5 | Battery | 12 | Air cleaner switch | 19 | Solenoid valve |
| 6 | Battery relay | 13 | Travel alarm buzzer | 20 | Pump EPPR valve |
| 7 | Horn | 14 | Boom up pressure sensor | 21 | Boom priority EPPR valve |

※ Cluster type 1 only : 10, 14, 15, 18