

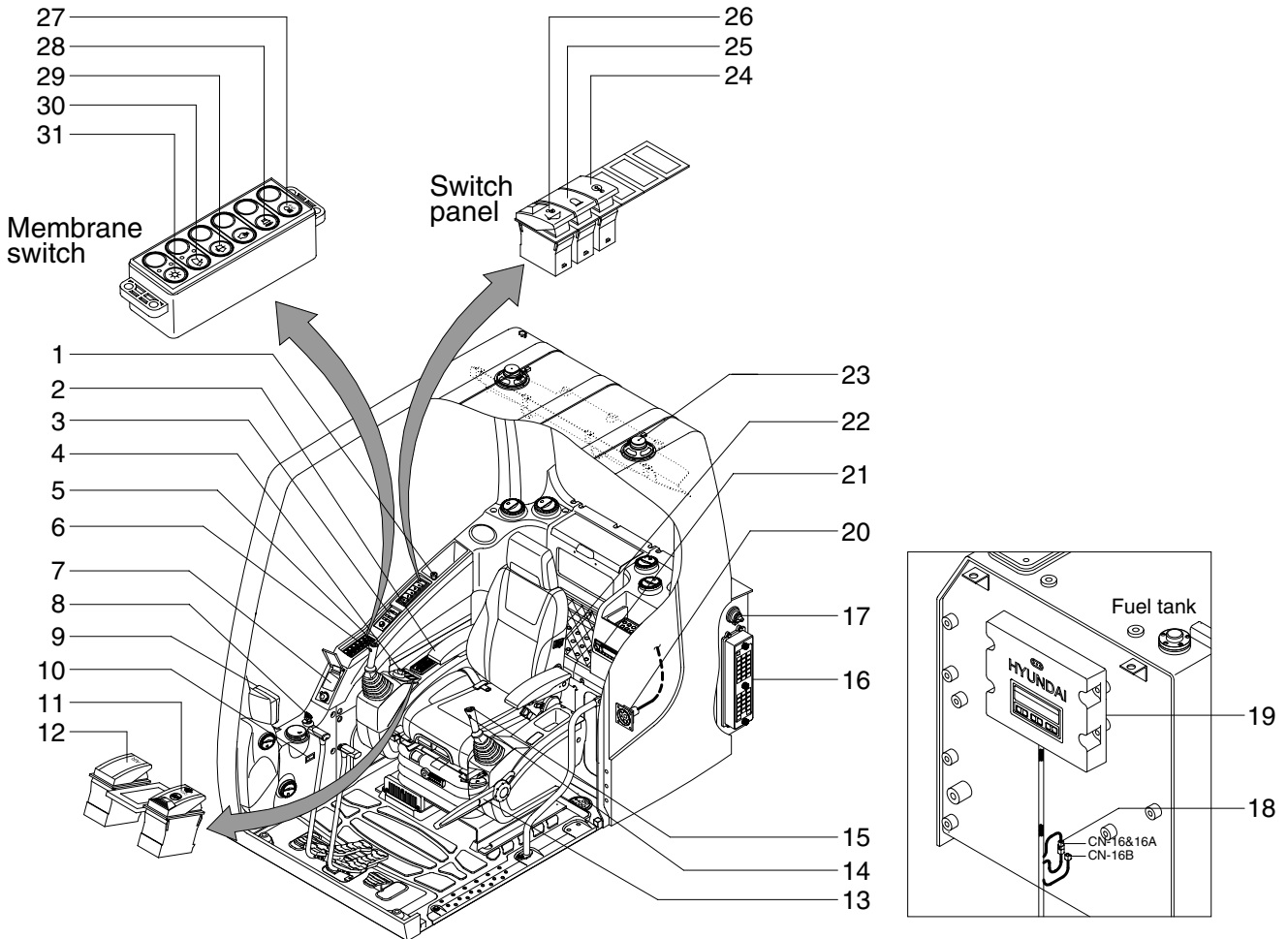
SECTION 4 ELECTRICAL SYSTEM

Group 1 Component Location	4-1
Group 2 Electrical Circuit	4-3
Group 3 Electrical Component Specification	4-21
Group 4 Connectors	4-29

SECTION 4 ELECTRICAL SYSTEM

GROUP 1 COMPONENT LOCATION

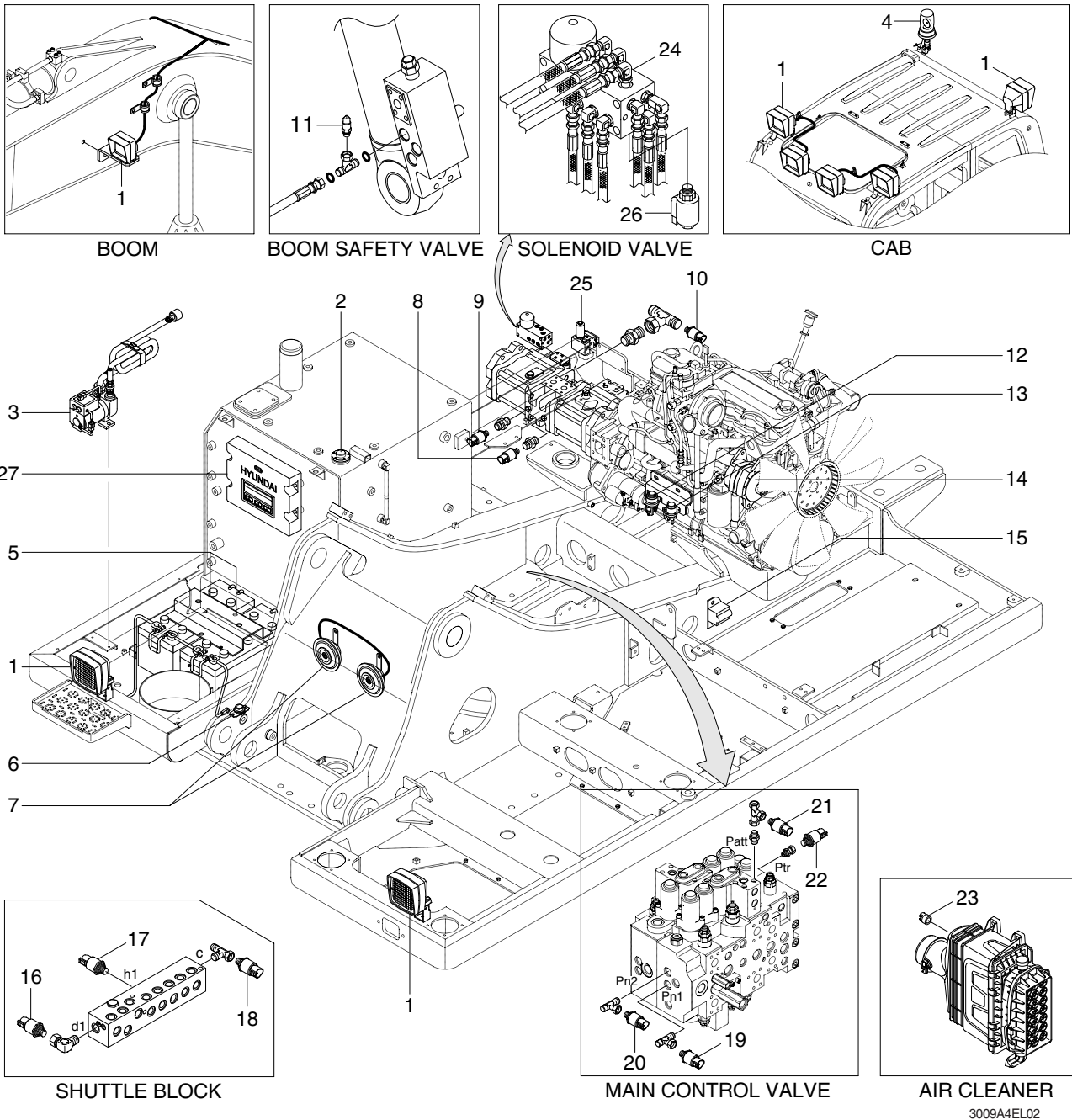
1. LOCATION 1



2609A4EL01

- | | | |
|----------------------------|---------------------------------|------------------------|
| 1 Cigar lighter | 12 DPF switch | 23 Speaker |
| 2 Air conditioner switch | 13 Safety lever | 24 Overload switch |
| 3 Remote controller | 14 Power max switch | 25 Beacon switch |
| 4 Accel dial switch | 15 One touch decel switch | 26 Quick clamp switch |
| 5 Horn switch | 16 Fuse & relay box | 27 Cab light switch |
| 6 Breaker operation switch | 17 Master switch | 28 Travel alarm switch |
| 7 Handsfree | 18 Emergency engine connector | 29 Washer switch |
| 8 Start switch | 19 Machine control unit | 30 Wiper switch |
| 9 Cluster | 20 RS232 & J1939 service socket | 31 Main light switch |
| 10 Hour meter | 21 Radio & USB player | |
| 11 Air compressor switch | 22 Heated seat switch | |

2. LOCATION 2



- | | | | | | |
|---|--------------------|----|-------------------------------|----|--------------------------|
| 1 | Lamp | 10 | EPPR pressure sensor | 19 | Nega 1 pressure sensor |
| 2 | Fuel sender | 11 | Overload pressure sensor | 20 | Nega 2 pressure sensor |
| 3 | Fuel filler pump | 12 | Start relay | 21 | Attach pressure sensor |
| 4 | Beacon lamp | 13 | Heater relay | 22 | Travel pressure sensor |
| 5 | Battery | 14 | Alternator | 23 | Air cleaner sensor |
| 6 | Battery relay | 15 | Travel alarm buzzer | 24 | Solenoid valve |
| 7 | Horn | 16 | Arm/Bucket in pressure sensor | 25 | Pump EPPR valve |
| 8 | P1 pressure sensor | 17 | Boom up pressure sensor | 26 | Boom priority EPPR valve |
| 9 | P2 pressure sensor | 18 | Swing pressure sensor | 27 | MCU |