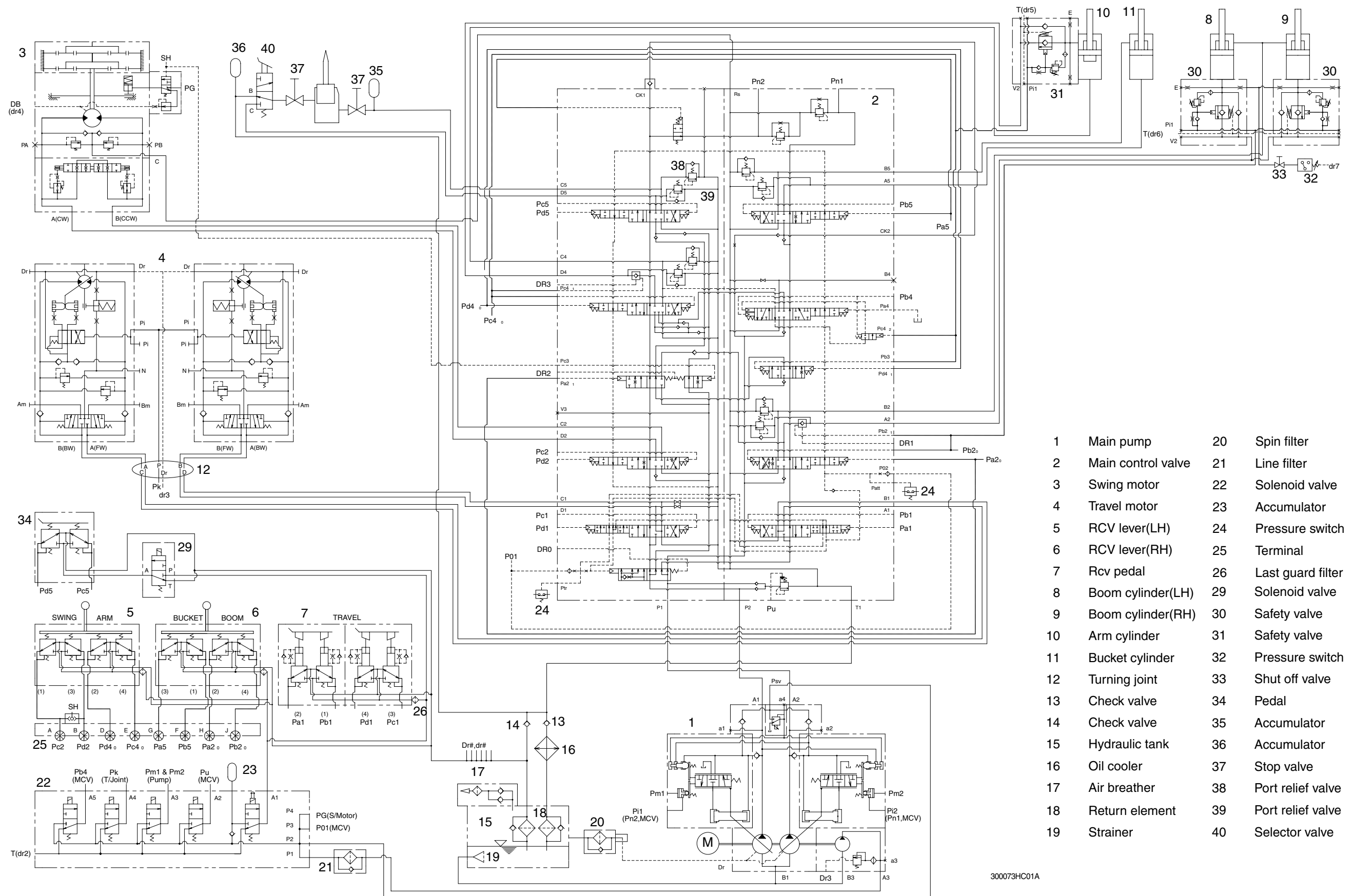


SECTION 3 HYDRAULIC SYSTEM

Group 1 Hydraulic Circuit	3-1
Group 2 Main Circuit	3-2
Group 3 Pilot Circuit	3-5
Group 4 Single Operation	3-13
Group 5 Combined Operation	3-23

SECTION 3 HYDRAULIC SYSTEM

GROUP 1 HYDRAULIC CIRCUIT



- | | | | |
|----|--------------------|----|-------------------|
| 1 | Main pump | 20 | Spin filter |
| 2 | Main control valve | 21 | Line filter |
| 3 | Swing motor | 22 | Solenoid valve |
| 4 | Travel motor | 23 | Accumulator |
| 5 | RCV lever(LH) | 24 | Pressure switch |
| 6 | RCV lever(RH) | 25 | Terminal |
| 7 | Rcv pedal | 26 | Last guard filter |
| 8 | Boom cylinder(LH) | 29 | Solenoid valve |
| 9 | Boom cylinder(RH) | 30 | Safety valve |
| 10 | Arm cylinder | 31 | Safety valve |
| 11 | Bucket cylinder | 32 | Pressure switch |
| 12 | Turning joint | 33 | Shut off valve |
| 13 | Check valve | 34 | Pedal |
| 14 | Check valve | 35 | Accumulator |
| 15 | Hydraulic tank | 36 | Accumulator |
| 16 | Oil cooler | 37 | Stop valve |
| 17 | Air breather | 38 | Port relief valve |
| 18 | Return element | 39 | Port relief valve |
| 19 | Strainer | 40 | Selector valve |

300073HC01A