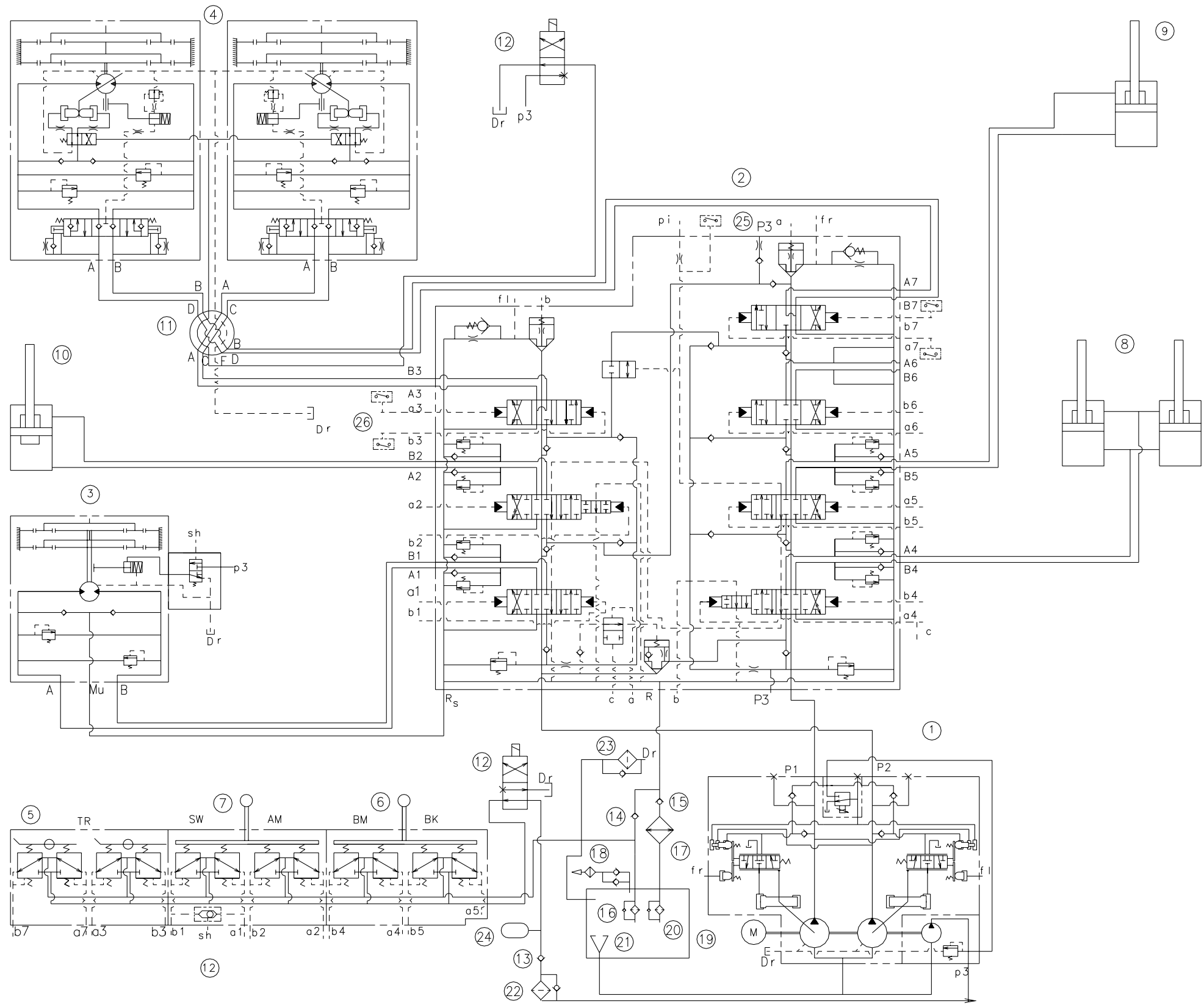


GROUP 1 HYDRAULIC CIRCUIT



- 1 PUMP
- 2 MCV
- 3 SWING MOTOR
- 4 TRACK MOTOR
- 5 RCV PEDAL
- 6 RCV LEVER
- 7 RCV LEVER
- 8 BOOM CYL
- 9 BUKT CYL
- 10 ARM CYL
- 11 TURNING JOINT
- 12 SOLENOID VALVE
- 13 CHECK VALVE
- 14 CHECK VALVE
- 15 CHECK VALVE
- 16 HYD TANK
- 17 OILCOOLER
- 18 BREATHER
- 19 BY PASS VALVE
- 20 RETURN FILTER
- 21 STRAINER
- 22 LINE FILTER
- 23 SPIN FILTER
- 24 ACCUMULATOR
- 25 PRESSURE SWITCH
- 26 PRESSURE SWITCH