

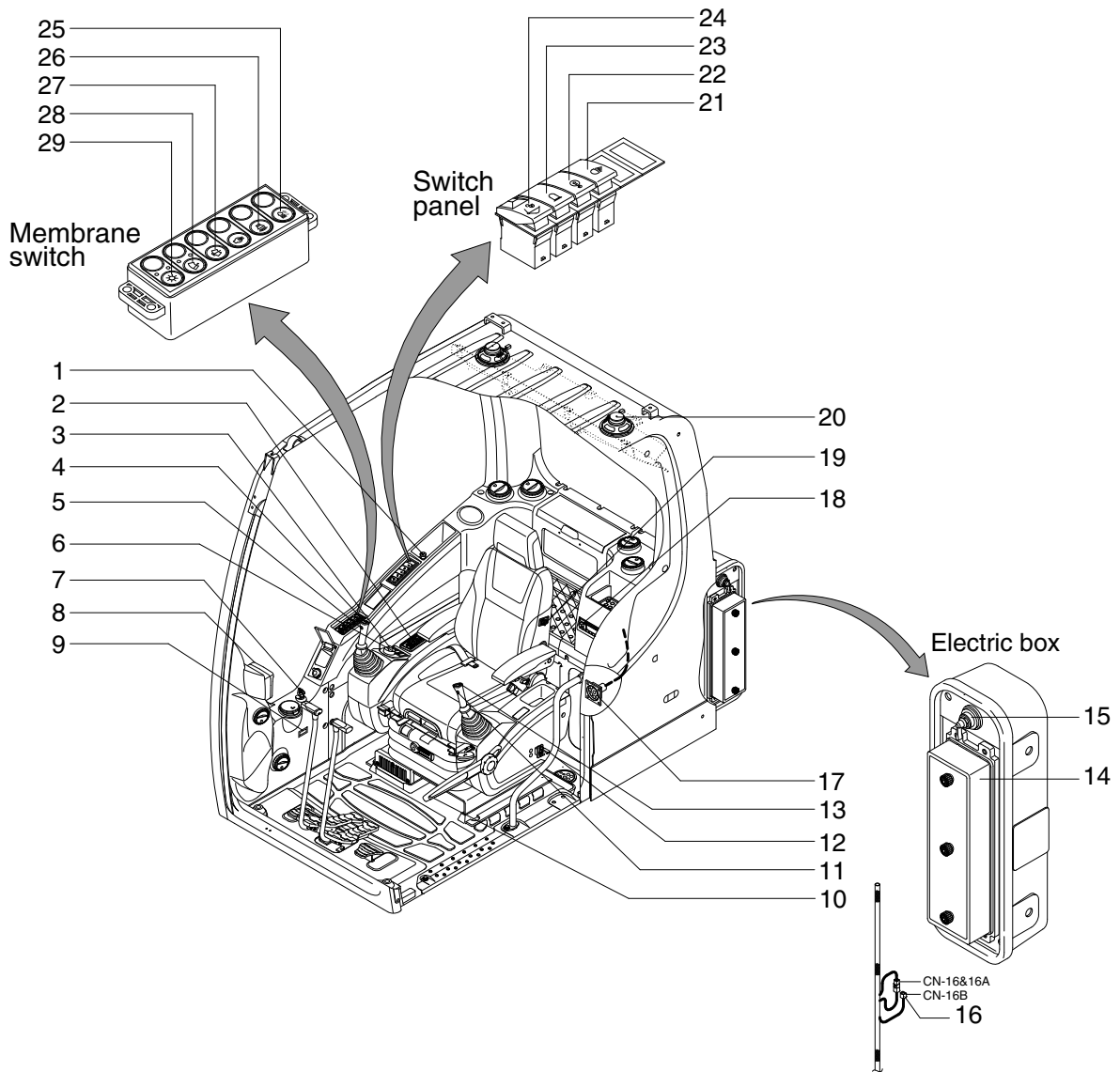
## SECTION 4 ELECTRICAL SYSTEM

Group 1 Component Location .....	4-1
Group 2 Electrical Circuit .....	4-3
Group 3 Electrical Component Specification .....	4-21
Group 4 Connectors .....	4-29

# SECTION 4 ELECTRICAL SYSTEM

## GROUP 1 COMPONENT LOCATION

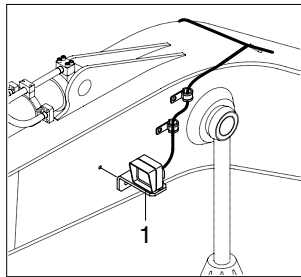
### 1. LOCATION 1



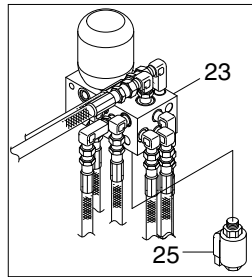
RB2609SEL01

- |                                |   |                          |
|--------------------------------|---|--------------------------|
| 1 Cigar light                  | 11 Power max switch                         | 20 Speaker               |
| 2 Aircon & heater switch panel | 12 Emergency engine stop switch             | 21 Rear work lamp switch |
| 3 Accel dial switch            | 13 One touch decel switch                   | 22 Overload switch       |
| 4 Horn switch                  | 14 Fuse box                                 | 23 Beacon switch         |
| 5 Breaker operation switch     | 15 Master switch                            | 24 Quick clamp switch    |
| 6 Air compressor switch        | 16 Emergency engine speed control connector | 25 Cab light switch      |
| 7 Starting switch              | 17 RS232 service socket                     | 26 Travel alarm switch   |
| 8 Cluster                      | 18 Radio & USB player                       | 27 Washer switch         |
| 9 Service meter                | 19 Heated seat switch                       | 28 Wiper switch          |
| 10 Safety lever                |   | 29 Main light switch     |

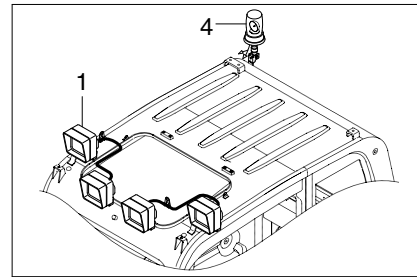
## 2. LOCATION 2



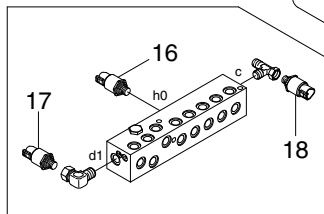
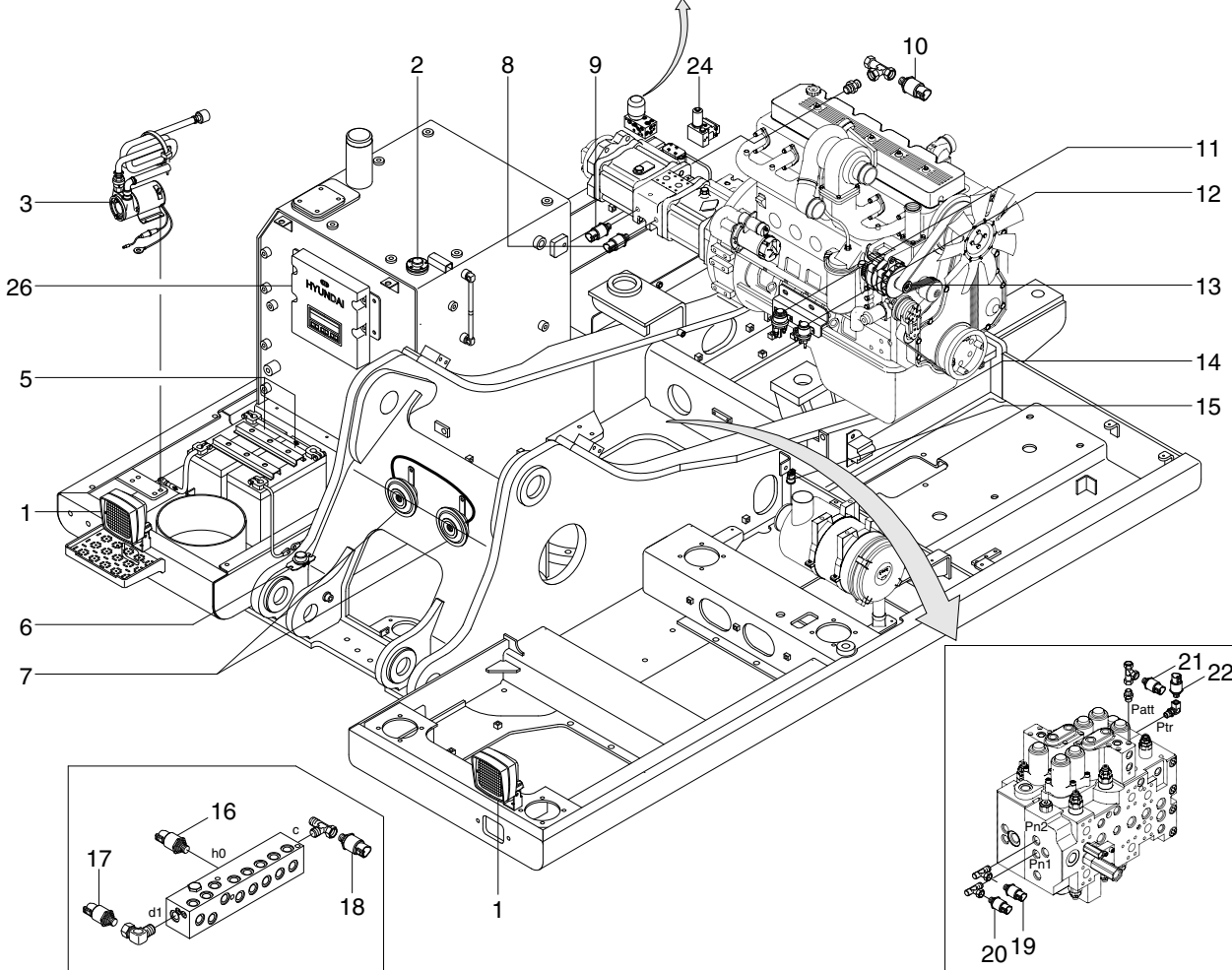
BOOM



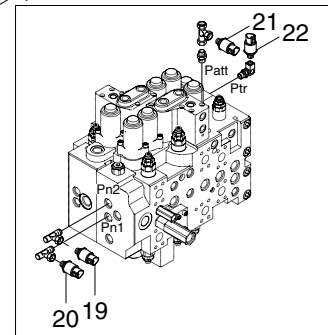
SOLENOID VALVE



CAB



SHUTTLE BLOCK



MAIN CONTROL VALVE

RB2609SEL02

- |   |                    |    |                            |    |                             |
|---|--------------------|----|----------------------------|----|-----------------------------|
| 1 | Lamp               | 10 | P3 pressure sensor         | 19 | Posi-nega 1 pressure sensor |
| 2 | Fuel sender        | 11 | Start relay                | 20 | Posi-nega 2 pressure sensor |
| 3 | Fuel filler pump   | 12 | Heater relay               | 21 | Auto idle pressure sensor   |
| 4 | Beacon lamp        | 13 | Alternator                 | 22 | EPPR Pressure sensor        |
| 5 | Battery            | 14 | Travel alarm buzzer        | 23 | Solenoid valve              |
| 6 | Battery relay      | 15 | Air cleaner switch         | 24 | Pump EPPR valve             |
| 7 | Horn               | 16 | Boom up pressure sensor    | 25 | Boom priority EPPR valve    |
| 8 | P1 pressure sensor | 17 | Arm in/out pressure sensor | 26 | MCU (machine control unit)  |
| 9 | P2 pressure sensor | 18 | Swing pressure sensor      |    |                             |