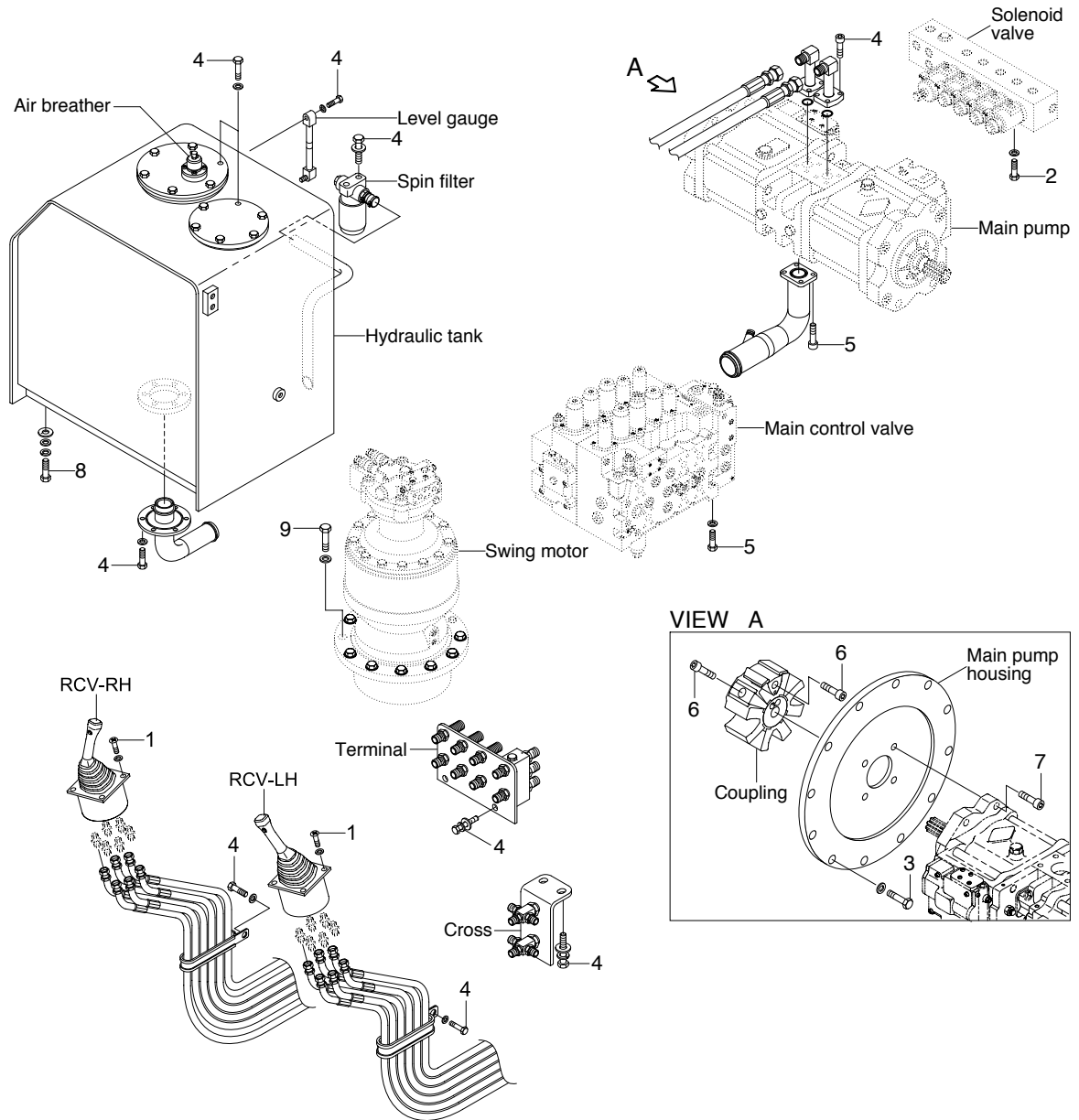


# GROUP 4 HYDRAULIC SYSTEM

## HYDRAULIC COMPONENTS MOUNTING 1



25079CM05

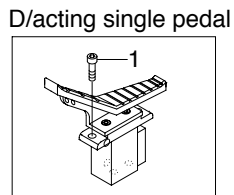
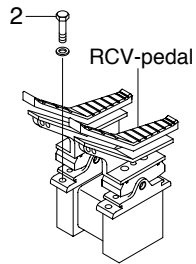
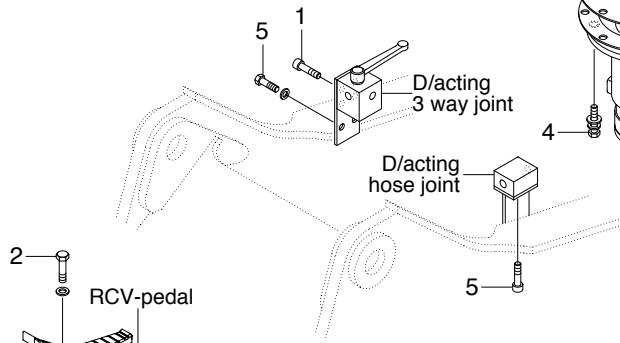
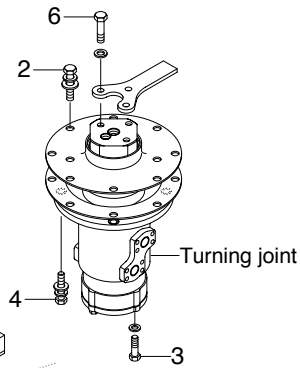
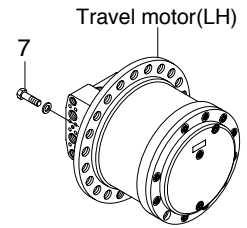
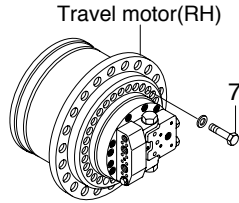
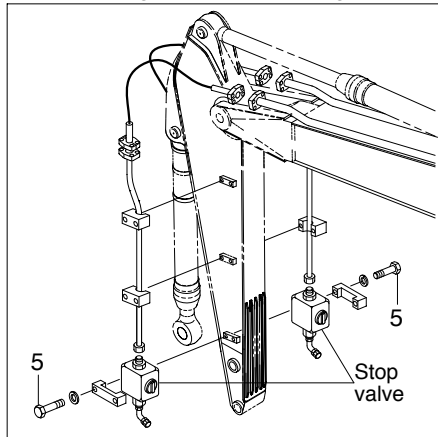
### · Tightening torque

Item	Size	kgf · m	lbf · ft
1	M 6 × 1.0	1.05 ± 0.2	7.6 ± 1.45
2	M 8 × 1.25	2.5 ± 0.5	18.1 ± 3.6
3	M10 × 1.5	4.8 ± 0.3	34.7 ± 2.2
4	M10 × 1.5	6.9 ± 1.4	49.9 ± 10.1
5	M12 × 1.75	12.2 ± 1.3	88.9 ± 9.4

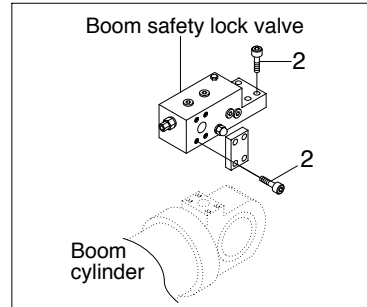
Item	Size	kgf · m	lbf · ft
6	M18 × 2.0	32 ± 1.0	232 ± 7.2
7	M20 × 2.5	42 ± 4.5	304 ± 32.5
8	M20 × 2.5	45 ± 5.1	326 ± 36.9
9	M24 × 3.0	97.8 ± 10	707 ± 72.3

## HYDRAULIC COMPONENTS MOUNTING 2

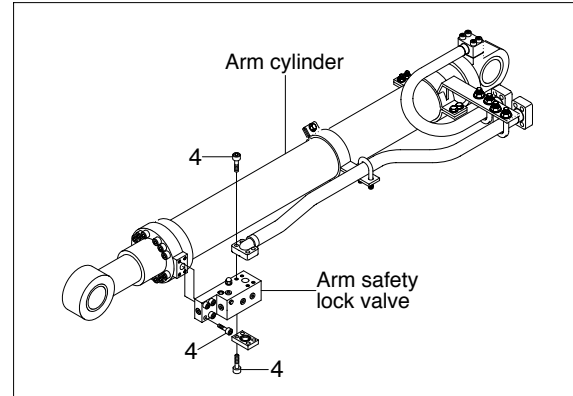
### Double acting attachment piping



### Boom safety lock system



### Arm safety lock system



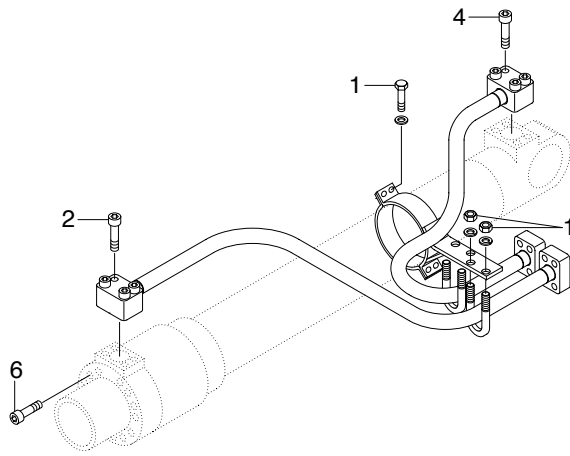
25079CM06

### · Tightening torque

Item	Size	kgf · m	lbf · ft
1	M 8 × 1.25	4.05 ± 0.8	29.3 ± 5.8
2	M10 × 1.5	6.9 ± 1.4	49.9 ± 10.1
3	M12 × 1.75	12.3 ± 1.3	88.9 ± 9.4
4	M12 × 1.75	12.0 ± 1.3	86.8 ± 9.4

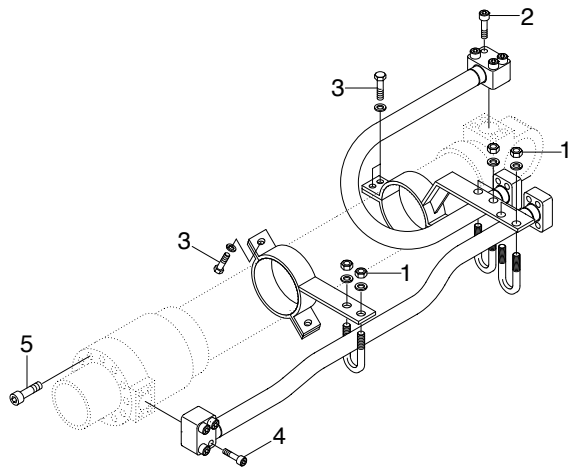
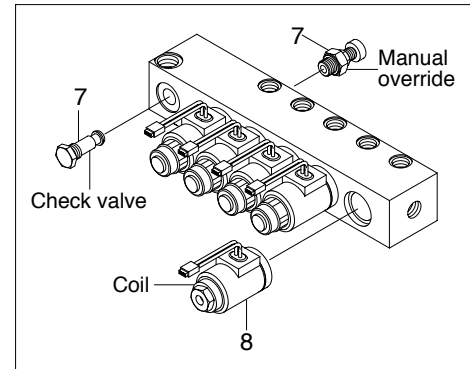
Item	Size	kgf · m	lbf · ft
5	M12 × 1.75	12.8 ± 3.0	92.6 ± 21.7
6	M14 × 2.0	19.6 ± 2.9	141.8 ± 21
7	M16 × 2.0	23.0 ± 2.5	166 ± 18.1
8	M24 × 3.0	100 ± 10	723 ± 72.3

## HYDRAULIC COMPONENTS MOUNTING 3

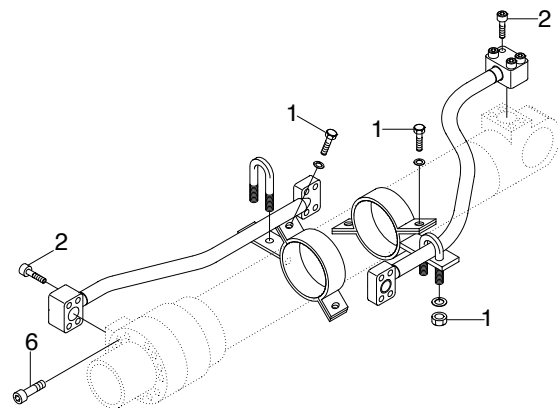


BOOM CYLINDER

### Solenoid valve



ARM CYLINDER



BUCKET CYLINDER

25079CM07

### · Tightening torque

Item	Size	kgf · m	lbf · ft
1	M10 × 1.5	3.2 ± 0.3	23.1 ± 2.2
2	M10 × 1.5	5.4 ± 0.5	39.1 ± 3.6
3	M12 × 1.75	5.5 ± 0.6	39.8 ± 4.3
4	M12 × 1.75	9.4 ± 1.0	68.0 ± 7.2

Item	Size	kgf · m	lbf · ft
5	M20 × 2.5	46 ± 5.0	333 ± 36.2
6	M22 × 2.5	63 ± 6.0	456 ± 43.4
7	M22 × 2.5	4.1	29.6
8	M27 × 3.0	5.1	36.9