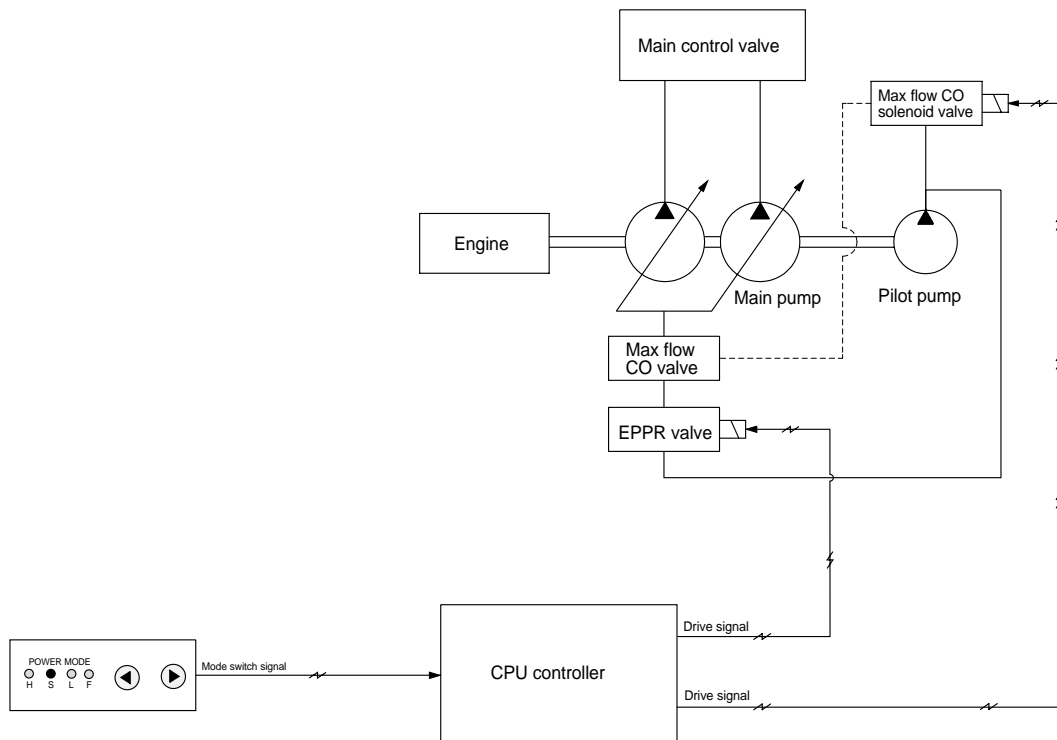


GROUP 8 MAX FLOW CUT-OFF FUNCTION



1. MAX FLOW CUT-OFF FUNCTION

When the L mode is selected, CPU controller makes max flow cut off solenoid valve activated to reduce the pump discharge volume(Q) to approximately half.

So, work speed in low pressure range(Less than 100kgf/cm²) is cut down to half by this function. In other modes(H, S, F), this function is canceled automatically.

