

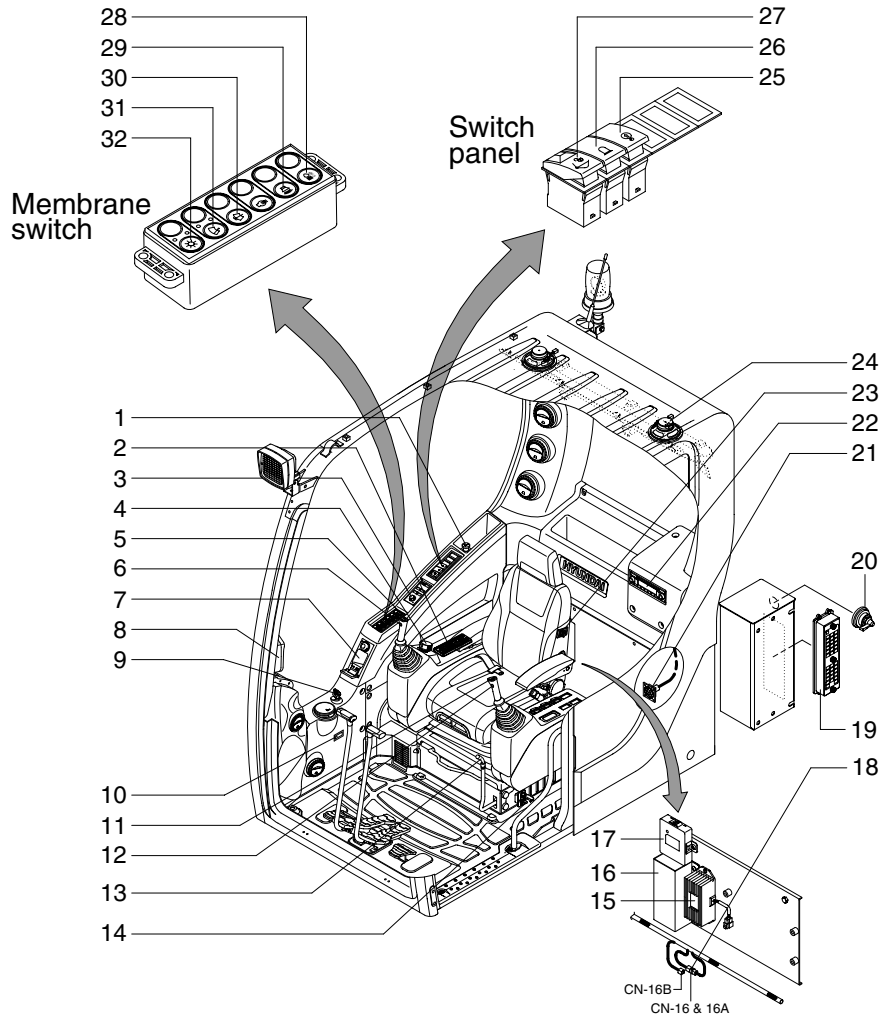
SECTION 4 ELECTRICAL SYSTEM

Group 1 Component Location	4-1
Group 2 Electrical Circuit	4-3
Group 3 Electrical Component Specification	4-21
Group 4 Connectors	4-29

SECTION 4 ELECTRICAL SYSTEM

GROUP 1 COMPONENT LOCATION

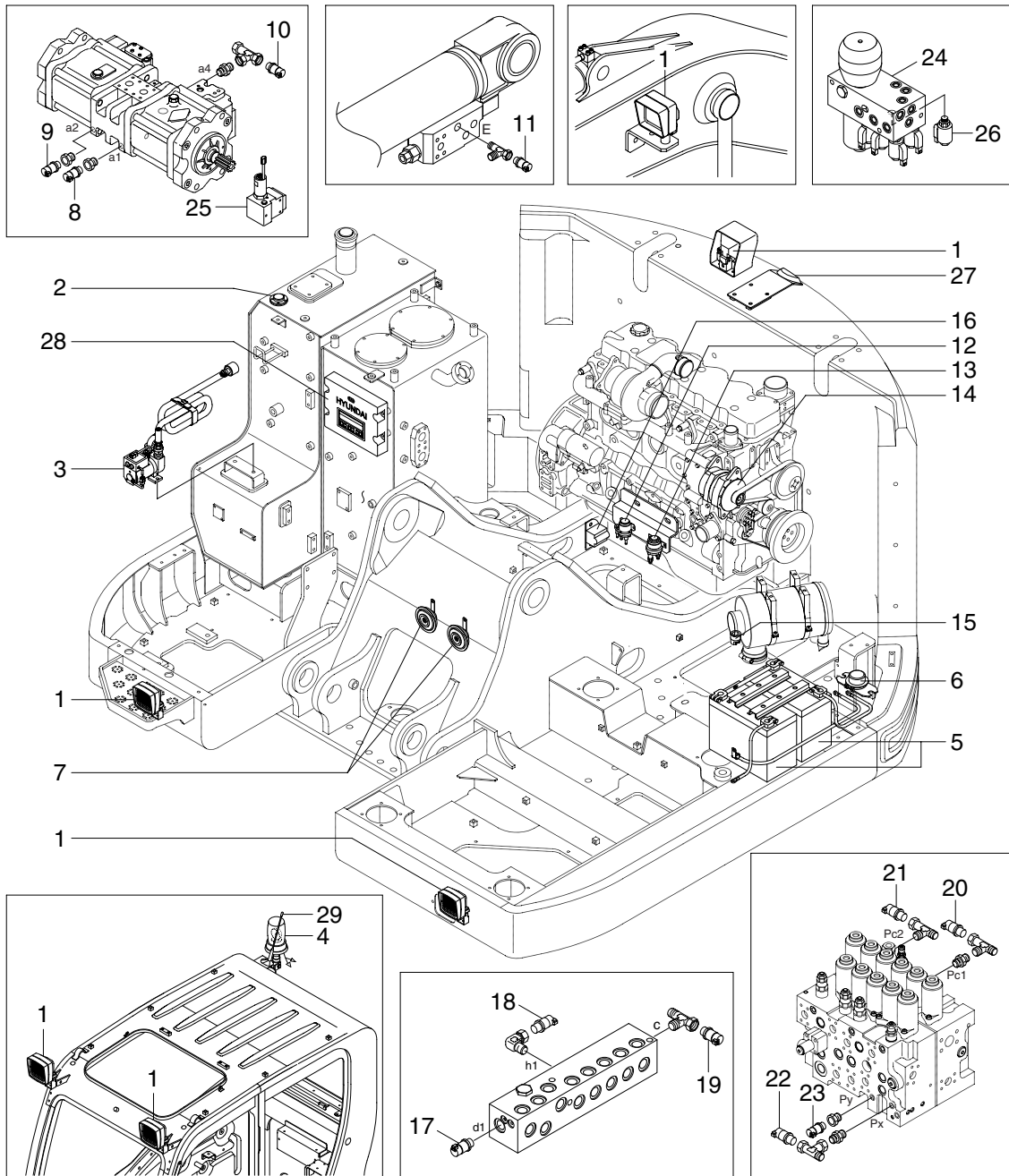
1. LOCATION 1



235Z94EL01

- | | | |
|----------------------------|---------------------------------|------------------------|
| 1 Cigar lighter | 12 Power max switch | 23 Heated seat switch |
| 2 Air conditioner switch | 13 Safety lever | 24 Speaker |
| 3 Remote controller | 14 Emergency engine stop switch | 25 Overload switch |
| 4 Accel dial switch | 15 DC/DC converter | 26 Beacon switch |
| 5 Horn switch | 16 Remote control unit | 27 Quick clamp switch |
| 6 Breaker operation switch | 17 Handsfree control unit | 28 Cab light switch |
| 7 Handsfree | 18 Emergency engine connector | 29 Travel alarm switch |
| 8 Cluster | 19 Fuse & relay box | 30 Washer switch |
| 9 Start switch | 20 Master switch | 31 Wiper switch |
| 10 Hour meter | 21 RS232 & J1939 service socket | 32 Main light switch |
| 11 One touch decel switch | 22 Radio & CD/MP3 player | |

2. LOCATION 2



235Z94EL02

- | | | | | | |
|----|----------------------|----|-------------------------------|----|-----------------------------|
| 1 | Lamp | 11 | Overload pressure sensor | 21 | Posi-nega 2 pressure sensor |
| 2 | Fuel sender | 12 | Start relay | 22 | Attach pressure sensor |
| 3 | Fuel filler pump | 13 | Heater relay | 23 | Travel pressure sensor |
| 4 | Beacon lamp | 14 | Alternator | 24 | Solenoid valve |
| 5 | Battery | 15 | Air cleaner switch | 25 | Pump EPPR valve |
| 6 | Battery relay | 16 | Travel alarm buzzer | 26 | Boom priority EPPR valve |
| 7 | Horn | 17 | Arm/Bucket in pressure sensor | 27 | Rear camera |
| 8 | P1 pressure sensor | 18 | Boom up pressure sensor | 28 | Machine control unit |
| 9 | P2 pressure sensor | 19 | Swing pressure sensor | 29 | Satellite antenna |
| 10 | EPPR pressure sensor | 20 | Posi-nega 1 pressure sensor | | |