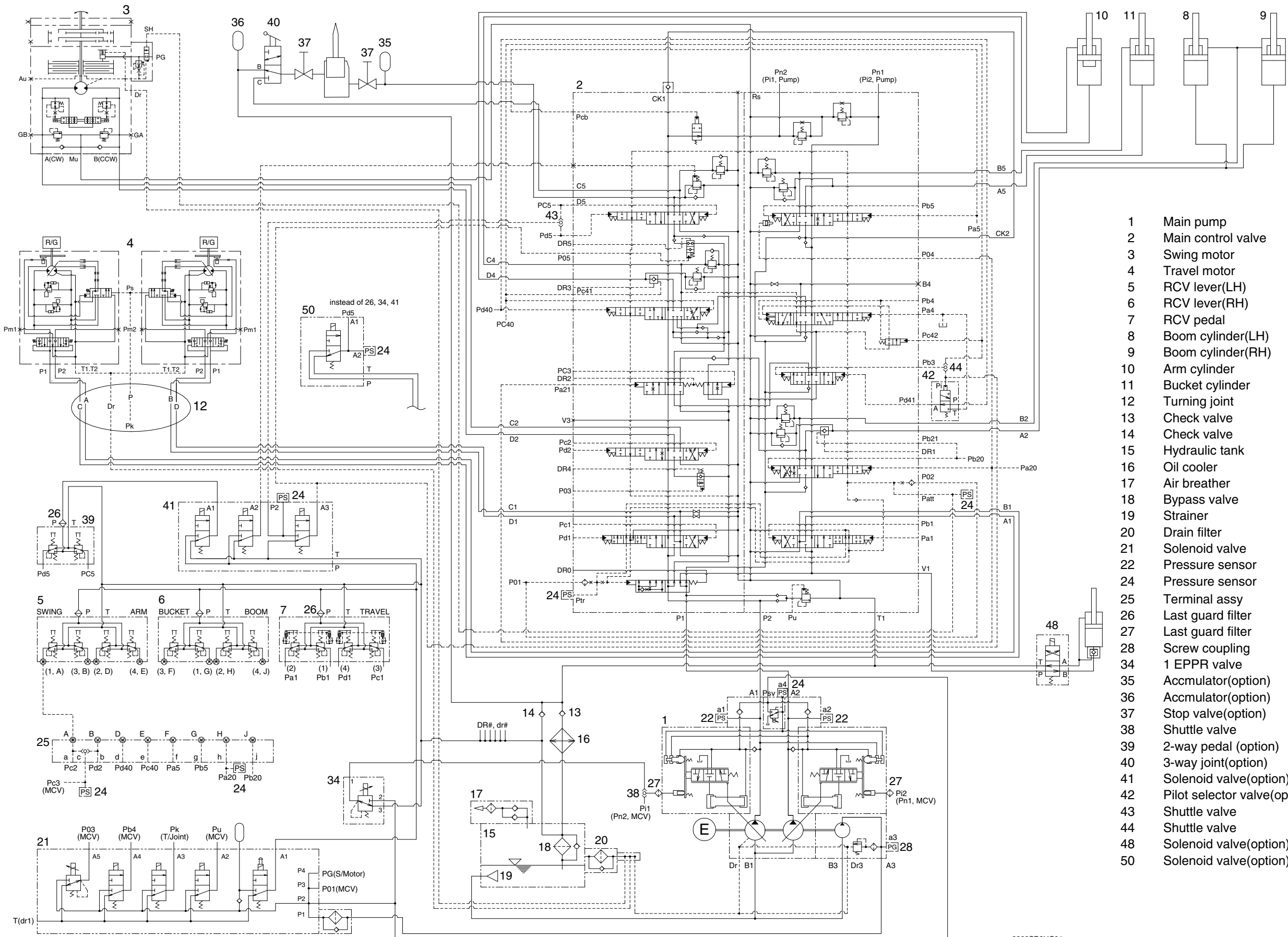


SECTION 3 HYDRAULIC SYSTEM

Group 1 Hydraulic Circuit	3-1
Group 2 Main Circuit	3-2
Group 3 Pilot Circuit	3-5
Group 4 Single Operation	3-14
Group 5 Combined Operation	3-24

GROUP 1 HYDRAULIC CIRCUIT



- 1 Main pump
- 2 Main control valve
- 3 Swing motor
- 4 Travel motor
- 5 RCV lever(LH)
- 6 RCV lever(RH)
- 7 RCV pedal
- 8 Boom cylinder(LH)
- 9 Boom cylinder(RH)
- 10 Arm cylinder
- 11 Bucket cylinder
- 12 Turning joint
- 13 Check valve
- 14 Check valve
- 15 Hydraulic tank
- 16 Oil cooler
- 17 Air breather
- 18 Bypass valve
- 19 Strainer
- 20 Drain filter
- 21 Solenoid valve
- 22 Pressure sensor
- 24 Pressure sensor
- 25 Terminal assy
- 26 Last guard filter
- 27 Last guard filter
- 28 Screw coupling
- 34 1 EPPR valve
- 35 Accumulator(option)
- 36 Accumulator(option)
- 37 Stop valve(option)
- 38 Shuttle valve
- 39 2-way pedal (option)
- 40 3-way joint(option)
- 41 Solenoid valve(option)
- 42 Pilot selector valve(option)
- 43 Shuttle valve
- 44 Shuttle valve
- 48 Solenoid valve(option)
- 50 Solenoid valve(option)

2209SB3HC01