

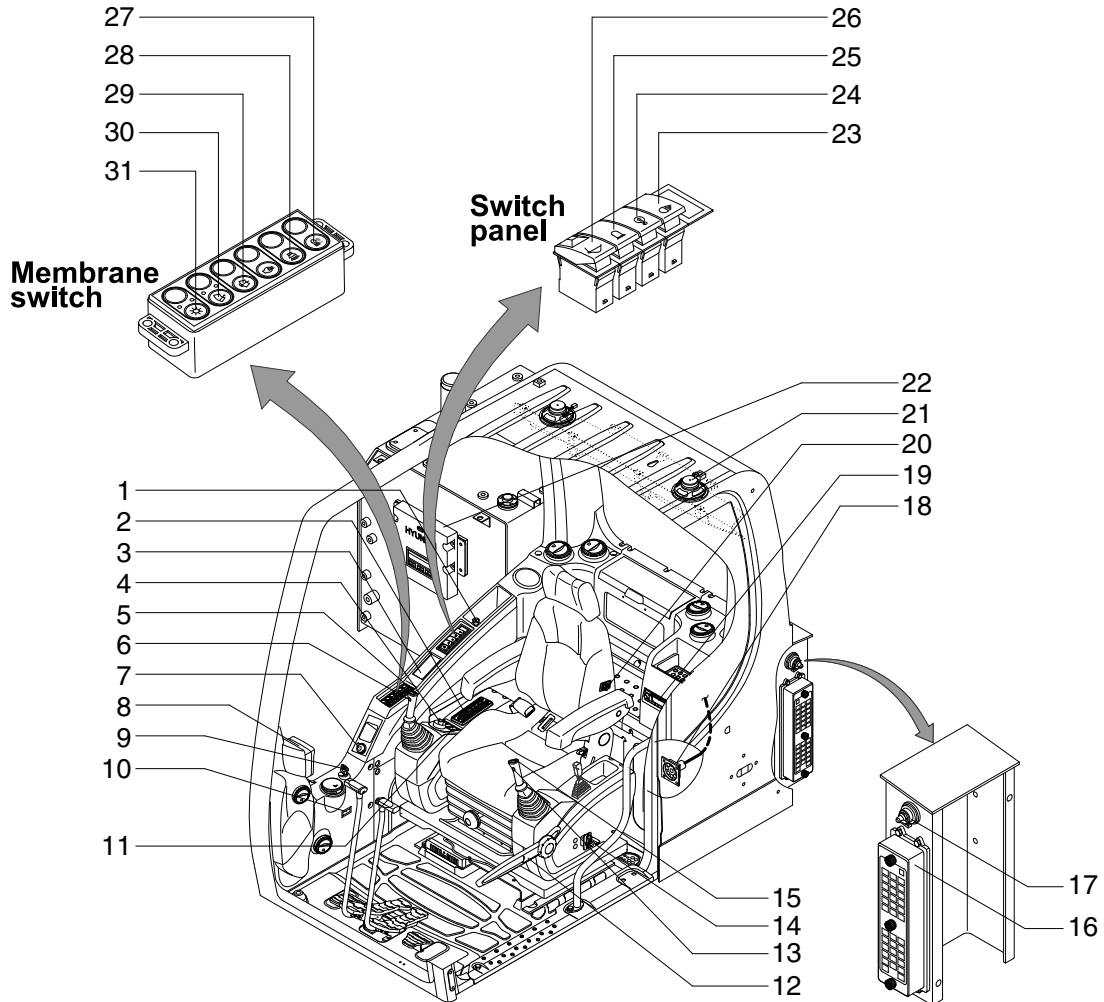
SECTION 4 ELECTRICAL SYSTEM

Group 1 Component Location	4-1
Group 2 Electrical Circuit	4-3
Group 3 Electrical Component Specification	4-21
Group 4 Connectors	4-29

SECTION 4 ELECTRICAL SYSTEM

GROUP 1 COMPONENT LOCATION

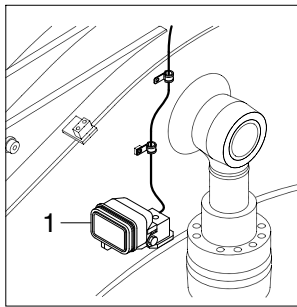
1. LOCATION 1



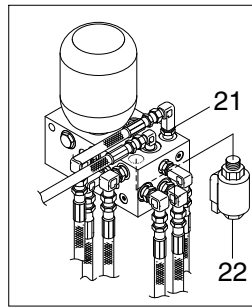
2209SB4EL01

- | | | |
|-----------------------------------|---------------------------------|--------------------------|
| 1 Cigar lighter | 12 Safety lever | 23 Rear work lamp switch |
| 2 Air conditioner & heater switch | 13 Power max switch | 24 Overload switch |
| 3 Remote controller | 14 Emergency engine stop switch | 25 Beacon switch |
| 4 Accel dial switch | 15 One touch decel switch | 26 Quick clamp switch |
| 5 Horn switch | 16 Fuse & relay box | 27 Cab light switch |
| 6 Breaker operation switch | 17 Master switch | 28 Travel alarm switch |
| 7 12 V socket | 18 RS232 service socket | 29 Washer switch |
| 8 Cluster | 19 Radio & USB player | 30 Wiper switch |
| 9 Start switch | 20 Heated seat switch | 31 Main light switch |
| 10 Hour meter | 21 Speaker | |
| 11 Air compressor switch | 22 Machine control unit (MCU) | |

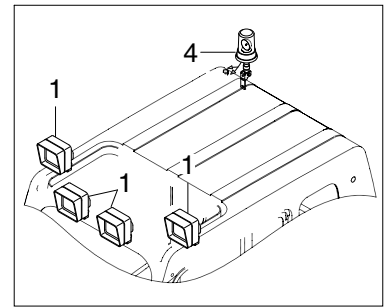
2. LOCATION 2



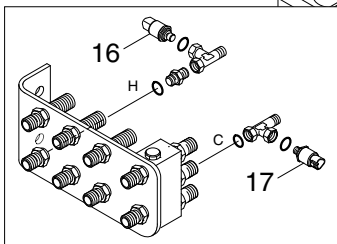
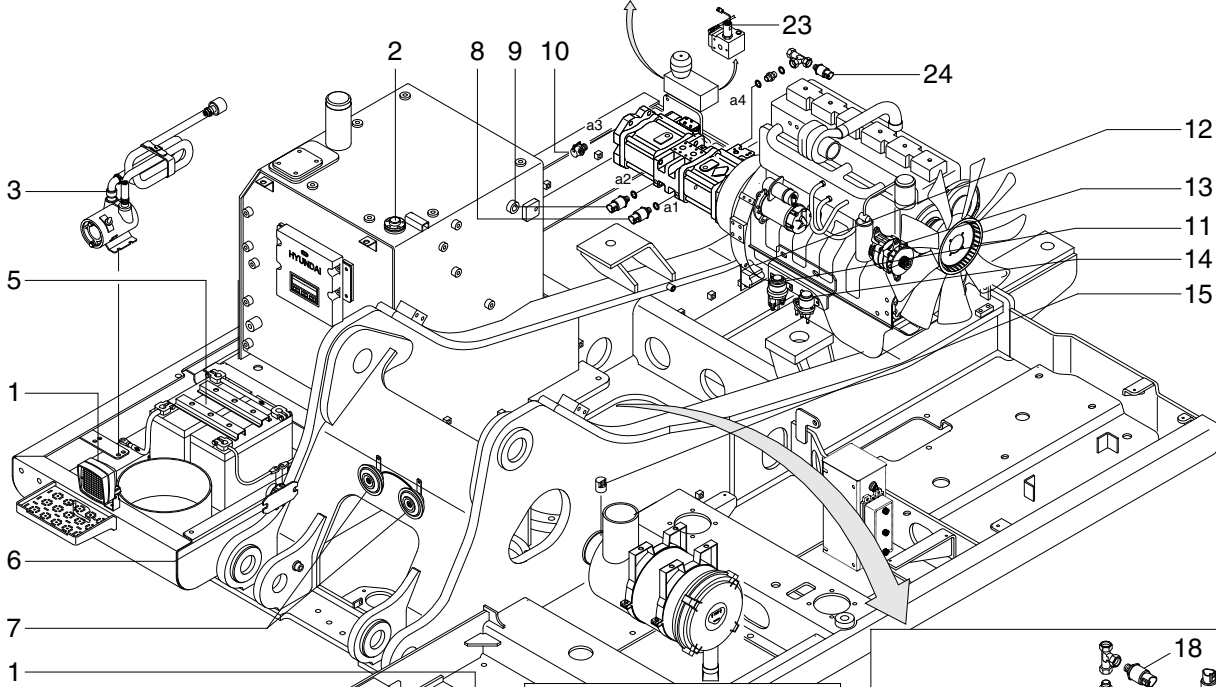
BOOM



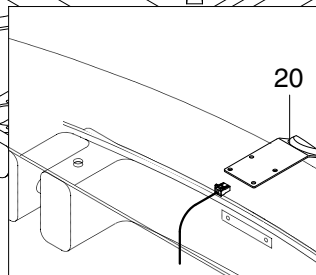
SOLENOID VALVE



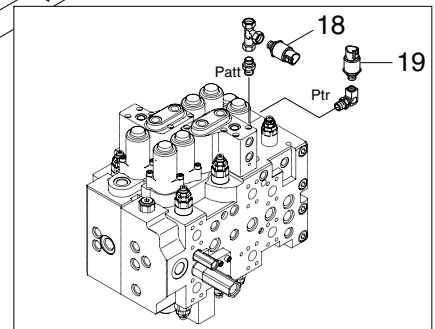
CAB



TERMINAL



COUNTERWEIGHT



MAIN CONTROL VALVE

2209SB4EL02

- | | | |
|----------------------|----------------------------|-----------------------------|
| 1 Lamp | 9 P2 pressure sensor | 17 Swing pressure sensor |
| 2 Fuel sender | 10 Screw coupling | 18 Attach pressure sensor |
| 3 Fuel filler pump | 11 Start relay | 19 Travel pressure sensor |
| 4 Beacon lamp | 12 Back buzzer | 20 Rear view camera |
| 5 Battery | 13 Alternator | 21 Solenoid valve |
| 6 Battery relay | 14 Heater relay | 22 Boom priority EPPR valve |
| 7 Horn | 15 Air cleaner sensor | 23 Pump EPPR valve |
| 8 P1 pressure sensor | 16 Boom up pressure sensor | 24 EPPR pressure sensor |