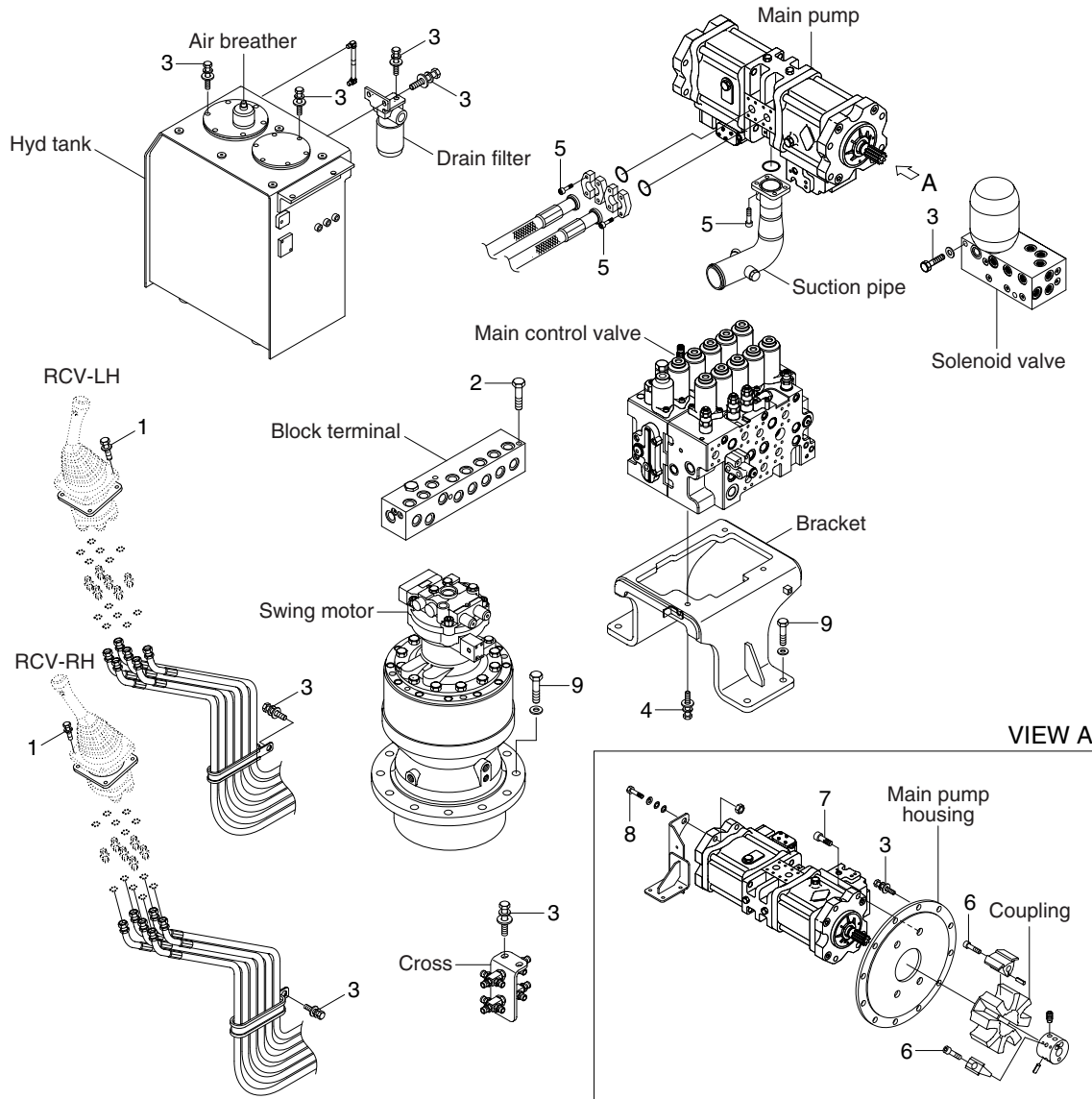


# GROUP 4 HYDRAULIC SYSTEM

## HYDRAULIC COMPONENTS MOUNTING 1



2209A9CM05

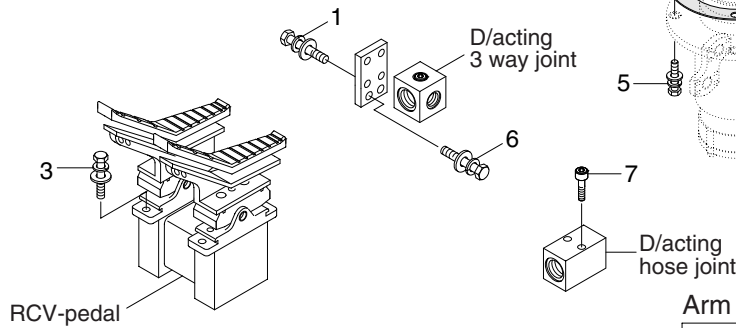
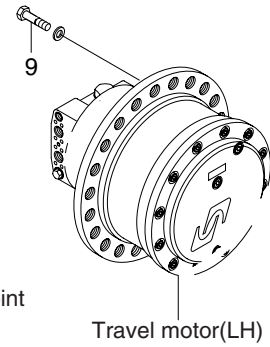
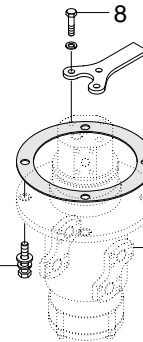
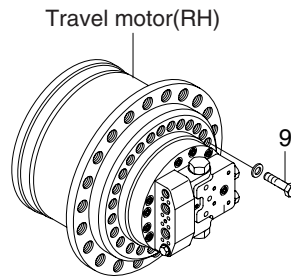
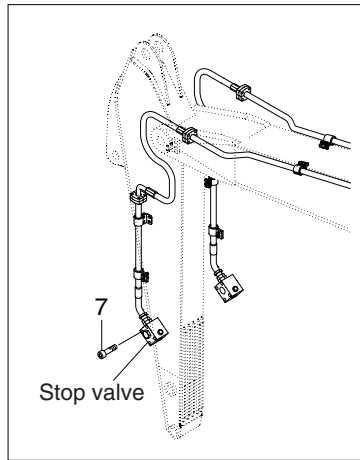
### · Tightening torque

Item	Size	kgf · m	lbf · ft
1	M 6×1.0	1.05±0.2	7.6±1.45
2	M 8×1.25	2.5±0.5	18.1±3.6
3	M10×1.5	6.9±1.4	49.9±10.1
4	M12×1.75	12.3±1.3	89±9.4
5	M12×1.75	14.7±2.2	106±15.9

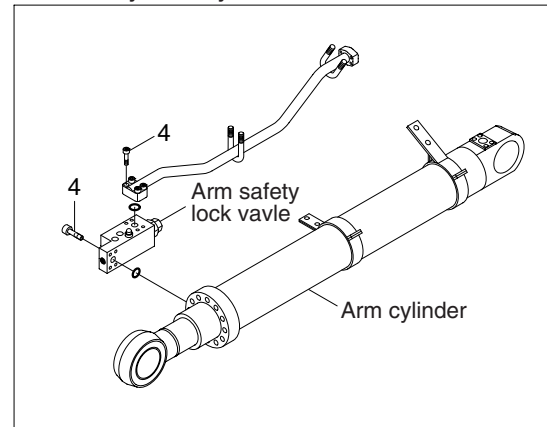
Item	Size	kgf · m	lbf · ft
6	M18×2.5	32±1.0	231±7.2
7	M20×2.5	42±4.5	304±32.5
8	M20×2.5	46±5.1	333±36.9
9	M20×2.5	57.9±5.8	419±42
-	-	-	-

# HYDRAULIC COMPONENTS MOUNTING 2

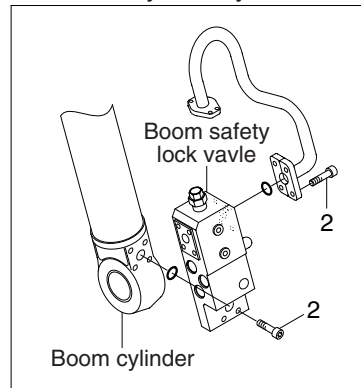
## Double acting attachment piping



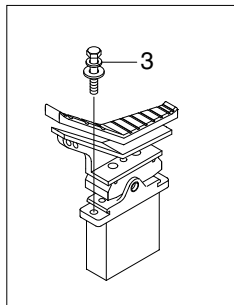
## Arm safety lock system



## Boom safety lock system



## D/acting single pedal



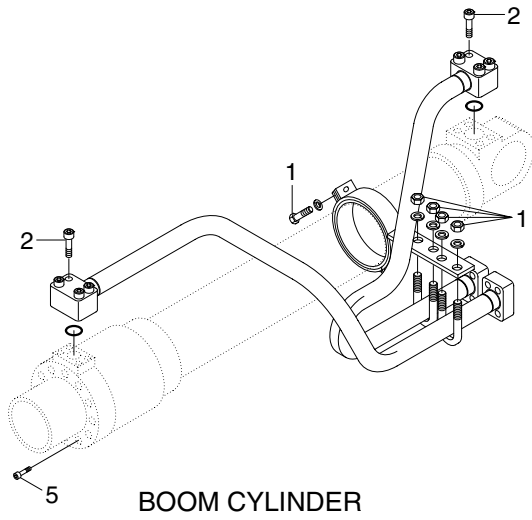
2209A9CM06

## · Tightening torque

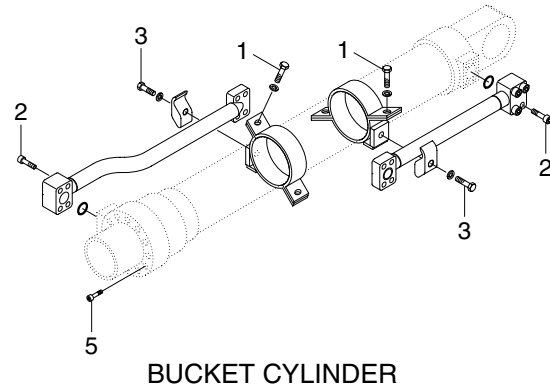
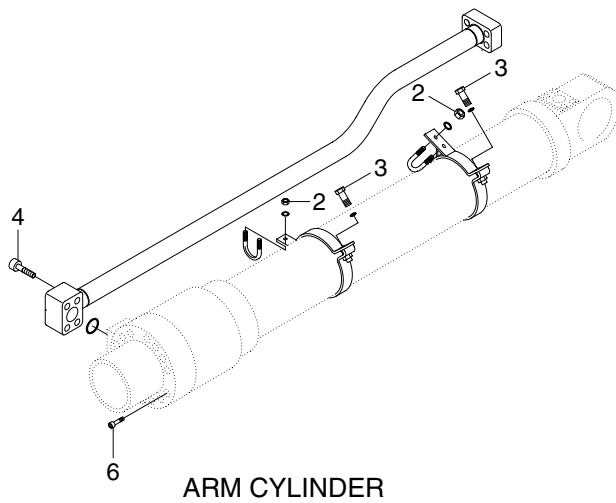
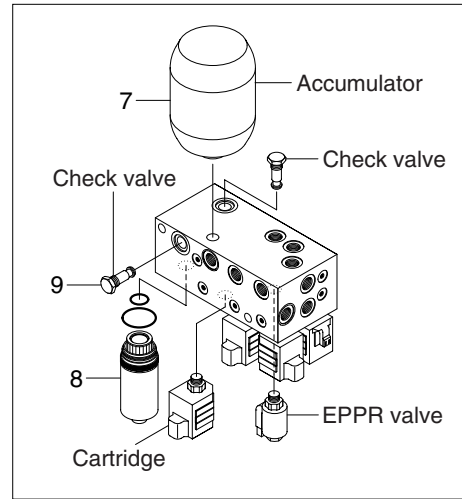
Item	Size	kgf · m	lbf · ft
1	M 8×1.25	2.5±0.5	18.1±3.6
2	M10×1.5	5.4±0.5	39±3.6
3	M10×1.5	6.9±1.4	49.9±10.1
4	M12×1.75	9.4±1.0	68±7.2
5	M12×1.75	12.0±1.3	86.8±9.4

Item	Size	kgf · m	lbf · ft
6	M12×1.75	12.8±3.0	92.6±21.7
7	M12×1.75	14.7±2.2	106±15.9
8	M14×2.0	19.6±2.9	142±21.0
9	M16×2.0	23.0±2.5	166±18.1
-	-	-	-

# HYDRAULIC COMPONENTS MOUNTING 3



## Solenoid valve



2209A9CM07

### · Tightening torque

Item	Size	kgf · m	lbf · ft
1	M10×1.5	3.2±0.3	23.1±2.2
2	M10×1.5	5.4±0.5	39.1±3.6
3	M12×1.75	5.5±0.6	39.8±4.3
4	M12×1.75	9.4±1.0	68.0±7.2
5	M16×2.0	23±2.0	166±14.5

Item	Size	kgf · m	lbf · ft
6	M18×2.5	32±3.0	232±21.7
7	Accumulator	5.6±0.5	40.5±3.6
8	Line filter	2.5	18.0
9	Check valve	2.5±0.5	18±3.6
-	-	-	-