

GROUP 5 MECHATRONICS SYSTEM (#1001 and up, TIER II)

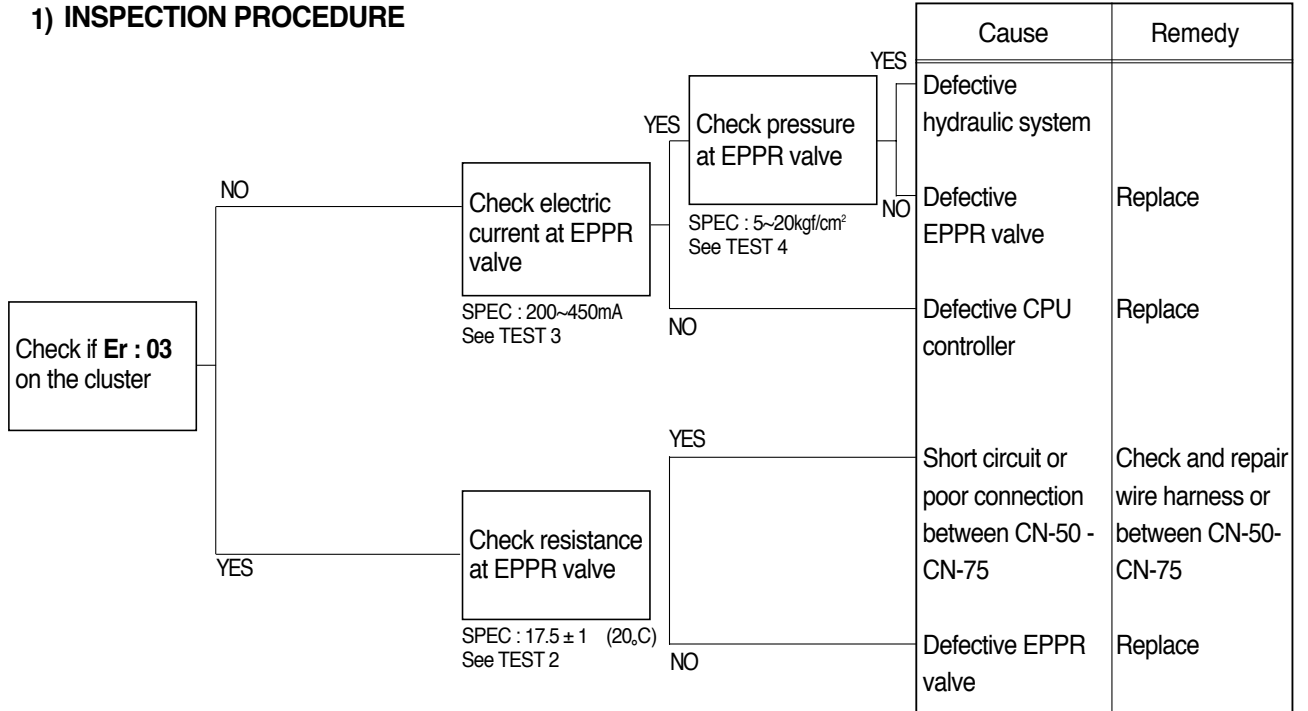
1. ALL ACTUATORS SPEED ARE SLOW

Boom, Arm, Bucket, Swing and travel speed are slow, but engine speed is good.

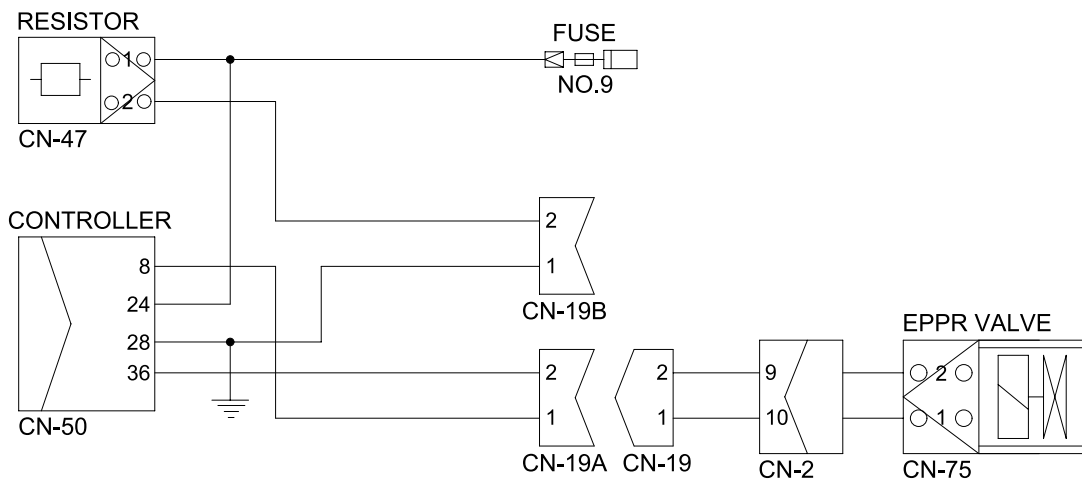
Spec : H-mode 2150 ± 50rpm S-mode 2050 ± 50rpm

Before carrying out below procedure, check all the related connectors are properly inserted.

1) INSPECTION PROCEDURE



Wiring diagram

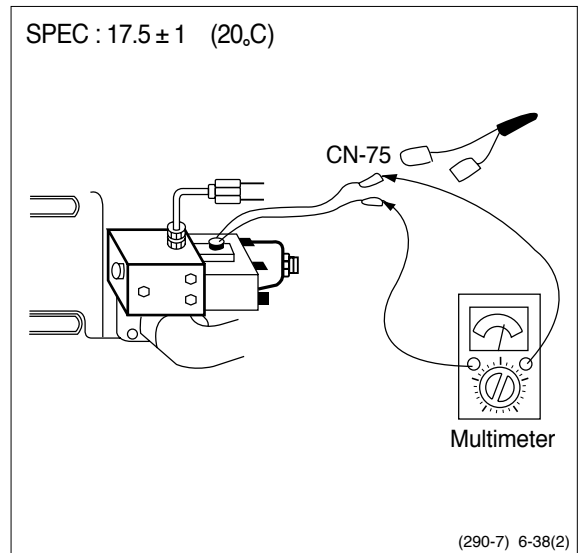


- (1) **Test 2** : Check resistance at connector CN-75.

Starting key OFF.

Disconnect connector CN-75 from EPPR valve at main hydraulic pump.

Check resistance between 2 lines as figure.



- (2) **Test 3** : Check electric current at EPPR valve.

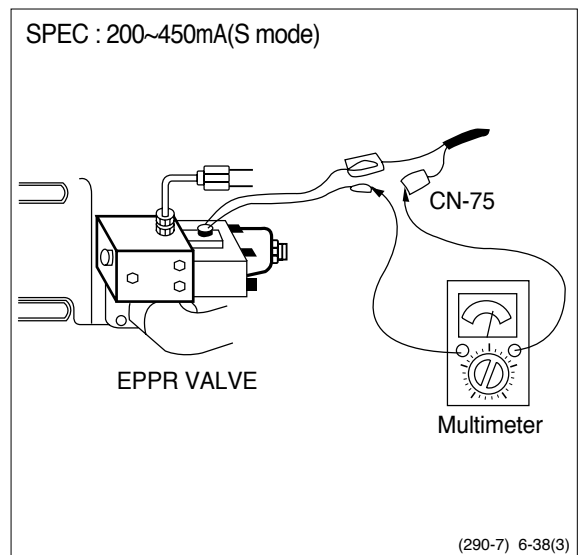
Install multimeter as figure.

Start engine.

Set the accel dial at "10"(MAX)

Set S-mode and cancel auto decel mode.

If tachometer show approx 2050 ± 50 rpm check electric current.



- (3) **Test 4** : Check pressure at EPPR valve.

Remove plug and connect pressure gauge as figure.

- Gauge capacity : 0 to 40~50kgf/cm²
(0 to 570~710psi)

Start engine.

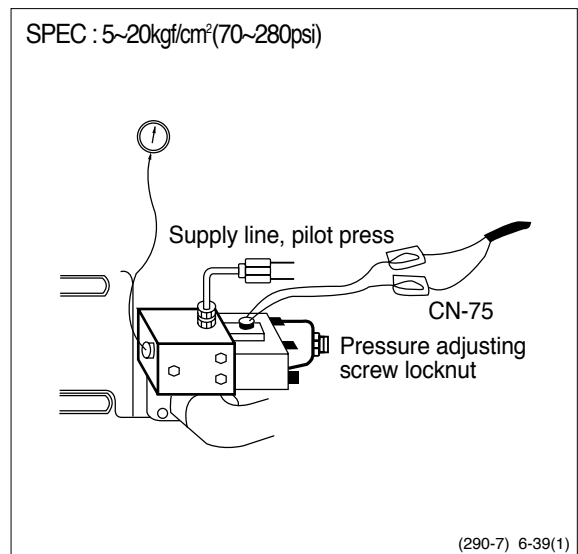
Set the accel dial at "10"(Max).

Set S-mode and cancel auto decel mode.

If tachometer show approx 2050 ± 50 rpm check pressure.

If pressure is not correct, adjust it.

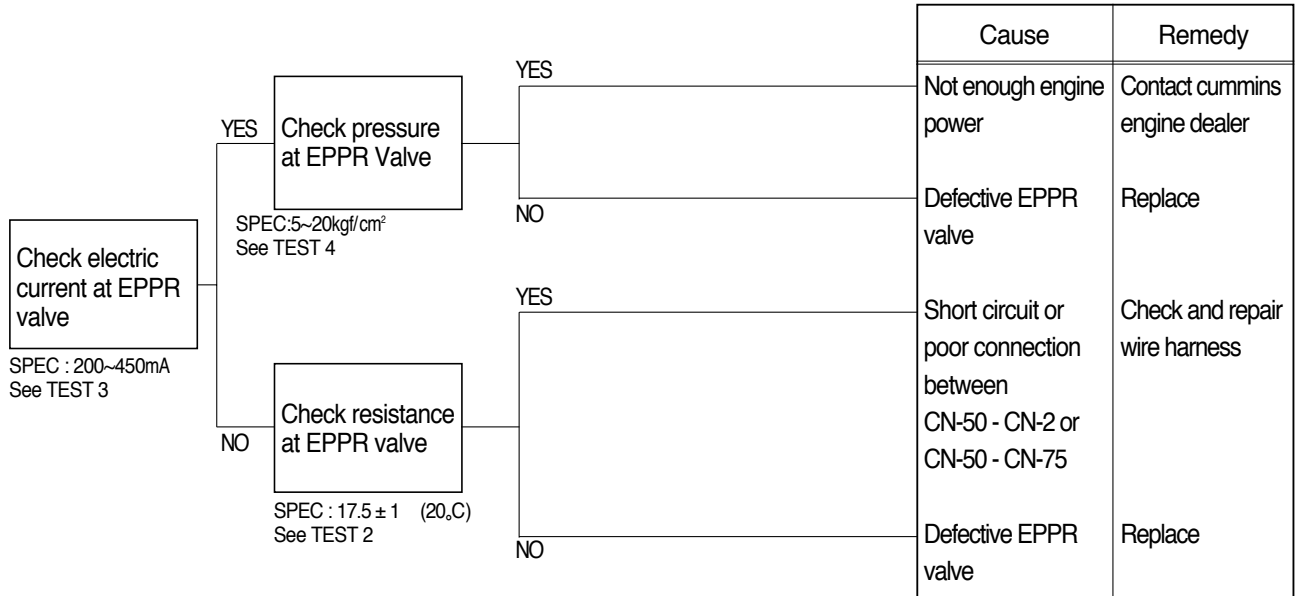
After adjust, test the machine.



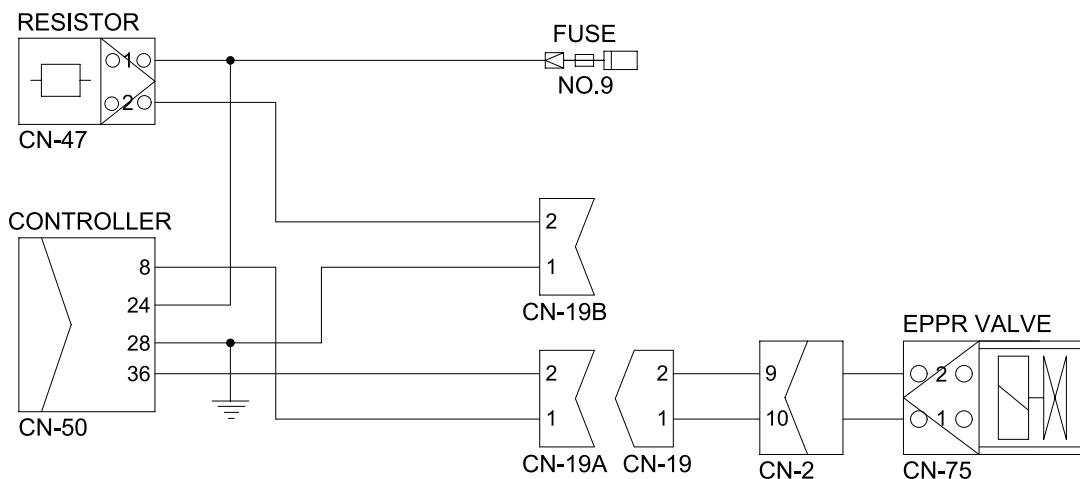
2. ENGINE STALL

Before carrying out below procedure, check all the related connectors are properly inserted.

1) INSPECTION PROCEDURE



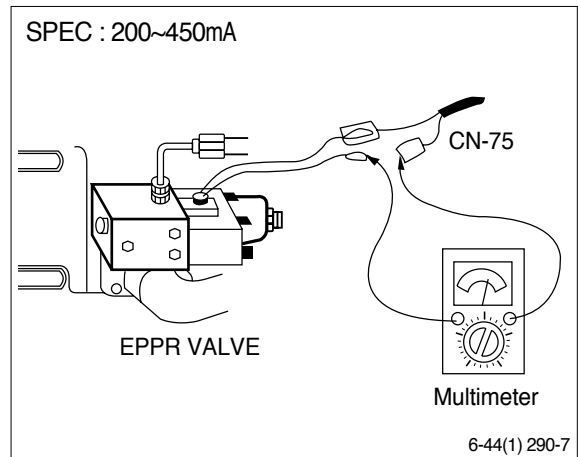
Wiring diagram



21076MS51

2) TEST PROCEDURE

- (1) **Test 3** : Check electric current at EPPR valve at S-mode
Install multimeter as figure.
Start engine.
Set the accel dial at "10"(max)
Set S-mode with 2050 ± 50 rpm.
Check electric current.



- (2) **Test 4** : Check pressure at EPPR valve at S-mode
Connect pressure gauge at EPPR valve.
Start engine.
Set the accel dial at "10"(max)
Set S-mode with 2050 ± 50 rpm.
Operate bucket lever completely push or pull.
Hold arm lever at the end of stroke.
Check pressure at relief position.

