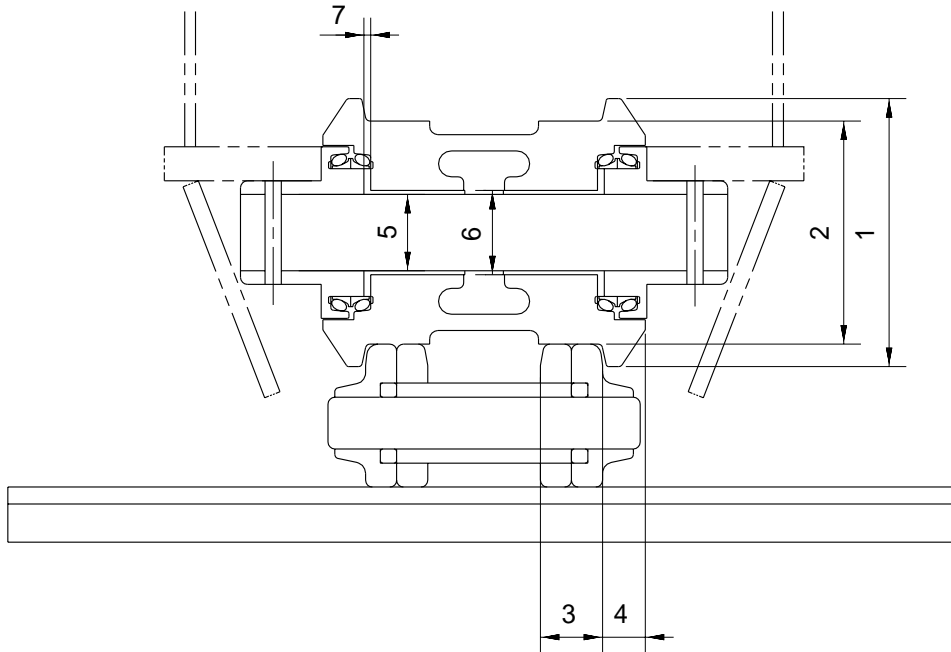


GROUP 3 TRACK AND WORK EQUIPMENT

1. TRACK

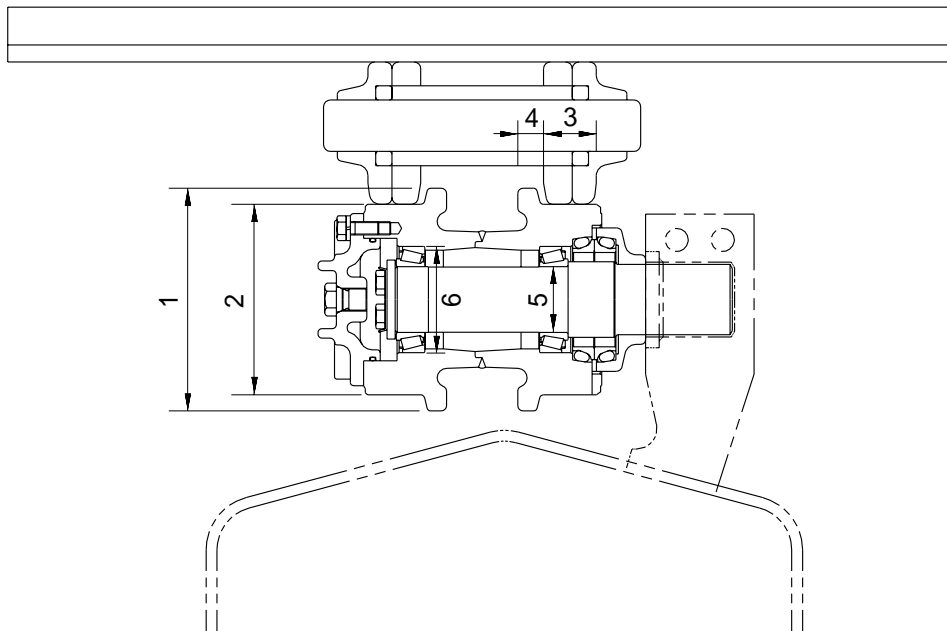
1) TRACK ROLLER



Unit : mm

| No. | Check item | Criteria | | | | Remedy |
|-----|---|--------------------|-----------|-----------------|---|-------------------------|
| | | Standard size | | Repair limit | | |
| 1 | Outside diameter of flange | ø 193 | | - | | Rebuild or replace |
| 2 | Outside diameter of tread | ø 160 | | ø 148 | | |
| 3 | Width of tread | 46.5 | | 51.5 | | |
| 4 | Width of flange | 32 | | | | |
| 5 | Clearance between shaft and bushing | Standard size | Tolerance | | Standard clearance 0.35 to 0.455 | Clearance limit 1.5 |
| | | ø 60 | Shaft | Hole | | |
| 6 | Interference between roller and bushing | Standard size | Tolerance | | Standard Interference 0.056 to 0.132 | Interference limit - |
| | | ø 68 | Shaft | Hole | | |
| 7 | Side clearance of roller | Standard clearance | | Clearance limit | | Replace |
| | | 0.35 to 1.3 | | 1.5 | | |

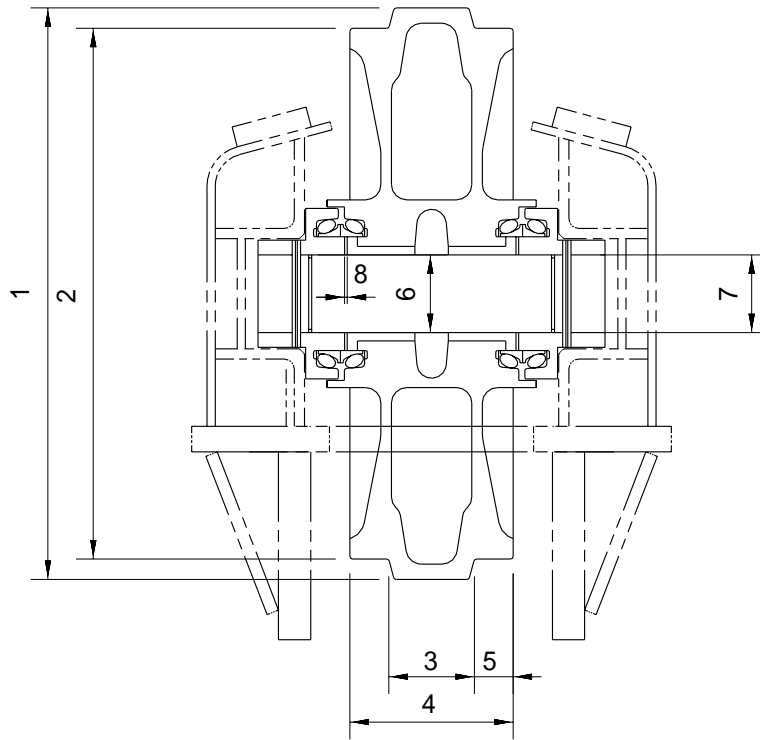
2) CARRIER ROLLER



Unit : mm

| No. | Check item | Criteria | | Remedy | |
|-----|---|---------------------------|-----------------------|-----------------------|---------|
| | | Standard size | Repair limit | | |
| 1 | Outside diameter of flange | ø 169 | - | Rebuild or replace | |
| 2 | Outside diameter of tread | ø 144 | ø 134 | | |
| 3 | Width of tread | 45.7 | 50.7 | | |
| 4 | Width of flange | 17 | - | | |
| 5 | Clearance between shaft and bearing | Standard size & tolerance | | Standard Interference | |
| | | Shaft | Bearing | | |
| | | ø 50 +0.033 +0.017 | ø 50 0 -0.012 | 0.017 to 0.045 | Replace |
| 6 | Interference between bearing and roller | Standard size & tolerance | | 0.018 to 0.073 | |
| | | Bearing | Hole | | |
| | | ø 82 0 -0.020 | ø 82 -0.038 -0.073 | 0.018 to 0.073 | Replace |

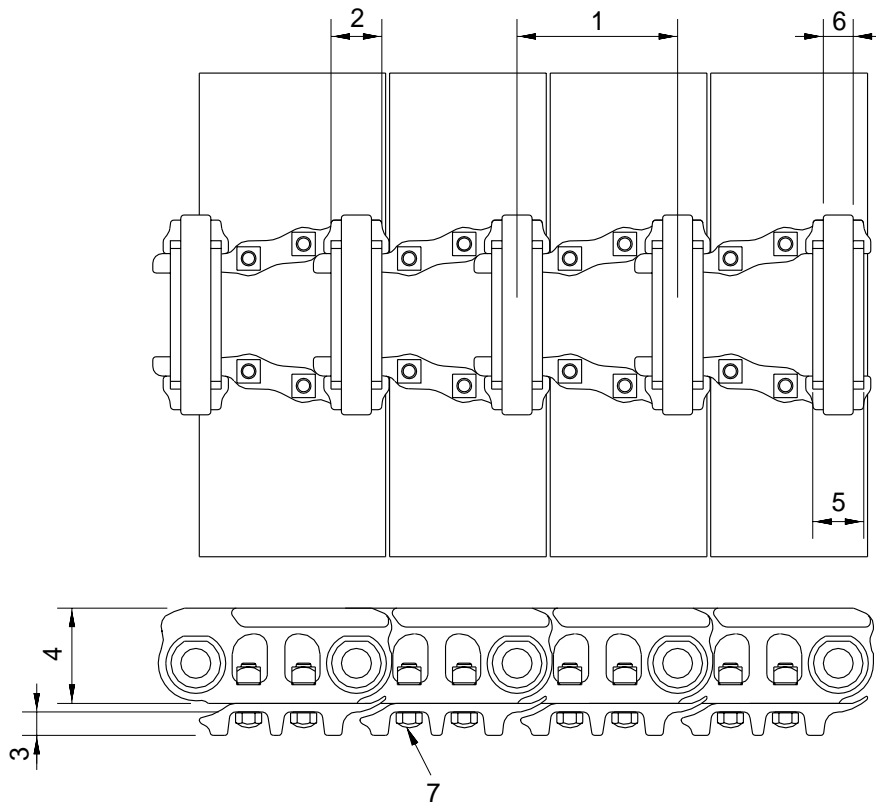
3) IDLER



Unit : mm

| No. | Check item | Criteria | | | | Remedy |
|-----|-------------------------------------|---|---|--------------------|-----------------|--------------------|
| | | Standard size | | Repair limit | | |
| 1 | Outside diameter of protrusion | ø 560 | | - | | Rebuild or replace |
| 2 | Outside diameter of tread | ø 520 | | ø 510 | | |
| 3 | Width of protrusion | 84 | | - | | |
| 4 | Total width | 160 | | - | | |
| 5 | Width of tread | 38 | | 45 | | |
| 6 | Clearance between shaft and bushing | Standard size & tolerance | | Standard clearance | Clearance limit | Replace bushing |
| | | Shaft | Hole | | | |
| 7 | Clearance between shaft and support | ø 65 $\begin{matrix} 0 \\ -0.03 \end{matrix}$ | ø 65 $\begin{matrix} +0.07 \\ +0.03 \end{matrix}$ | 0.03 to 0.1 | - | Replace |
| 8 | Side clearance of idler (both side) | Standard clearance | | Clearance limit | | Replace bushing |
| | | 0.65 to 1.2 | | 2.0 | | |

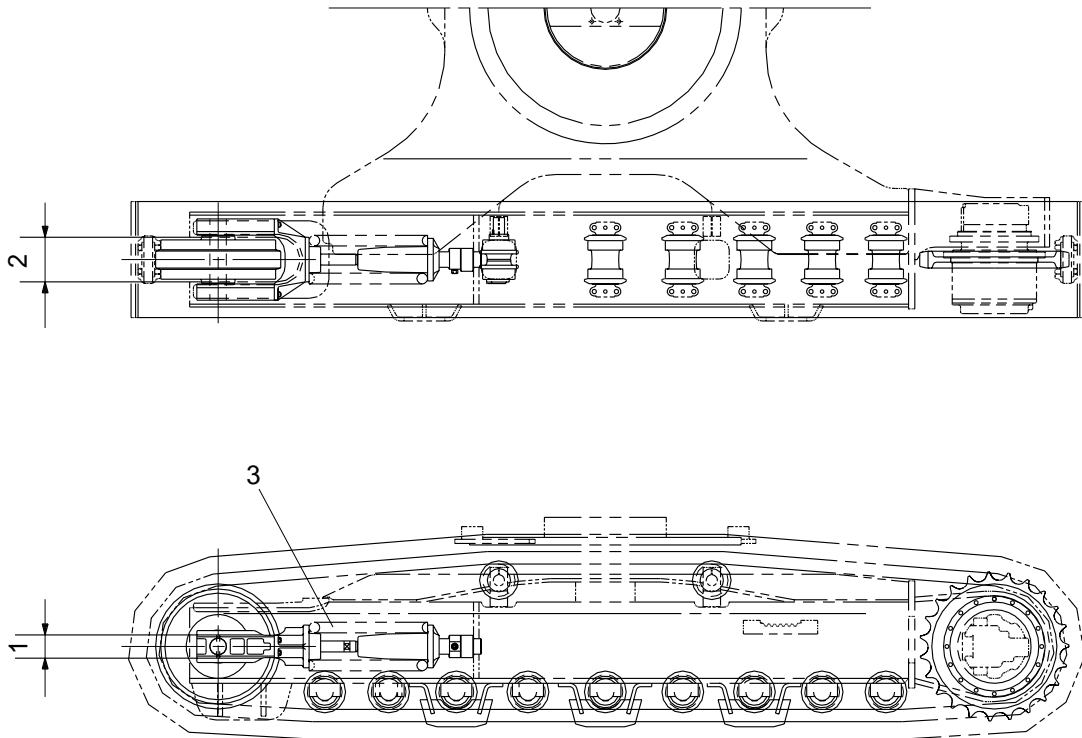
4) TRACK



Unit : mm

| No. | Check item | Criteria | | | | Remedy |
|-----|---|--|-------------------|-----------------------|--------------------|-----------------|
| | | Standard size | | Repair limit | | |
| 1 | Link pitch | 190 | | 201.2 | | Turn or replace |
| 2 | Outside diameter of bushing | ø 60 | | ø 54.4 | | |
| 3 | Height of grouser | 26 | | 16 | | Replace |
| 4 | Height of link | 105 ± 0.2 | | 101 | | |
| 5 | Interference between bushing and link | Standard size & tolerance | | Standard interference | Interference limit | Replace |
| | | Shaft | Hole | | | |
| | | ø 55 +0.38 +0.22 | ø 54.96 +0.1 0 | 0.16 to 0.42 | 0.0424 | |
| 6 | Interference between regular pin and link | ø 38 +0.18 +0.08 | ø 37.78 +0.1 0 | 0.20 to 0.40 | 0.1 | |
| 7 | Tightening torque | Initial tightening torque : 81 ± 4kg · m | | | | Check |

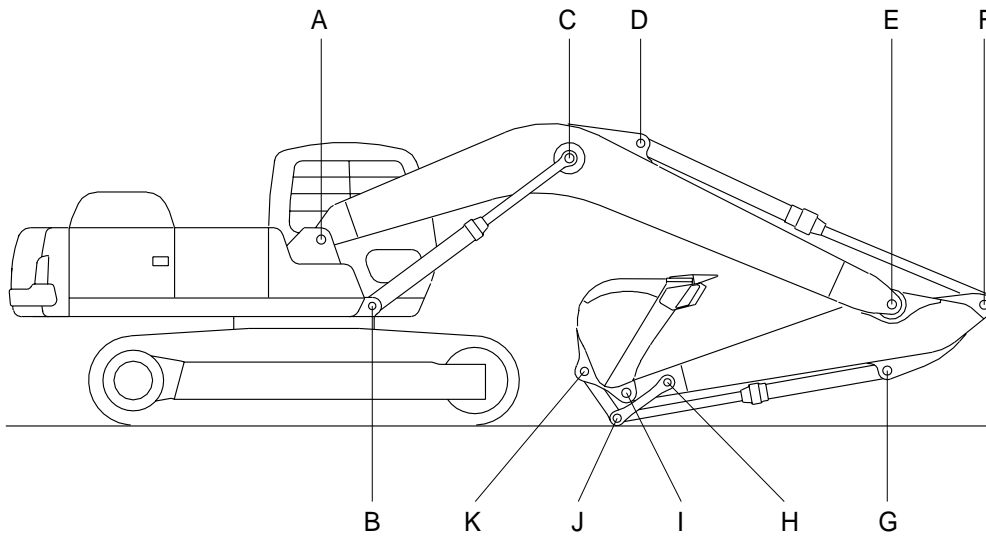
5) TRACK FRAME AND RECOIL SPRING



Unit : mm

| No. | Check item | Criteria | | | Remedy | | |
|-----|---------------------------------|---------------|---------------------|-------------------|-------------|--------------------|-------------------|
| | | | Standard size | Tolerance | | Repair limit | |
| 1 | Vertical width of idler guide | Track frame | 108 | +2 -1 | 112 | Rebuild or replace | |
| | | Idler support | 105 | -0.5 -1.0 | 101 | | |
| 2 | Horizontal width of idler guide | Track frame | 249 | +3 -1 | 254 | | |
| | | Idler support | 247 | 0 -0.5 | 244 | | |
| 3 | Recoil spring | Standard size | | Repair limit | | Replace | |
| | | Free length | Installation length | Installation load | Free length | | Installation load |
| | | ∅ 238 × 558 | 437 | 11132kg | - | | 8900kg |

2. WORK EQUIPMENT



Unit : mm

| Mark | Measuring point (Pin and Bushing) | Normal value | Pin | | Bushing | | Remedy & Remark |
|------|--------------------------------------|-----------------|-----------------------------|--------------------|-----------------------------|--------------------|-----------------------|
| | | | Recomm. service limit | Limit of use | Recomm. service limit | Limit of use | |
| A | Boom Rear | 75 | 74 | 73.5 | 75.5 | 76 | Replace |
| B | Boom Cylinder Head | 70 | 69 | 68.5 | 70.5 | 71 | " |
| C | Boom Cylinder Rod | 75 | 74 | 73.5 | 75.5 | 76 | " |
| D | Arm Cylinder Head | 70 | 69 | 68.5 | 70.5 | 71 | " |
| E | Boom Front | 75 | 74 | 73.5 | 75.5 | 76 | " |
| F | Arm Cylinder Rod | 70 | 69 | 68.5 | 70.5 | 71 | " |
| G | Bucket Cylinder Head | 70 | 69 | 68.5 | 70.5 | 71 | " |
| H | Arm Link | 70 | 69 | 68.5 | 70.5 | 71 | " |
| I | Bucket and Arm Link | 70 | 69 | 68.5 | 70.5 | 71 | " |
| J | Bucket Cylinder Rod | 70 | 69 | 68.5 | 70.5 | 71 | " |
| K | Bucket Link | 70 | 69 | 68.5 | 70.5 | 71 | " |