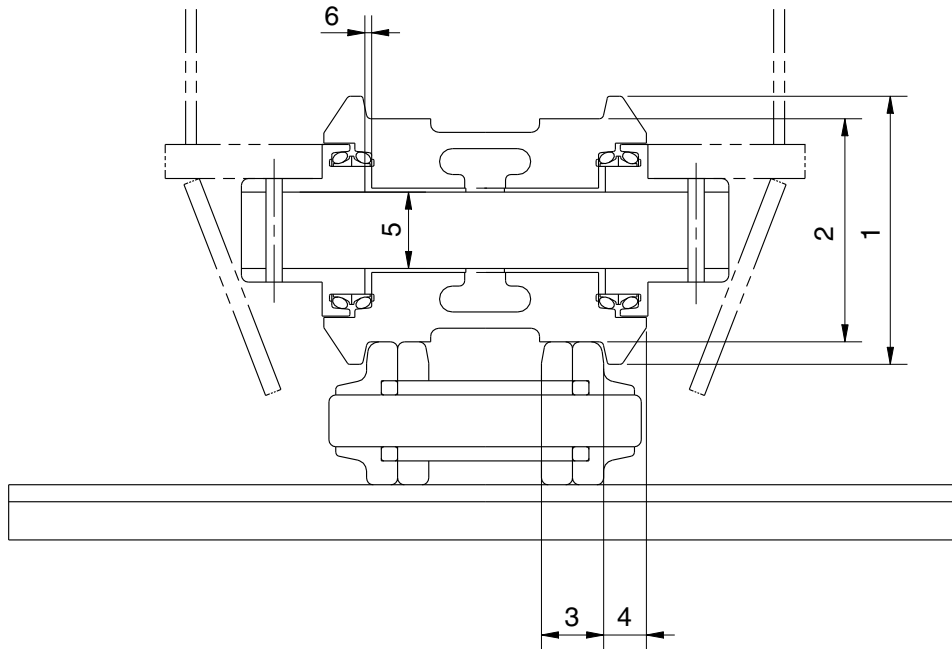


GROUP 3 TRACK AND WORK EQUIPMENT

1. TRACK

1) TRACK ROLLER

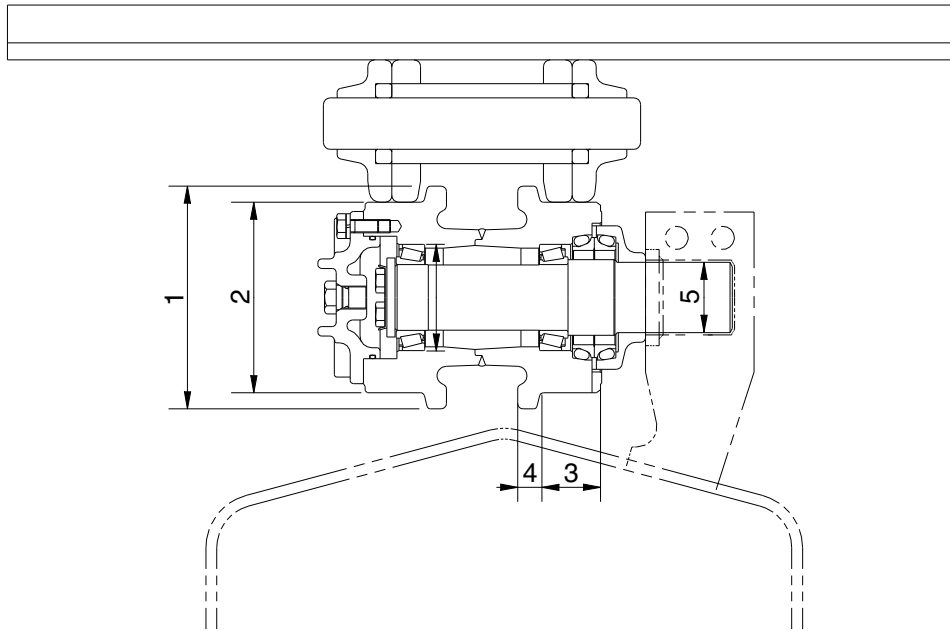


21037MS01

Unit : mm

No.	Check item	Criteria				Remedy
		Standard size		Repair limit		
1	Outside diameter of flange	Ø195		-		Rebuild or replace
2	Outside diameter of tread	Ø160		Ø148		
3	Width of tread	43.5		49.5		
4	Width of flange	20.5		-		
5	Clearance between shaft and bushing	Standard size & tolerance		Standard clearance	Clearance limit	Replace bushing
		Shaft	Hole			
		Ø 70 $\begin{matrix} -0.29 \\ -0.33 \end{matrix}$	Ø70.1 $\begin{matrix} +0.46 \\ 0 \end{matrix}$	0.39 to 0.476	2.0	
6	Side clearance of roller (both side)	Standard clearance		Clearance limit		Replace
		0.2 to 1.2		2.0		

2) CARRIER ROLLER

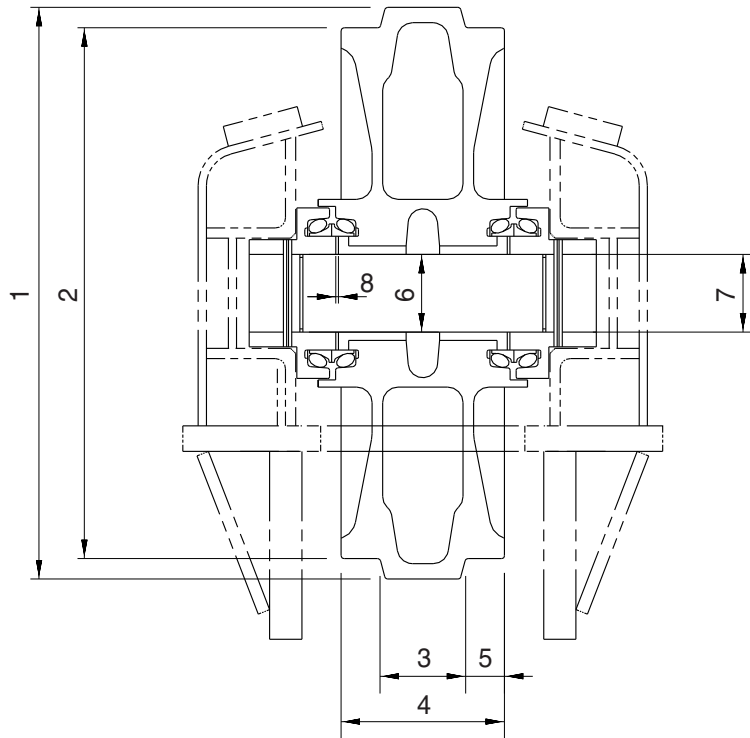


16077MSS02

Unit : mm

No.	Check item	Criteria			Remedy
		Standard size		Repair limit	
1	Outside diameter of flange	Ø169		Ø155	Rebuild or replace
2	Outside diameter of tread	Ø144		Ø134	
3	Width of tread	45.7		50.7	
4	Width of flange	17		-	
5	Clearance between shaft and bushing	Standard size & Tolerance		Standard clearance	Clearance limit
		Shaft	Hole		
		Ø55 -0.05 -0.1	Ø55 +0.3 +0.1	0.15 to 0.48	1.2

3) IDLER

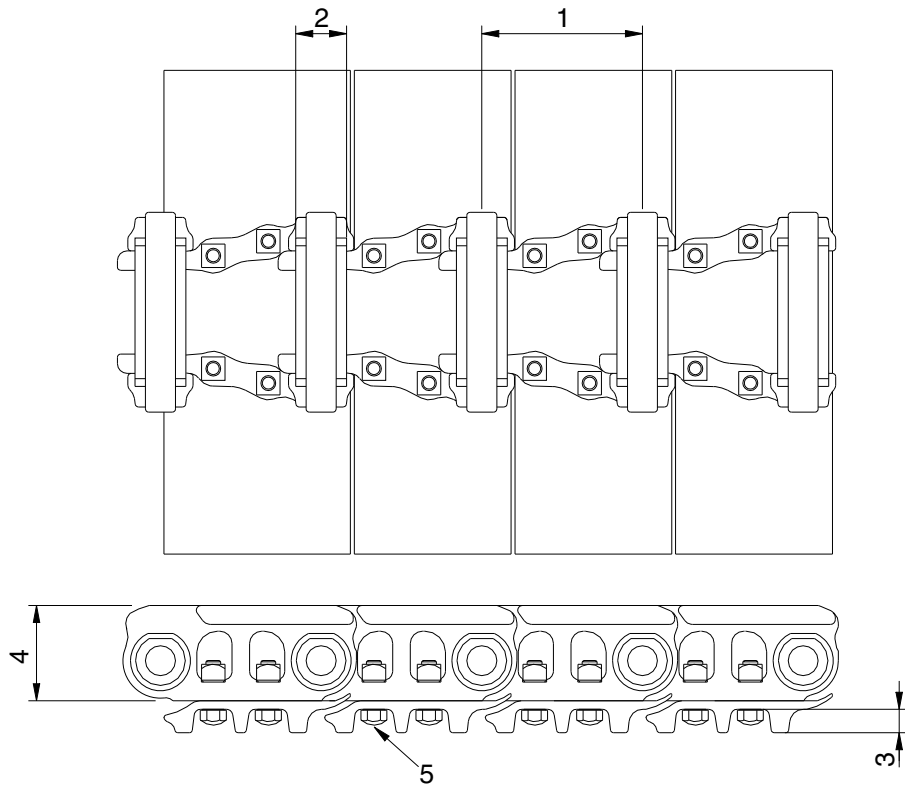


21037MS03

Unit : mm

No.	Check item	Criteria			Remedy	
		Standard size		Repair limit		
1	Outside diameter of flange	Ø560		-	Rebuild or replace	
2	Outside diameter of tread	Ø520		Ø510		
3	Width of protrusion	82		-		
4	Total width	160		-		
5	Width of tread	39		44		
6	Clearance between shaft and bushing	Standard size & Tolerance		Standard clearance	Clearance limit	
		Shaft	Hole			
		Ø75 $\begin{matrix} 0 \\ -0.03 \end{matrix}$	Ø75.35 $\begin{matrix} +0.05 \\ 0 \end{matrix}$	0.35 to 0.43	2.0	Replace bushing
7	Clearance between shaft and support	Ø75 $\begin{matrix} 0 \\ -0.03 \end{matrix}$	Ø75 $\begin{matrix} +0.07 \\ +0.03 \end{matrix}$	0.03 to 0.1	1.2	Replace
8	Side clearance of idler (both side)	Standard clearance		Clearance limit		
		0.2 to 0.6		2.0		

4) TRACK

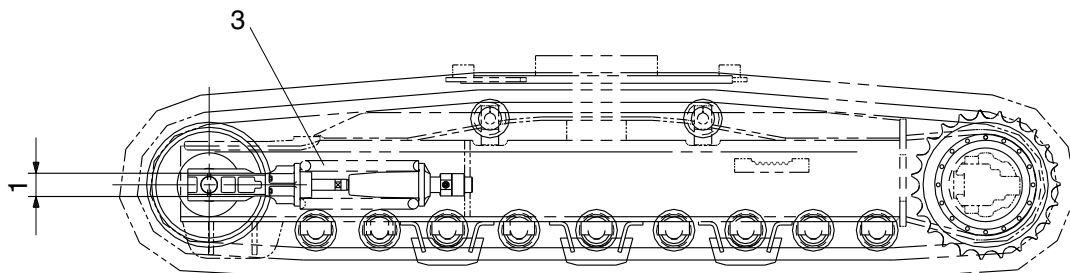
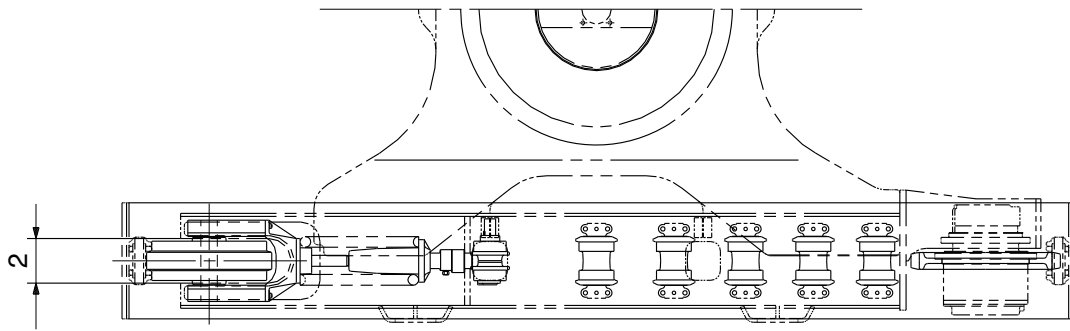


32077MS04

Unit : mm

No.	Check item	Criteria		Remedy
		Standard size	Repair limit	
1	Link pitch	171.45	178.95	Turn or replace
		Ø54	Ø46	
2	Outside diameter of bushing	25	16	Rebuild or replace
3	Height of grouser	101.6	93.6	
4	Height of link	Initial tightening torque : 40 ± 4 kgf·m		Retighten
5	Tightening torque			

5) TRACK FRAME AND RECOIL SPRING

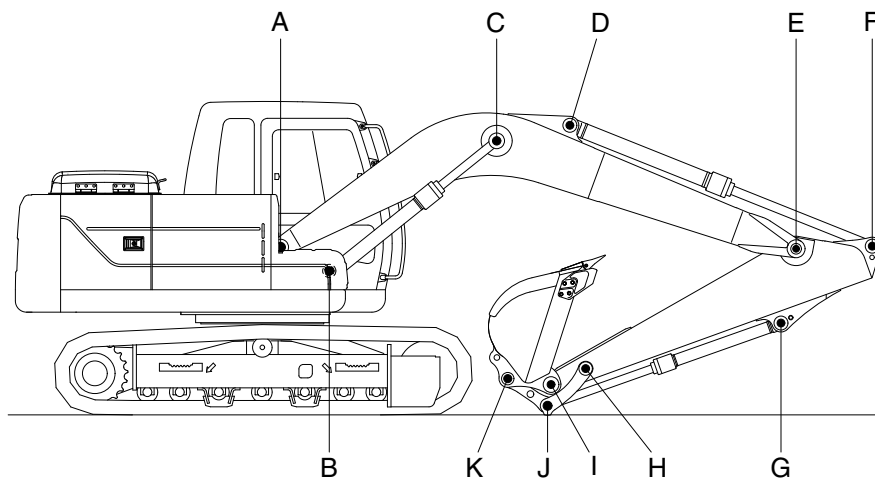


21037MS05

Unit : mm

No.	Check item	Criteria				Remedy	
			Standard size	Tolerance	Repair limit		
1	Vertical width of idler guide	Track frame	113	+2 0	117	Rebuild or replace	
		Idler support	110	-0.5 -1.0	106		
2	Horizontal width of idler guide	Track frame	272	+2 0	276		
		Idler support	270	-	267		
3	Recoil spring	Standard size		Repair limit		Replace	
		Free length	Installation length	Installation load	Free length		Installation load
		Ø225×552	420	11,908kg	-		9,526kg

2. WORK EQUIPMENT



16097MS01

Unit : mm

Mark	Measuring point (Pin and Bushing)	Normal value	Pin		Bushing		Remedy & Remark
			Recomm. service limit	Limit of use	Recomm. service limit	Limit of use	
A	Boom Rear	75	74	73.5	75.5	76	Replace
B	Boom Cylinder Head	70	69	68.5	70.5	71	"
C	Boom Cylinder Rod	75	74	73.5	75.5	76	"
D	Arm Cylinder Head	70	69	68.5	70.5	71	"
E	Boom Front	75	74	73.5	75.5	76	"
F	Arm Cylinder Rod	70	69	68.5	70.5	71	"
G	Bucket Cylinder Head	70	69	68.5	70.5	71	"
H	Arm Link	70	69	68.5	70.5	71	"
I	Bucket and Arm Link	70	69	68.5	70.5	71	"
J	Bucket Cylinder Rod	70	69	68.5	70.5	71	"
K	Bucket Link	70	69	68.5	70.5	71	"