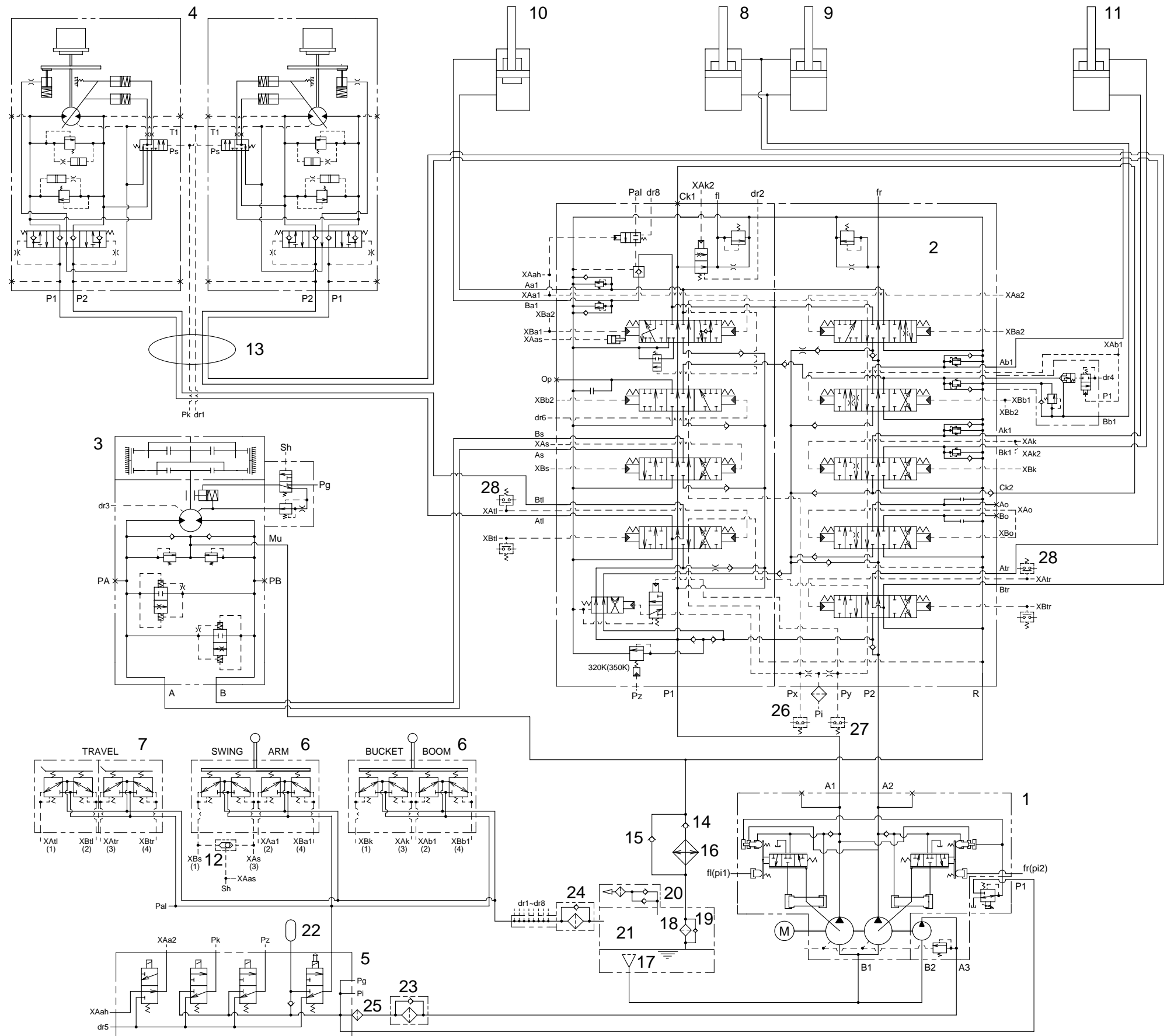


GROUP 1 HYDRAULIC CIRCUIT



- 1 Main pump
- 2 Main control valve
- 3 Swing motor
- 4 Travel motor
- 5 Solenoid valve
- 6 RCV lever
- 7 RCV pedal
- 8 Boom cylinder(RH)
- 9 Boom cylinder(LH)
- 10 Arm cylinder
- 11 Bucket cylinder
- 12 Shuttle valve
- 13 Turning joint
- 14 Check valve
- 15 Check valve
- 16 Oil cooler
- 17 Strainer
- 18 Return filter
- 19 Bypass valve
- 20 Air breather
- 21 Hydraulic tank
- 22 Accumulator
- 23 Line filter
- 24 Spin filter
- 25 Last guard filter
- 26 Last guard filter
- 27 Pressure switch
- 28 Pressure switch