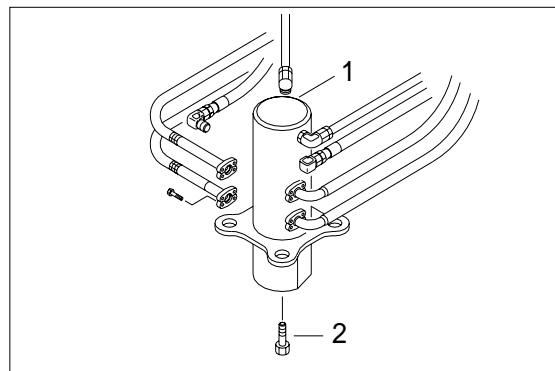


## GROUP 8 TURNING JOINT

### 1. REMOVAL AND INSTALL

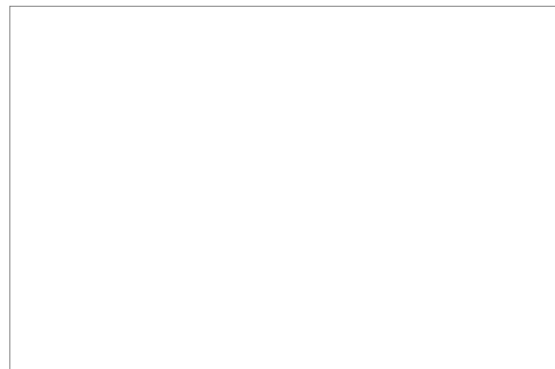
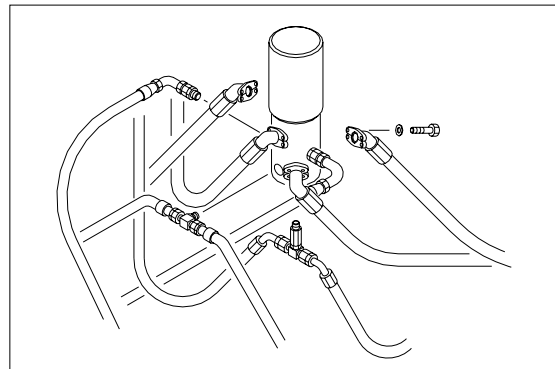
#### 1) REMOVAL

- (1) Lower the work equipment to the ground and stop the engine.
- (2) Loosen the breather slowly to release the pressure inside the hydraulic tank.
- ⚠ Escaping fluid under pressure can penetrate the skin causing serious injury.
- ※ When pipes and hoses are disconnected, the oil inside the piping will flow out, so catch it in oil pan.
- (3) Disconnect all hoses .
- (4) Sling the turning joint assembly (1) and remove the mounting bolt(2).
  - Weight : 36kg
  - Tightening torque : 12.2kgf · m(88 lbf · ft)
- (5) Remove the turning joint assembly.
- ※ When removing the turning joint, check that all the hoses have been disconnected.



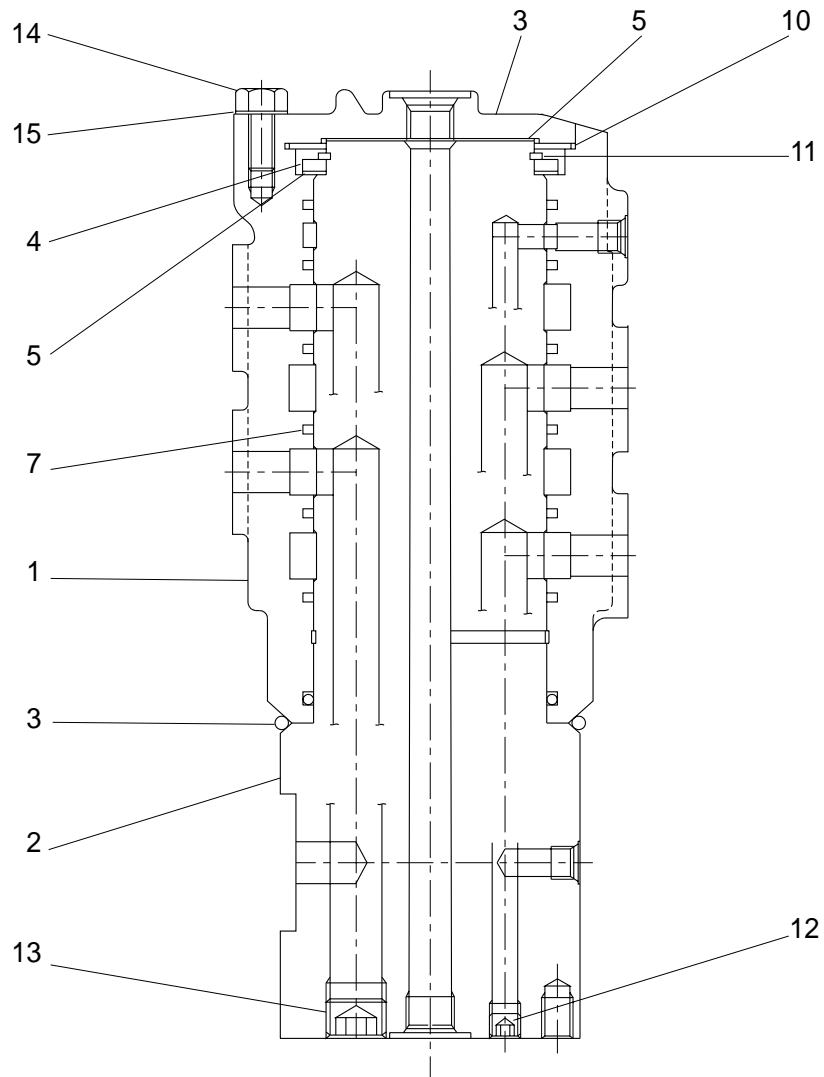
#### 2) INSTALL

- (1) Carry out installation in the reverse order to removal.
- ※ Take care of turning joint direction.
- ※ Assemble hoses to their original positions.
- ※ Confirmed the hydraulic oil level and check the hydraulic oil leak or not.



## 2. DISASSEMBLY AND ASSEMBLY

### 1) STRUCTURE

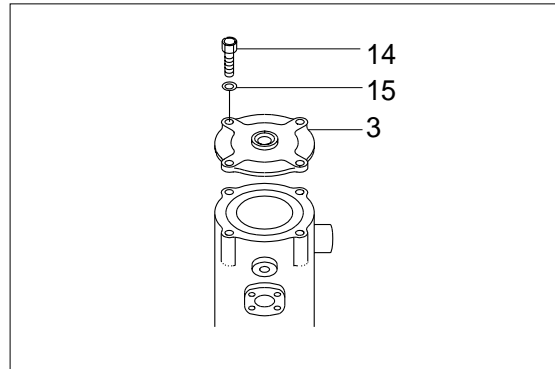


- |   |        |    |              |    |                   |
|---|--------|----|--------------|----|-------------------|
| 1 | Hub    | 6  | Shim         | 11 | Retaining ring    |
| 2 | Shaft  | 7  | Slipper seal | 12 | Plug              |
| 3 | Cover  | 8  | O-ring       | 13 | Plug              |
| 4 | Spacer | 9  | O-ring       | 14 | Hexagon head bolt |
| 5 | Shim   | 10 | O-ring       | 15 | Spring washer     |

## 2) DISASSEMBLY

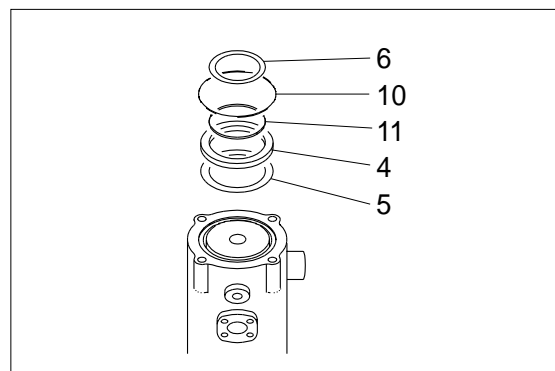
※ Before the disassembly, clean the turning joint.

(1) Remove bolts(14), washer(15) and cover (3).



(2) Remove shim(6) and O-ring(10).

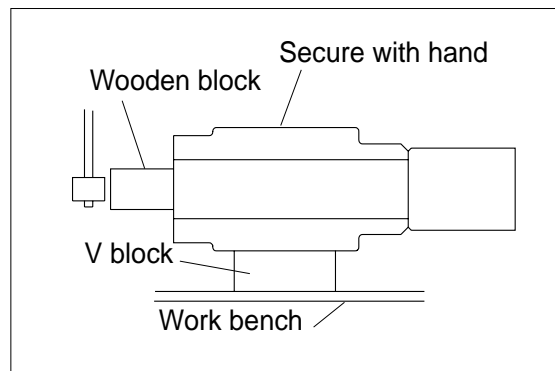
(3) Remove retaining(11), spacer(4) and shim (5).



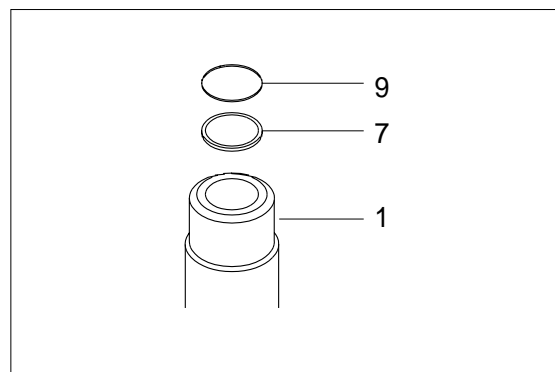
(4) Place body(1) on a V-block and by using a wood buffer at the shaft end, hit out shaft(2) to about 1/2 from the body. With a hammer.

※ Take care not to damage the shaft(2) when remove body(1) or rest it sideways.

※ Put a fitting mark on body(1) and shaft(2).



(5) Remove six slipper seals(7) and O-ring (9) from body(1).

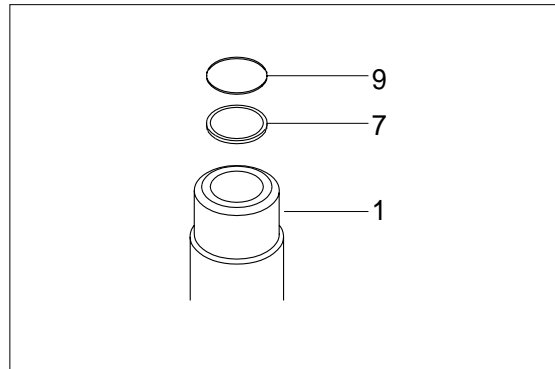


### 3) ASSEMBLY

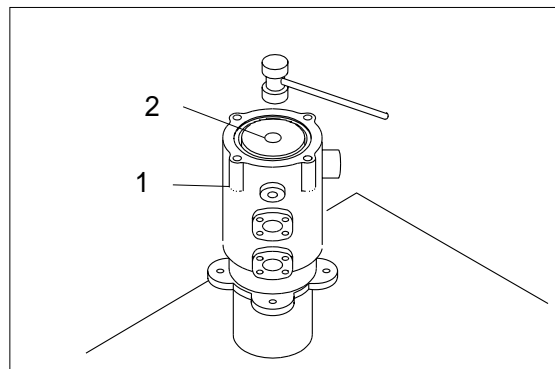
- ※ Clean all parts.
- ※ As a general rule, replace oil seals and O-ring.
- ※ Coat the sliding surfaces of all parts with engine oil or grease before installing.



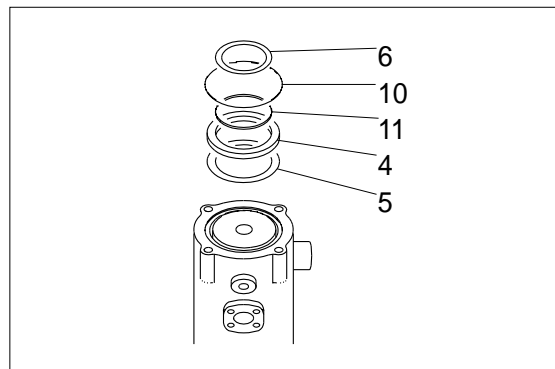
- (1) Fit six slipper seal(7) and O-ring(9) to body(1).
- (2) Fit O-ring(8) to shaft(2).



- (3) Set shaft(2) on block, tap body(1) with a plastic hammer to install.



- (4) Fit shim(5), spacer(4) and retaining ring (11) to shaft(2).
- (5) Fit O-ring(10) to body(1).
- (6) Fit shim(6) to shaft(2).



(7) Install cover(3) to body(1) and tighten bolts(14).

· Torque : 5.5 ~ 12.5 kgf · m

