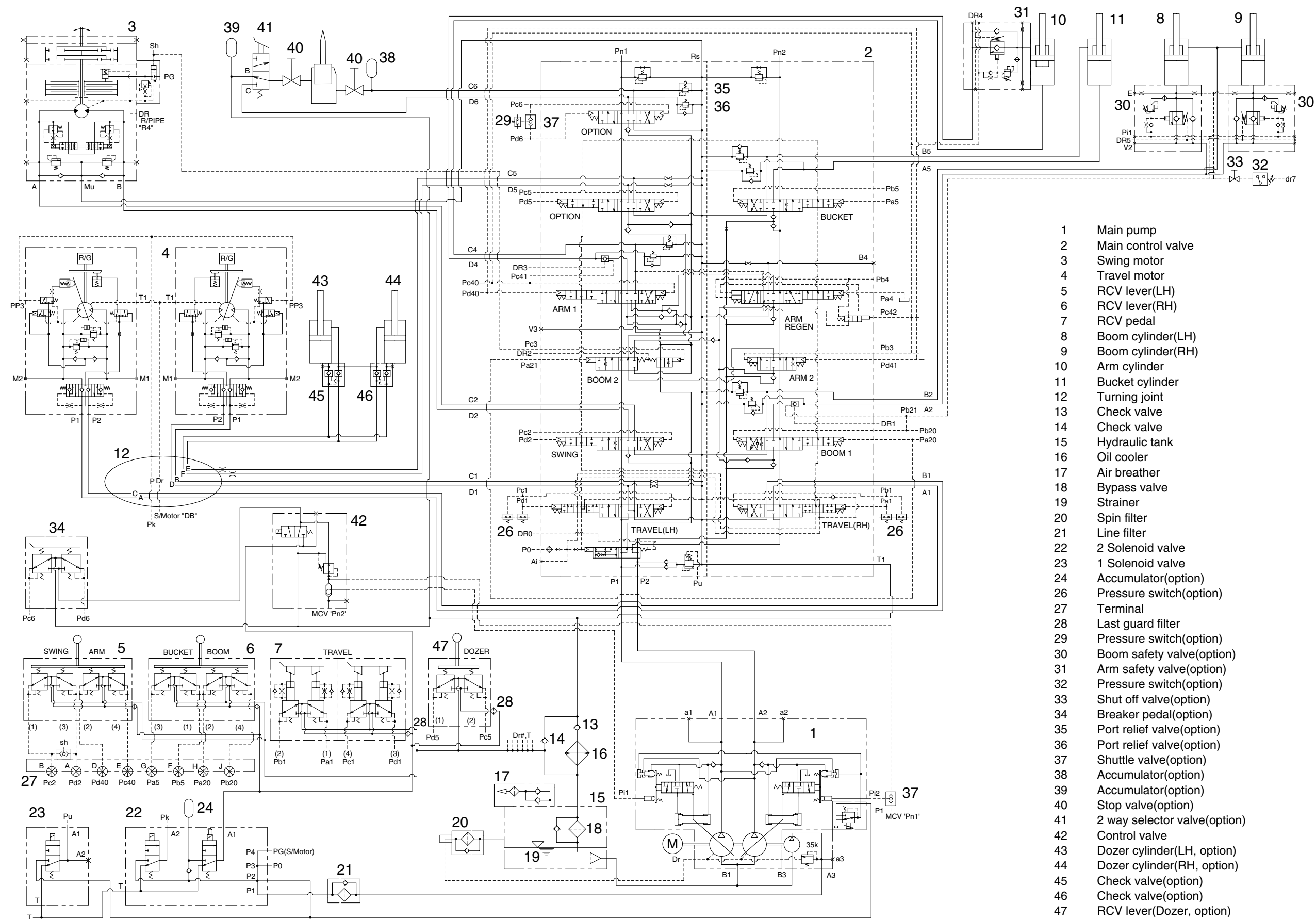


# SECTION 3 HYDRAULIC SYSTEM

## GROUP 1 HYDRAULIC CIRCUIT



- 1 Main pump
- 2 Main control valve
- 3 Swing motor
- 4 Travel motor
- 5 RCV lever(LH)
- 6 RCV lever(RH)
- 7 RCV pedal
- 8 Boom cylinder(LH)
- 9 Boom cylinder(RH)
- 10 Arm cylinder
- 11 Bucket cylinder
- 12 Turning joint
- 13 Check valve
- 14 Check valve
- 15 Hydraulic tank
- 16 Oil cooler
- 17 Air breather
- 18 Bypass valve
- 19 Strainer
- 20 Spin filter
- 21 Line filter
- 22 2 Solenoid valve
- 23 1 Solenoid valve
- 24 Accumulator(option)
- 26 Pressure switch(option)
- 27 Terminal
- 28 Last guard filter
- 29 Pressure switch(option)
- 30 Boom safety valve(option)
- 31 Arm safety valve(option)
- 32 Pressure switch(option)
- 33 Shut off valve(option)
- 34 Breaker pedal(option)
- 35 Port relief valve(option)
- 36 Port relief valve(option)
- 37 Shuttle valve(option)
- 38 Accumulator(option)
- 39 Accumulator(option)
- 40 Stop valve(option)
- 41 2 way selector valve(option)
- 42 Control valve
- 43 Dozer cylinder(LH, option)
- 44 Dozer cylinder(RH, option)
- 45 Check valve(option)
- 46 Check valve(option)
- 47 RCV lever(Dozer, option)