

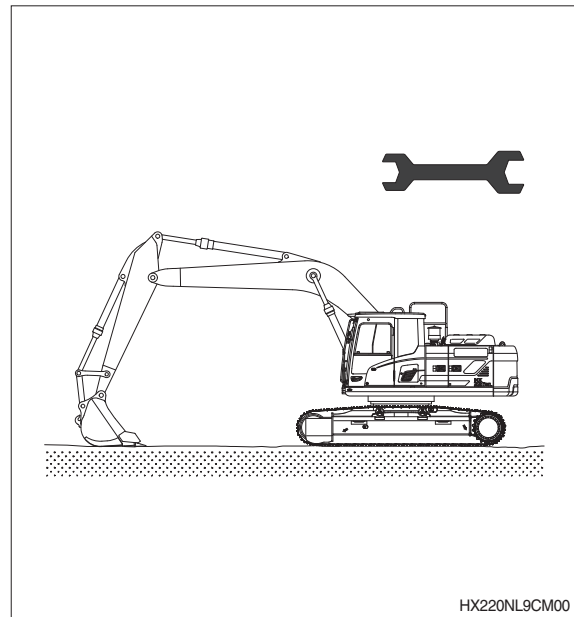
SECTION 9 COMPONENT MOUNTING TORQUE

Group 1	Introduction guide	9-1
Group 2	Engine system	9-2
Group 3	Electric system	9-4
Group 4	Hydraulic system	9-6
Group 5	Undercarriage	9-9
Group 6	Structure	9-10
Group 7	Work equipment	9-14

SECTION 9 COMPONENT MOUNTING TORQUE

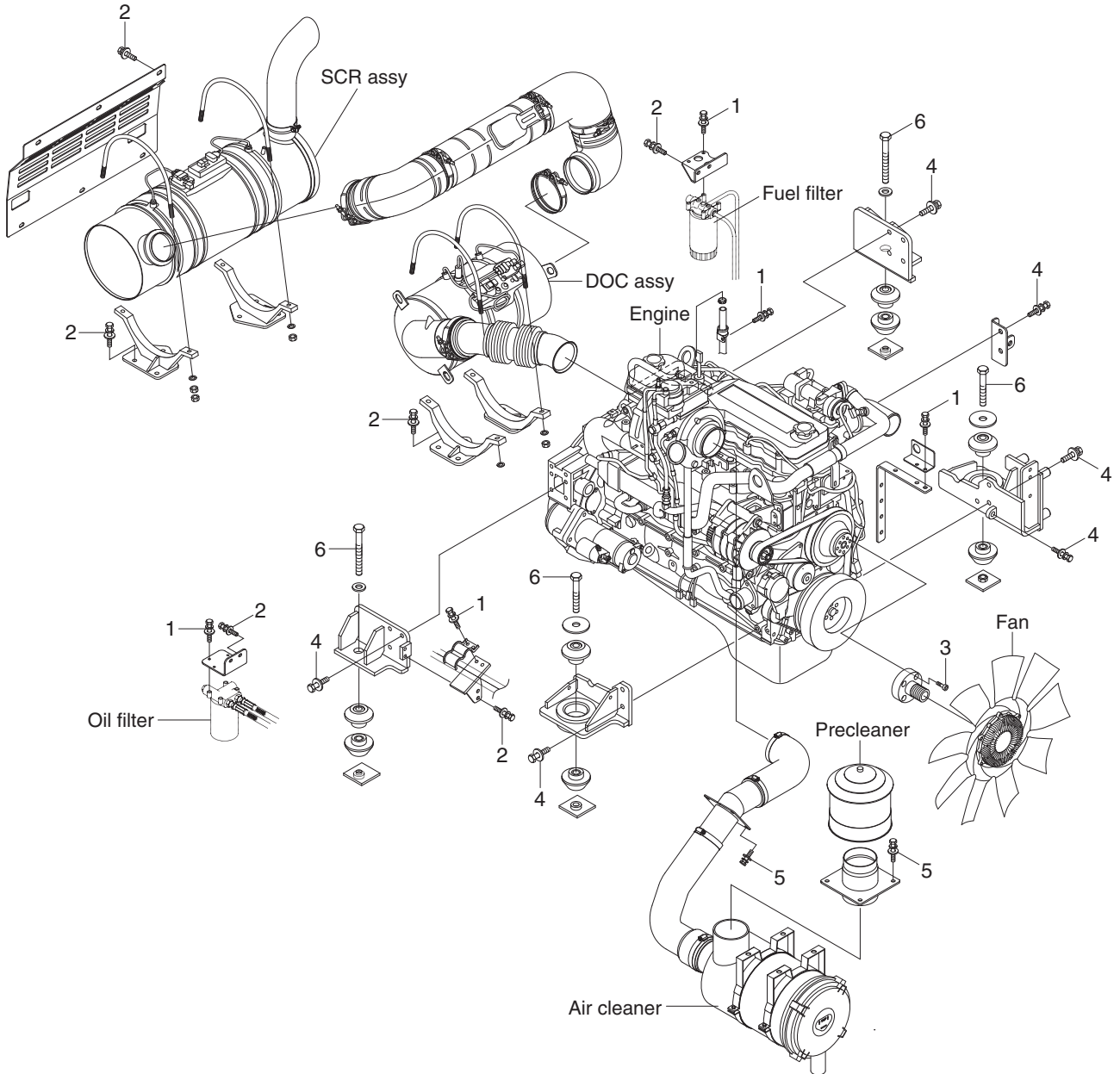
GROUP 1 INTRODUCTION GUIDE

1. This section shows bolt specifications and standard torque values needed when mounting components to the machine.
 2. Use genuine Hyundai spare parts.
We expressly point out that Hyundai will not accept any responsibility for defects resulted from non-genuine parts.
In such cases Hyundai cannot assume liability for any damage.
- ※ Only metric fasteners can be used and incorrect fasteners may result in machine damage or malfunction.
 - ※ Before installation, clean all the components with a non-corrosive cleaner. Bolts and threads must not be worn or damaged.



GROUP 2 ENGINE SYSTEM

ENGINE AND ACCESSORIES MOUNTING



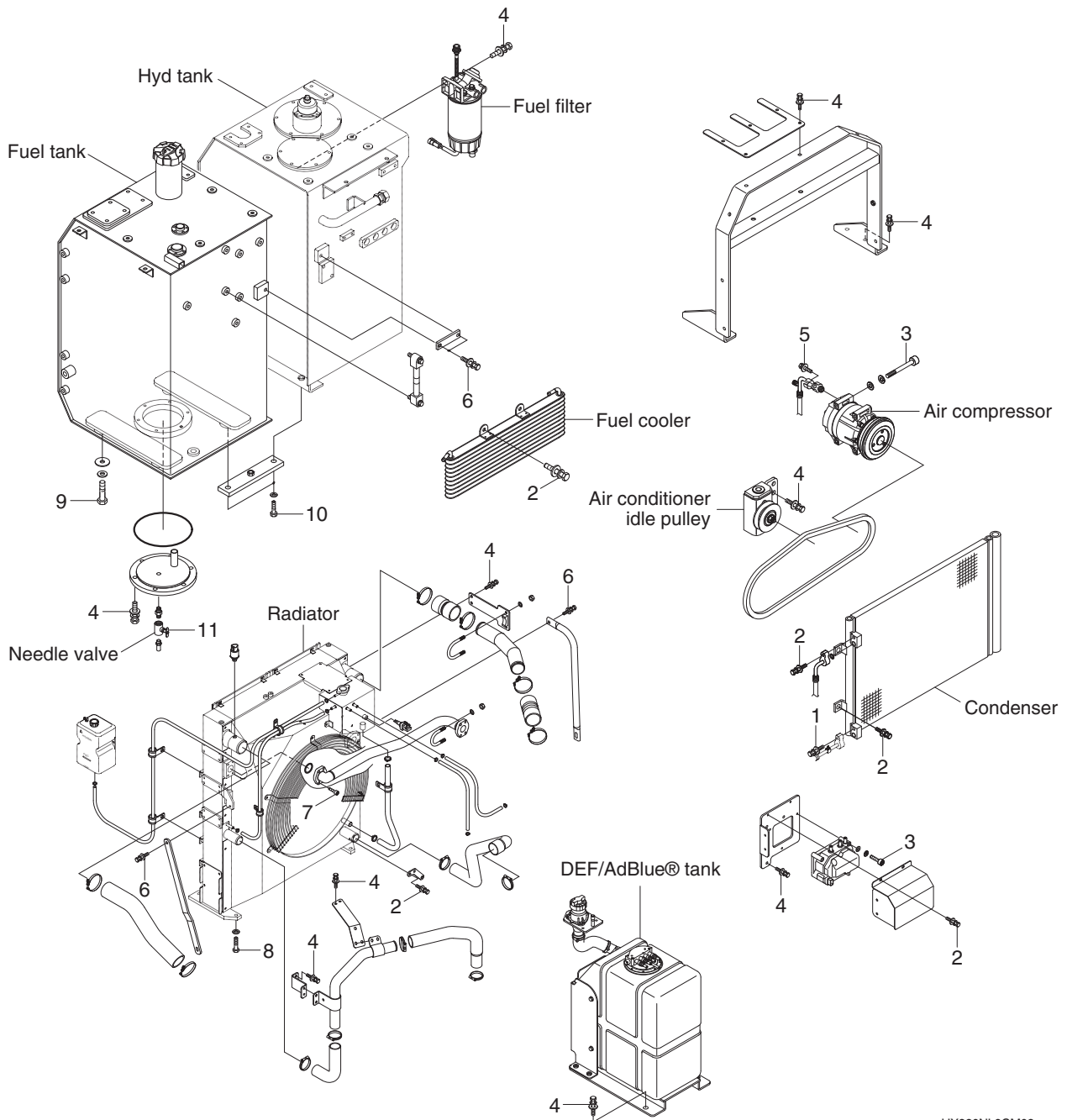
HX220NL9CM01

· Tightening torque

Item	Size	kgf · m	lbf · ft
1	M 8×1.25	2.5±0.5	18.1±3.6
2	M10×1.5	6.9±1.4	49.9±10.1
3	M10×1.5	8.27±1.7	59.8±12.3

Item	Size	kgf · m	lbf · ft
4	M12×1.75	11.5±1.0	82.8±7.2
5	M12×1.75	12.8±3.0	92.6±21.7
6	M20×2.5	52.1±5.0	377±36.2

COOLING SYSTEM AND FUEL TANK MOUNTING



HX220NL9CM02

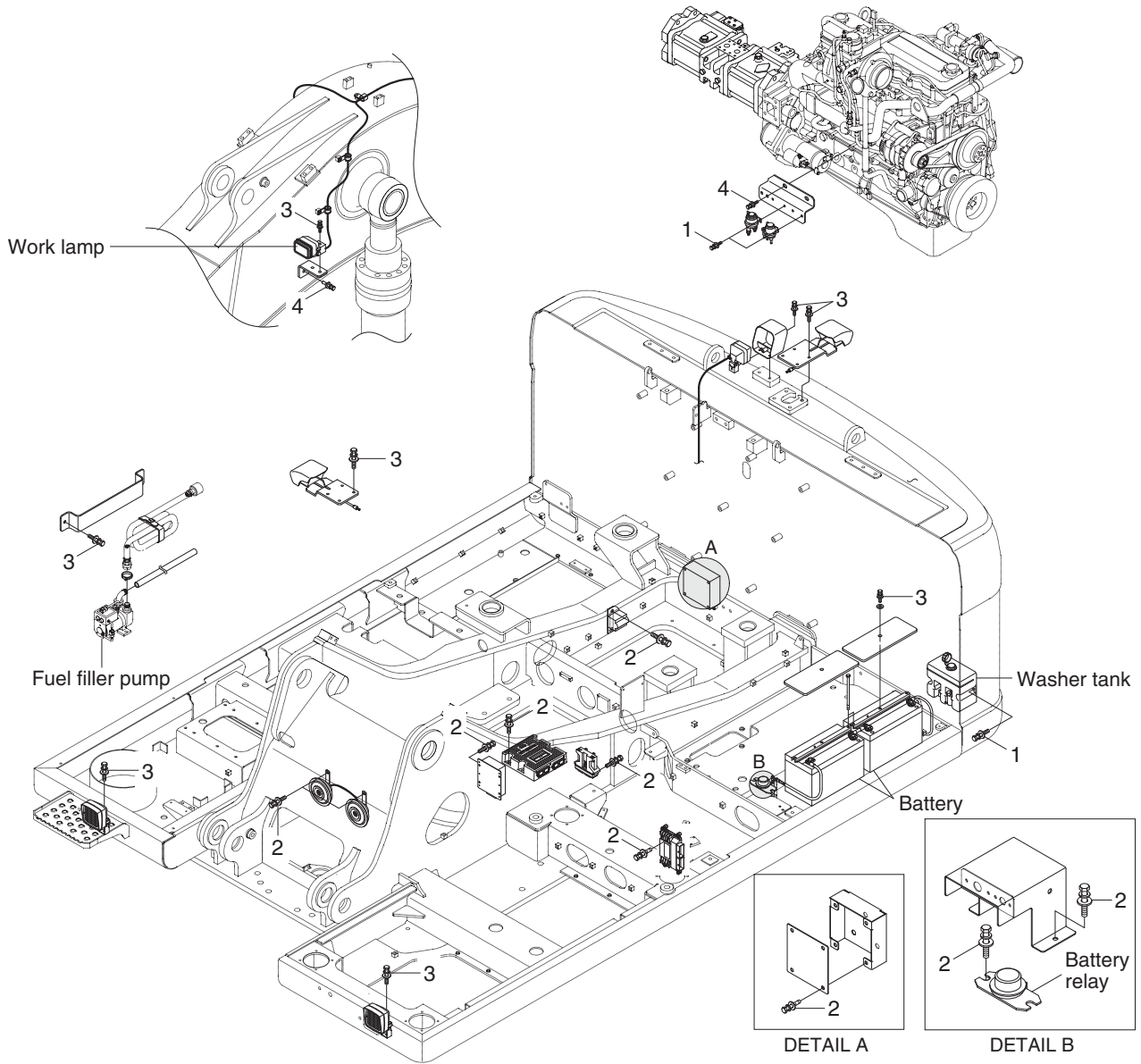
· Tightening torque

Item	Size	kgf · m	lbf · ft
1	M 6×1.0	1.05±0.2	7.6±1.45
2	M 8×1.25	2.5±0.5	18.1±3.6
3	M 8×1.25	4.05±0.8	29.3±5.8
4	M10×1.5	6.9±1.4	49.9±10.1
5	M10×1.25	7.4±1.5	53.5±10.8
6	M12×1.75	12.8±3.0	92.6±21.7

Item	Size	kgf · m	lbf · ft
7	M12×1.75	14.7±2.2	106±15.9
8	M16×2.0	29.7±4.5	215±32.5
9	M20×2.5	46±5.1	333±36.9
10	M20×2.5	57.9±8.7	419±62.9
11	-	2.3±0.6	16.6±4.3

GROUP 3 ELECTRIC SYSTEM

ELECTRIC COMPONENTS MOUNTING 1



HX220NL9CM03

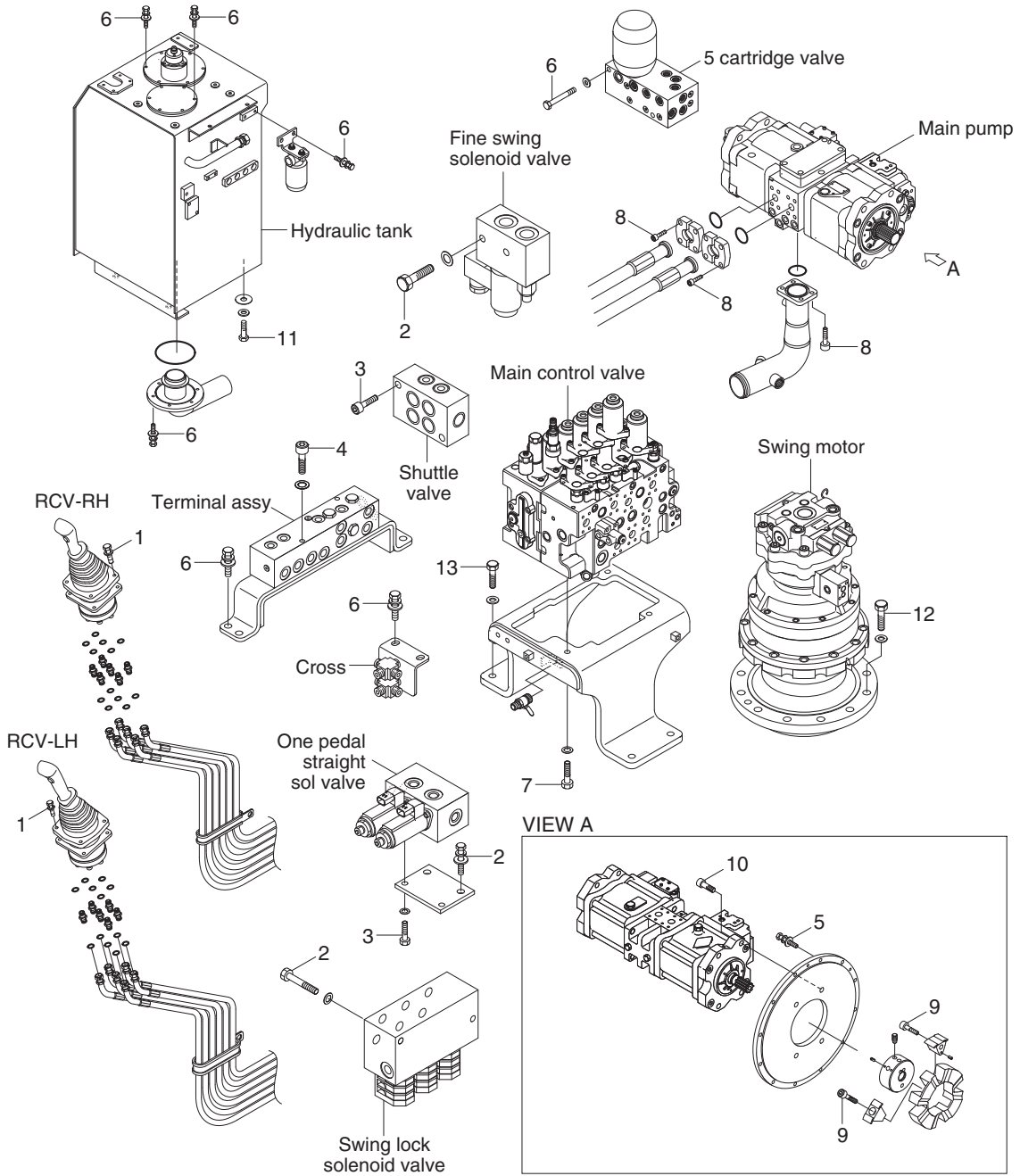
· Tightening torque

Item	Size	kgf · m	lbf · ft
1	M 6×1.0	1.05±0.2	7.6±1.45
2	M 8×1.25	2.5±0.5	18.1±3.6

Item	Size	kgf · m	lbf · ft
3	M10×1.5	6.9±1.4	49.9±10.1
4	M12×1.75	12.8±3.0	92.6±21.7

GROUP 4 HYDRAULIC SYSTEM

HYDRAULIC COMPONENTS MOUNTING 1



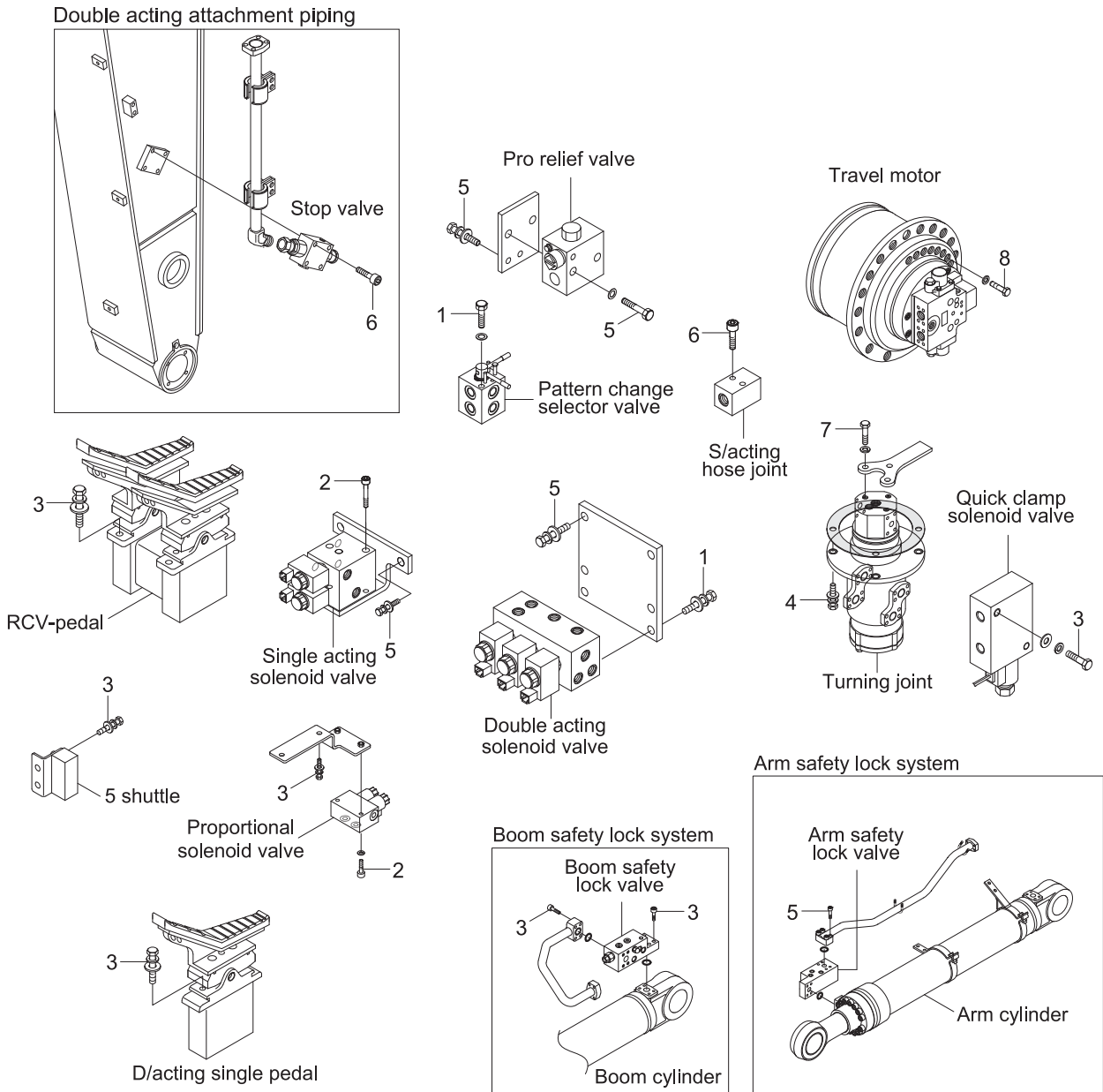
HX220NL9CM05

· Tightening torque

Item	Size	kgf · m	lbf · ft
1	M 6×1.0	1.05±0.2	7.6±1.45
2	M 8×1.25	2.5±0.5	18.1±3.6
3	M 8×1.25	3.43±0.7	24.8±5.1
4	M 8×1.25	4.05±0.8	29.3±5.8
5	M10×1.5	6.9±0.5	49.9±3.6
6	M10×1.5	6.9±1.4	49.9±10.1
7	M12×1.75	12.3±1.3	89±9.4

Item	Size	kgf · m	lbf · ft
8	M12×1.75	14.7±2.2	106±15.9
9	M18×2.5	32±1.0	231±7.2
10	M20×2.5	52.1±5	377±36.2
11	M20×2.5	46±5.1	333±36.9
12	M20×2.5	57.9±5.8	419±42
13	M20×2.5	57.9±8.7	419±62.9

HYDRAULIC COMPONENTS MOUNTING 2



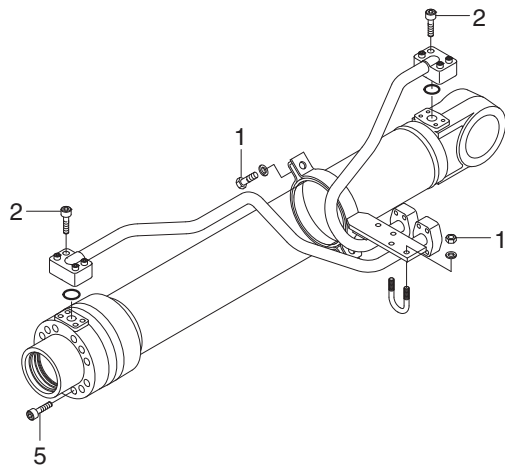
HX220NL9CM06

• Tightening torque

Item	Size	kgf · m	lbf · ft
1	M 8×1.25	2.5±0.5	18.1±3.6
2	M 8×1.25	4.05±0.8	29.3±5.8
3	M10×1.5	6.9±1.4	49.9±10.1
4	M12×1.75	12.3±1.3	89.0±9.4

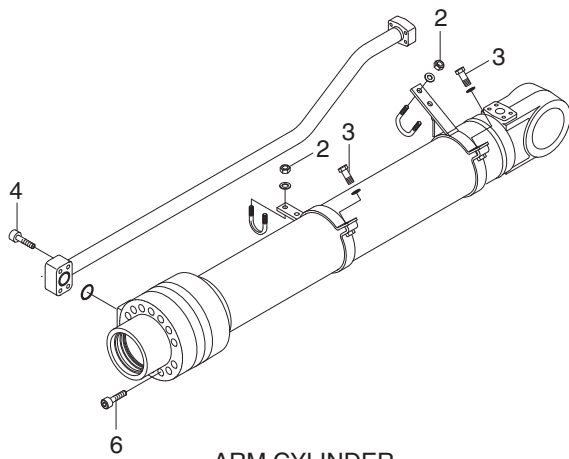
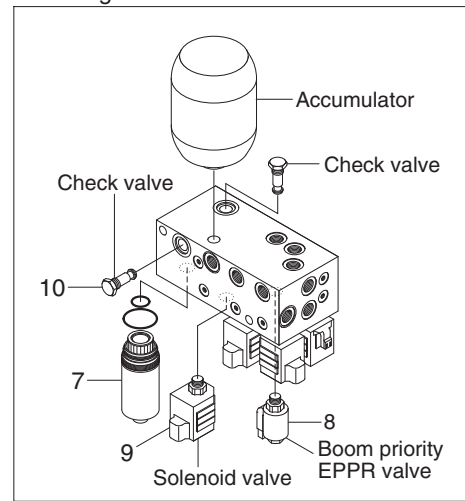
Item	Size	kgf · m	lbf · ft
5	M12×1.75	12.8±3.0	92.6±21.7
6	M12×1.75	14.7±2.2	106±15.9
7	M14×2.0	19.6±2.9	142±21.0
8	M16×2.0	29.7±4.5	215±32.5

HYDRAULIC COMPONENTS MOUNTING 3

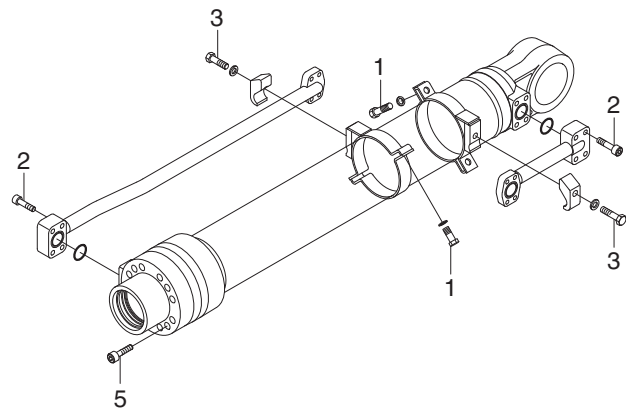


BOOM CYLINDER

5 cartridge valve



ARM CYLINDER



BUCKET CYLINDER

HX220NL9CM07

· Tightening torque

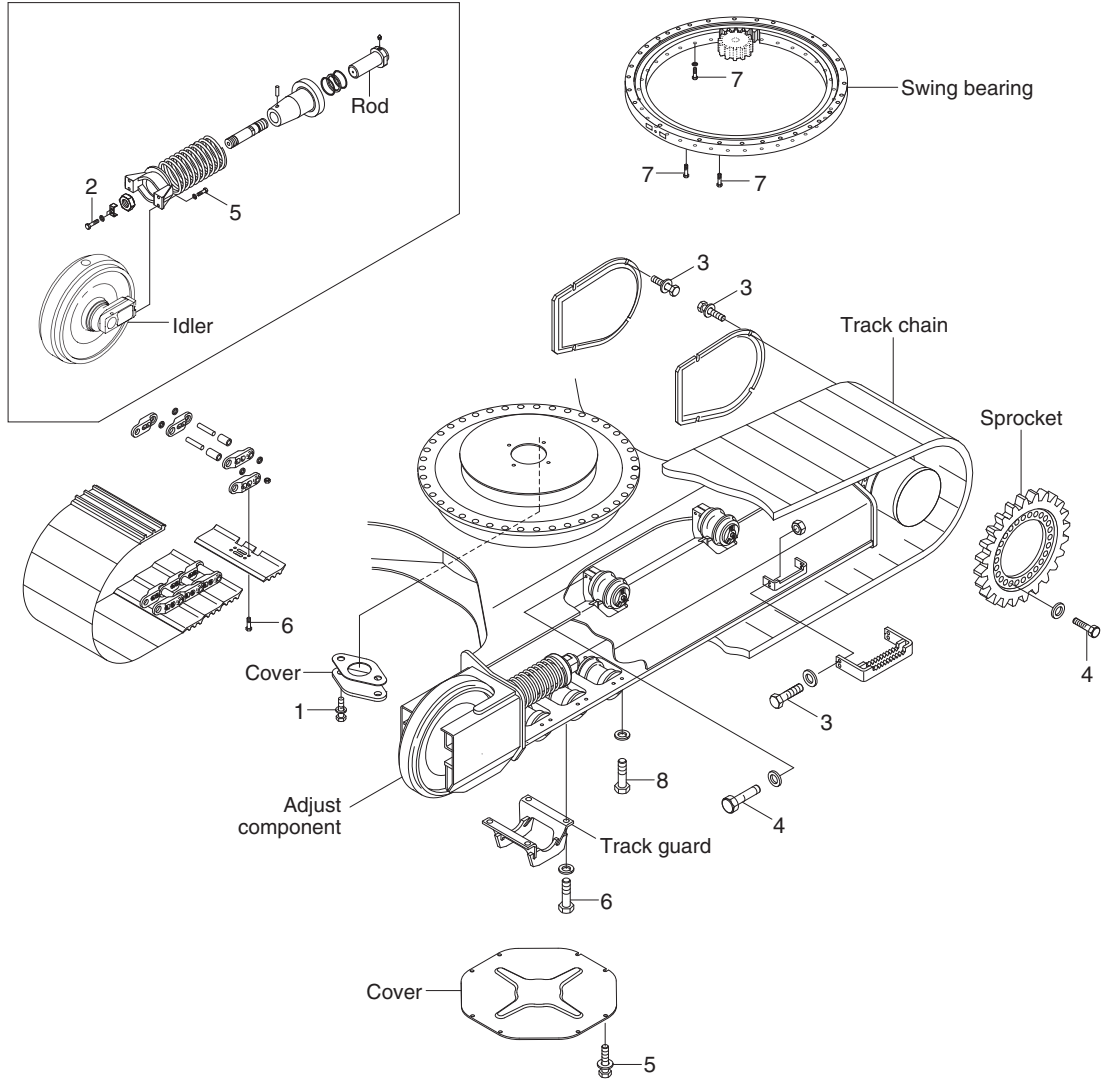
Item	Size	kgf · m	lbf · ft
1	M10×1.5	3.2±0.3	23.1±2.2
2	M10×1.5	5.4±0.5	39.1±3.6
3	M12×1.75	5.5±0.6	39.8±4.3
4	M12×1.75	9.4±1.0	68.0±7.2
5	M16×2.0	23±2.0	166±14.5

Item	Size	kgf · m	lbf · ft
6	M18×2.5	32±3.0	232±21.7
7	Line filter	2.5	18.1
8	EPPR valve	2.5	18.1
9	Solenoid valve	3.5	25.3
10	Check valve	4	28.9

GROUP 5 UNDERCARRIAGE

UNDERCARRIAGE MOUNTING

ADJUST COMPONENT



HX220NL9CM08

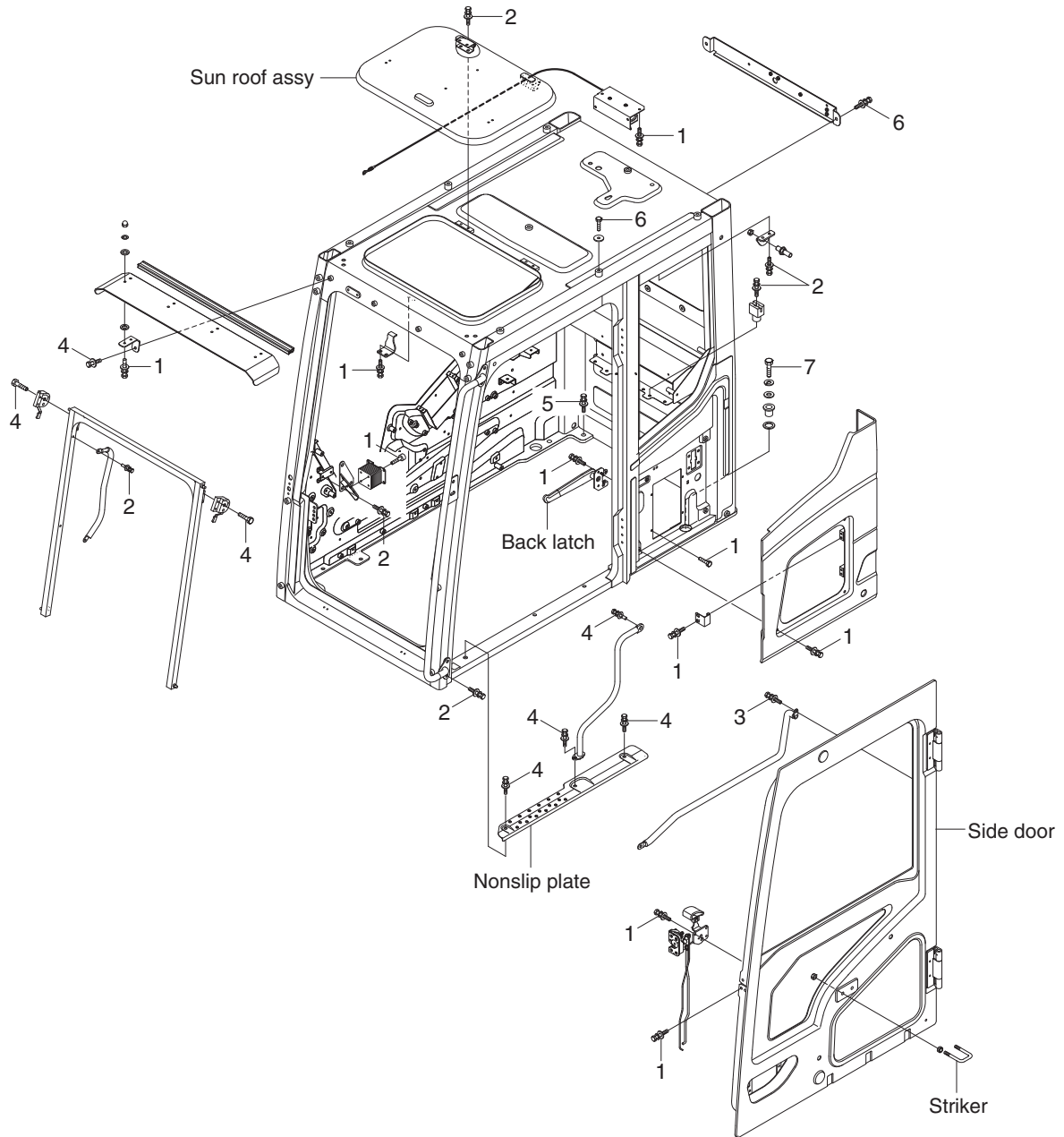
• Tightening torque

Item	Size	kgf · m	lbf · ft
1	M10×1.5	6.9±1.4	49.9±10.1
2	M12×1.25	13.3±2.7	96.2±19.5
3	M12×1.75	12.8±3.0	92.6±21.7
4	M16×2.0	29.7±3.0	215±21.7

Item	Size	kgf · m	lbf · ft
5	M16×2.0	29.7±4.5	215±32.5
6	M20×2.5	57.9±5.8	419±41.9
7	M20×2.5	57.9±6.0	419±43.3
8	M20×2.5	57.9±6.0	419±43.4

GROUP 6 STRUCTURE

CAB AND ACCESSORIES MOUNTING



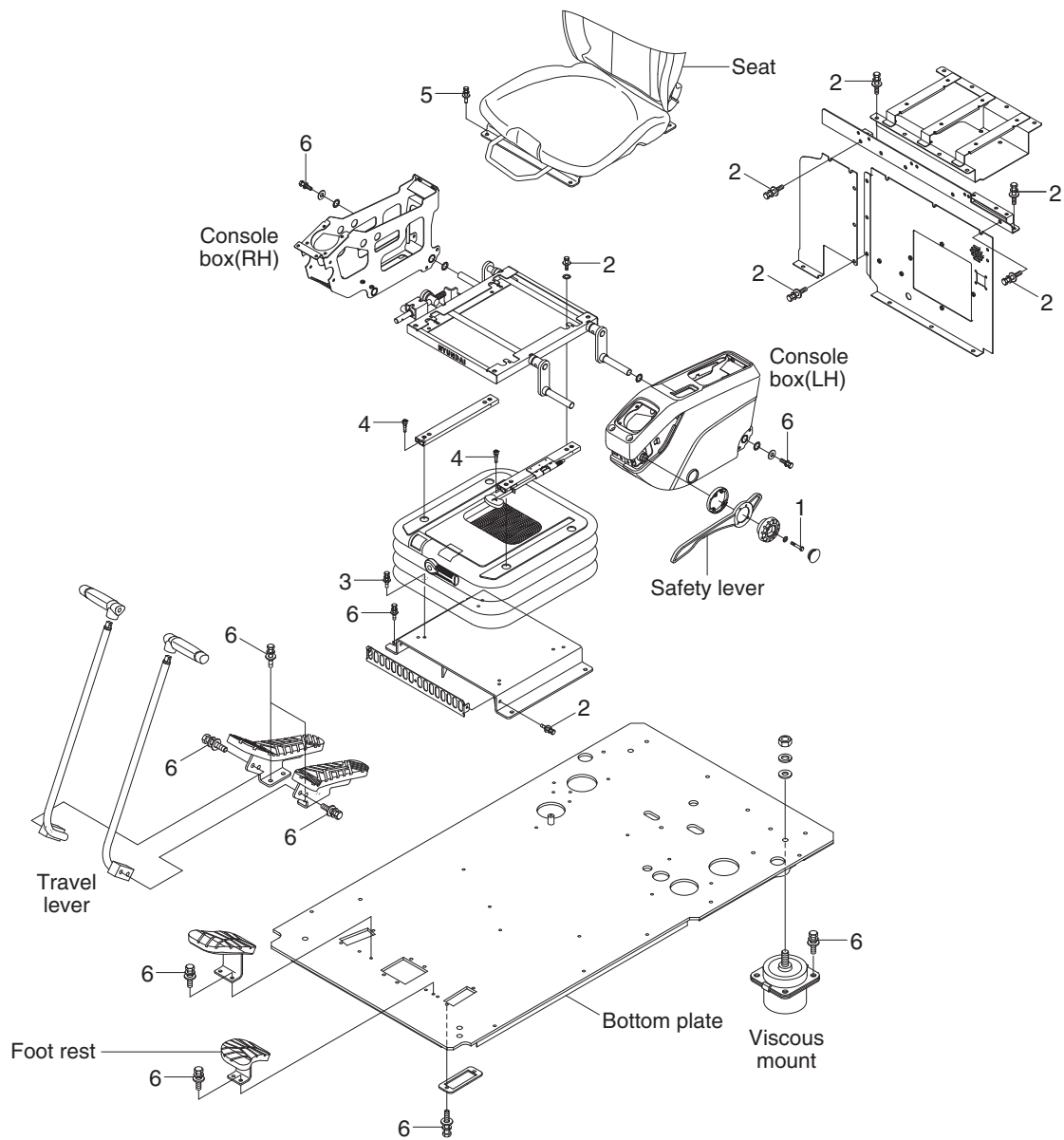
HX220NL9CM10

· Tightening torque

Item	Size	kgf · m	lbf · ft
1	M 6×1.0	1.05±0.2	7.6±1.45
2	M 8×1.25	2.5±0.5	18.1±3.6
3	M8×1.25	3.43±0.7	24.8±5.1
4	M10×1.5	6.9±1.4	49.9±10.1

Item	Size	kgf · m	lbf · ft
5	M12×1.75	12.3±1.3	88.9±9.4
6	M12×1.75	12.8±3.0	92.6±21.7
7	M24×3.0	100±15	723±109

CAB INTERIOR MOUNTING



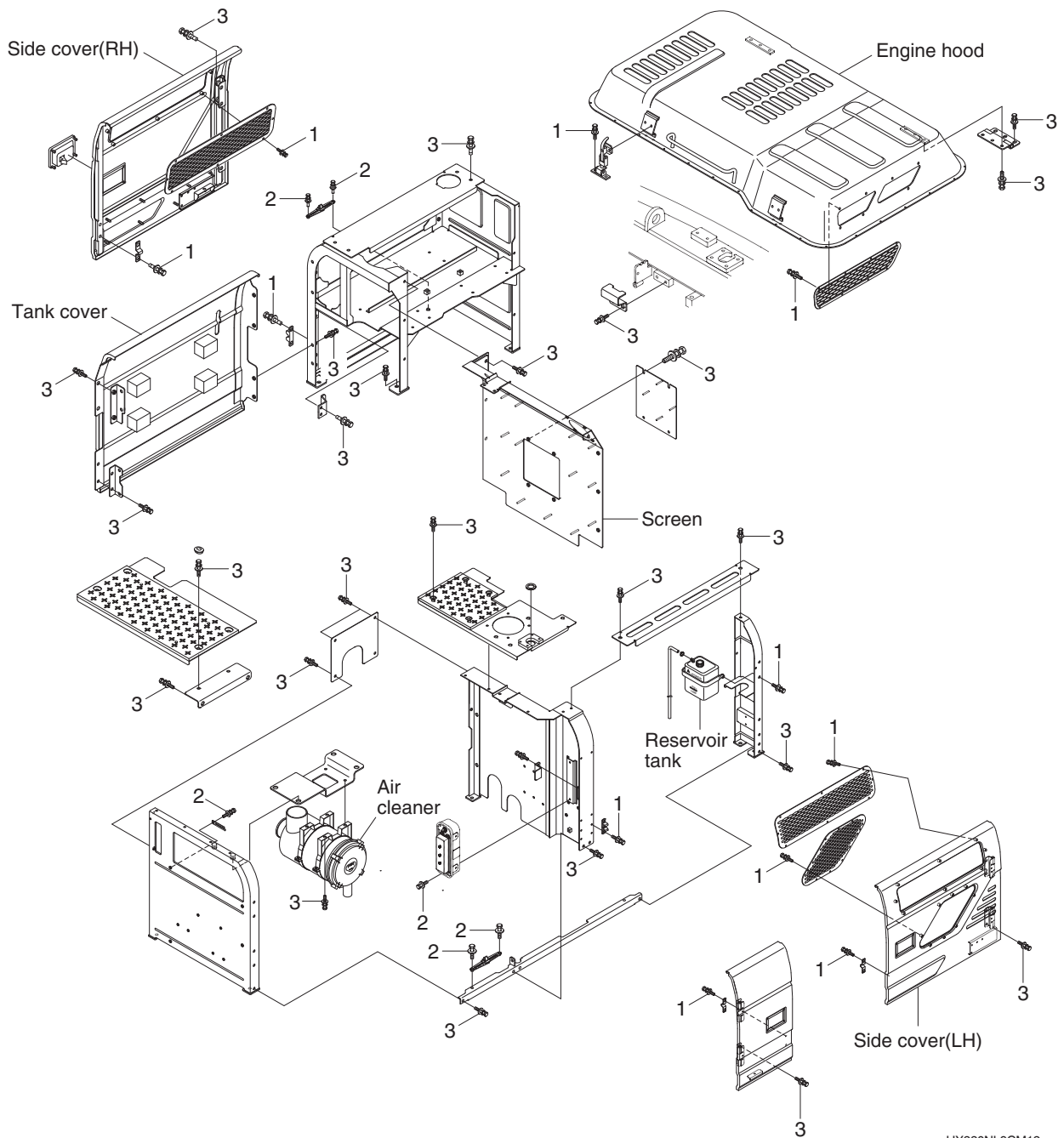
HX220NL9CM11

· Tightening torque

Item	Size	kgf · m	lbf · ft
1	M 6×1.0	1.05±0.2	7.6±1.45
2	M 8×1.25	2.5±0.5	18.1±3.6
3	M 8×1.25	3.43±0.7	24.8±5.1

Item	Size	kgf · m	lbf · ft
4	M 8×1.25	4.05±0.8	29.3±5.8
5	M10×1.5	6.9±0.5	49.9±3.6
6	M10×1.5	6.9±1.4	49.9±10.1

COWLING MOUNTING



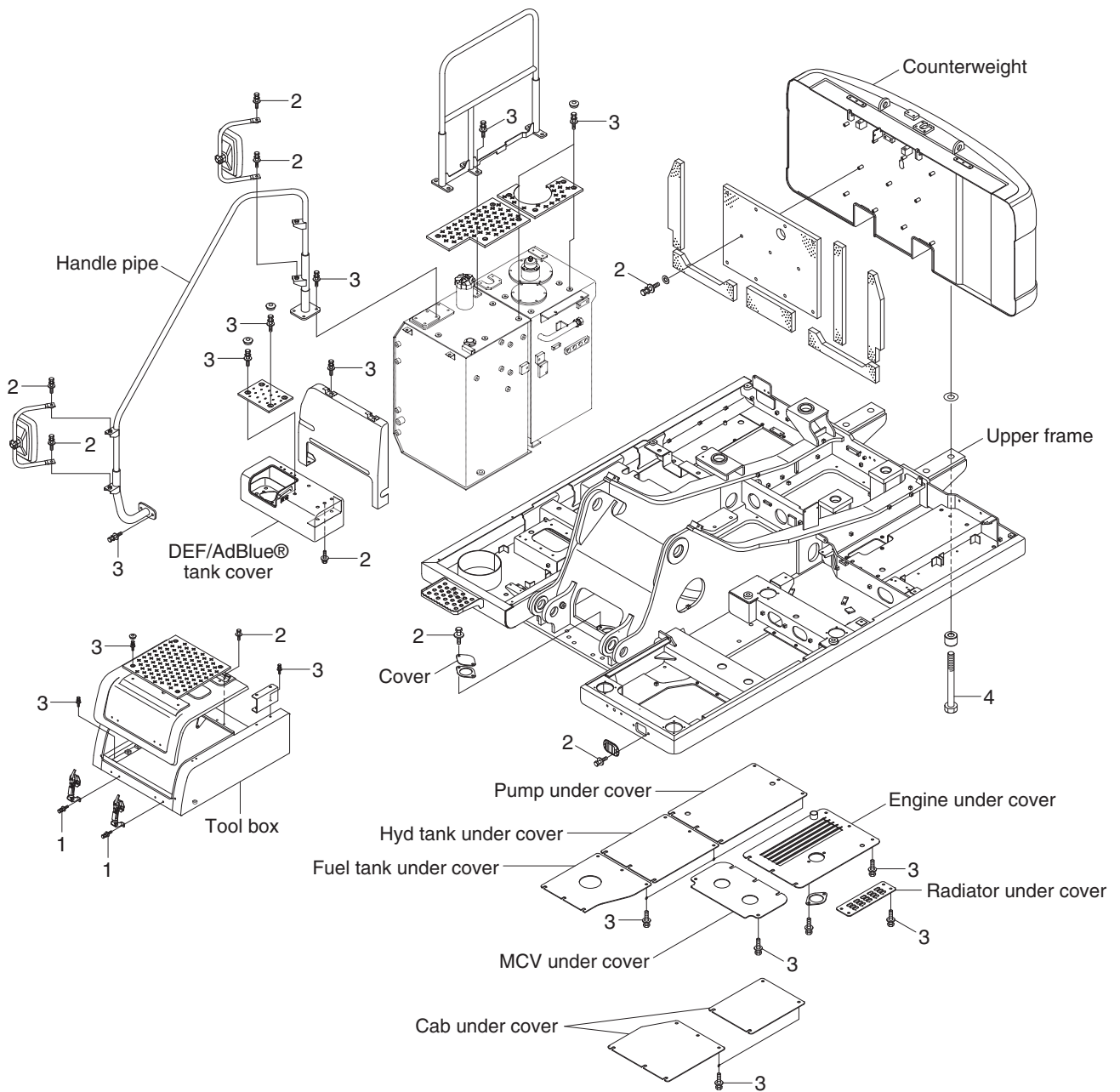
HX220NL9CM12

· Tightening torque

Item	Size	kgf · m	lbf · ft
1	M 8×1.25	2.5±0.5	18.1±3.6
2	M10×1.5	6.9±1.4	49.9±10.1

Item	Size	kgf · m	lbf · ft
3	M12×1.75	12.8±3.0	92.6±21.7

COUNTERWEIGHT AND COVERS MOUNTING



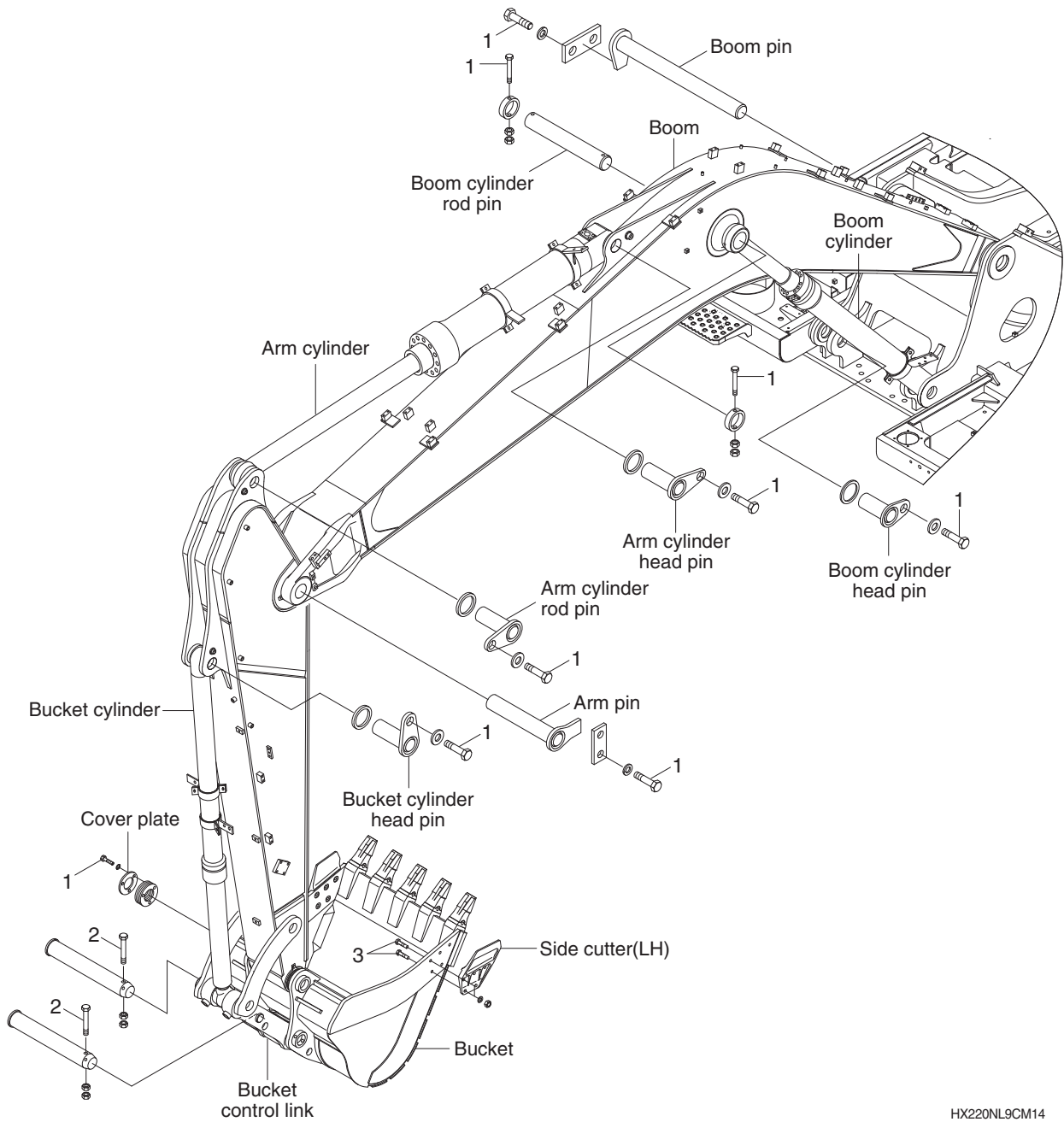
HX220NL9CM13

· Tightening torque

Item	Size	kgf · m	lbf · ft
1	M 8×1.25	2.5±0.5	18.1±3.6
2	M10×1.5	6.9±1.4	49.9±10.1

Item	Size	kgf · m	lbf · ft
3	M12×1.75	12.8±3.0	92.6±21.7
4	M36×3.0	337±33	2438±239

GROUP 7 WORK EQUIPMENT



HX220NL9CM14

· Tightening torque

Item	Size	kgf · m	lbf · ft
1	M16×2.0	29.7±4.5	215±32.5
2	M20×2.5	57.9±8.7	419±62.9
3	M22×2.5	81.9±16.1	592±116