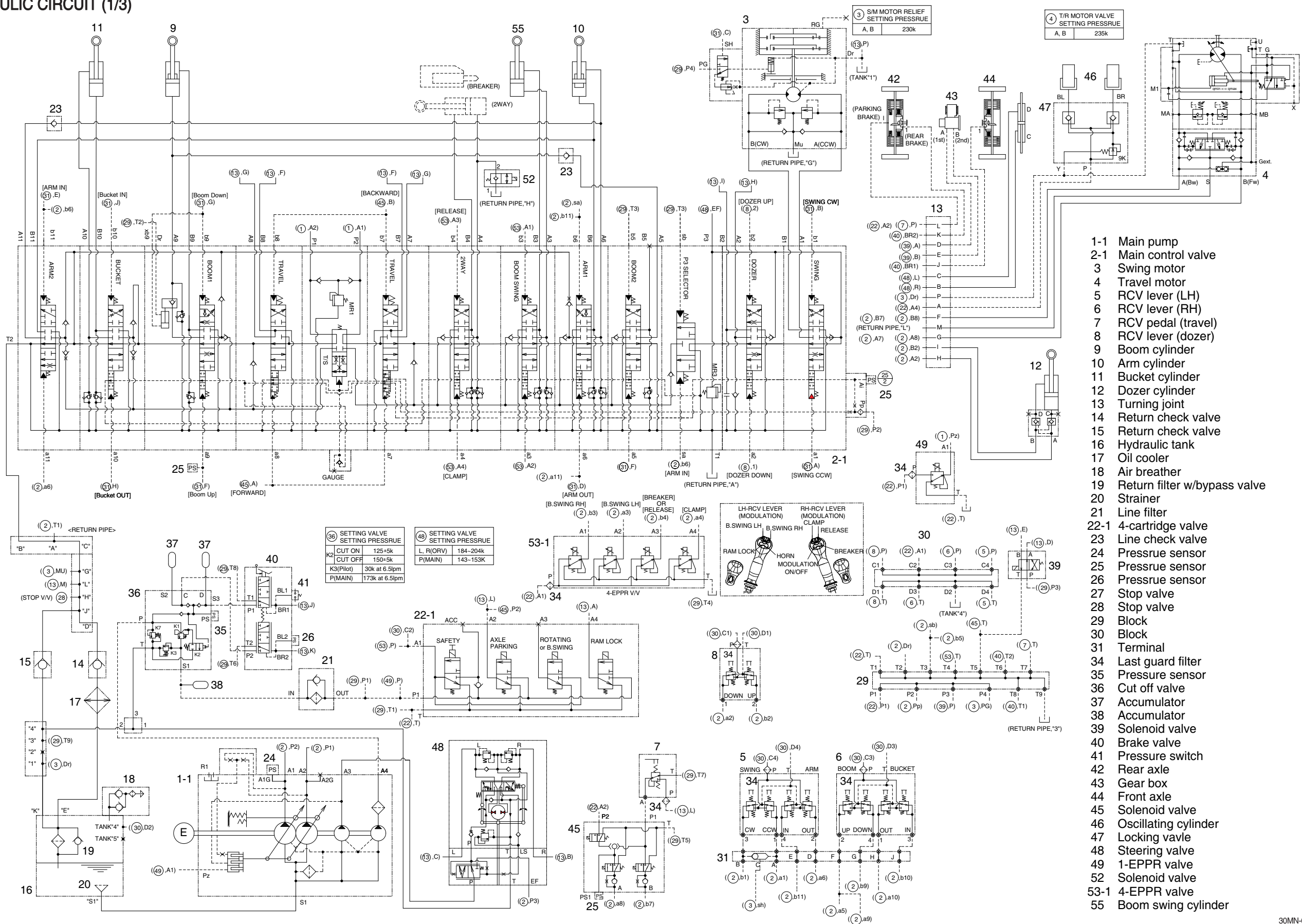


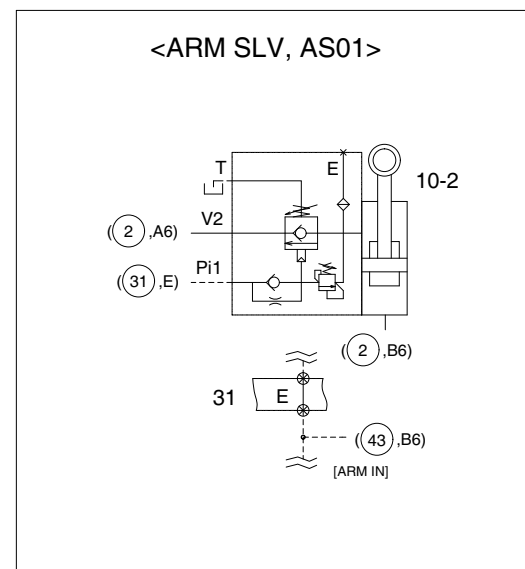
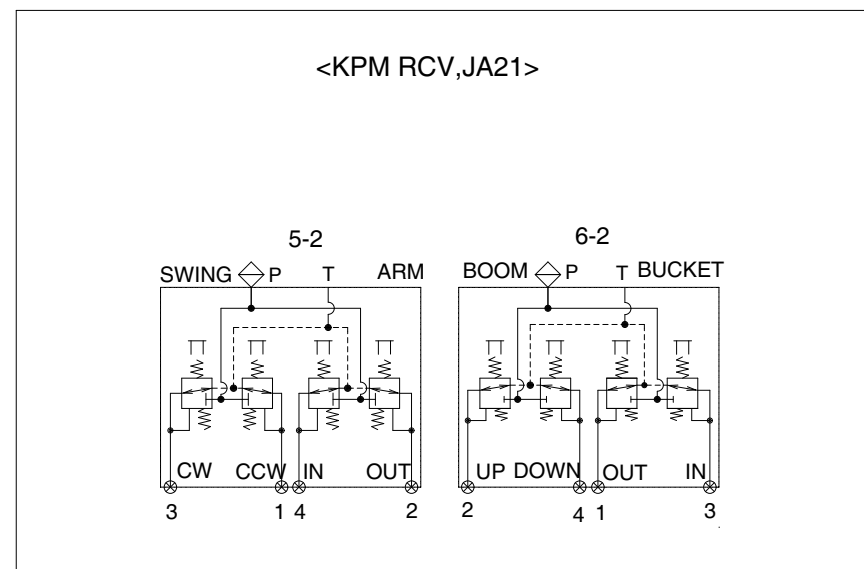
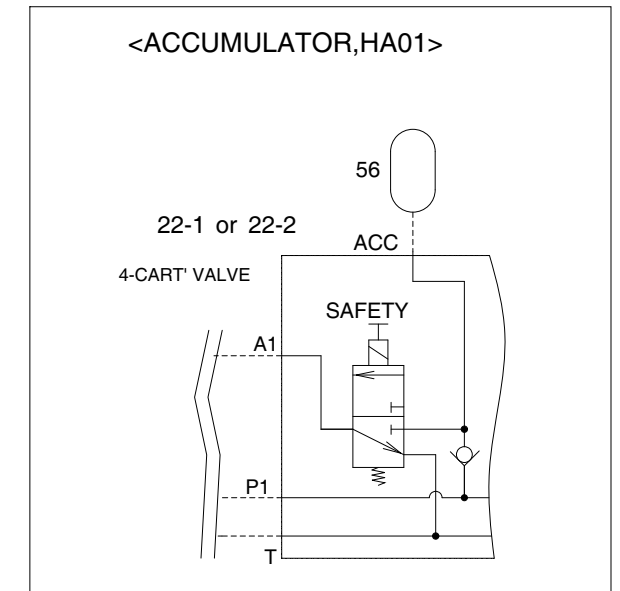
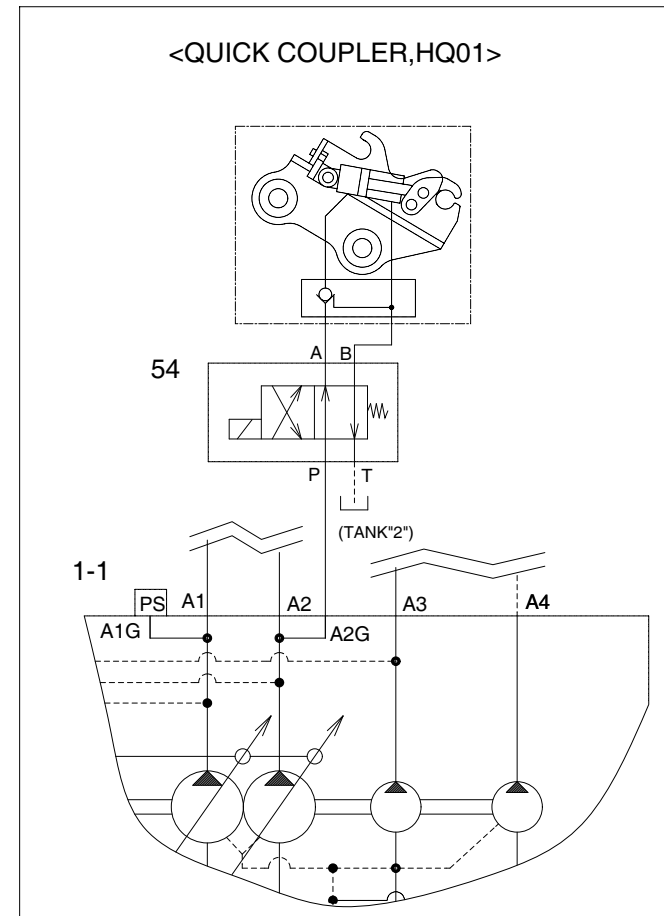
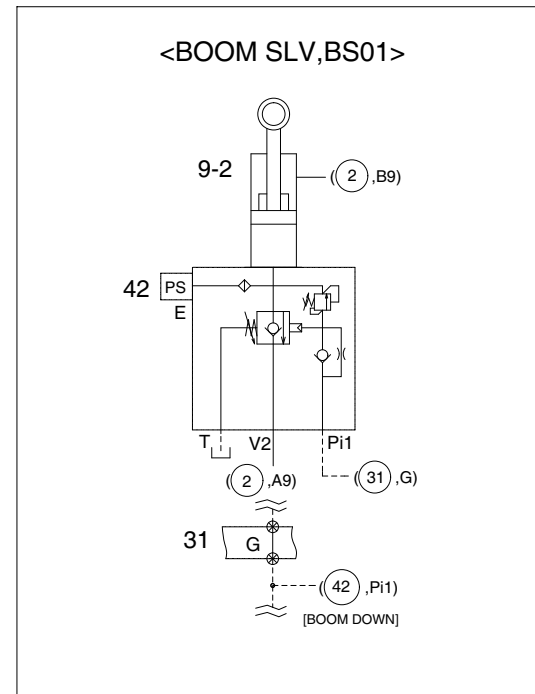
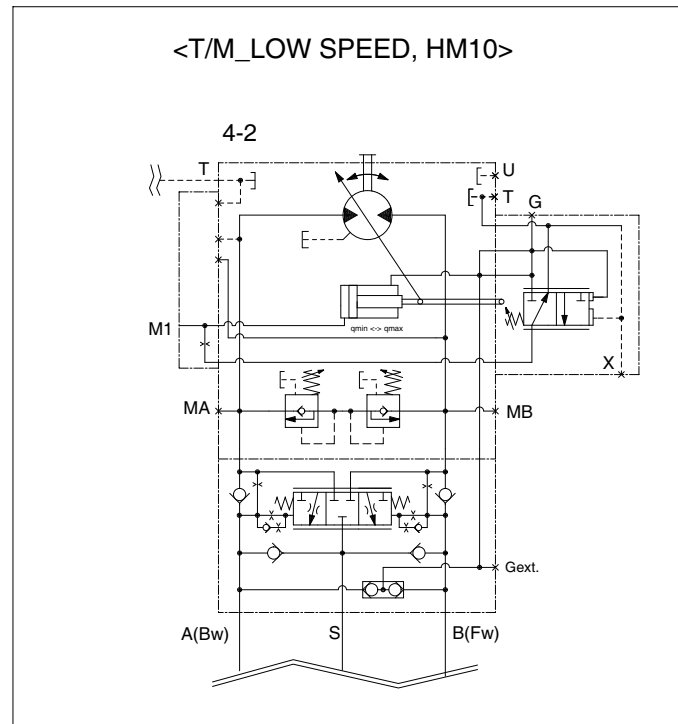
GROUP 1 HYDRAULIC CIRCUIT

1. HYDRAULIC CIRCUIT (1/3)



- 1-1 Main pump
- 2-1 Main control valve
- 3 Swing motor
- 4 Travel motor
- 5 RCV lever (LH)
- 6 RCV lever (RH)
- 7 RCV pedal (travel)
- 8 RCV lever (dozer)
- 9 Boom cylinder
- 10 Arm cylinder
- 11 Bucket cylinder
- 12 Dozer cylinder
- 13 Turning joint
- 14 Return check valve
- 15 Return check valve
- 16 Hydraulic tank
- 17 Oil cooler
- 18 Air breather
- 19 Return filter w/bypass valve
- 20 Strainer
- 21 Line filter
- 22-1 4-cartridge valve
- 23 Line check valve
- 24 Pressure sensor
- 25 Pressure sensor
- 26 Pressure sensor
- 27 Stop valve
- 28 Stop valve
- 29 Block
- 30 Block
- 31 Terminal
- 34 Last guard filter
- 35 Pressure sensor
- 36 Cut off valve
- 37 Accumulator
- 38 Accumulator
- 39 Solenoid valve
- 40 Brake valve
- 41 Pressure switch
- 42 Rear axle
- 43 Gear box
- 44 Front axle
- 45 Solenoid valve
- 46 Oscillating cylinder
- 47 Locking valve
- 48 Steering valve
- 49 1-EPPR valve
- 52 Solenoid valve
- 53-1 4-EPPR valve
- 55 Boom swing cylinder

2. HYDRAULIC CIRCUIT (2/3)



- 1-1 Main pump
- 4-2 Travel motor
- 5-2 RCV lever-LH
- 6-2 RCV lever-RH
- 9-2 Boom cylinder with SLV
- 10-2 Arm cylinder with SLV
- 54 Solenoid valve
- 56 Accumulator

