

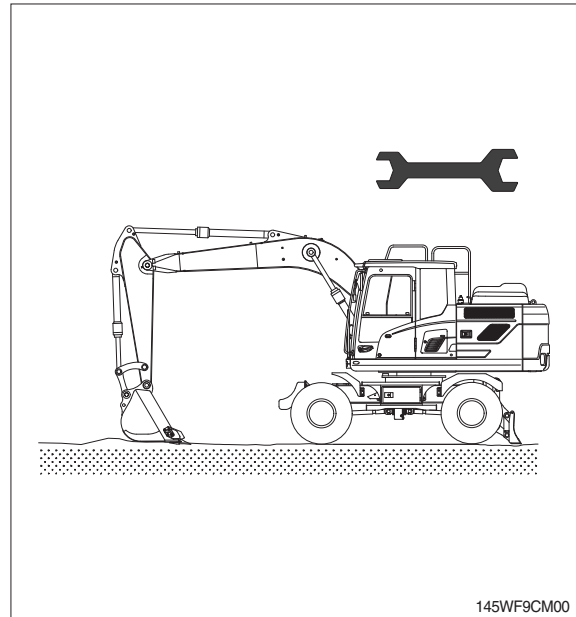
SECTION 9 COMPONENT MOUNTING TORQUE

Group 1	Introduction guide	9-1
Group 2	Engine system	9-2
Group 3	Electric system	9-4
Group 4	Hydraulic system	9-6
Group 5	Power train system	9-9
Group 6	Structure	9-11
Group 7	Work equipment	9-15

SECTION 9 COMPONENT MOUNTING TORQUE

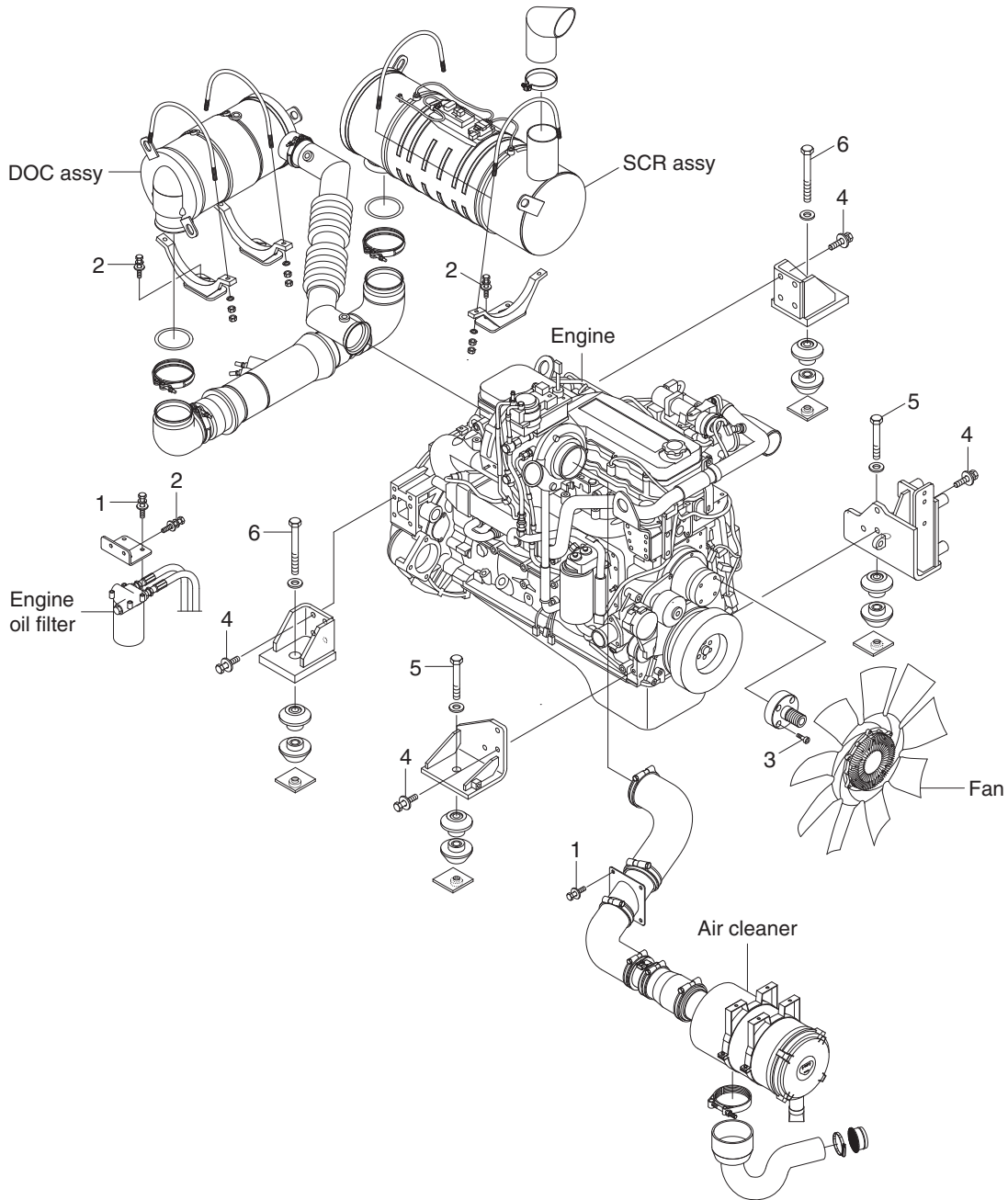
GROUP 1 INTRODUCTION GUIDE

1. This section shows bolt specifications and standard torque values needed when mounting components to the machine.
 2. Use genuine Hyundai spare parts.
We expressly point out that Hyundai will not accept any responsibility for defects resulted from non-genuine parts.
In such cases Hyundai cannot assume liability for any damage.
- ※ Only metric fasteners can be used and incorrect fasteners may result in machine damage or malfunction.
 - ※ Before installation, clean all the components with a non-corrosive cleaner. Bolts and threads must not be worn or damaged.



GROUP 2 ENGINE SYSTEM

1. ENGINE AND ACCESSORIES MOUNTING



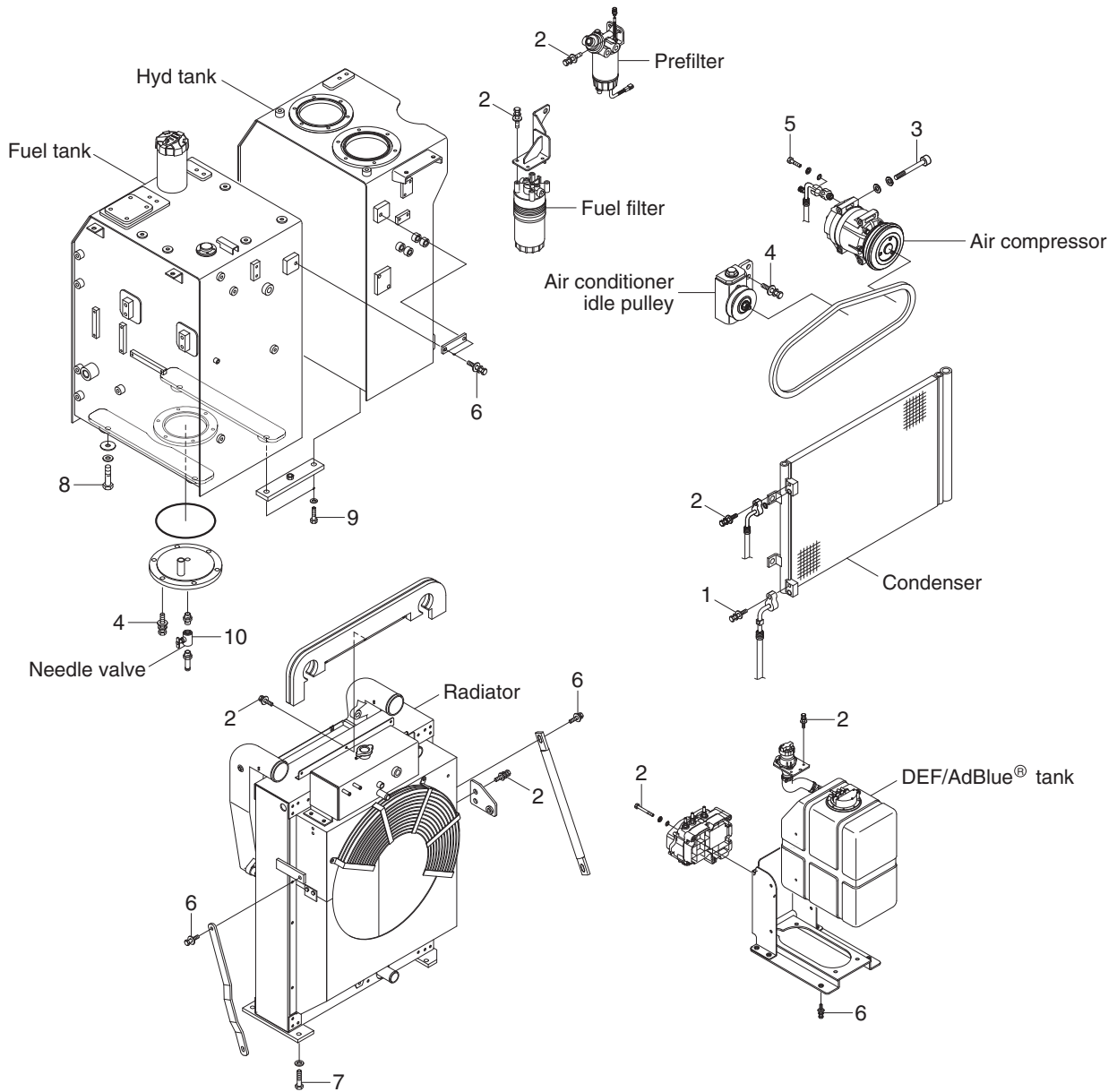
140WF9CM01

· Tightening torque

Item	Size	kgf · m	lbf · ft
1	M 8 × 1.25	2.5 ± 0.5	18.1 ± 3.6
2	M10 × 1.5	6.9 ± 1.4	49.9 ± 10.1
3	M10 × 1.5	8.27 ± 1.7	59.8 ± 12.3

Item	Size	kgf · m	lbf · ft
4	M12 × 1.75	11.5 ± 1.0	83.2 ± 7.2
5	M20 × 2.5	52.1 ± 5.0	370 ± 36.2
6	M24 × 3.0	90 ± 9.0	651 ± 65.1

2. COOLING SYSTEM AND FUEL TANK MOUNTING



140WF9CM02

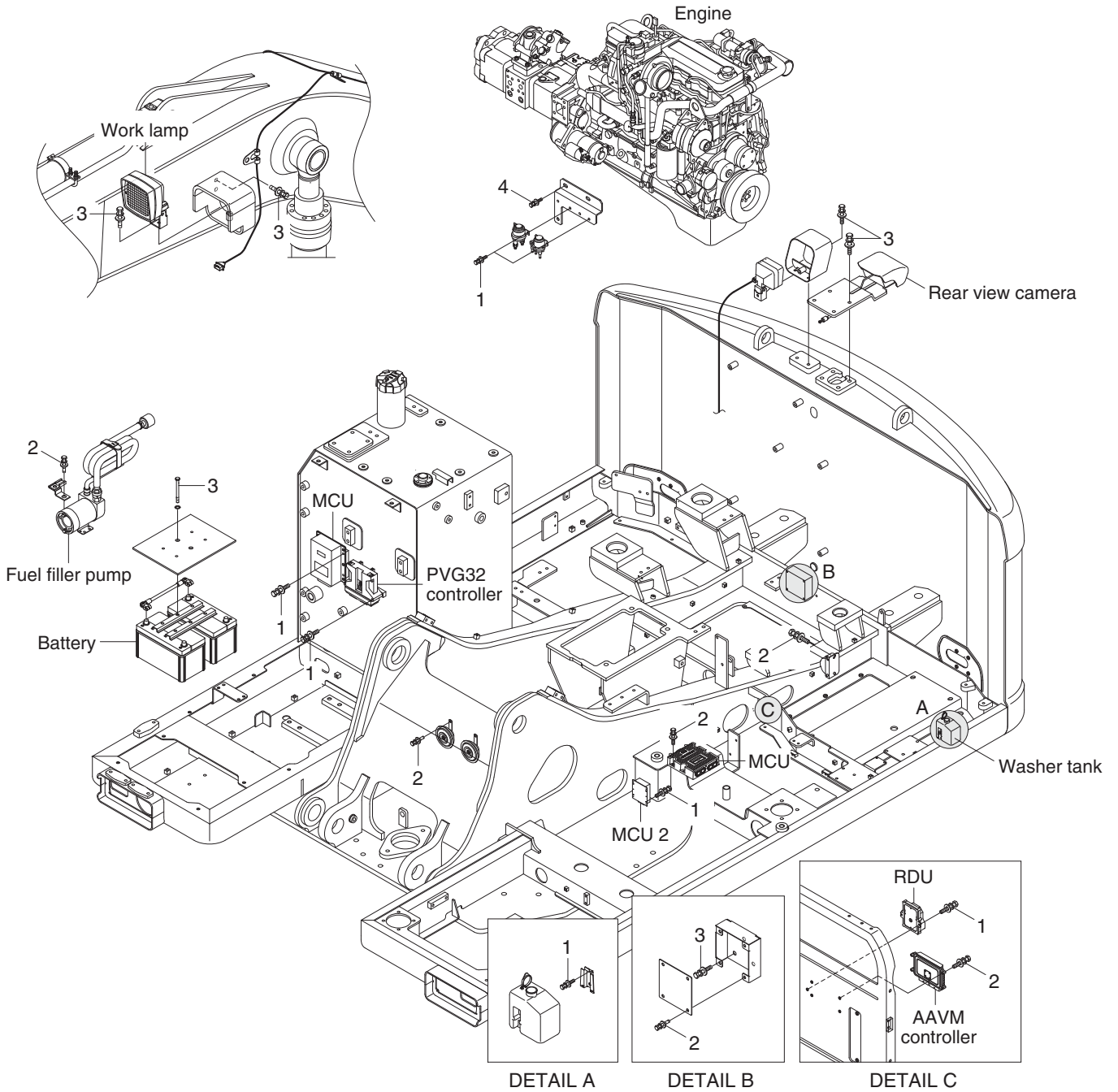
· Tightening torque

Item	Size	kgf · m	lbf · ft
1	M 6×1.0	1.05±0.2	7.6±1.45
2	M 8×1.25	2.5±0.5	18.1±3.6
3	M 8×1.25	4.05±0.8	29.3±5.8
4	M10×1.5	6.9±1.4	49.9±10.1
5	M10×1.25	7.4±1.5	53.5±10.8

Item	Size	kgf · m	lbf · ft
6	M12×1.75	12.8±3.0	92.6±21.7
7	M16×2.0	29.7±4.5	215±32.5
8	M20×2.5	57.9±5.8	419±42.0
9	M20×2.5	57.9±8.7	419±62.9
10	-	2.3±0.6	16.6±4.3

GROUP 3 ELECTRIC SYSTEM

1. ELECTRIC COMPONENTS MOUNTING 1



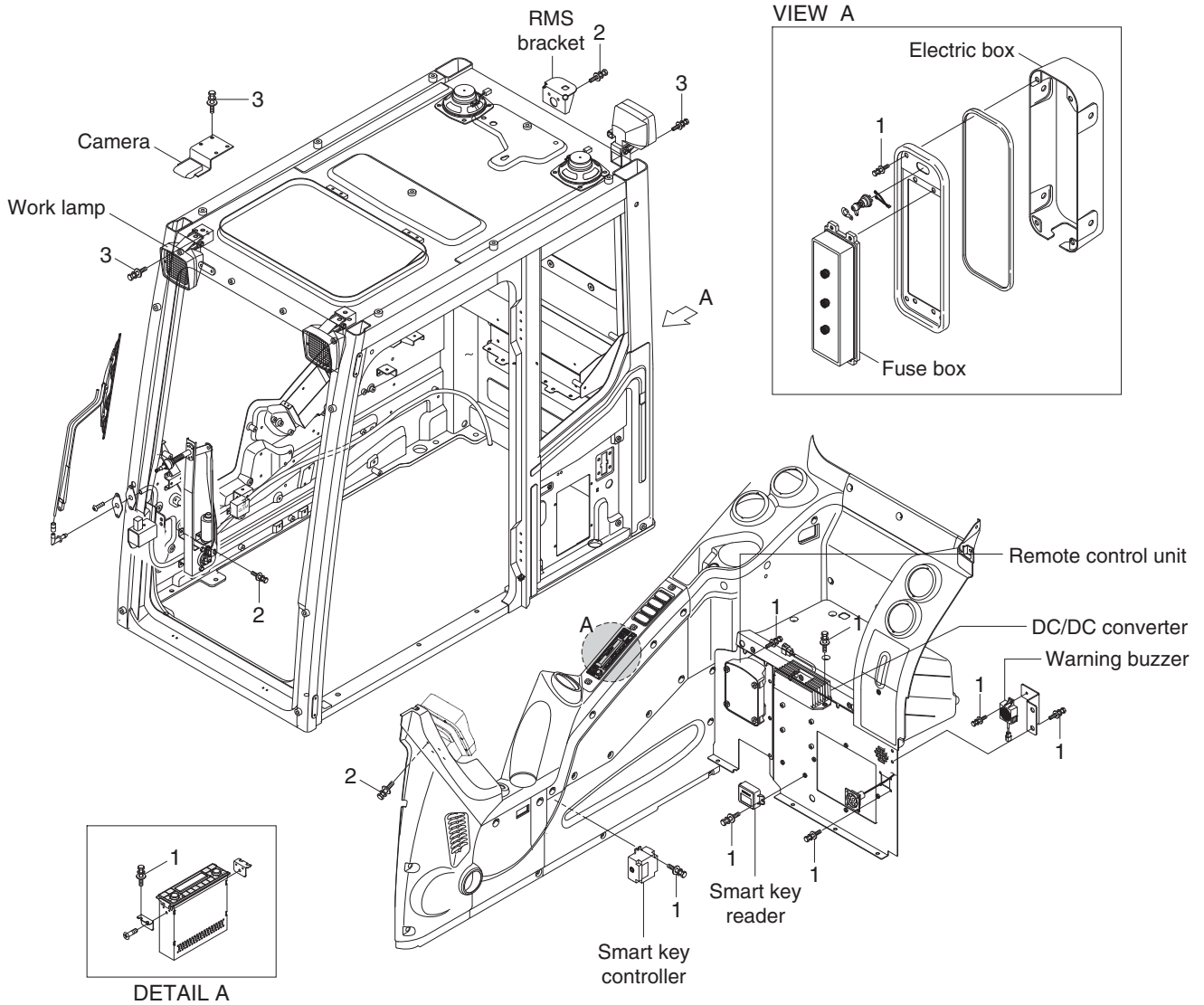
140WF9CM03

· Tightening torque

Item	Size	kgf · m	lbf · ft
1	M 6×1.0	1.05±0.2	7.6±1.45
2	M 8×1.25	2.5±0.5	18.1±3.6

Item	Size	kgf · m	lbf · ft
3	M10×1.5	6.9±1.4	49.9±10.1
4	M12×1.75	12.8±3.0	92.6±21.7

2. ELECTRIC COMPONENTS MOUNTING 2



140WF9CM04

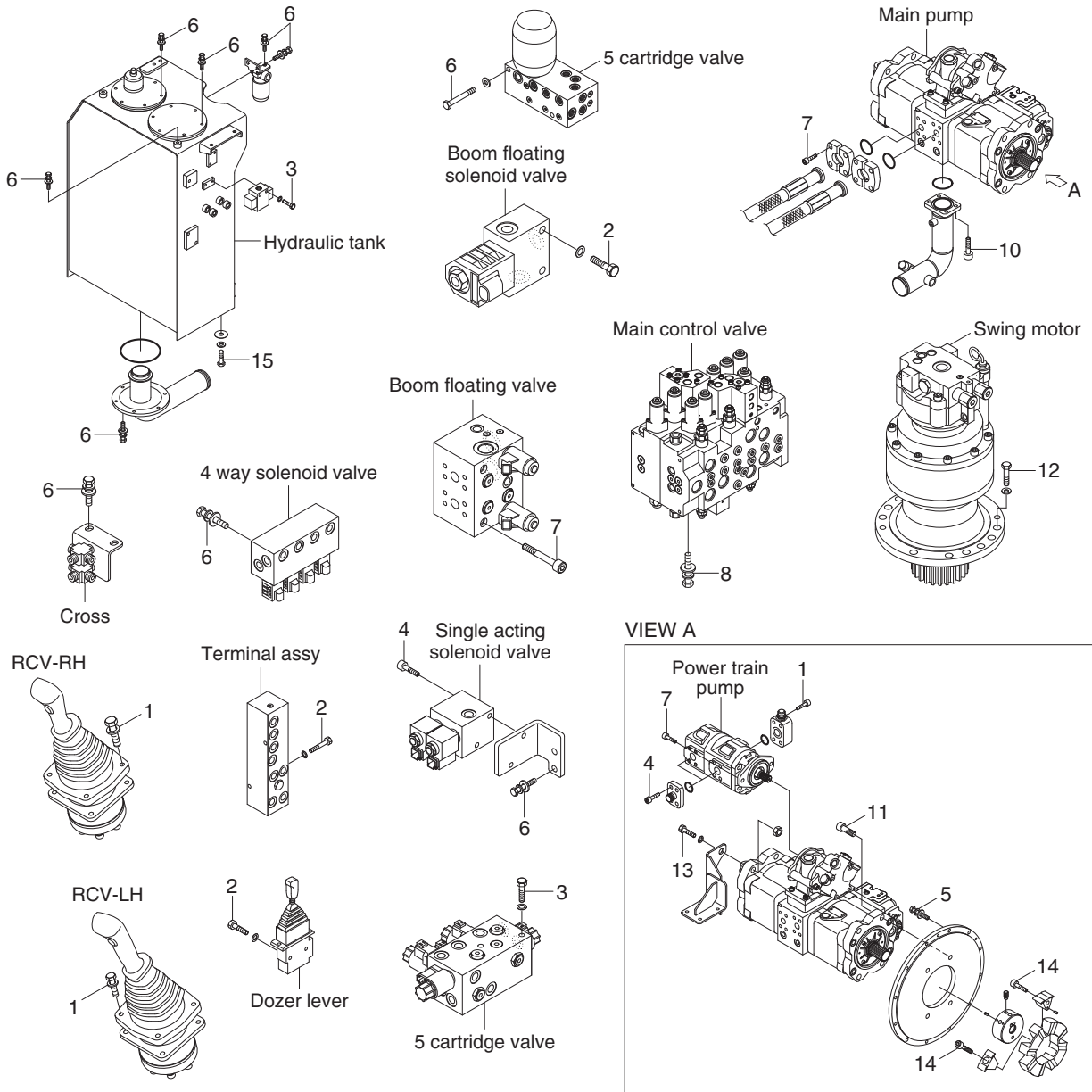
· Tightening torque

Item	Size	kgf · m	lbf · ft
1	M 6×1.0	1.05±0.2	7.6±1.45
2	M 8×1.25	2.5±0.5	18.1±3.6

Item	Size	kgf · m	lbf · ft
3	M10×1.5	6.9±1.4	49.9±10.1

GROUP 4 HYDRAULIC SYSTEM

1. HYDRAULIC COMPONENTS MOUNTING 1



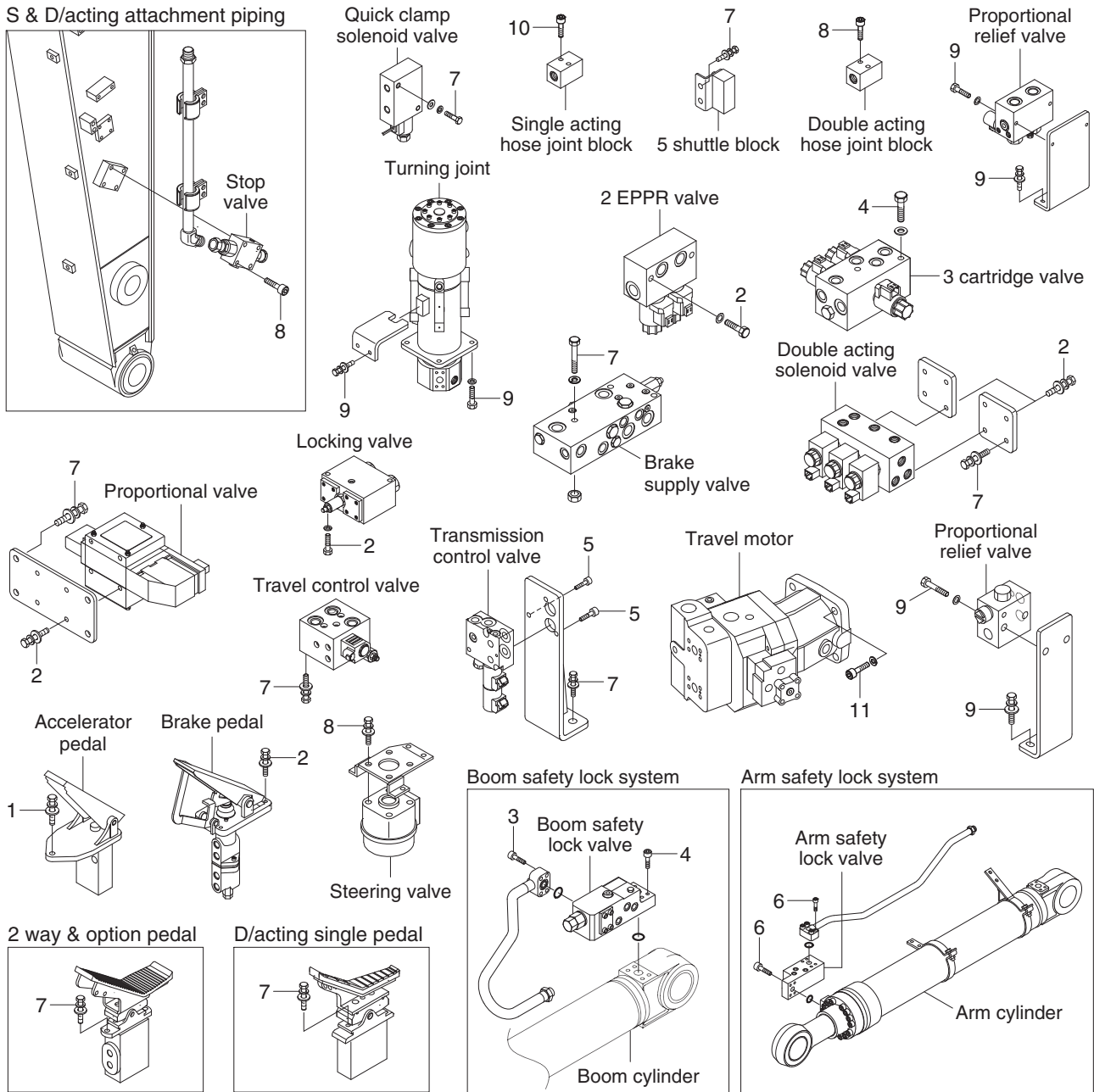
140WF9CM05

· Tightening torque

Item	Size	kgf · m	lbf · ft
1	M 6×1.0	1.05±0.2	7.6±1.45
2	M 8×1.25	2.5±0.5	18.1±3.6
3	M 8×1.25	3.43±0.7	24.8±5.1
4	M 8×1.25	4.05±0.8	29.3±5.8
5	M10×1.5	4.8±0.3	34.7±2.2
6	M10×1.5	6.9±1.4	49.9±10.1
7	M10×1.5	8.27±1.7	59.8±12.3
8	M12×1.75	12.2±1.3	88.2±9.4

Item	Size	kgf · m	lbf · ft
9	M12×1.75	12.8±3.0	92.6±21.7
10	M12×1.75	14.7±2.2	106±15.9
11	M16×2.0	25.0±2.5	181±18.1
12	M16×2.0	29.6±3.2	214±23.1
13	M16×2.0	29.7±4.5	215±32.5
14	M18×2.5	32±1.0	231±7.2
15	M20×2.5	57.9±5.8	419±42.0

2. HYDRAULIC COMPONENTS MOUNTING 2



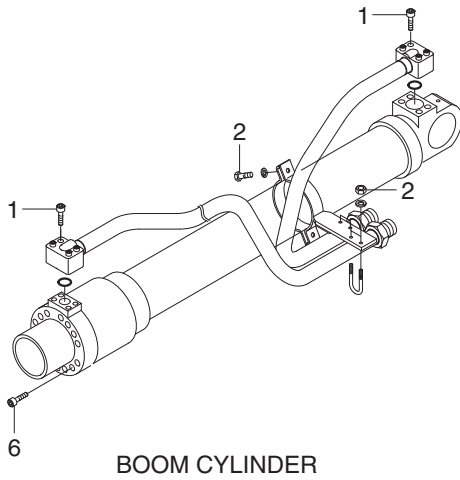
140WF9CM06

· Tightening torque

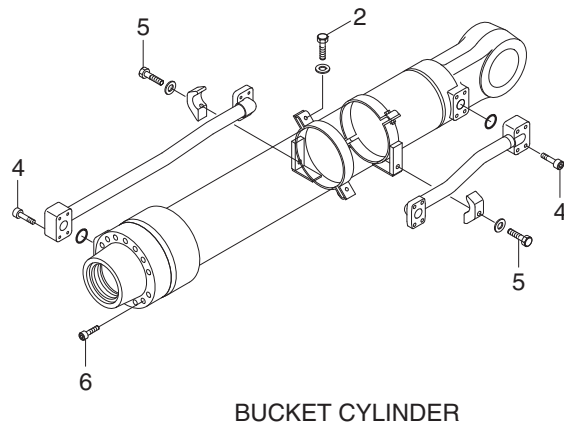
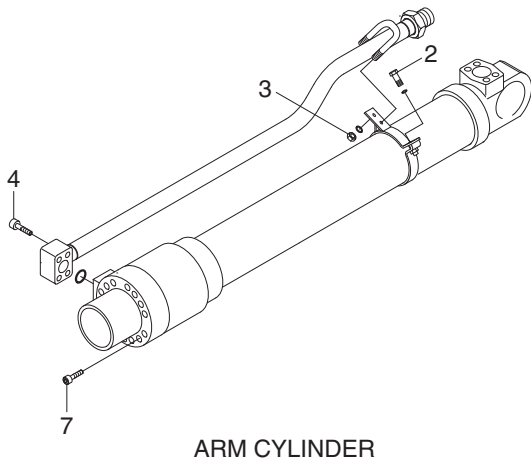
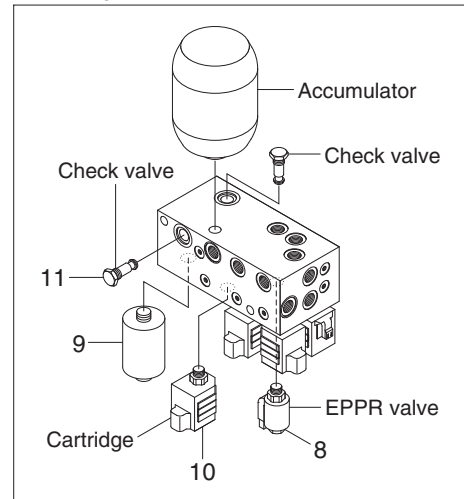
Item	Size	kgf · m	lbf · ft
1	M 6×1.0	1.05±0.2	7.6±1.45
2	M 8×1.25	2.5±0.5	18.1±3.6
3	M 8×1.25	2.7±0.3	19.5±2.2
4	M 8×1.25	3.43±0.7	24.2±5.1
5	M 8×1.25	4.05±0.8	29.3±5.8
6	M10×1.5	5.4±0.5	39.1±3.6

Item	Size	kgf · m	lbf · ft
7	M10×1.5	6.9±1.4	49.9±10.1
8	M10×1.5	8.27±1.7	59.8±12.3
9	M12×1.75	12.8±3.0	92.6±21.7
10	M12×1.75	14.7±2.2	106±15.9
11	M16×2.0	35.6±7.1	257±51.4

3. HYDRAULIC COMPONENTS MOUNTING 3



5 cartridge valve



140WF9CM07

· Tightening torque

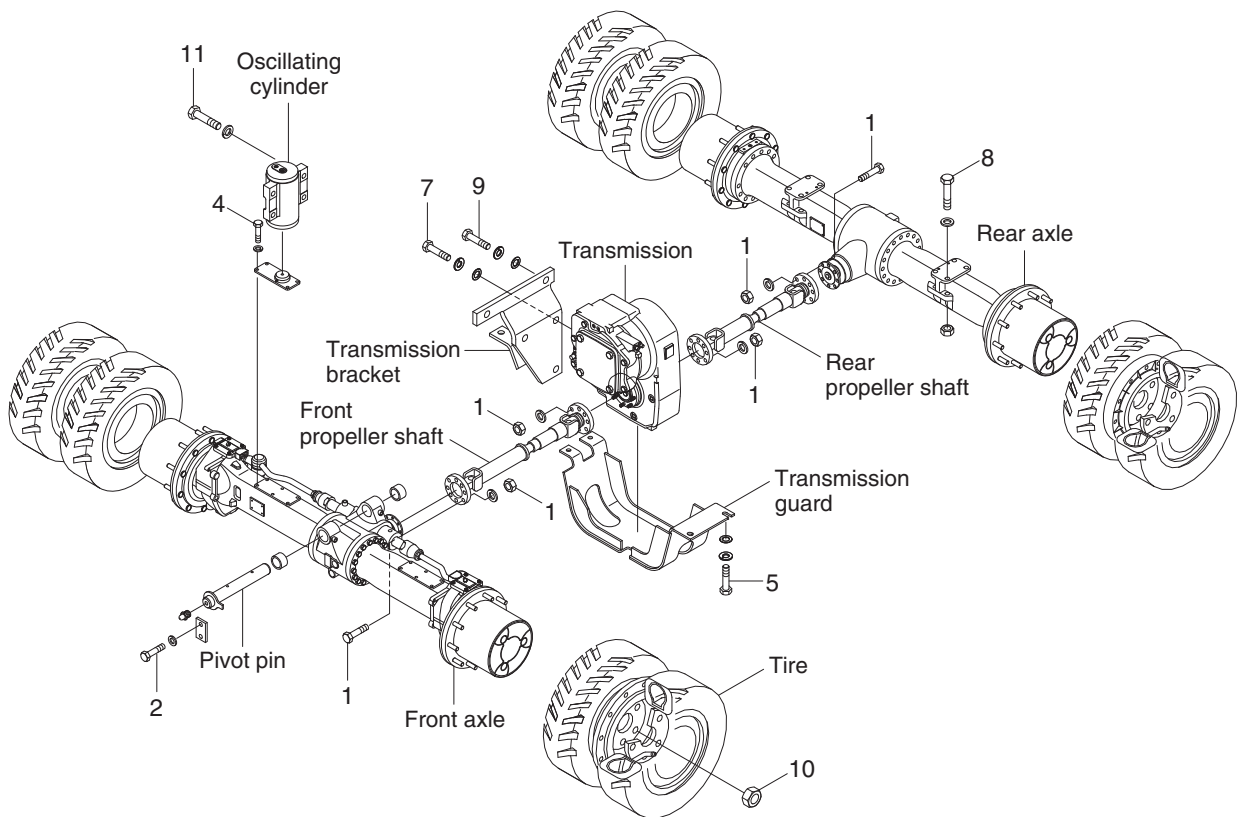
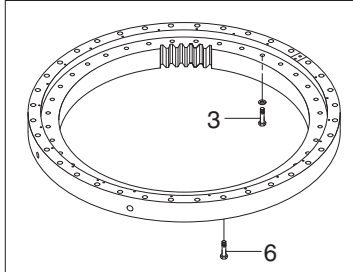
Item	Size	kgf · m	lbf · ft
1	M 8×1.25	2.7±0.3	19.5±2.2
2	M10×1.5	3.2±0.3	23.1±2.2
3	M10×1.5	5.0±1.0	36.2±7.2
4	M10×1.5	5.4±0.5	39.1±3.6
5	M12×1.75	5.5±0.6	39.8±4.3
6	M14×2	15±2	108±14.5

Item	Size	kgf · m	lbf · ft
7	M16×2	23±2	166±14.5
8	EPPR valve	2.5	18.1
9	Line filter	2.5	18.1
10	Cartridge	3.5	25.3
11	Check valve	4.0	28.9

GROUP 5 POWER TRAIN SYSTEM

1. POWER TRAIN MOUNTING

Swing bearing



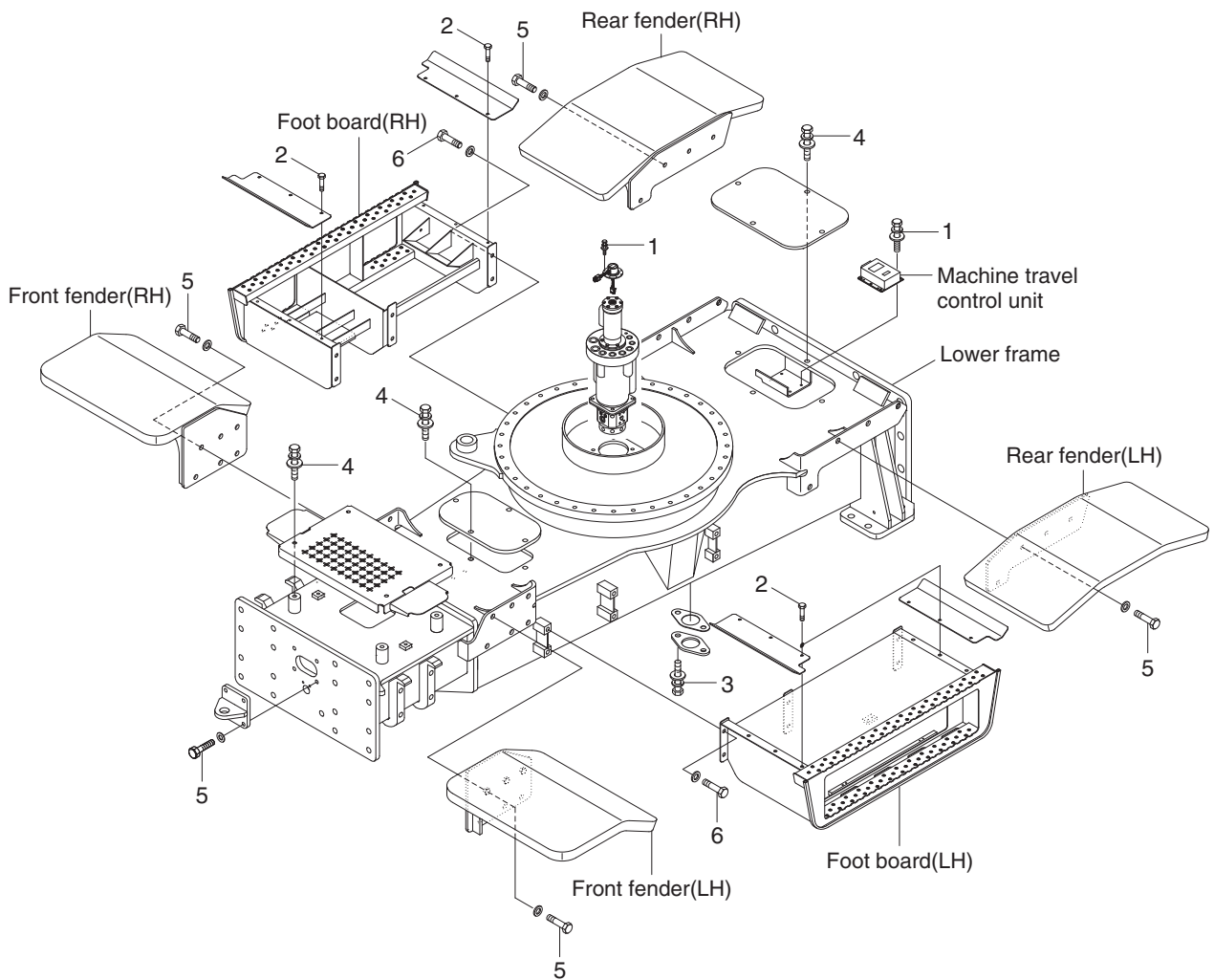
140WF9CM08

· Tightening torque

Item	Size	kgf · m	lbf · ft
1	M10×1.0	5.9±0.6	42.7±4.3
2	M12×1.75	12.8±3.0	92.6±21.7
3	M16×1.5	29.7±3.0	215±21.7
4	M16×2.0	29.6±3.2	214±23.1
5	M16×2.0	29.7±4.5	215±32.5
6	M18×2.5	41.3±4.0	299±28.9

Item	Size	kgf · m	lbf · ft
7	M20×2.5	44±2.0	318±14.5
8	M20×2.5	58±6.3	420±45.6
9	M20×2.5	58.4±6.4	422±46.3
10	M22×1.5	60 ⁺⁰ ₋₅	434 ⁺⁰ _{-36.2}
11	M22×1.5	83.2±9.2	602±66.5

2. COVER AND FOOT BOARD



140WF9CM09

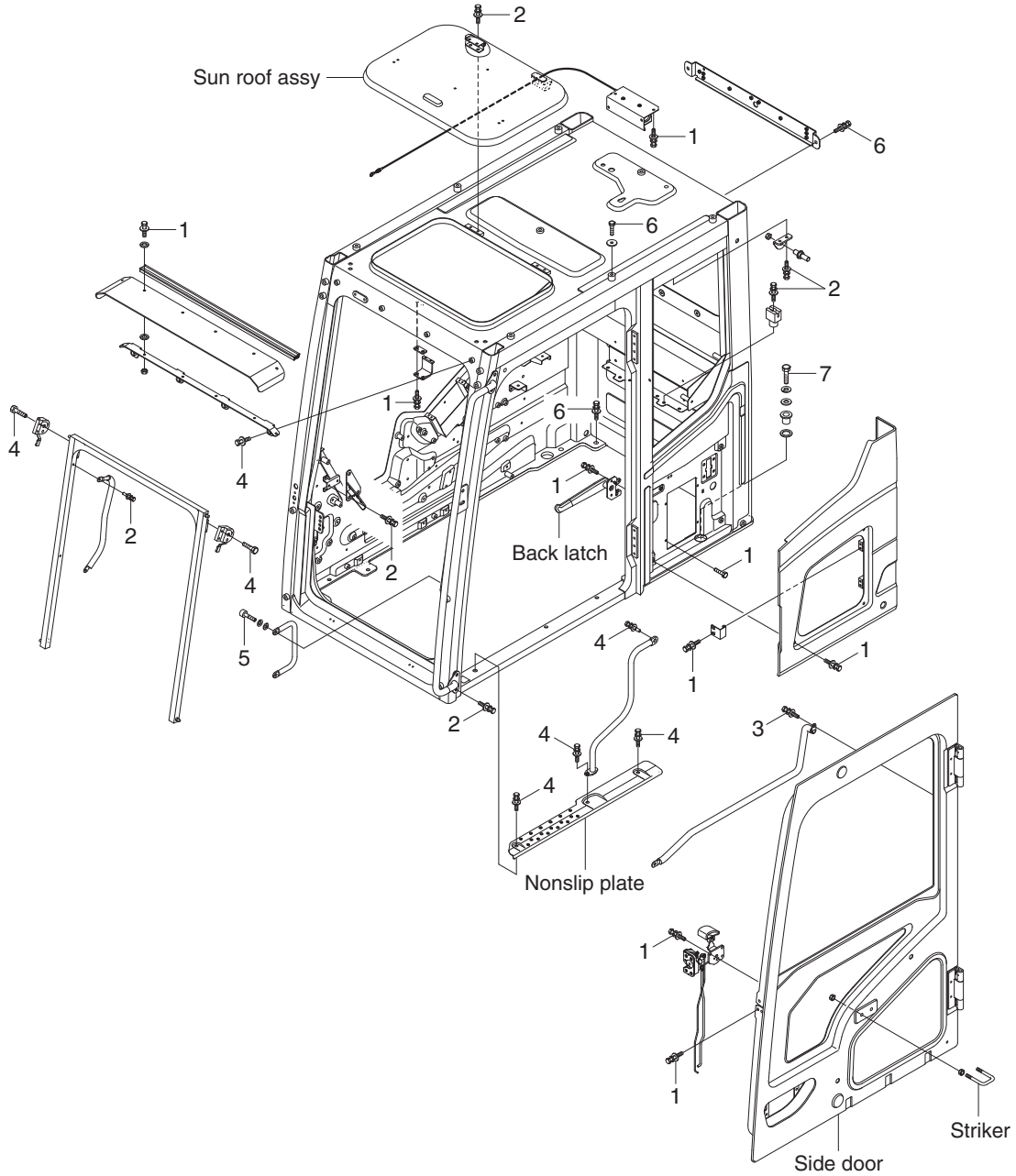
· Tightening torque

Item	Size	kgf · m	lbf · ft
1	M 6×1.0	1.05±0.2	7.6±1.45
2	M 8×1.25	2.5±0.5	18.1±3.6
3	M10×1.5	6.9±1.4	49.9±10.1

Item	Size	kgf · m	lbf · ft
4	M12×1.75	12.8±3.0	92.6±21.7
5	M16×2.0	29.7±4.5	215±32.5
6	M20×2.5	57.9±8.7	419±62.9

GROUP 6 STRUCTURE

1. CAB AND ACCESSORIES MOUNTING



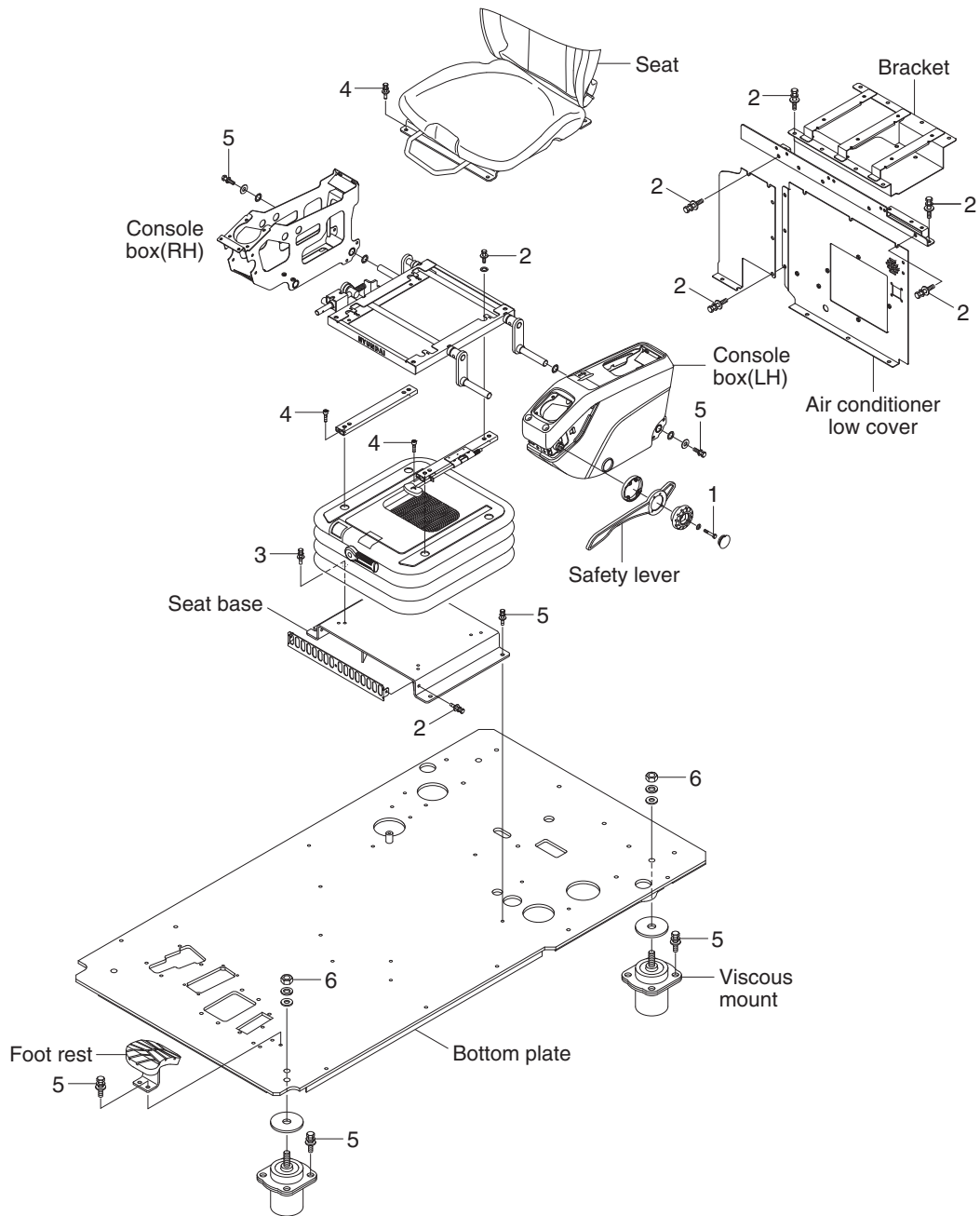
140WF9CM10

· Tightening torque

Item	Size	kgf · m	lbf · ft
1	M 6×1.0	1.05±0.2	7.6±1.45
2	M 8×1.25	2.5±0.5	18.1±3.6
3	M 8×1.25	3.43±0.7	24.8±5.1
4	M10×1.5	6.9±1.4	49.9±10.1

Item	Size	kgf · m	lbf · ft
5	M10×1.5	8.27±1.7	59.8±12.3
6	M12×1.75	12.8±3.0	92.6±21.7
7	M24×3.0	100±15	723±109

2. CAB INTERIOR MOUNTING



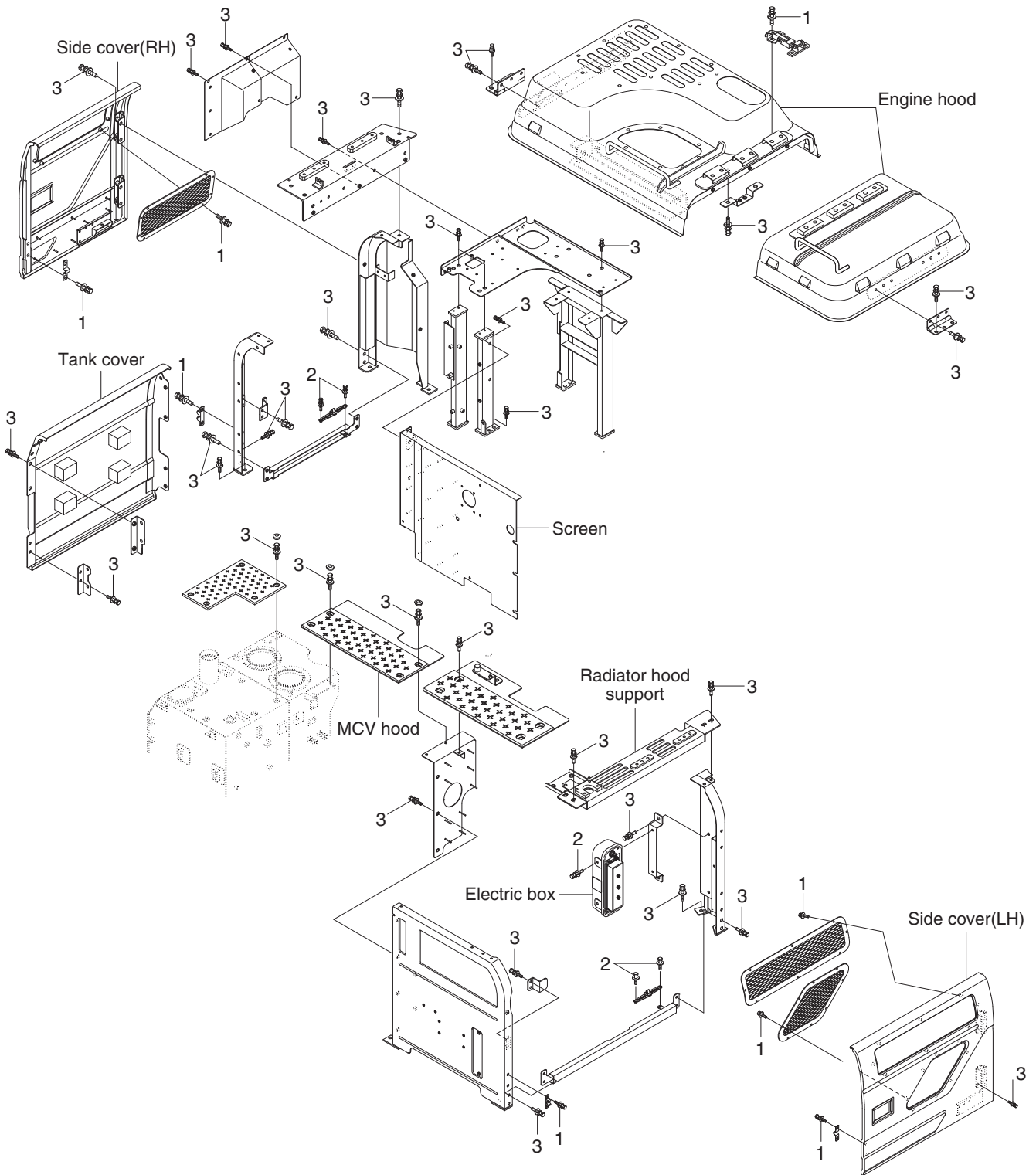
140WF9CM11

· Tightening torque

Item	Size	kgf · m	lbf · ft
1	M 6×1.0	1.05±0.2	7.6±1.45
2	M 8×1.25	2.5±0.5	18.1±3.6
3	M 8×1.25	3.43±0.7	24.8±5.1

Item	Size	kgf · m	lbf · ft
4	M 8×1.25	4.05±0.8	29.3±5.8
5	M10×1.5	6.9±1.4	49.9±10.1
6	M16×2.0	21.9±3.3	158±23.9

3. COWLING MOUNTING



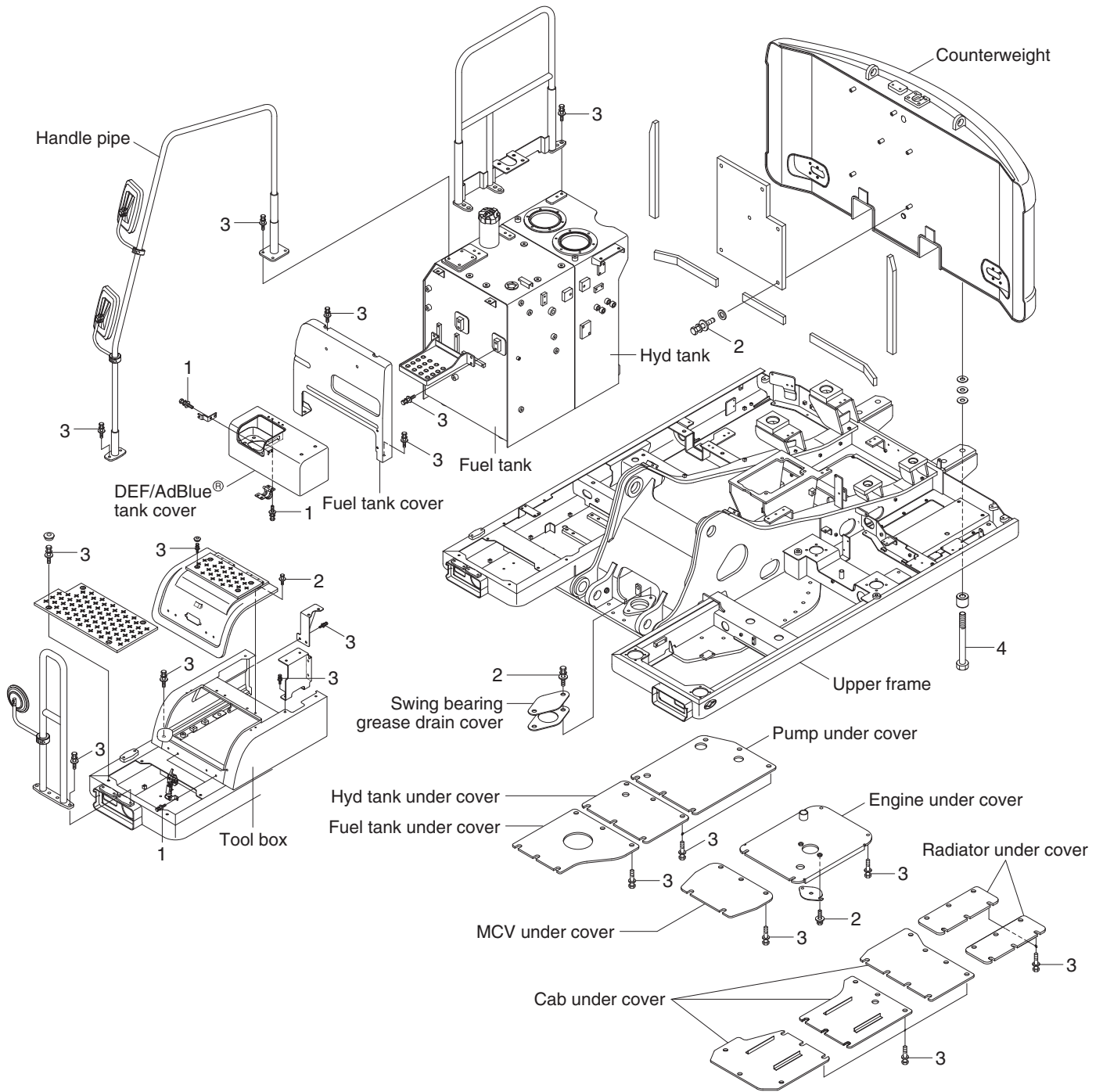
140WF9CM12

· Tightening torque

Item	Size	kgf · m	lbf · ft
1	M 8×1.25	2.5±0.5	18.1±3.6
2	M10×1.5	6.9±1.4	49.9±10.1

Item	Size	kgf · m	lbf · ft
3	M12×1.75	12.8±3.0	92.6±21.7

4. COUNTERWEIGHT AND COVERS MOUNTING



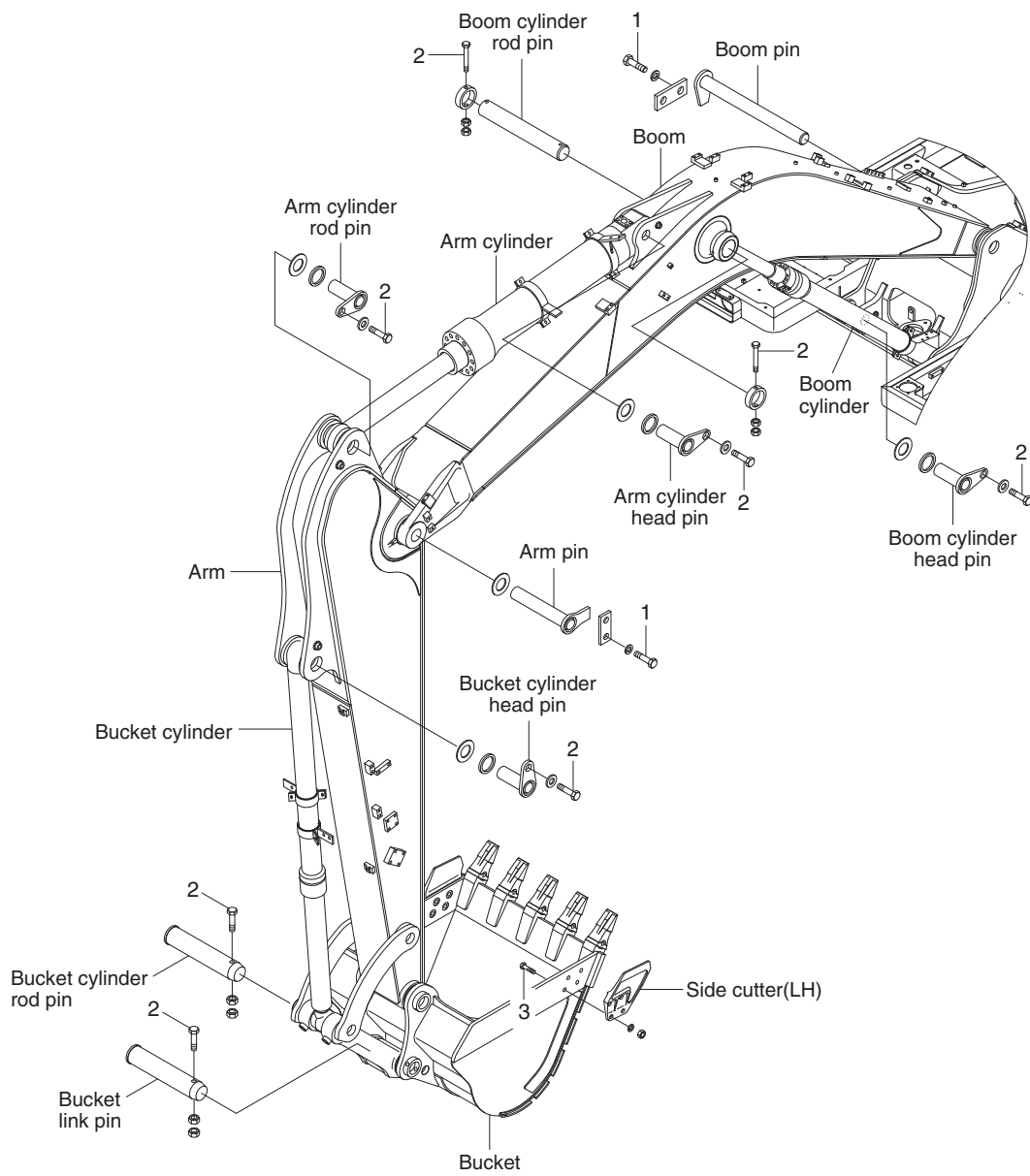
140WF9CM13

· Tightening torque

Item	Size	kgf · m	lbf · ft
1	M 8 × 1.25	2.5 ± 0.5	18.1 ± 3.6
2	M10 × 1.5	6.9 ± 1.4	49.9 ± 10.1

Item	Size	kgf · m	lbf · ft
3	M12 × 1.75	12.8 ± 3.0	92.6 ± 21.7
4	M27 × 3.0	135 ± 15	976 ± 108

GROUP 7 WORK EQUIPMENT



140WF9CM14

· Tightening torque

Item	Size	kgf · m	lbf · ft
1	M12×1.75	12.8±3.0	92.6±21.7
2	M16×2.0	29.7±4.5	215±32.5
3	M20×2.5	57.9±8.7	419±62.9