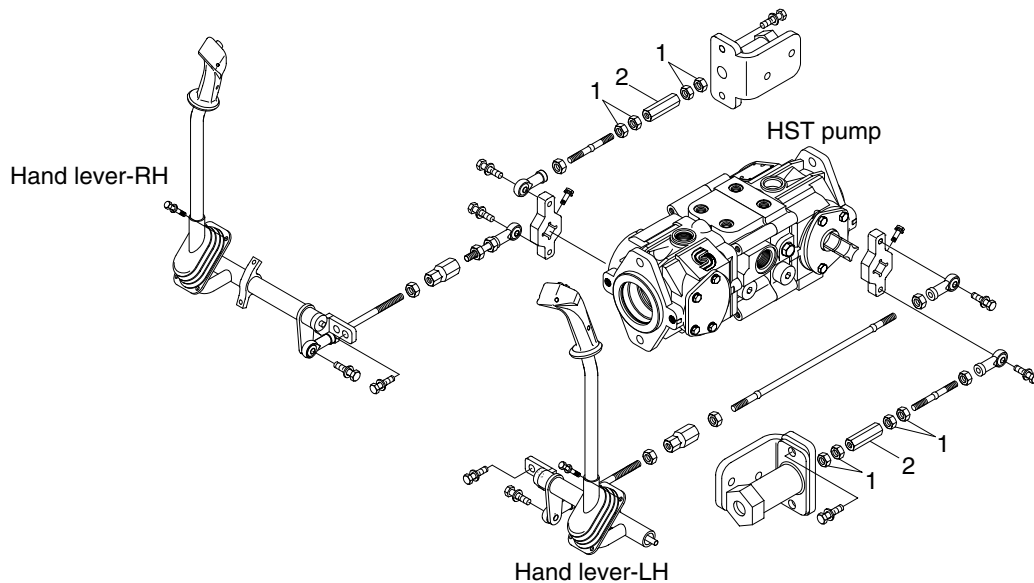


SECTION 5 CONTROL

Group 1 Mechanical control	5-1
Group 2 Pilot control	5-4
Group 3 Attachment holder	5-6

SECTION 5 CONTROL

GROUP 1 MECHANICAL CONTROL

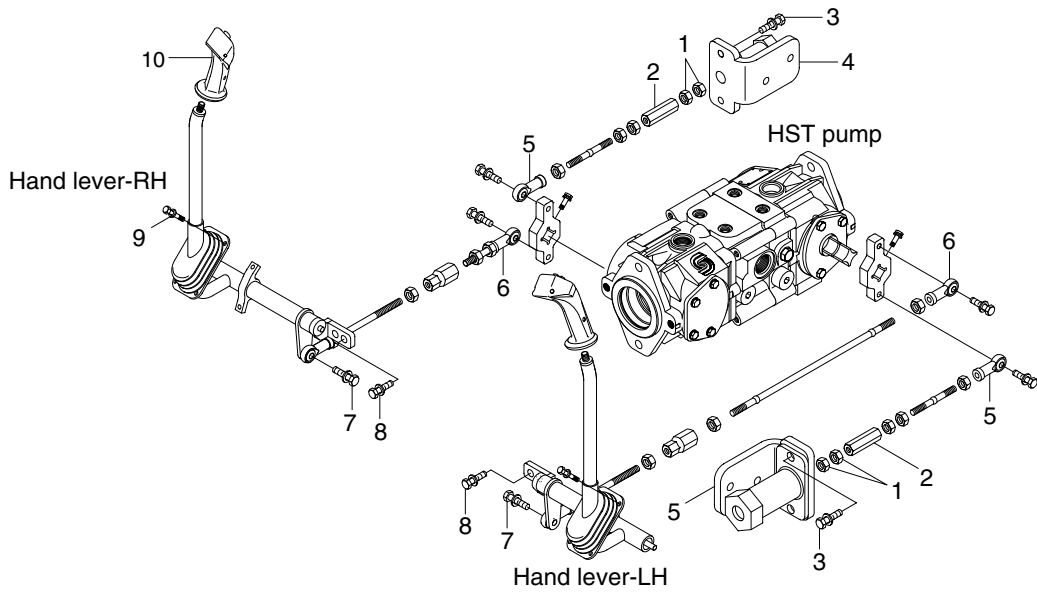


6507ACN03

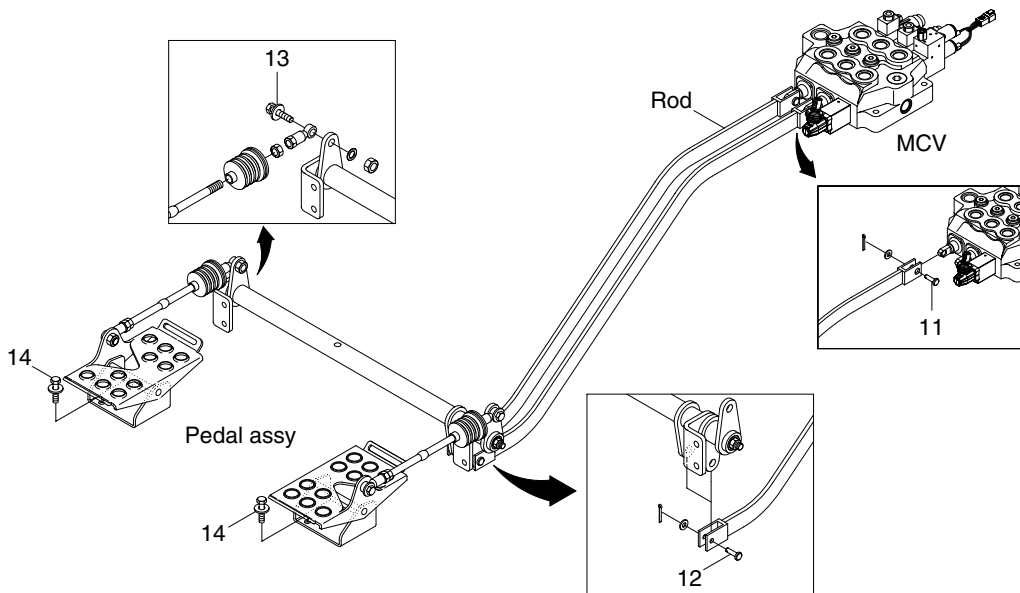
1. ADJUSTMENT OF NEUTRAL

- 1) Stop the loader on a level surface and push throttle lever to low.
- 2) Raise the canopy to service position.
Refer to operator's manual at page 4-14.
- 3) Lift the loader securely with four wheels clear of the ground.
- 4) Pull throttle lever to high and keep traveling position of seat bar.
- 5) Loosen lock nuts(1) to allow adjust link(2) to move.
- 6) Adjust neutral position by turn adjust link(2) slowly to left and right.
※ **Neutral position means the state in which the equipment should not move and generate noise to minimum without moving reduction gear and hand lever.**
- 7) Tighten lock nuts(1) after apply loctite(#243).

2. REMOVAL



6507ACN01



6507ACN01C

※ Be sure engine turn off and boom and bucket lowered on ground before removal and installation work of hand control device.

- 1) Low boom and bucket on ground and block the loader securely with four wheels clear of the ground.
- 2) Raise the canopy to service position.
Refer to operator's manual at page 4-14.
- 3) Remove the knob (10, LH and RH) and bolt(9).
- 4) Loosen lock nuts(1) to allow adjust link(2) to move.
- 5) Loosen the hex bolt(3) and remove bracket assy(4).
- 6) Remove the rod end (5, 6) from the HST pump.
- 7) Loosen the hex bolt (7, 8) and remove hand lever assy (RH and LH).
- 8) Remove the pin (11) from the main control valve.

3. INSTALL

※ Carry out installation in the reverse order to removal.

- 1) Install hand control lever assembly.
- 2) Secure the rod on the main control valve and install pin.
Tighten the bolt.
- 3) Secure the rod end on the HST pump and install hex bolt.
- 4) Install rod end assy and bracket assy.
- 5) Adjust neutral position by procedure described on chapter 1. **ADJUSTMENT OF NEUTRAL.**

