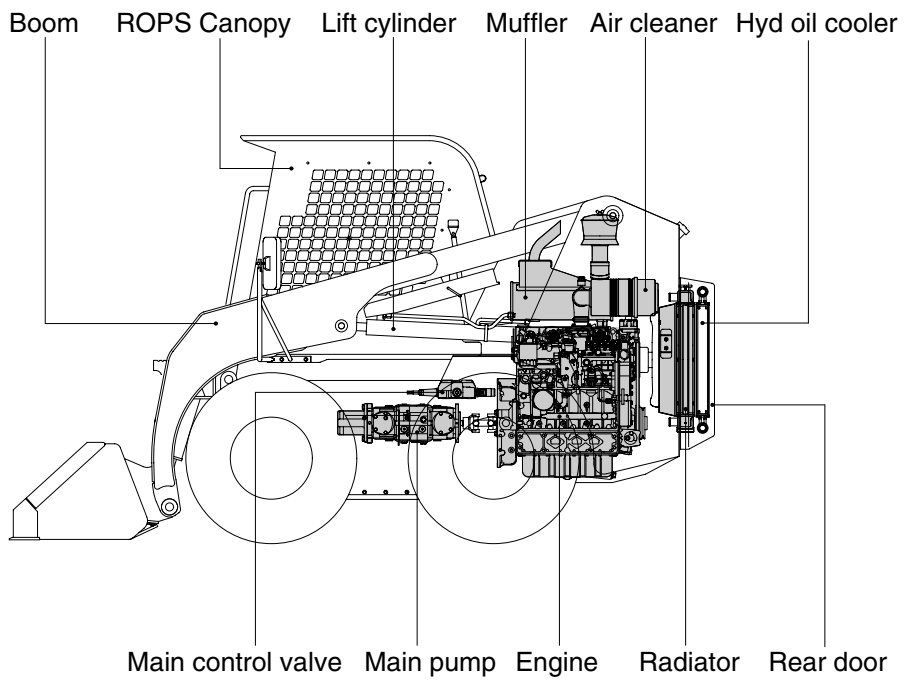
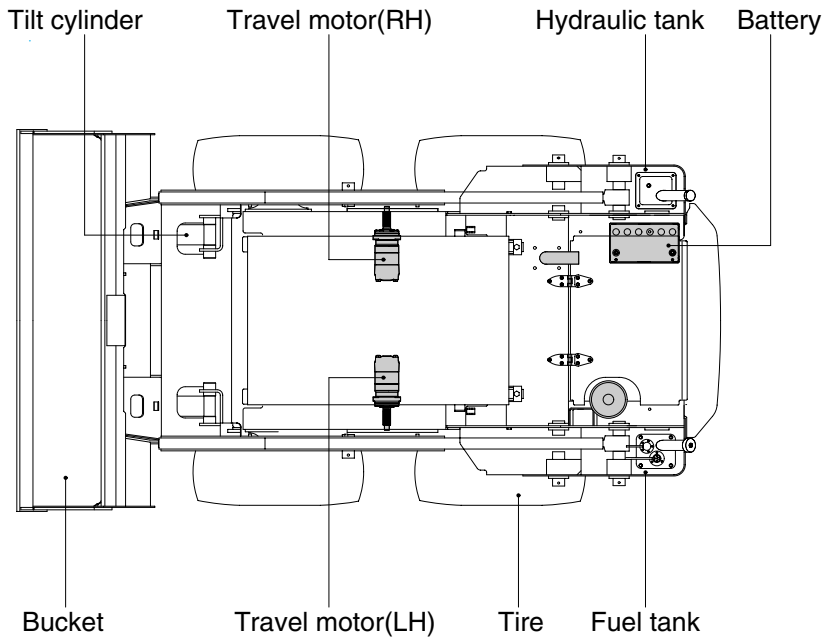


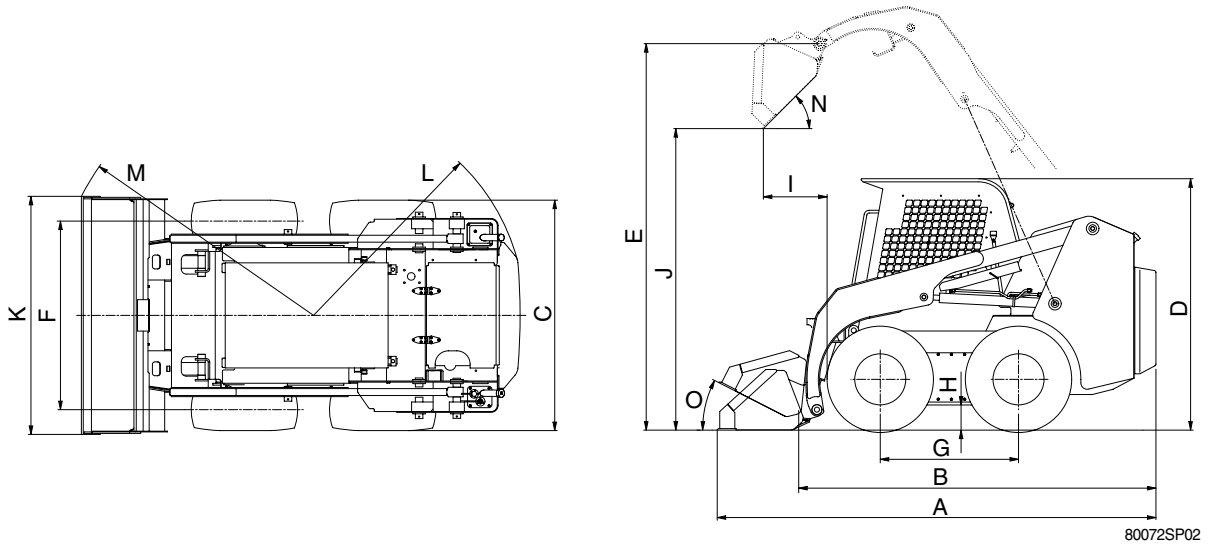
GROUP 2 SPECIFICATIONS

1. MAJOR COMPONENTS



2. SPECIFICATIONS

· WITH STANDARD BUCKET AND CANOPY



| Description | | Unit | Specification | |
|--|--------|-----------------------------------|---------------|-----|
| Operating weight | | kg(lb) | 3290(7250) | |
| Bucket capacity | Struck | m ³ (yd ³) | 0.29(0.38) | |
| | Heaped | | 0.37(0.48) | |
| Overall length | A | mm(ft-in) | 3470(11' 5") | |
| Overall length(Less bucket) | B | | 2840(9' 4") | |
| Overall width(Except bucket) | C | | 1830(6' 0") | |
| Overall height | D | | 2000(6' 7") | |
| Overall height(To hinge pin) | E | | 3080(10' 1") | |
| Tread | F | | 1500(4' 11") | |
| Wheelbase | G | | 1100(3' 7") | |
| Ground clearance | H | | 205(8.1 ") | |
| Dump reach | I | | 510(1' 10") | |
| Dump height | J | | 2410(7' 11") | |
| Width bucket | K | | 1894(6' 3") | |
| Clearance circle(Rear) | L | | 1660(5' 5") | |
| Clearance circle(Front / bucket) | M | | 2055(6' 9") | |
| Dump angle | N | | Degree(°) | 45 |
| Roll back angle(Carry position) | O | 27 | | |
| Cycle time | Boom | Up | sec | 4.1 |
| | | Down | | 2.5 |
| | Tilt | Dump | | 2.8 |
| | | Roll back | | 2.0 |
| Maximum travel speed | | km/hr(mph) | 11.6(7.2) | |
| Minimum turning radius(Without bucket) | | mm(ft-in) | 1350(4' 5") | |
| Gradeability | | Degree(°) | 20 | |

3. WEIGHT

| Item | HSL850-7 | |
|-------------------------------|----------|------|
| | kg | lb |
| Frame assembly | 1050 | 2310 |
| Canopy | 128 | 282 |
| Engine assembly | 246 | 542 |
| Main pump assembly | 65 | 143 |
| Main control valve | 29 | 64 |
| Travel motor | 48 | 106 |
| Boom | 380 | 838 |
| Bucket | 190 | 419 |
| Tire(12 × 16.5-12PR) with rim | 59 | 130 |
| Boom cylinder | 24 | 53 |
| Bucket cylinder | 18 | 40 |
| Seat | 10 | 22 |
| Battery | 20 | 44 |

4. SPECIFICATION FOR MAJOR COMPONENTS

1) ENGINE

| Item | Specification |
|-------------------------------------|-----------------------|
| Model | Kubota V3300DI |
| Type | 4-cycle diesel engine |
| Cooling method | Water cooling |
| Number of cylinders and arrangement | 4 cylinders, in-line |
| Combustion chamber type | Direct injection type |
| Cylinder bore × stroke | 98 × 110mm |
| Piston displacement | 3318cc |
| Compression ratio | 20 : 1 |
| Rated gross horse power | 68ps at 2400rpm |
| Maximum gross torque | 24kgf · m at 1400rpm |
| Engine oil quantity | 13.2 l |
| Dry weight | 246kg |
| High idling speed | 2600 ± 50rpm |
| Low idling speed | 1050 ± 25rpm |
| Rated fuel consumption | 178g/Ps · hr |
| Starting motor | 12-2.5kW |
| Alternator | 12V-60AMP |
| Battery | 1 × 12V × 90Ah |

2) MAIN PUMP ASSY

| Item | Specification | |
|----------------------------|----------------------------------|----------------------------------|
| | Main pump | Auxiliary pump |
| Type | Axial tandem piston pump | Fixed gear pump |
| Capacity | 2 × 46cc/rev | 28cc/rev |
| Maximum operation pressure | 250kgf/cm ² (3560psi) | 220kgf/cm ² (3130psi) |
| Rated speed | 2400rpm | 2400rpm |

3) MAIN CONTROL VALVE

| Item | Specification |
|----------------------------|----------------------------------|
| Type | 3 spool(Mono block) |
| Main relief valve pressure | 175kgf/cm ² (2490psi) |

4) TRAVEL MOTOR

| Item | Specification |
|----------|------------------|
| Type | Fixed gear motor |
| Capacity | 523.6cc/rev |

5) CYLINDER

| Item | Specification |
|-----------------|--|
| Boom cylinder | Bore dia × Rod dia × Stroke ø 63 × ø 40 × 746mm |
| Bucket cylinder | Bore dia × Rod dia × Stroke ø 75 × ø 40 × 351mm |

6) WHEELS

| Item | Specification |
|------|-----------------------------------|
| Tire | Tubeless type 12 × 16.5 - 12PR |
| | Tube type 8.25 × 16 - 16PR |
| | Solid type 8.25 × 15 |

5. RECOMMENDED OILS

Use only oils listed below or equivalent.

Do not mix different brand oil.

| Service point | OKind of fluid | Capacity l (U.S. gal) | Ambient temperature °C(°F) | | | | | | |
|----------------------------|--|--|-------------------------------------|-------------|-----------|------------|------------|------------|-------------|
| | | | -20 (-4) | -10 (14) | 0 (32) | 10 (50) | 20 (68) | 30 (86) | 40 (104) |
| Engine oil pan | Engine oil | 13.2(3.5) | SAE 15W-40 | | | | | | |
| | | | SAE 30 | | | | | | |
| | | | SAE 10W | | | | | | |
| | | | SAE 10W-30 | | | | | | |
| | | | | | | | | | |
| Chain case | Engine oil | Right : 9.2(2.4) Left : 9.2(2.4) | SAE 15W-40 | | | | | | |
| Hydraulic tank | Hydraulic oil | Tank; 56(14.8) System; 68(18.0) | ISO VG 32 | | | | | | |
| | | | ISO VG 46 | | | | | | |
| | | | ISO VG 68 | | | | | | |
| Fuel tank | Diesel fuel | 83(21.9) | ASTM D975 NO.1 | | | | | | |
| | | | ASTM D975 NO.2 | | | | | | |
| Fitting (Grease nipple) | Grease | As required | NLGI NO.1 | | | | | | |
| | | | NLGI NO.2 | | | | | | |
| Radiator | Mixture of antifreeze and water 50 : 50 | 10.3(2.7) | Ethylene glycol base permanent type | | | | | | |

SAE : Society of Automotive Engineers

API : American Petroleum Institute

ISO : International Organization for Standardization

NLGI : National Lubricating Grease Institute

ASTM : American Society of Testing and Material