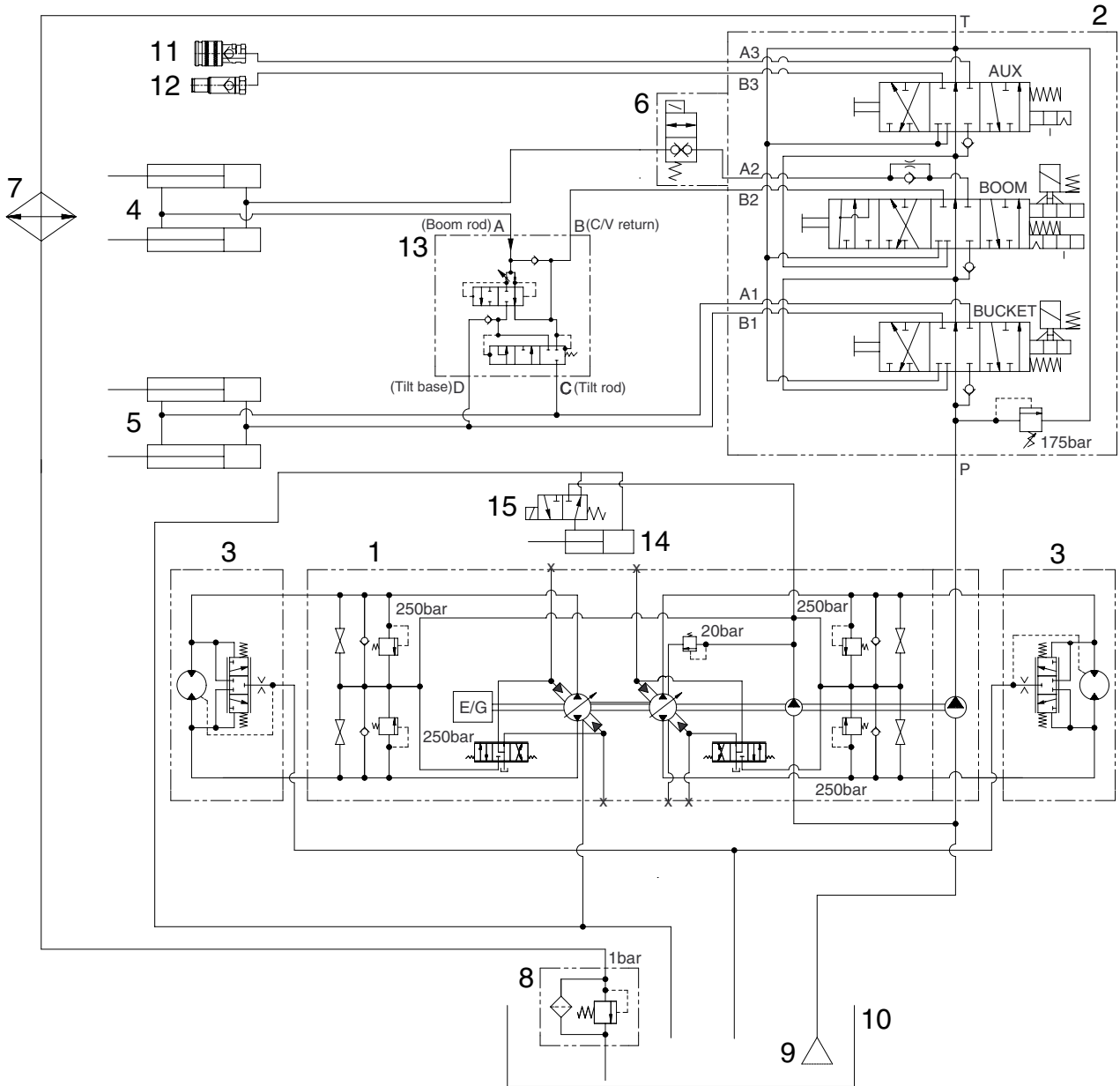


SECTION 2 HYDRAULIC SYSTEM

| | | |
|---------|-----------------------------------|------|
| Group 1 | Hydraulic circuit | 2-1 |
| Group 2 | Hydraulic component testing | 2-2 |
| Group 3 | Self level valve(Optional) | 2-8 |
| Group 4 | Auxiliary pump | 2-14 |
| Group 5 | Main pump | 2-24 |
| Group 6 | Travel motor | 2-49 |
| Group 7 | Main control valve | 2-62 |
| Group 8 | Boom and bucket cylinder | 2-70 |

SECTION 2 HYDRAULIC SYSTEM

GROUP 1 HYDRAULIC CIRCUIT



8007HT00

- | | | | | | |
|---|--------------------|----|--------------------|----|--------------------------|
| 1 | Main pump | 6 | Solenoid valve | 11 | Quick coupler(Female) |
| 2 | Main control valve | 7 | Oil cooler | 12 | Quick coupler(Male) |
| 3 | Travel motor | 8 | Return filter | 13 | Self level valve(option) |
| 4 | Boom cylinder | 9 | Suction strainer | 14 | Parking cylinder(option) |
| 5 | Bucket cylinder | 10 | Hydraulic oil tank | 15 | Solenoid valve(option) |