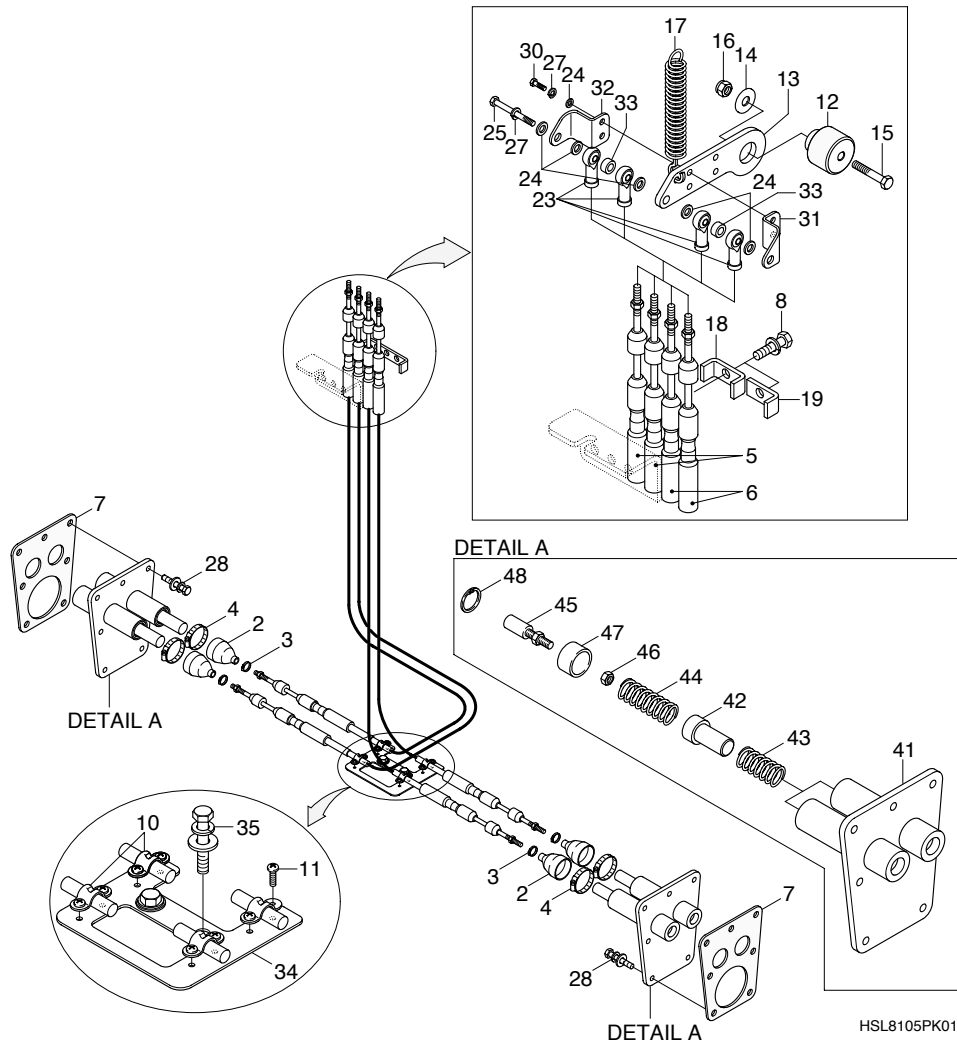


GROUP 3 PARKING BRAKE

The wheel pin locking assembly consists of a control cable which inserts a locking pin into holes in the rear wheel axle, locking the wheels. When the seat bar is raised, the pin is inserted and when it is lowered, the pin is retracted.

1. STRUCTURE



2	Boot	15	Hexagon bolt	32	Bracket
3	Hose clamp	16	Self locking nut	33	Spacer
4	Hose clamp	17	Tension spring	34	Plate
5	Push pull cable(LH)	18	Cable clamp	35	With washer bolt
6	Push pull cable(RH)	19	Cable clamp	41	Housing
7	Gasket	23	Rod end	42	Pin
8	With washer bolt	24	Plain washer	43	Spring
10	Cable clamp	25	Hexagon bolt	44	Spring
11	Round head bolt	27	Spring washer	45	Ball joint
12	Spacer	28	With washer bolt	46	Jam nut
13	Plate	30	Hexagonal bolt	47	Piston
14	Special washer	31	Bracket	48	Retaining ring

2. REMOVAL

- 1) Disconnect the control cables(5,6) from the plate(13).
- 2) Loosen clamps(3,4) securing the boot(2) to the housing(41) and slide the boot(2) back on the control cables(5,6).
- 3) Remove the retaining ring(48) and slide the control cables(5,6), with the piston(47), from the housing(41).
- 4) Remove the locking pin(42) and two springs(43,44) from the housing(41).
Compression spring must be assembled as removed position because the length are different.

3. INSTALL

- 1) Assemble the piston(47) to the control cables(5,6) if parts were removed.
- 2) Insert the compression springs(43,44), locking pin(42) and piston(47)/cables(5,6) into the housing (31). Be sure compression springs(43,44) are the correct size and are positioned properly.
- 3) Install the retaining ring(48) in the housing tube(41).
- 4) Secure the control cables(5,6) to the pump mount plate with the clamps(10). Use loctite #242 on the attaching screws(11).
- 5) Be sure to lock the ball joint(45) in position with the lock nut(46).
- 6) Secure the boot(2) in place over the housing tube(41) with the clamp(4).
- 7) Connect the bolt(25) control cables(5,6) to the plate(13).
- 8) Join both control cables(5,6) with clamps(18,19).