

SECTION 5 CONTROL



Group 1 Hand control ----- 5-1
Group 2 Foot control ----- 5-2
Group 3 Parking brake ----- 5-3
Group 4 Attachment holder ----- 5-4

SECTION 5 CONTROL

GROUP 1 HAND CONTROL

1. ADJUSTMENT OF NEUTRAL

- 1) Stop the loader on a level surface and push throttle lever to low.
- 2) Raise the canopy to service position.
Refer to operator's manual at page 4-14.

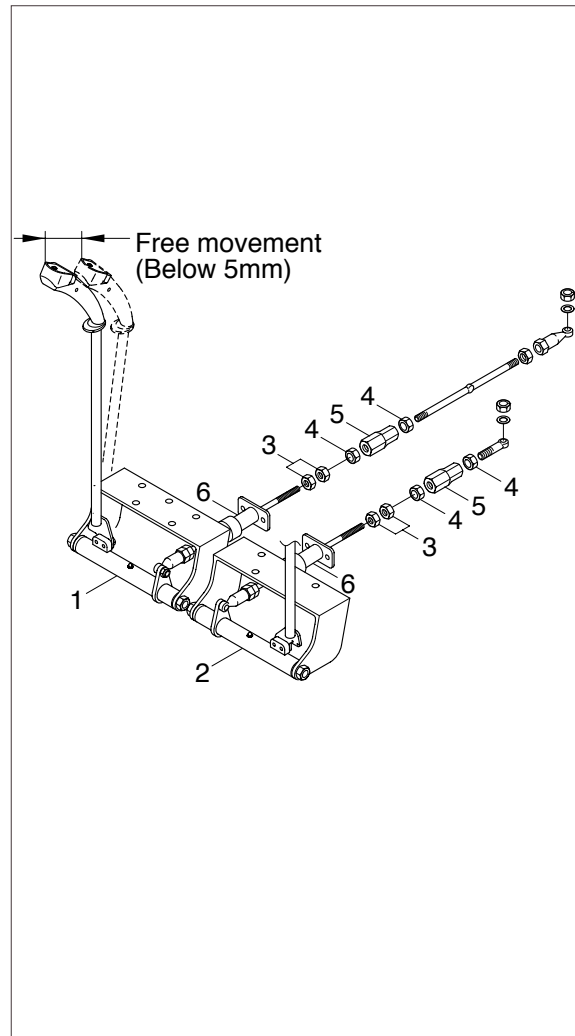
3) Loosen lock nuts(4) to allow adjust nut(5) to move.

4) Adjust neutral position by turn adjust nut(5) slowly to left and right.

Neutral position means the state in which the equipment should not move and generate noise to minimum without moving reduction gear and hand lever.

▲ To prevent unexpected movement of the loader, keep parking position of seat bar.

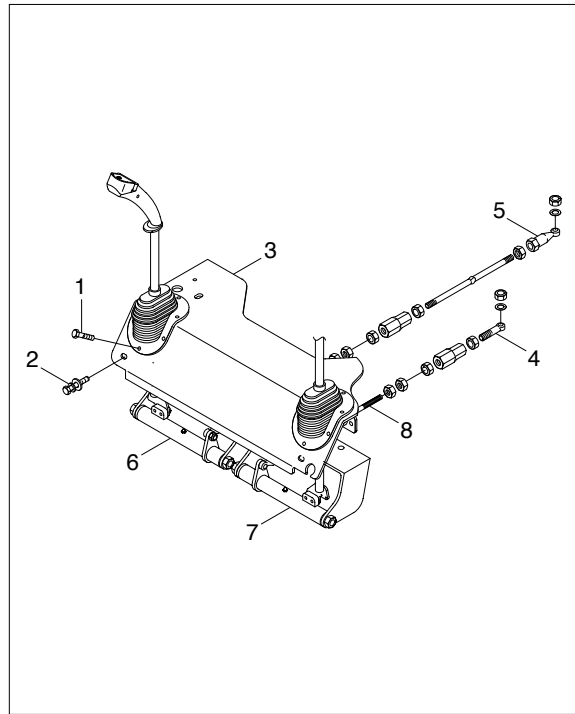
- 5) Tighten lock nut(4) after apply loctite.
- 6) If free movement of hand lever end is over then 5mm, adjust spring bolt assy(6) according to following procedure.
 - (1) Loosen lock nut(3).
 - (2) Adjust free movement adjust nut(5) within 5mm and tighten lock nut(3) after apply loctite.



2. REMOVAL

Be sure engine turn off and boom and bucket lowered on ground before removal and installation work of hand control device.

- 1) Lower boom and bucket on ground and block the loader securely with four wheels clear of the ground.
- 2) Raise operators cab to service position. Refer to operator's manual at page 4-14.
- 3) Remove bolts(1) secure to rubber boots.
- 4) Loosen front cover bolts(2) and remove front cover(3).
- 5) Remove the rod end(4,5) from the pump.
- 6) Remove hand control lever assembly(6,7).
- 7) Remove spring bolt(8).



3. INSTALL

Carry out installation in the reverse order to removal.

- 1) Install spring bolt(8).
Adjust internal free movement of spring bolt with 0.5mm.
- 2) Install hand control lever assembly(6,7).
Adjust lever inclined 6 degree forward (100mm) by turn rod end(10) to left and right.
- 3) Secure rod end on the control pump.
- 4) Adjust spring bolt(8) and rod end(4,5) to keep neutral position(About 90 degree) of the pump control lever(9).
- 5) Install front cover.
- 6) Secure rubber boots.
- 7) Adjust neutral position by procedure described on chapter 1. Adjustment of neutral.

